

Population Census Mesh Data in and around Hamamatsu City as the Ground Truth

Kazutaka IWASAKI

Faculty of Information, Shizuoka University

3-5-1, Johoku, Hamamatsu-shi, 432-8011, Japan

E-mail: iwasaki@ia.inf.shizuoka.ac.jp

The purpose of this report is to introduce the Population Census Mesh Data in and around Hamamatsu City and to discuss the effectiveness of the Mesh Data as the ground truth. The Population Census is being held by the Management and Coordinate Agency of Japan in each 5 years. And the the Population Census Mesh Data began to be arranged in 1965. These mesh data in and around Hamamatsu City have been arranged since 1970's Population Census. The author shows these mesh data and compares them with the Landsat TM imaginary.

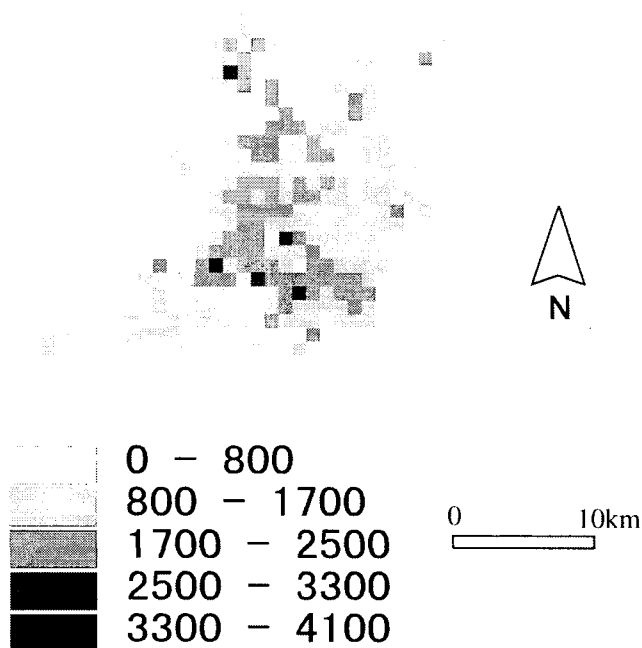


Fig.1 Distribution of Population (Oct. 1, 1995) in DID of Hamamatsu shown as 500m X 500m mesh map.