

Three New Species of Tetractinomorpha (Choristida,  
Hadromerida and Axinellida) from Jeju Island in Korea

Boon Jo Rho and Chung Ja Sim

(Department of Biology, College of Liberal  
Arts and Sciences, Ewha Womans University)

韓國 濟州島産 四放海綿類의 三新種에 關하여

盧 粉 祚·沈 貞 子

(梨花女子大學校 文理大學 生物學科)

(Received May 16, 1979)

摘 要

저자들이 1969年 2月과 12月, 1971年 2月, 1976年 2月 그리고 1978年 11  
월에 濟州島의 西歸浦에서 採集한 海綿類를 同定한 結果 3新種 즉 코리스티  
다해면 目, 조디아해면 科에 *Erylus koreanus*, 경해면 目, 테티아해면 科  
에 *Tethya koreana*, 그리고 축해면 目, 털해면 科에 *Raspailia koreana*로  
命名하고 이들을 記載報告한다. 完模式標本은 梨大 自然史博物館에, 副模式  
標本은 梨大 生物學科에 보관하고 있다.

As the previous paper (Kim, *et al*, 1968; Rho, *et al*, 1969, Rho & Sim, 1972a; 1972b; 1976) this study also deals with the Korean marine sponge fauna in Korea.

The following accounts of the species are based upon the materials collected from Jeju Island during the period from 1969 to 1978.

The authors are indebted to Dr. Klaus Rützler at the Department of Invertebrate Zoology, National Museum of Natural History, Smithsonian Institution, U.S.A. and Dr. Gustavo Pulitzer-Finali at the Instituto di Zoologia, Università di Genova, Italy, for their valuable suggestions during the present work.

Order Choristida Sollas, 1880      코리스티다해면 목  
Family Geodiidae Gray, 1867      조디아해면 과

1. *Erylus koreanus* sp. nov. 꼭지해면  
(pl. 1, Figs. 1-5)

#### Occurrence

One specimen, Seogwipo, Feb. 7, 1971, B.J. Rho, 60 m.

#### Holotype

Natural History Museum of Ewha Womans University, Por. 1.

#### Description

The specimen has many lobes, often tip of them has single osculum.

Dimension: 10 cm wide, 7 cm high.

Colour: Pale yellow in alcohol.

Texture: Stony.

Surface: Smooth, oscula, 2-3 mm in diameter.

Skeleton: Cortical region with aspidasters, euasters and microrhabds is 1 mm thick. Endosome has styles, strongyles, oxeas and rare orthotriaenes.

#### Spicules ( $\mu$ ):

- Megascleres: Orthotriaenes, 450-600 $\times$ 45  
Strongyles, 1000 $\times$ 30, 1300 $\times$ 30  
Oxeas and Styles, 700 $\times$ 15

- Microscleres: Sterrasters, 120-180  
Oxyasters (4 ray), 45-60  
Microstrongyles (Centrotylotes), 30-45 $\times$ 7-9

#### Remarks

This new species is related to *Erylus nigra* Bergquist, 1968, but is distinguished from the latter not only by the external feature but also by the following differences in spiculations.

1. In megascleres, the new species has oxeas and styles which lacks in Bergquist's species.
2. In microscleres, *Erylus nigra* has oxyspherasters which lacks in this new species.

On the other hand, *Erylus mamillaris* (Schmidt) is very much like *Erylus koreanus* in the external feature (Lendenfeld, 1903; Pulitzer-Finali, 1972).

Order Hadromerida Topsent    경해면 목  
Family Tethyidae Gray        데티아해면 과

2. *Tethya koreana* sp. nov. 자루팔기해면  
(Pl. 2, Figs. 1-4)

#### Occurrence

Three specimens, Seogwipo Dec. 15, 1969, B.J. Rho, two specimens, Seogwipo, Feb. 17, 1976, B.J. Rho, nine specimens, Nov. 30, 1978, C.J. Sim, 60-80 m.

- Tanita, S., 1965. Two sponges from the Southwestern Region of the Japan Sea. *Bull. Jap. Sea. Reg. Fish. Res. Lab.*, (14) : 67—70.
- \_\_\_\_\_, 1969. Further Studies on the Sponges obtained from the Sato Island and its Adjacent Waters. *ibid.*, 21 : 67—88.
- Thiele, J., 1898. Studien über pazifische spongien 1. *Zool.*, 24 : 1—72.

### EXPLANATION OF PLATES 1-3

#### Plate 1

- Fig. 1.** *Erylus koreanus* sp. nov., (One scale measures 1 cm)
- Fig. 2.** A. Style, B. Sterrasters,  $\times 100$
- Fig. 3.** A. Microstrongyle, B. Oxyasters,  $\times 450$
- Fig. 4.** A. Oxea, B. Strongyle,  $\times 100$
- Fig. 5.** A. Orthotriaene, B. Oxyasters,  $\times 100$

#### Plate 2

- Fig. 1.** *Tethya koreana* sp. nov., (One scale measures 1 cm)
- Fig. 2.** Spherasters,  $\times 100$
- Fig. 3.** Strongyloxea,  $\times 40$
- Fig. 4.** Tylasters,  $\times 450$

#### Plate 3

- Fig. 1.** *Raspailia koreana* sp. nov., (One scale measures 1 cm)
- Fig. 2.** A. Styles, B. Slender styles,  $\times 40$
- Fig. 3.** A. Strongyle, B. Slender style,  $\times 100$
- Fig. 4.** A. B. Slender styles,  $\times 100$
- Fig. 5.** A. Acanthostyle,  $\times 450$



Plate 1

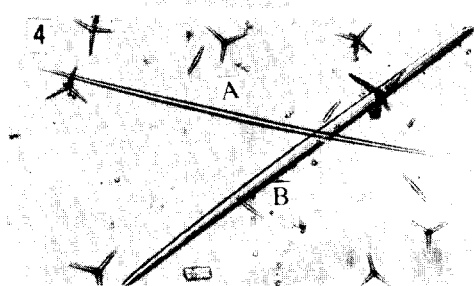
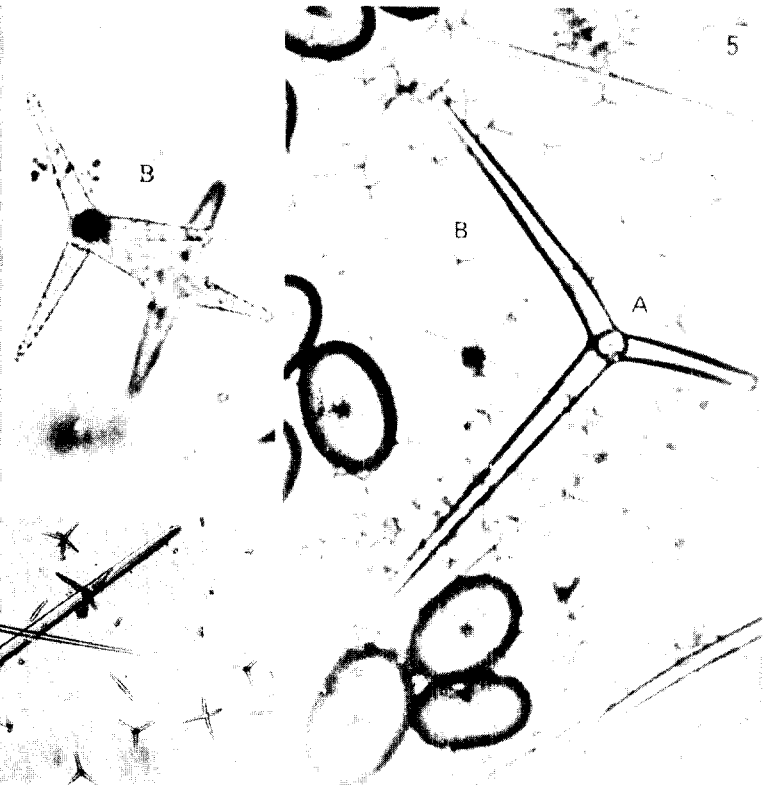
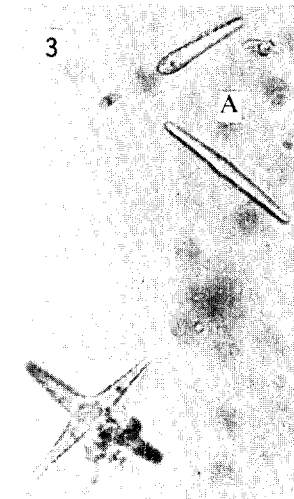
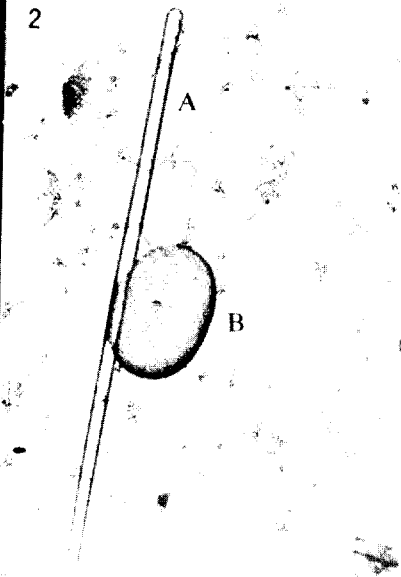
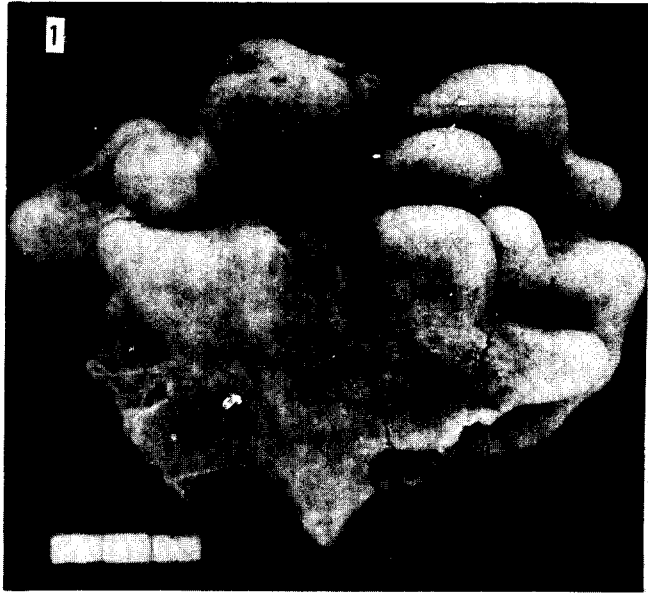


Plate 2

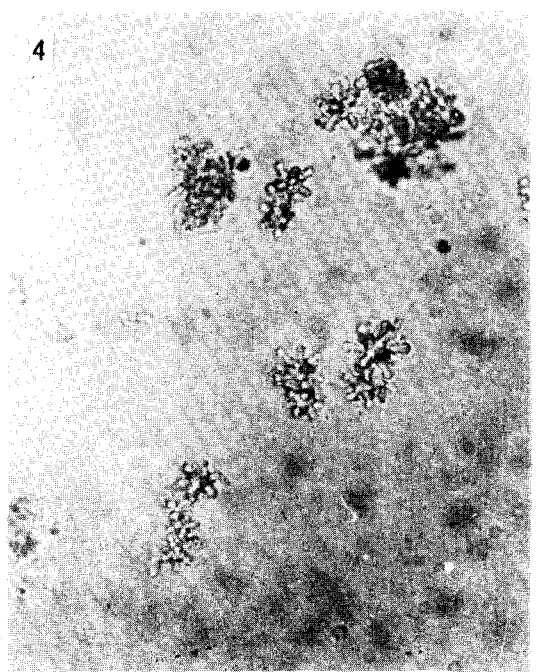
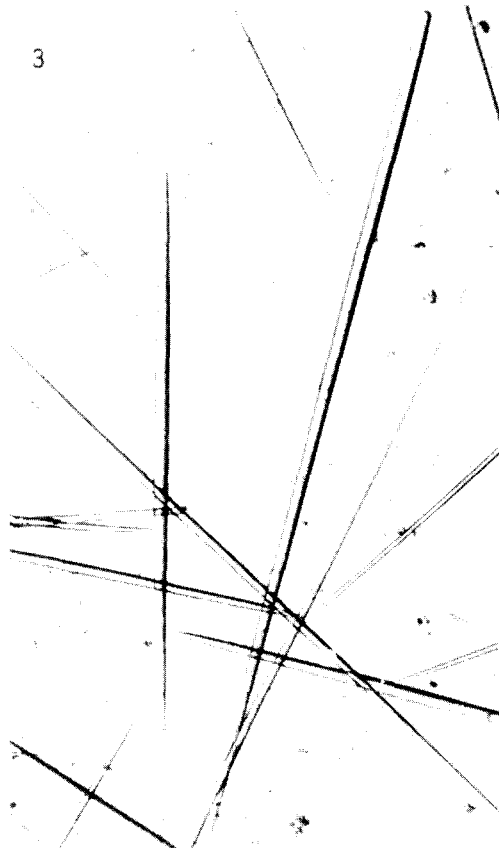
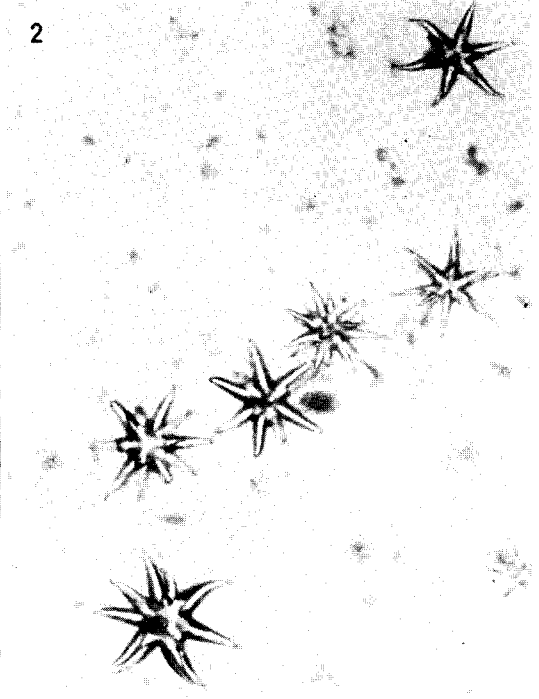
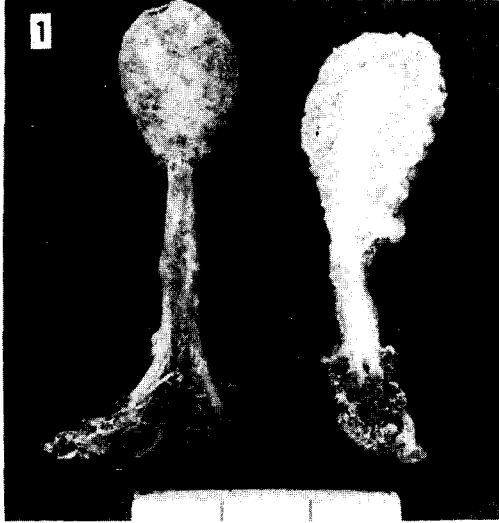


Plate 3

