

C) Interocclusal registration

a) 診斷目的 : Dawson에 의해 記述된 "bimanual manipulation"에 의해 retruded contact position 을 얻고, occlusal programmer나 jig를 使用해서 rear-most, uppermost, midmost position을 얻는다. (Fig. 4, Fig. 5)

6) 治療目的 : intercuspal position을 印記할 때

는 形成된 支台齒의 近遠心面과 같은 크기로 2~3 장의 wax로서 interocclusal record를 採得한다. (Fig. 6)

D) 下顎模型의 mounting

咬合器에 附着된 上顎模型에 採得된 中心位記錄으로 下顎模型을 mounting한다. (Fig. 7)



Fig. 4 With the thumbs in position, the mandible is manipulated into a retruded position.

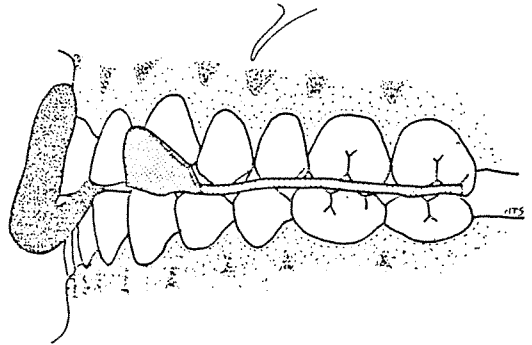


Fig. 5 The assembled programmer and base plate wax arch form.

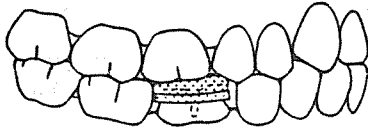


Fig. 6 The treatment registration covers only the prepared tooth(or teeth).

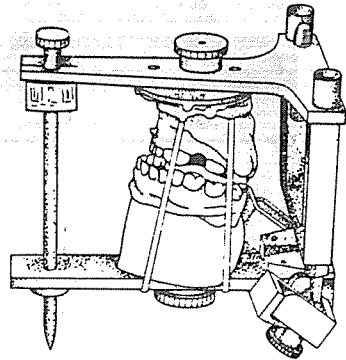
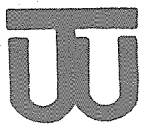


Fig. 7 Mounting the mandibular cast.



정우치과기공소
Jung Woo Dental Lab.

서울특별시 중구 남대문로 5가 17-3 남선빌딩 502호

전화 : 23-5224 · 3413

代表 崔 海 明