

Discovery of *Coleophora obducta* Meyrick (Lepidoptera: Coleophoridae) from Korea

韓國産 잎갈나무통나방, *Coleophora obducta* Meyrick (나비목, 통나방科)의 발견

Bong-Kyu Byun, Kyu-Tek Park¹ and Chul-Ha Park²

변봉규 · 박규택¹ · 박철하²

Abstract - *Coleophora obducta* Meyrick, which has been excluded in the list of Korean Coleophoridae is discovered for the first time from Korea based on the specimens preserved in the Center for Insect Systematics and Forestry Research Institute. The external and genital characteristics of the species is briefly redescribed with available informations.

Key Words - Systematics, Lepidoptera, Coleophoridae, Korea

초 록 - 곤충계통분류연구센터에 소장되어 있는 표본과 임업연구원에서 최근 채집한 통나방科 표본을 중심으로 검경한 결과 과거의 기록에는 있었으나 그 표본이 확인되지 않아 한국곤충명집의 통나방科 목록에서 제외되어 왔던 통나방科의 1種 *Coleophora obducta* Meyrick <잎갈나무통나방>이 우리나라에서는 처음으로 발견되어 간략한 재기재와 함께 報告된다.

검색어 - 분류, 나비목, 통나방科, 한국

Recently sixteen Korean species of the family Coleophoridae (superfamily Gelechoidea) was reported by Park and Baldizzone (1992).

C. obducta is a small moth which has been often erroneously identified as *C. laricella* H. (Issiki, 1957; Ko, 1969). Therefore *C. obducta* M. in Korea has been listed as *C. laricella*. However, we were not able to find any voucher specimen of the previous literature (Ko, 1969) to date. Later *Coleophora obducta* M. was excluded from the Korean list for this reason (Park and Baldizzone, 1992; Entom. Soc. Kor. and Korean Soc. Appl. Entom., 1994).

Recently the first author found numerous specimens of *Coleophora obducta* Meyrick in the Center for Insect

Systematics (CIS), Chuncheon and Forestry Research Institute (FRI), Seoul.

The first author thanks to Mr. K.R. Tuck, the Natural History Museum (NHM), U.K., for providing the genitalic photoes of the type specimens, which was described by Meyrick and preserved in NHM. We also obliged to Dr. Baldizzone for informing us about the Korean specimens he examined.

Description of Species

***Coleophora obducta* Meyrick** 잎갈나무통나방
Coleophora obducta Meyrick, 1931: 161. (Type locality: Japan, Sapporo)

林業研究院 山林生物科 (Forest Biology Division, Forestry Research Institute, Seoul 130-012, Korea, e-mail: bkbyun@chollian.net)

¹ 강원대학교 농업생명과학대학 (College of Life Sciences and Agriculture, Kangwon National University, Chuncheon 200-701, Korea)

² 충청북도산림환경사업소 (Chungcheongbuk-do Forest Experiment Station, Cheongju 360-181, Korea)

Coleophora longisignella Moriuti, 1972: 256.

Coleophora laricella: Ko, 1969: 74 (misidentification).

Wing span, 8.5~12 mm in both sexes. Head, palpi, thorax bronzy-fuscous. Forewing elongate-lanceolate, parallel, apex caudate; rather dark fuscous; cilia gray. Hindwing dark gray; cilia gray.

Male genitalia: Uncus semiovalate, deeply emarginated at top of middle, with folded area. Tegumen somewhat broad. Transtillae slender, weakly connected at middle area. Valva short with a round apex; brachiola short, ovate with numerous short hairs. Sacculus slender, short reached within ventral half of valva. Aedeagus is big, with several short, spinose cornuti.

Female genitalia: Apophysis posteriores 2 times long enough to apophysis anteriores. Ostium bursae subtriangular. Ductus bursae long.

Material examined: [GW] 5♀, Chuncheon, 10. VI. 1989 (K.T. Park); 6♂, 6♀, Chuncheon, 29. V. 1989 (K.T. Park); 2♀, Chuncheon, 6. V. 1990 (K.T. Park); 1♀, Chuncheon, 16. V. 1989 (K.T. Park); 1♀, Chuncheon, 11. VI. 1989 (K.T. Park); 1♀, Chuncheon, 16. V. 1990 (K.T. Park); 1♂, Chuncheon, 19. VI. 1990; 1♀, Chuncheon, 28. V. 1990 (K.T. Park); 1♂, Jeongseon, 30. VII. 1991 (K.T. Park); 1♀, Pyongchang, 31. VII. 1991 (K.T. Park); 1♂, Mt. Seolak, 10. VIII. 1989 (K.T. Park); 1♂, 8♀, Jiam-ri, Chuncheon, 15. VI. 1995 (K.T. Park); 2♂, 11♀, Jiam-ri, 15 km N. Chuncheon, 7. VI. 1997 (Y.M. Park); 2♂, 1♀, Jiam-ri, 15 km N. Chuncheon, 10. VI. 1997 (Y.M. Park); 4♂, 3♀, Seomyon, Yangyang, 4. VI. 1987 (K.T. Park); 3♂, 3♀, Mt. Odae, 26. VI. 1989 (K.T. Park). [GG] 13♀, Mt. Yumyong, 14. VI. 1997 (B.K. Byun & K.S. Oh); 4♂, Mt. Myongji, 23. V. 1991 (B.K. Byun). [JB] 2♂, 1♀, Mt. Daedun, 22-23. V. 1992 (K.T. Park & B.K. Byun). [GN] 1♂, Namhae, 1. VI. 1994 (B.K. Byun). [JJ] 1♀, Seongpanak, 29. IV. 1994 (B.K. Byun &

H.P. Jung); 1♂, Bijarim, 15. VII. 1993 (K.T. Park)-coll. CIS. [CB] 3♂, 1♀, Miwon, Cheongwon, 21. V. 1997 (C.H. Park); 25♀, Miwon, Cheongwon, 21-22. V. 1997 (C.H. Park)-coll. FRI.

Distribution: Korea (Central, South, Chejudo), Japan.

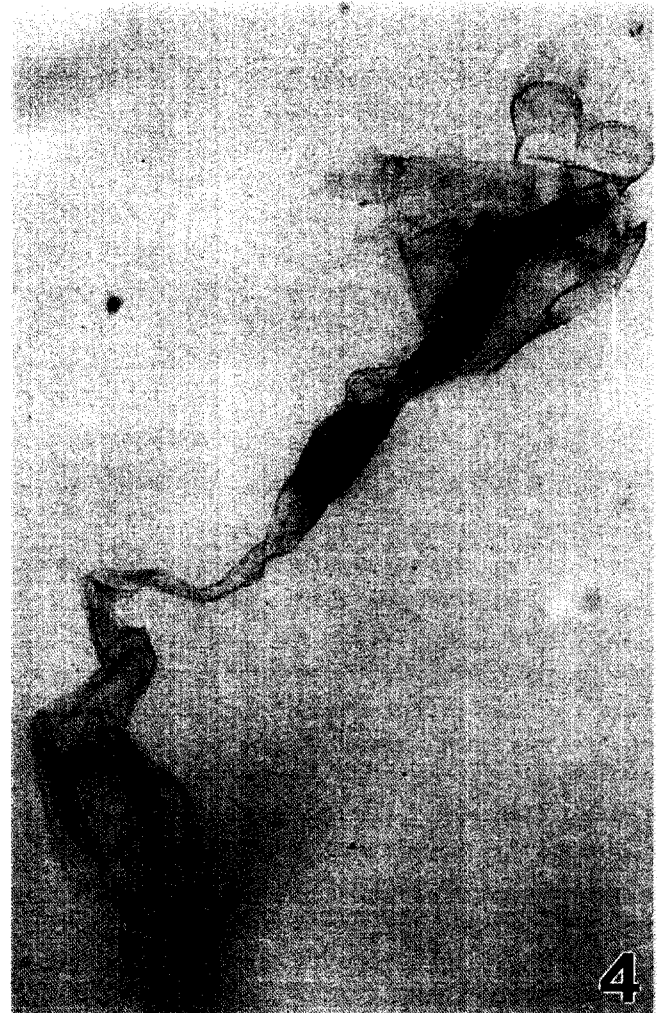
Host: *Larix kaempferi* S. known in Korea.

Remarks: In the recent revision of the family, Park and Baldizzone (1992) mentioned that "Oku (*pers. comm.*) indicated that the Korean species of the present species is closed to *C. sinensis* Yang (1983), even though the Korean material is not available for the time being". Baldizzone (*pers. comm.*) indicates that *Coleophora dahurica* Falkovitsh should be synonymized with the *C. obducta* M.

Literature Cited

- Ko, J.H. 1969. Coleophoridae, *In*. Ko, J.H., A List of Forest Insect Pests in Korea. Forest Research Institute. Seoul. pp. 74-75.
- Park, K.T. and G. Baldizzone. 1992. Systematics of Coleophoridae (Lepidoptera) in Korea, Korean J. Appl. Entomol. 31(4): 516-535.
- Park, K.T. 1983. Microlepidoptera of Korea, Insecta Koreana 3: 92.
- Meyrick, E. 1931. Exotic Microlepidoptera 4: 161.
- Yang, L.M. 1983. A New species of Coleophoridae from China. Scientia Sinicae (Mem. For. Entom.) 1985: 107-108.
- Moriuti, S. 1972. Two new economically important species of Microlepidoptera infesting larch in Japan (Lepidoptera, Coleophoridae and Tortricidae). Kontyu 40: 254-262.
- The Entomological Society of Korea and Korean Society of Applied Entomology, 1994. Check List of Insects from Korea, pp. 744, Seoul.

(Received July 6, 1998; Accepted October 13, 1998)



Figs. 1-4. *Coleophora obducta* Meyrick: 1, adult; 2, cocoon (left) and pupa (right); 3, male genitalia; 4, female genitalia.