

Staphylinidae (Coleoptera) Fauna of Ulleung-do, Korea

Young Bok Cho* and Myoung Hee Kim¹

Natural History Museum, Hannam University, Daejeon City 306-791,

¹*Department of Biology, Chungnam National University, Daejeon City 305-764, Korea*

Abstract - Thirty three species in six subfamilies of Staphylinidae are recognized from Ulleung-do through the survey in 2001. Among them, Thirty one species are newly reported from Ulleung-do. Two species, *Anotylus lewisius* (Sharp) and *Megarthus aino* Cuccodoro, are reported for the first time from Korea.

Key words : Staphylinidae, fauna, new records, Ulleung-do, Korea

INTRODUCTION

The fauna of rove beetles was recorded in Korea about 280 species (Cho and Ahn 2001). Although several surveys for the insect fauna were done in Ulleung-do, Korea, the fauna of rove beetles was known very poorly, only with two species, *Creophilus maxillosus* (Linné) and *Paederus fuscipes* Curtis (Cho 1965; Lee and Kwon 1981; Kwon *et al.* 1996).

Cho, the first author, investigated the rove beetles fauna by using pit-fall trap and sifting methods in Ulleung-do during the periods of July 31~August 3 and October 22~24, 2001. The investigating sites were Tonggumi, Naribunji, valley of Mt. Songgotsan, and Guam areas.

In this paper, 33 species of 6 subfamilies are recognized. Among them, 31 species are newly reported from Ulleung-do. Two species, *Anotylus lewisius* (Sharp) and *Megarthus aino* Cuccodoro, are reported for the first time in Korea. The specimens examined are deposited in the Natural History Museum, Hannam University (HUNHM), Korea.

RESULTS

Subfamily Aleocharinae 바수염반날개아과

Aleochara lata Gravenhorst 바수염반날개

Aleochara lata Gravenhorst, 1802. Coleoptera Microp-
tera Brunsv.: 186.

Material examined. 2 exs.: Naribunji, VIII. 1.-VIII.
2. 2001, Y. B. Cho, *ex.* bait trap.

Distribution. Korea (new record: Ulleung-do), Russia
(Siberia), and Europe.

Aleochara parens Sharp 애홍딱지바수염반날개

Aleochara parens Sharp, 1874. Trans. Ent. Soc. Lon-
don: 6.

Material examined. 13 exs.: Naribunji, VII. 31-VIII.
1. 2001, Y. B. Cho, *ex.* bait trap; 1 *ex.*: Tonggumi, VII. 31
-VIII. 1. 2001, Y. B. Cho, *ex.* sifting.

Distribution. Korea (new record: Ulleung-do) and
Japan.

Aleochara curtula (Goeze) 홍딱지바수염반날개

Staphylinus curtula Goeze, 1777. Aus. Nat. 1: 730.

Aleochara discoidea Sharp, 1874. Trans. Ent. Soc.
Lond.: 7.

* Corresponding author: Young Bok Cho, Tel. 042-629-7699,
Fax. 042-629-8245, E-mail. youngcho@mail.hannam.ac.kr

Aleochara puncticeps Thomson, 1860. Skand. Col. 2. Lund.: 248.

Material examined. 13 exs.: Naribunji, VII. 31-VIII. 1. 2001, Y. B. Cho, ex. bait trap; 2 exs.: Tonggumi, VII. 31-VIII. 1. 2001, Y. B. Cho, ex. bait trap.

Distribution. Korea (new record: Ulleung-do), Japan, East Russia, Europe, and North America.

***Atheta sordida* Marsham** 금딱지바수염반날개

Atheta sordida Marsham, 1802, Col. britt.: 514.

Material examined. 20 exs.: Tonggumi, VII. 31-VIII. 1. 2001, Y. B. Cho, ex. sifting.

Distribution. Korea (new record: Ulleung-do) and Japan.

***Falagria sulcata* (Paykull)** 도랑반날개

Staphylinus sulcatus Paykull, 1789. Johann. Edmon.: 32.

Material examined. 7 exs.: Tonggumi, VII. 31-VIII. 1. 2001, Y. B. Cho, ex. sifting.

Distribution. Korea (new record: Ulleung-do), Japan, China, East Russia, Europe, North Africa, and North America.

***Myrmecocephalus sapida* (Sharp)** 긴다리도랑반날개

Falagria sapida Sharp, 1874. Trans. Ent. Soc. Lond.: 2.

Material examined. 5 exs.: Tonggumi, VII. 31-VIII. 1. 2001, Y. B. Cho, ex. sifting.

Distribution. Korea (new record: Ulleung-do) and Japan.

Subfamily Osoriinae 투구반날개아과

***Osorius taurus* Sharp** 투구반날개

Osorius taurus Sharp, 1889. Ann. Mag. Nat. His. 6(3): 411.

Material examined. 1 ex.: Mt. Songgotsan valley, VIII. 1. 2001, Y. B. Cho, ex. sifting.

Distribution. Korea (new record: Ulleung-do), Japan, and China.

Subfamily Oxytelinae 줄반날개아과

***Anotylus lewisius* (Sharp)** 좁쌀줄반날개 (신칭) (Fig. 1)

Oxytelus lewisius Sharp 1874. Trans. Ent. Soc. Lond.:

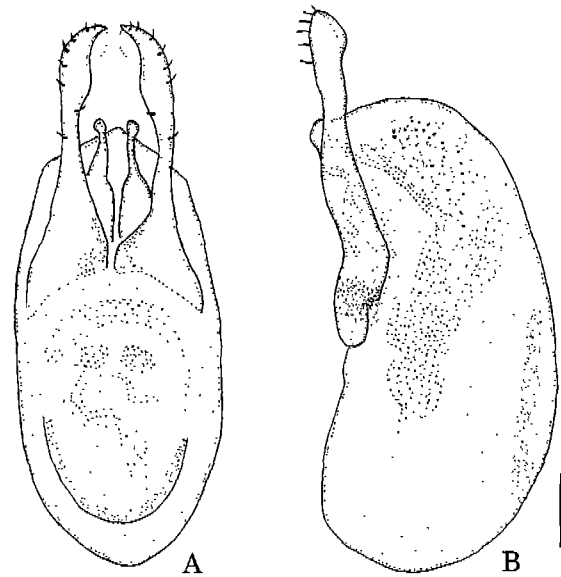


Fig. 1. Male genitalia of *Anotylus lewisius* (Sharp): A, ventral view; B, lateral view. scale = 0.1 mm.

95.

Oxytelus similis Cameron 1930. Ent. Mon. Mag. 66: 184.

Material examined. 14 exs.: Naribunji, VII. 31-VIII. 1. 2001, Y. B. Cho, ex. bait trap; 1 ex.: Tonggumi, VII. 31-VIII. 1. 2001, Y. B. Cho, ex. sifting.

Distribution. Korea, Japan, Taiwan, and China.

Remark. This species is newly reported from Korea.

Subfamily Paederinae 개미반날개아과

***Astenus porosus* (Sharp)** 검은곰보개미반날개

Sunius porosus Sharp, 1889. Ann. Mag. Nat. His. 6(3): 322.

Material examined. 1 ex.: Guam X. 23 2001, Y. B. Cho, ex. sifting.

Distribution. Korea (new record: Ulleung-do) and Japan.

***Astenus suffusus* (Sharp)** 골검은곰보개미반날개

Sunius suffusus Sharp, 1874. Trans. Ent. Soc. Lond.: 73.

Material examined. 1 ex.: Guam X. 23 2001, Y. B. Cho, ex. sifting.

Distribution. Korea (new record: Ulleung-do), Japan, and China.

***Domene curtipennis* Sharp** 검붉은딱지왕개미반날개

Domene curtipennis Sharp, 1889. Ann. Mag. Nat. His. 6(3): 261.

Material examined. 3 exs.: Naribunji, VIII. 1. 2001, Y. B. Cho, *ex. sifting*; 4 exs.: Mt. Songgotsan valley, VIII. 1. 2001, Y. B. Cho, *ex. sifting*; 1 ex. Tonggumi, VII. 31-VIII. 1. 2001, Y. B. Cho, *ex. sifting*.

Distribution. Korea (new record: Ulleung-do), Japan, and China.

***Isochelus staphylinoides* (Kraatz)** 큰개미반날개

Lithocharis staphylinoides Kraatz, 1859. Arch. Nat. 25(1): 134.

Material examined. 7 exs.: Tonggumi, VII. 31- VIII. 1. 2001, Y. B. Cho, *ex. sifting*; 1 ex.: Naribunji, VIII. 1. 2001, Y. B. Cho, *ex. sifting*.

Distribution. Korea (new record: Ulleung-do), Japan, Taiwan, Singapore, and E. Africa.

***Lithocharis nigriceps* Kraatz** 개미반날개붙이

Lithocharis nigriceps Kraatz, 1859. Arch. Nat. 25(1): 139.

Lithocharis parviceps Sharp, 1874. Trans. Ent. Soc. Lond.: 66.

Material examined. 25 exs.: Tonggumi, VII. 31-VIII. 1. 2001, Y. B. Cho, *ex. sifting*.

Distribution. Korea (new record: Ulleung-do), Japan, China, Taiwan, India, Thailand, and Philippines.

***Homeotarsus densipenne* (Sharp)** 긴머리반날개

Cryptobium densipenne Sharp, 1889. Ann. Mag. Nat. His. 6(3): 254.

Material examined. 1 ex.: Mt. Songgotsan valley, VIII. 1. 2001, Y. B. Cho, *ex. sifting*; 1 ex.: Naribunji, VIII. 1. 2001, Y. B. Cho, *ex. sifting*; 1 ex.: Guam, X. 24 2001, Y. B. Cho, *ex. sifting*.

Distribution. Korea (new record: Ulleung-do), Japan, and China.

***Paederus fuscipes* Curtis** 청딱지개미반날개

Paederus fuscipes Curtis, 1826. Brit. Ent. 3: 108.

Paederus idae Sharp, 1874. Trans. Ent. Soc. Lond.: 75.

Paederus fuscipes: Lee and Kwon, 1981: 153; Kwon *et al.*, 1996: 475 (Ulleung-do).

Distribution. Cosmopolitan, including Korea, Japan,

and China, except America.

Remark. This species was reported in Ulleung-do by Lee and Kwon (1981), and Kwon *et al.* (1996).

***Rugilus longicornis* (Sharp)** 홍가슴가는목반날개

Stilicus longipennis Sharp, 1889. Ann. Mag. Nat. His. 6(3): 321.

Material examined. 21 exs.: Tonggumi, VII. 31-VIII. 1. 2001, Y. B. Cho, *ex. sifting*.

Distribution. Korea (new record: Ulleung-do), Japan, and China.

***Scopaeus currax* Sharp** 둥근가슴개미반날개

Scopaeus currax Sharp, 1874. Trans. Ent. Soc. Lond.: 261.

Material examined. 1 ex.: Mt. Songgotsan valley, VIII. 1. 2001, Y. B. Cho, *ex. sifting*.

Distribution. Korea (new record: Ulleung-do), Japan, and China.

Subfamily Proteninae 넓적반날개아과***Megarthrus aino* Cuccodoro** 꼬마큰넓적반날개 (신칭) (Fig. 2)

Megarthrus aino Cuccodoro, 1996. Revue Suisse de Zool. 103(2): 478.

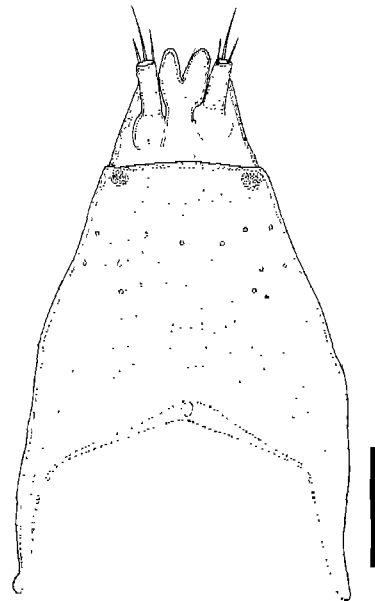


Fig. 2. Female genitalia of *Megarthrus aino* Cuccodoro (ventral view). scale = 0.1 mm.

Material examined. 1 ex.: Guam, X. 23. 2001, Y. B. Cho, *ex. sifting*.

Distribution. Korea and Japan.

Remark. This species is newly reported from Korea.

Subfamily Staphylininae 반날개아과

Bisnius parvus (Sharp) 작은가슴좀반날개

Philonthus parvus Sharp, 1874. Trans. Ent. Soc. Lond.: 40.

Philonthus subaereipennis Bernhauer, 1938. Ent. Nachr. 12(2): 97.

Material examined. 1 ex.: Naribunji, VIII. 1. 2001, Y. B. Cho, *ex. sifting*; 1 ex.: Naribunji, VIII. 1. 2001, Y. B. Cho, *ex. bait trap*.

Distribution. Korea (new record: Ulleung-do), Japan, and China.

Creophilus maxillosus (Linné) 왕반날개

Staphylinus maxillosus Linné, 1758. Systema Naturae Vol. 1: 421.

Creophilus maxillosus: Cho, 1965: 186; Kwon *et al.*, 1996: 475 (Ulleung-do).

Staphylinus maxillosus: Lee and Kwon, 1981: 153 (Ulleung-do).

Material examined. 4 exs.: Naribunji, VII. 31-VIII. 1. 2001, Y. B. Cho, *ex. bait trap*.

Distribution. Korea, Japan, and China.

Remark. This species was reported in Ulleung-do by Cho (1965), Lee and Kwon (1981), and Kwon *et al.* (1996).

Diochus japonicus Cameron 뽕족머리긴반날개

Diochus japonicus Cameron, 1930. Ent. Mon. Mag.: 206.

Material examined. 1ex.: Naribunji, VIII. 1. 2001, Y. B. Cho, *ex. sifting*.

Distribution. Korea (new record: Ulleung-do), Japan, and China.

Gabrius ophion Smetana 검홀쪽좀반날개

Gabrius ophion Smetana, 1984. Pan-pacific Ent. 60 (2): 146.

Gabrius gladipennis Cho and Lee, 1997. Korean Jour. Syst. Zool. 13(4): 275.

Material examined. 9 exs.: Naribunji, VIII. 1. 2001,

Y. B. Cho, *ex. sifting*; 2 exs.: Mt. Songgotsan valley, VIII. 1. 2001, Y. B. Cho, *ex. sifting*.

Distribution. Korea (new record: Ulleung-do) and Japan.

Phacophallus japonicus (Cameron)

띠황색긴반날개 (신칭)

Leptacinus japonicus Cameron, 1933. Ent. Mon. Ent. 69: 169.

Material examined. 12 exs.: Tonggumi, VII. 31-VIII. 1. 2001, Y. B. Cho, *ex. sifting*.

Distribution. Korea (new record: Ulleung-do) and Japan.

Remark. This species is reported herein from Ulleung-do for the first time. The first record of this species in Korean fauna was done by Bordoni (in press)

Philonthus harvelkai Dvořák 길쪽좀반날개

Philonthus havelkai Dvořák, 1958. Mushi 32: 140.

Material examined. 1 ex.: Naribunji, VII. 31-VIII. 1. 2001, Y. B. Cho, *ex. sifting*; 1ex.: Tonggumi, VII. 31-VIII. 1. 2001, Y. B. Cho, *ex. sifting*.

Distribution. Korea (new record: Ulleung-do) and Japan.

Philonthus japonicus Sharp 좀반날개

Philonthus japonicus Sharp, 1874. Trans. Ent. Soc. Lond.: 40.

Philonthus binderi Roubal, 1910. Verh. der Zool.-Botan. Wien 60: 263.

Material examined. 14 exs.: Naribunji, VII. 31-VIII. 1. 2001, Y. B. Cho, *ex. bait trap*.

Distribution. Korea (new record: Ulleung-do), Japan, China, and Russia.

Philonthus longicornis Stephens 수염좀반날개

Philonthus longicornis Stephens, 1832. Mandibulata 5: 237.

Philonthus scybalarius Nordmann, 1837. Acad. Caes. Scient. 4: 94.

Material examined. 2 exs.: Tonggumi, VII. 31-VIII. 1. 2001, Y. B. Cho, *ex. sifting*.

Distribution. Cosmopolitan, including Korea (new record: Ulleung-do), Japan, China, Russia, Europe, and America.

***Philonthus minutus* Boheman** 먼지좀반날개

Philonthus minutus Boheman, 1848. Insecta Caffrariae I: 279.

Philonthus mutans Sharp, 1874. Trans. Ent. Soc. London: 43.

Material examined. 1 ex.: Naribunji, VII. 31-VIII. 1. 2001, Y. B. Cho, *ex.* sifting.

Distribution. Korea (new record: Ulleung-do), Japan, S. Europe, Oriental region, New Guinea, Africa, India, and Sri Lanka.

***Philonthus ohizumi* Dvořák** 소동좀반날개

Philonthus ohizumi Dvořák, 1958. Mushi 32: 136.

Material examined. 1 ex.: Naribunji, VII. 31-VIII. 1. 2001, Y. B. Cho, *ex.* bait trap.

Distribution. Korea (new record: Ulleung-do) and Japan.

***Philonthus rectangulus* Sharp** 모난좀반날개

Philonthus rectangulus Sharp, 1874. Trans. Ent. Soc. Lond.: 42.

Material examined. 7 exs.: Tonggumi, VII. 31-VIII. 1. 2001, Y. B. Cho, *ex.* sifting.

Distribution. Korea (new record: Ulleung-do), Japan, China, Russia, Europe, and N. America.

***Philonthus sericans* Sharp** 비단좀반날개

Philonthus sericans Sharp, 1874. Trans. Ent. Soc. Lond.: 45.

Material examined. 9 exs.: Tonggumi, VII. 31-VIII. 1. 2001, Y. B. Cho, *ex.* sifting.

Distribution. Korea (new record: Ulleung-do), Japan, and China.

***Philonthus spinipes* Sharp** 주홍좀반날개

Philonthus spinipes Sharp, 1874. Trans. Ent. Soc. Lond.: 39.

Material examined. 1 ex.: Tonggumi, VII. 31-VIII. 1. 2001, Y. B. Cho, *ex.* sifting.

Distribution. Korea (new record: Ulleung-do), Japan, China, Russia, and E. Asia.

***Philonthus tardus* Kraatz** 붉은테좀반날개

Philonthus tardus Kraatz, 1859. Archiv Für Naturgeschichte 25: 84.

Philonthus solidus Sharp, 1874. Trans. Ent. Soc. London: 43.

Material examined. 14 exs.: Naribunji, VII. 31-VIII. 1. 2001, Y. B. Cho, *ex.* bait trap; 1 ex.: Tonggumi, VII. 31-VIII. 1. 2001, Y. B. Cho, *ex.* sifting.

Distribution. Korea (new record: Ulleung-do), Japan, China, Taiwan, Sri Lanka, and East India.

***Philonthus wuesthoffi* Bernhauer** 극동좀반날개

Philonthus wuesthoffi Bernhauer, 1938. Ent. Nachr. 12(2): 98.

Philonthus fragelianus Tikhomirova, 1973. Katalogom fauny SSUR: 184.

Philonthus tuberculatus Coiffait, 1974. Nouv. Rev. Ent. Suppl. 4(4): 203.

Material examined. 1 ex.: Naribunji, VII. 31-VIII. 1. 2001, Y. B. Cho, *ex.* bait trap.

Distribution. Korea (new record: Ulleung-do), Japan, China, and Russia.

REFERENCES

- 조복성. 1965. 울릉도의 곤충상. 고려대학교 60주년 기념논문집 (자연과학편):157-205.
- Bernhauer M. 1938. Zur Staphylinidenfauna von China u. Japan. Entomologisches Nachrichtenblatt. 12(2):97-109.
- Bordoni A. Appunti su alcuni Xantholinini della Corea (Coleoptera, Staphylinidae). 127th contributo alla conoscenza degli Staphylinidae. in press.
- Boheman CH. 1848. Insecta Caffrariae, annis 1838-1845 a JA Wahlberg collecta. Coleoptera (Carabici, Hydrocanthari, Gyrinii et Staphylinii). 1(1):viii+297. Holmiae: Norstedtiana.
- Cameron M. 1930. New species of Staphylinidae from Japan. Ent. Mon. Mag. 66:205-208.
- Cameron M. 1933. Staphylinidae of Japan. Ent. Month. Mag. 69:208-219.
- Cuccodoro G. 1996. Revision of the Japanese rove-beetles of the genus *Megarthus* (Coleoptera, Staphylinidae, Proteininae). Revue Suisse de Zool. 103(2):475-524.
- Cho YB and CE Lee. 1997. Taxonomic study on the genus *Gabrius* (Coleoptera: Staphylinidae) with two new species from Korea. Korean J. Syst. Zool. 13(4):271-278.
- Cho YB and KJ Ahn. 2001. Coleoptera (Silphidae, Staphylinidae). Insect Koreana suppl. 18:167.
- Coiffait H. 1974. Coléoptères Staphylinidae de la région

- paléartique occidentale II. Sous famille Staphylinidae, Tribus Philontini et Staphylinini. Nouvelle Revue d'Entomologie. Supplément. 4(4):1-593.
- Dvořák, R. 1958. Seven new species of *Philonthus* from Japan (IV. Contribution to the knowledge of Japanese Staphylinidae). Mushi. 32:135-141.
- Goeze JAE. 1777. Entomologische Beiträge zu des Ritter Linnè 12. Ausgabe des Natursystems, Vol. 1. Leipzig. 736 pp.
- Kraatz G. 1859. Staphylinen-Fauna von Ostindien, insbesondere der Insel Ceylan. Archiv Für Naturgeschichte 25, 196 pp.
- Kwon YJ, SJ Suh, SL An, and EY Huh. 1996. Insect diversity of Ullungdo and Tokto Islands in Korea. Rep. Sur. Nat. Environ. Korea. 10:439-532.
- Lee, CE and YJ Kwon. 1981. On the insect fauna of Ulreung Is. and Dogdo Is. in Korea. KACN. 19:139-178.
- Linné, C. 1758. Systema naturae, per regina tria naturae, secundum Classes, Ordines, Genera. Species, cum characteribus, differentis, synonymis, locis. Vol. 1. ed 10, 824pp. Holmiae: Laurentii Salvii.
- Nordmann A. 1837. Symbolae et monographiam staphylinorum. Ex Academiae Caesareae Scientiarum 4:1-167. Petropoli: Academiae Caesareae Scientiarum.
- Paykull G. 1789. Monographia Staphylinorum Sveciae Upsaliae, Johann. Edmon. 81pp.
- Roubal, J. 1910. *Philonthus binderi* spec. nov. Verhandlungen der Zoologisch-Botanischen Gesellschaft in Wien. 60:263-264.
- Sharp D 1874. Staphylinidae of Japan. Trans. Ent. Soc. London:1-103.
- Sharp D. 1889. The Staphylinidae of Japan III. Ann. Mag. nat. Hist. (6)III:28-44, 108-121, 249-267, 319-334, 406-419, 463-476.
- Smetana, A. 1984. Review of the Japanese species of the genus *Gabrius* Stephens (Coleoptera, Staphylinidae), (121st contribution to the knowledge of Staphylinidae). Pan-Pacific Ent. 60(2):122-150.
- Stephens, JF. 1832. Illustrations of British Entomology, Mandibulata, Vol. 5, 240 pp. London.
- Thomson, CG. 1860. Skandinaviens Coleoptera, synoptiskt bearbetade 2:1-304. Lund: Berlingska Boktryckeriet.
- Tikhomirova AL. 1973. Morfoekologicheskie osobennosti i filogenez stafilinid (s katalogom fauny SSUR), pp. 5-191. Moskova: Iedatel'stvo Nauka.

Manuscript Received: February 26, 2003

Revision Accepted: April 15, 2003

Responsible Editorial Member: Ui Wook Hwang
(Kyungbuk Univ.)