

수소첨가레시틴을 이용한 액정 젤의 형성과 보습효과

김인영[†] · 이주동 · 유희창 · 조춘구*

엔프라니(주) 피부과학연구소, *송실대학교 환경화학공학과

Formation of Liquid Crystalline with Hydrogenated Lecithin and Its Effectiveness

In-Young Kim[†], Joo-Dong Lee, Hee-Chang Ryoo, and Choon-Koo Zhoh*

Skin Science Institute and R&D Center, Enprani Co., Ltd., 40-2, 3ga, Shinhung-dong, Chung-ku, Inchon 400-103, Korea

*Department of Chemical & Environmental Engineering, Soongsil University

요약: 이 연구는 O/W 에멀전에서 주 성분으로 수소첨가 레시틴(이하 HL)을 사용한 액정젤(이하 LCG)을 형성하는 방법에 대하여 기술하였다. 가장 적절한 LCG의 조성에 대한 안정성 시험과는 다음과 같다. 액정을 형성하기 위하여 사용된 조성은 다음과 같다. 유화제로 4.0 wt%의 HL과 부스터로 4.0 wt%의 세토스테아릴알코올 (CA)를 사용하였다. 액정 젤의 형성에 보습제는 글리세린 2.0 wt%, 1,3-부틸렌글리콜(1,3-BG) 3.0 wt%, 에몰리엔트는 사이클로메치콘 4.0 wt%, 이소노닐이소노나노에이트(ININ) 3.0 wt%, 카프릭카프릴릭트리글리세라이드(CCTG) 3.0 wt%, 마카데미아넛오일(MNO) 3.0 wt%을 사용하였다. 최적의 LCG의 형성조건은 pH=4.0~11.0 범위에서 잘 형성되었으며, 피부안전성을 고려하여 6.0±1.0 범위로 설정하였다. 가장 안정한 경도는 32 dyne/cm²이었다. LCG의 입자크기는 1~20 μm 범위이었으며, 가장 잘 형성되는 입자 크기는 1~6 μm에서 가장 잘 형성되었다. 편광현미경을 통하여 액정의 형성 및 모양을 관찰하였으며, 액정의 둘레 주위에 다중라멜라 구조가 형성되는 것을 확인하였다. 피검자 20명을 대상으로 하여 피부보습효과를 임상측정한 결과 placebo크림에 비하여 36.6%가 증가하였다. 그 이유는 액정의 주위의 친수그룹이 폴리올들을 많이 흡수하고 있기 때문이라고 예측하였다. 이 LCG형성 이론을 근거로 하여 의학 및 화장품 산업에 크게 응용될 것으로 기대한다.

Abstract: This study described about method that forms liquid crystal gel (LCG) by main ingredient with hydrogenated lecithin (HL) in O/W emulsion system. Result of stability test is as following with most suitable LCG's composition. Composition of LCG is as following, to form liquid crystal, an emulsifier used 4.0 wt% of cetostearyl alcohol (CA) by 4.0 wt% of HL as a booster. Moisturizers contained 2 wt% of glycerin and 3.0 wt% of 1,3-butylene glycol (1,3-BG). Suitable emollients used 3.0 wt% of cyclomethicone, 3.0 wt% of isononyl isononanoate (ININ), 3.0 wt% of cerpic/carprylic triglycerides (CCTG), 3.0 wt% of macademia nut oil (MNO) in liquid crystal gel formation. On optimum conditions of LCG formation, the pHs were formed all well under acidity or alkalinity conditions (pH=4.0~11.0). Considering safety of skin, pH was the most suitable 6.0±1.0 ranges. The stable hardness of LCG formation appeared best in 32 dyne/cm². Particle of LCG is forming size of 1~20 μm range, and confirmed that the most excellent LCG is formed in 1~6 μm range. According to result that observe shape of LCG with optical or polarization microscope, LCG could was formed, and confirmed that is forming multi-layer lamellar type structure around the LCG. Moisturizing effect measured clinical test about 20 volunteers. As a result, moisturizing effect of LCG compares to placebo cream was increased 36.6%. This could predicted that polyol group is appeared the actual state because is adsorbed much to round liquid crystal droplets to multi-lamellar layer's hydrophilic group. It could predicted that polyol group is vast quantity present phase that appear mixed because is adsorbed to round liquid crystal to multi-lamellar layer's hydrophilic group. This LCG formation theory may contribute greatly in cosmetics and pharmacy industry development.

Keywords: liquid crystal, hydrogenated lecithin, moisture, o/w emulsion, multi-layer

[†] 주 저자 (e-mail: kimiy@enprani.com)

1. Introduction

Liquid crystal gel (LCG) tells mixing state of crystallization and liquid. That is, molecular arrangement with crystallization is not regular. Regular state is known as liquid crystal or meso-phase to differ with liquid[1]. By method that improve O/W (oil-in-water) emulsion's stability, already used cetyl alcohol (CA) or stearyl alcohol (SA). 1976, S. Fukushima[2] mixed cetyl/stearyl alcohol (CSA) and secured stability of liquid crystal. So that Japanese T. Suzuki[3] stabilizes O/W emulsion in liquid crystal theory that supply suitable emollients and hydrant in skin to cosmetics applied. To improve emulsification stability, it was known as that cetanol and fatty alcohol of SA etc. concerned in O/W emulsion's formation do action that increased hardness of emulsion system[4-7]. Fatty alcohols are already used much in emulsion system. Such fatty alcohol's action relates with formation of structure of liquid crystal in emulsion. N. Nakanishi[8] compounds composing ingredient of intercellular lipid properly and succeeded though moisturizing effect of skin makes high liquid crystal. Also, the same year, I. Sasaki etc[9]. succeeded to make liposome to use phosphatidyl choline (PC) and the derivatives. This liposome is multi-lamellar type differ with liquid crystal. Recently, Japanese H. Kunieda etc[10]. cleared new liquid crystal structure that cubic phase's micelle forms

in octa-ethylglycol dodecyl ether (C₁₂EO₈)-water-oil, 3 phase systems. Thus, about liquid crystal, a lot of studies are proceeding in various fields.

Purpose of this study wished to makes O/W emulsion, and applies manufacture method and this that make multi-layer's liquid crystal inside this emulsion and makes essence, cream including various unstable active materials to use hydrogenated lecithin (HL). To make optimum LCG to use HL, experimented about condition of pH and particle size of liquid crystal. And about the most superior prescription formation availability of LCG shape and structure through microscope confirmed. Also, reported result that test moisturizing effect of LCG to use moisturizing effect measuring instrument by clinical test.

2. Experimental

2.1. Reagents

All materials used in this study used medicine or cosmetics grade. To do to form LCG structure of O/W emulsion's multi-lamellar type, used an emulsifier used hydrogenated lecithin (HL, Lucas Meyer) that is contained more than PC's content 95.0%. Emollient oil used raw material of capric/caprylic triglycerides (CCTG, Kokyu alcohol, Japan), squalane (Kishimoto, Japan), cyclomethicone (Dow coming, USA), and octyldodecanol (ODC, Cognis, Germany) etc. cosmetics grade.

Table 1. Composition of Lipid-LCG with Hydrogenated Lecithin in Oil-in-Water

Classification	Ingredients	Content (wt%)	Remarks
(A) Water phases	Hydrogenated lecithin (HL)	4.00	
	1,3-butylene glycol (1,3-BG)	3.00	
	Glycerin	2.00	
	EDTA-2Na	0.02	
	Methyl paraben (MP)	0.2	
	Water	Q.S	
(B) Oil phase	Capric/caprylic triglycerides (CCTG)	3.00	
	Isononyl isononanoate (ININ)	2.00	
	Macadamia nut oil (MNO)	3.00	
	Cyclomethicone	3.00	
	Cetostearyl alcohol (CSA)	4.00	
	Propyl paraben (PP)	0.10	
	Tocopheryl acetate (TA)	0.10	
(C) Additives	Sodium-hyaluronate (SH)	0.20	
	Imidazolidinyl urea (IU)	0.20	
Total		100.00	

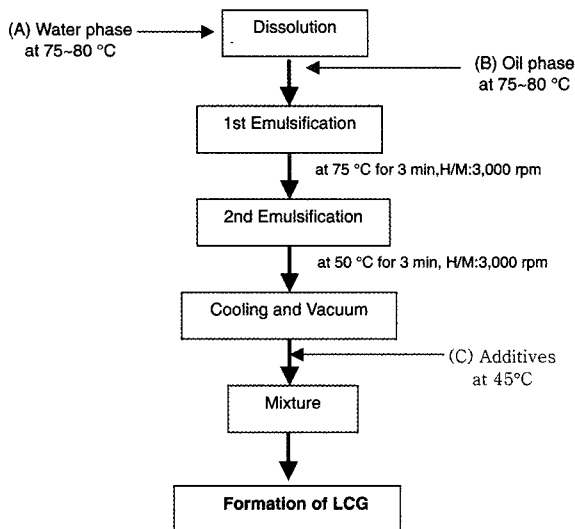


Figure 1. The manufacturing method of the liquid crystal gel with hydrogenated lecithin in O/W emulsion.

Wax concerned in formation of liquid crystal used cetostearyl alcohol (CSA, Cognis, Germany). Moisturizers used glycerin (LG Chemical, Korea) and 1, 3-butylene glycol (1,3-BG, Dow Chem. USA).

2.2. Devices

To make LCG used T. K Robomics (Tokushu Kika Kogyo, Japan). To observe shape of general O/W emulsification particle used optical microscope. Also, observed, and magnifies microscope by 400~1,000 magnifications to examine closely ternary lamellar liquid crystal and observed using polarization microscope to measure change of LCG formation. Also, used Rheometer (Model: CR-150, Suncaps, Japan) to observe stability by passage time about LCG.

2.3. Manufacture Method of LCG

It displayed method that makes LCG to Figure 1. Method that make LCG is as following. After, measure exactly (A) phase (water phase) of Table 1 so that total amount becomes 100 g, 75~80°C heating melt perfectly and keeps separately. Also, (B) Measuring exactly phase (oil phase) 75~80°C after, melt perfectly heating separately keep. Disperse this adequately projecting (B) phase slowly to (A) phase. This time, mix the first for 3 min by 3,000 rpm that is the suitable speed because if make strong or slackens distributed, size of particle is microscopic, or irregularly becomes.

This completed emulsification reaction dispersing the second for 3 min by 3,000 rpm cooling this to 50°C. It made cooling 30°C after made stable LCG through cooling and making a vacuum process and puts (C) phase's admixture in 45°C. This sample was precocious in 25°C for about 72 h when perfect liquid crystal is formed.

2.4. Moisturizing Effect

Device used in skin moisturizing effect measurement about LCG used Corneometer CM-825. Clinical test about skin moisturizing effect experimented according to measuring method that use at cosmetics expert and university hospital dermatology. Clinical test did to woman of 20~40 years old, and tested regardless of skin type. Method of examination chose fixed branch office of both forearms. Moisturizing effect did LCG's cream and general O/W emulsion cream by control and measured by *in-vivo*. Test condition did temperature and humidity within fixed steady temperature and humidity room. Suitable temperature is 25°C, humidity measured under uniformity condition of 60%. Moisturizing effect test for skin measured durability because 30 min test to interval 2 h, 4 h, 6 h after using samples. Effectiveness verification about moisturizing effect of skin verified statistical significant difference to use ANOVA t-test.

3. Results and Discussions

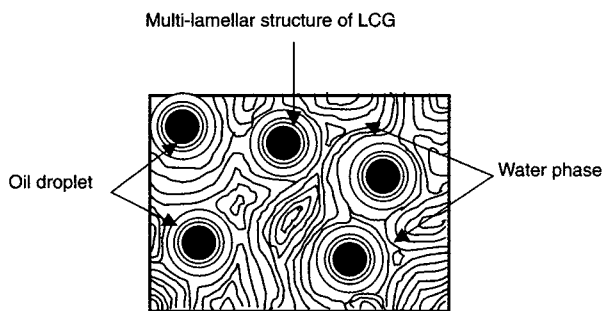
3.1. Structural Characteristic of LCG in O/W Emulsion

Usually, there are various methods that make O/W emulsion in cosmetics industry.

There is seldom much method that form liquid crystal of these[11-15]. Usually, methods that use method and cholesterol, cholesteryl mirystate (CM) or ceramide that use CA, SA, and BA etc. that is fatty alcohol is a technology that have been developed much recently[16-20]. But, these can make LCG but it is hard to make stable LCG. Specially, it is no big advantage in usability and quality side. LCG that is made in this study has other characteristic with general liquid crystal by LCD that use phospholipid. That is, as see in Figure 2, formed small droplet of oil. It was that HL that has amphoteric property's emulsi-

Table 2. Optimizing Condition of LCG with Hydrogenated Lecithin in O/W Emulsion

Phase	Ingredients	Content (wt%)				
		F-1	F-2	F-3	F-4	F-5
(A) Water Phases	Hydrogenated lecithin (HL)	1.00	2.00	3.00	4.00	5.00
	1,3-butylene glycol (1,3-BG)	3.00	3.00	3.00	3.00	3.00
	Glycerin	2.00	2.00	2.00	2.00	2.00
	EDTA-2Na	0.02	0.02	0.02	0.02	0.02
	Methyl paraben (MP)	0.20	0.20	0.20	0.20	0.20
	Water	Q.S	Q.S	Q.S	Q.S	Q.S
(B) Oil Phases	Carpric/carprylic triglycerides (CCTG)	3.00	3.00	3.00	3.00	3.00
	Isononyl isononanoate (ININ)	3.00	3.00	3.00	3.00	3.00
	Macadamia nut oil (MNO)	3.00	3.00	3.00	3.00	3.00
	Cyclomethicone	3.00	3.00	3.00	3.00	3.00
	Cetostearyl alcohol (CSA)	4.00	4.00	4.00	4.00	4.00
	Propyl paraben (PP)	0.10	0.10	0.10	0.10	0.10
	Tocopheryl acetate (TA)	0.10	0.10	0.10	0.10	0.10
(C) Additives	Sodium-hyaluronate (SH)	0.20	0.20	0.20	0.20	0.20
	Imidazolidinyl urea	0.20	0.20	0.20	0.20	0.20
Total		100.0	100.0	100.0	100.0	100.0

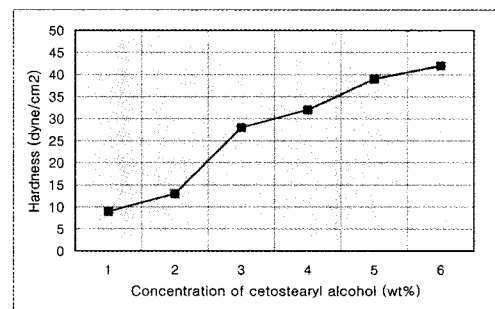
**Figure 2.** Diagram of structure for LCG with hydrogenated lecithin.

fication forms microscopic multi-layer's lamellar liquid crystal structure because is situated on small droplet's outside. This structure had hydrophilic group of continuous phase, and lipid liquid crystal is forming densely by dispersion phase, and can depend on kind of emulsifiers[21].

3.2. Formation Mechanism of LCG

3.2.1. Manufacture of LCG

To make LCG, experimented changing furtherance from Formula 1 (F-1) of Table 2 to Formula 5 (F-5) occasion of F-4 was formed best LCG. F-1~F-5 that make by suitable ingredient and suitable usability and excellent quality in formation of LCG in raw material that use directly in cosmetics industry only by raw

**Figure 3.** Hardness of LCG depending on validation of cetostearyl alcohol.

materials choose. Polyol used to LCG used 3.0 wt% of 1,3-BG and 2.0 wt% of glycerin. Emollient oil used 3.0 wt% of CCTG, 3.0 wt% of ININ, 3.0 wt% of cyclomethicone. Also, to make LCG by an emulsifier 1.0~4.0 wt% of HL were used. Specially, use 4.0 wt% of CA, could do to form stable LCG.

3.2.2. pH Conditions

To make the idealist LCG, observed formation of LCG to use that smelt by citric acid and Na-citrate 10.0 wt% to find appropriate pH extent. Experiments about pH change applied F-4 of Table 2 that list in illustration formula, and pH interval experimented increasing by 1.0 in 5.0~10.0 extent. Because of this condition is fit suitable dimension that can be used to cosmetics. Therefore, formation of LCG by pH change

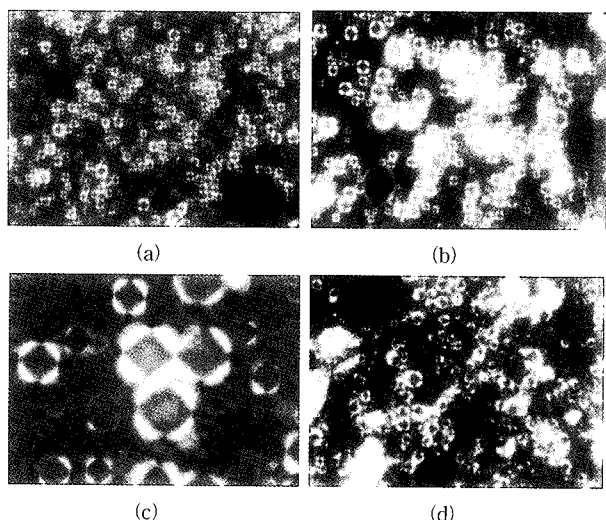


Figure 4. Photograph of the polarized light for forming liquid crystal gel (a); 200 max, (b); 200 max, (c); 1,000 max with 4% of hydrogenated lecithin, (d); 4% of hydrogenated lecithin with 1% of cholesterol.

could know through polarization microscope that LCG is formed well in acidity, neutrality and alkalinity. In case of make liquid crystal to use HL confirmed that hardly receive effect of pH.

3.2.3. Hardness effect of LCG

To make LCG, according to hardness effect confirmed stability of LCG. Effect of hardness applied F-4 of Table 2. Formation of LCG observed hardness change increasing CA from 1.0 wt% to 6.0 wt%. This result displayed to Figure 3. As see in Figure 3, according as CA increases, hardness increased, and hardness of cream that have suitable structure of liquid crystals were the most suitable hardness 32 dyne/cm² in 4.0 wt% of CA. LCG of in case of hardness is high was formed as is stable. But, quality drops in usability, and liquid crystalline shape is formed unstable in case is so low, stability of system was bad.

3.3. Shape Observation of LCG

LCG displayed the formed picture to Figure 4 using HL of 4.0 wt%. When observed magnifying LCG by 200 magnifications through polarization microscope, if see LCG appearing to Figure 4(a), great many LCGs were formed very small clear. Figure 4(b) is the picture that observe LCG by 400 magnifications, confirmed that great many LCG droplet was created. The

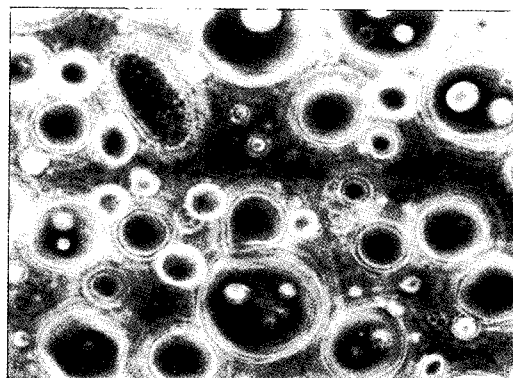


Figure 5. The photograph of microscope of 1,000 magnifications for the formation of liquid crystal gel using 4.0 wt% of hydrogenated lecithin.

very particular multi-lamellar layer was formed observing result expanding by again 1,000 magnifications around of liquid crystal, could know that very pellucid LCG is protecting around them (Figure 4(c)). Picture of Figure 4(d) is prescription that use cholesterol by same content instead of phospholipid, and could know being oily and because was not mixed, that LCG was not formed perfectly. Figure 5 is the picture that observe magnifying optical microscope by 1,000 magnifications and expands outside floor of LCG to confirm whether multi-lamellar layer was formed by some structure. As see in Figure 5, protect surroundings of small droplet of oil and could confirm that lamellar layers of several fold are formed.

3.4. Particle Measurement of LCG

Figure 6 is size and distribution graph of particle of LCG (Table 2, F-4). Measurement of particle fills water to become 100 mL because measures exactly sample 1g and mixed by 200 rpm for 10 min. Using particle measuring instrument and measured particle size in 0.04~500 μ m extent. As see in Figure 6, particle distribution formed in 8.6 μ m extent greatly from 0.04 μ m as is small. Average particle's size could know that is 1.80 μ m in grading 50% extent. Size of particle that liquid crystal appears best could appeared best, and know that the best stable LCG is formed in 1~6 μ m range by in detail in about 1~8 μ m extent.

3.5. Moisturizing Effect

Measurement of moisturizing effect displayed result that measure using Corneometer CM-825 that is mois-

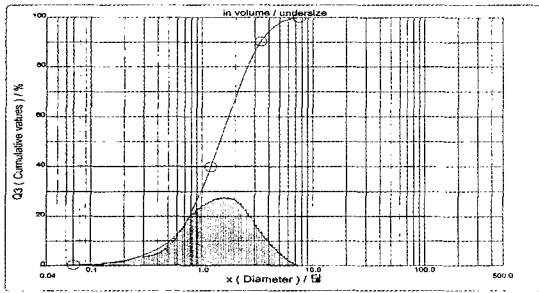


Figure 6. Distribution of particle size for Lipid-LCG; particle size ranges: 0.1~8.0 μm (mean size :1.80 μm).

turizing effect measurement equipment to Figure 7 Skin moisture activity was 62.6 before treated sample. After treated sample, by moisturizing effect of 1 h and after, general O/W emulsion cream's moisture power by 132.7, 52.8% increased. Because LCG was increased 54.2% by 136.8, it was equal level by level similar to comparison sample. Also, because become low according as time passes, after passed 6 h moisturizing effect by in case of 70.2 in O/W emulsion cream about 10.8% was low. LCG sample was shown moisturizing effect of 36.6% by 98.7. O/W emulsion cream could see phenomenon that drop rapidly from 1 h after treated sample. For the reason is expected in phenomenon that general O/W emulsion cream is dehydrated fast, and stays in the case of LCG and to stratum corneum slowly moisture action because moisture is kept long hours. This result verified statistics significant difference using ANOVA t-test, moisturizing effect confirmed that significant difference is because p-value is small more than 0.05. By method to raise moisturizing effect, LCG expects that application is possible in various formulation developments.

4. Conclusions

This study found optimum to make O/W emulsion's LCG to use hydrogenated lecithin. Also, to make LCG, this study uses a various technology and testified. Stability test result is as following with most suitable composition of LCG. As composition to do to form optimum LCG, did to form LCG to use 4.0 wt% of HL, 4.0 wt% of CA. Moisturizers contained, 2.0 wt% of glycerin and 3.0 wt% of 3-BG. Suitable emollients used 3.0 wt% of cyclomethicone, 3.0 wt% of ININ, 3.0 wt% of CCTG, 3.0 wt% of MNO in LCG formation. On

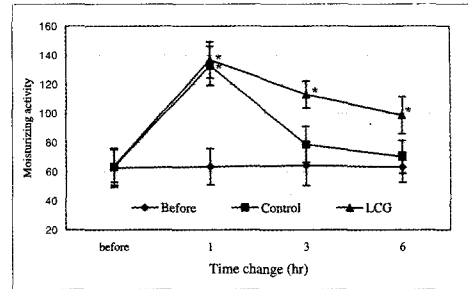


Figure 7. Moisturizing activity of the on LCG compared with O/W emulsion cream by Corneometer CM-825 (n=20, *p<0.05).

optimum of LCG formation, the pHs were formed all well under acidity or alkalinity conditions. The optimum range of pH was 6.0 ± 1.0 ranges considering pH of skin. The best stable hardness range of formation of LCG appeared best in 32 dyne/cm^2 . The particle size of LCG is forming size of 1~20 μm range, and confirmed that the most excellent LCG is formed in 1~6 μm extent. According to result that observe shape of LCG with optical or polarization microscope, LCG could was formed, and confirmed that is forming multi-layer lamellar type structure around the LCG. Measuring result, moisturizing effect of LCG, compare to placebo cream and increased 36.6%. The reason could forecast that polyol group is present phases that appear because is adsorbed much around LCG to multi-lamellar layer's hydrophilic group. This LCG formation theory may contribute greatly in cosmetics industry development.

References

1. 권경옥, 권영두, 김상진, 김주덕, 박성순, 이화순, *新化粧品學*, 229, 도서출판 동화기술, 서울 (1993).
2. S. Fukushima, M. Yamaguchi, and F. Harusawa, Effect of cetostearyl alcohol on stabilization of oil-in-water emulsion, *J. Colloid and Interface Science*, **59**, 159 (1997).
3. T. Suzuki, M. Nakamura, H. Sumida, and A. Shigetani, Secondary droplet emulsion-contribution of liquid crystal formation to physicochemical properties and skin moisturizing effect of cosmetic emulsion, *JSCC*, **43**, 21 (1992).
4. 横田 尚, JP 特開平5-39483 (1993).
5. 横田 尚, 渡邊正, JP 特開平5-39484 (1993).
6. 横田 尚, 渡邊正, JP 特開平5-39485 (1993).

7. P. Chanso, K. Jinuku, C. Jihon, and P. Sunu, JP 2001-048721 (2001).
8. N. Nakanishi, Y. Matsuzawa, and N. Mikami, Moisturizing effect of amino acids and their derivatives, *Frangrance J.*, **23**, 71 (1995).
9. I. Sasaki, K. Arahane, and T. Suzuki, Application of phospholipids as recent humectant formulations, *Frangrance J.*, **23**, 56 (1995).
10. H. Kunieda, M. Tanimoto, K. Shigeta, and C. Rodriguez, Formation of liquid crystalline, *J. Oleo Sci.*, **50**, 633 (2001).
11. D. Imbert and R. Randall, Topical delivery with liposomes, *Cosmetics and Toiletries*, **110**, 32 (1995).
12. I. G. Lyle, U.S Patent, 5,814,323 (1998).
13. Y. Mitsuno, K. Nomaguchi, and T. Suzuki, U.S Patent, 4,767,625 (1998).
14. W. Schuberth and J. F. Hanny, U.S Patent, 4,301,023 (1981).
15. M. Yamashita and K. Kameyama, Scanning electron microscopic study of microstructure of O/W emulsion, *3rd ASCS*, 287 (1997).
16. J. A. Bevacwua, M. K. Lahanas, and G. Cioca, Liquid crystals in multiple emulsions, *Cosmetics & Toiletries*, **106**, 53 (1991).
17. U. Citernes, M. Sciacchitano, Phospholipid/active ingredient complexes, *Cosmetics & Toiletries*, **110**, 57 (1995).
18. H. E. Junginger, Colloidal structures of O/W creams, *Pharmaceutisch Weekbad Scientific Edition*, **6**, 141 (1984).
19. N. Zahid and O. Edward, JP patent, 2003-231627 (2003).
20. I. Y. Kim, C. K. Zhoh, and H. C. Ryoo, Formation of proitamin-B5 liquid crystal with hydrogenated lecithin and its effectiveness of moisturizing activity, *J. of Korean Oil Chemists' Soc.*, **19**, 10 (2002).
21. I. Y. Kim, G. B. Lee, C. K. Zhoh, and S. W. Kang, Formation of lipid-LCG with hydrogenated lecithin, *J. of Korean Oil Chemists' Soc.*, **19**, 10 (2002).