

## Wig usage investigation which symbolizes the socio-economic status (Egypt~17C)

Jung, Hyun-Jin\* · Kim, Sung-Nam

Adjunct Professor, Dept. of Beauty Arts, Seo-Kyung University\*  
Professor, Dept. of Beauty Arts, Seo-kyung University

### Abstract

This study investigates historically difference by age of wig banishments that symbolize social-economic status from West Egypt era baroque age as qualitative study that use secondary bibliographic data, there is purpose. Conclusion of this study is as following. Because wig putting on that symbolize among several usages of wig putting on, socio-economic status until 17th century baroque age from ancient Egypt is been in fashion through privilege class lower classes as well as upper class wig putting on attain.

Ancient wig putting on became measure that divide class because differ material of wig or one dimension, shape (style) and length became linear measure that it can aim wealth's emblem that putting on of long wave wig and whole wig that differ lust has many wig though was in fashion though whole wig and were in fashion arriving to Renaissance. That it becomes France clean fingernails' necessities as Louis the 14th that ready crux of absolute authority establishment of France Court put wig from depilation to count 17 was clear socio-economic status etc. symbol measure inclination. Go without question status or position, wealth and churchman puts wig so that can know special sex of weapon of where the soldiers are belonged as well as put wig and wig putting on was parted according to job and lower classes participated in fashion of wig putting on. Wig putting on that become measure that symbolize job or status in this baroque age, position, wealth etc. gave absolute influence in wig fashion in 18th century.

**Key Words :** Wig wearing, symbol of socio-economic status, wig, hair piece

### I . Introduction

#### 1. Study background

The meaning that attach in symbol of clothes

was linked nearly in social backgrounds and person's role connected with the background, and clothes displays individual's position and it is symbol of class which offer authority.<sup>1)</sup>

Studied aesthetic page of West hat modern practical page and comparison modern age from 16th century 18th century in "two ways and study of feet style of West dress and its ornaments modern age" of research reactor yellow clothes (1985)<sup>2)</sup> about two ways so far Kim Eun Hee (1994) presented about change process of two ways and kind modern age in "Study of woman's head form and two ways".<sup>3)</sup>

Jeong geum suk (2000) presented meaning of symbol that searches meaning that wish to display two diet human inside expressions by emblem ancient Egypt to modern age in "Investigation about symbolism of two ways" through western dress and its ornaments four and changes in modern dress and its ornaments.<sup>4)</sup>

When seen in the same coherence, two ways that decorate head are the most important part forming unity sign of the sheep externally with clothes and protect head and at protection against the cold, room or was used to cover fault of face or head, and become class, status, symbol of religious authority etc. in ancient times. Also, among such several kinds of two ways, wig can be included in the area. Also, wig putting on that can speak as some of beauty art action have had inseparable relation with change of various esthetic sense and is consisted. It is estimation of people by sense rather than truth inflammation confirmation possible that see that human is beautiful and I change how absolute standard or singularity is prescribed without was decided socially. That is, can reason that aesthetic image which society does by singularity depends finally on social general atmosphere or tendency and social atmosphere reacts sensitively to economy,

political circumstance, change of tendency again.<sup>5)</sup> Wig putting on study that can be flower of two ways as well as existed with splendid compound expression in present age that is sensitive in scalp, hair care because there are little that virtue study about hair style or numerical formula have already achieved variously in dress and its ornaments four or beauty art four but wig putting on study that reflect the socio-economic status is achieved is necessary real condition.

## 2. study purpose and significance

Wig caused hair dressing's popularization in physiognomy with Rinchen Field's insistence as well as occupies important part for face style more than better form.

When lighten history if have been used since ancient Egypt era religion ceremony, division of duties, ornamental purpose, judicial officer, festival, back for the stage the use can know that have changed variously and is doing kind of wig according to period, environmental, social change and usage differently.

This study is doing to examine the difference by age of banishments that symbolize social and economical position from the Egyptian era to the baroque (17 C) age by purpose.

Though this study supplies data of specialized new beauty art education that equipping scientific system readying meter that can make understood European wig putting on culture that presents basic data connected with history of wig and reflects the socio-economic status concretely, there is sense.

## 3. study contents and method

This study is high qualified by the use of secondary literature material, the domestic literature showing the association between wigs and clothing studies and beauty and art studies are, <Beauty art esthetics and beauty art cultural history><sup>6)</sup>, <beauty art cultural history><sup>7)</sup>, <beauty art cultural history><sup>8)</sup>, and as for foreign literature, <西洋服飾發達史><sup>9)</sup>, <A History of costume in the West><sup>10)</sup>, <Histoire des Coiffures><sup>11)</sup>, <Histoire de la Coiffure><sup>12)</sup>, <LE CHEVEU><sup>13)</sup>, <Parfums & Cosmetique DANS L'EGYPTE ANCIENNE><sup>14)</sup>, <THE STORY OF ART><sup>15)</sup> were used for research. A virtue researcher Kim Du Im's<sup>16)</sup> "Investigation about Western woman's head form and ornament for the head", Kim Bok Suk's<sup>17)</sup> "Study of hair form and head of woman hair style", Kim Eun Hee's<sup>18)</sup> "Study of woman's hair form and head" -With modern western dress and its ornaments study as the central figure, Jeon Seon Jung's<sup>19)</sup> "Study of the change of Western Europe woman's hair form", Jeon Joo Jung's<sup>20)</sup> "Modern age, study of West woman's head form and numerical formula", Jang Mi Hee's<sup>21)</sup> "Study of wearing wigs and hair co-ordination for depilation customers", Jeong Gem Suk's<sup>22)</sup> "Investigation about symbolism of the head", Choi Man Jong's<sup>23)</sup> "Technological investigation of wig wearing by depilation", Hwang Eui Sun's<sup>24)</sup> "Study of Western dress and its ornament forms and the change of head formations. " were used as a central study .

Dresses and its ornaments already had an old history of study but beauty art's real condition that is that the system of study is insufficient. Whole beauty art connection study that is handled in dress and its ornaments books or study that handle concretely laying stress on majority or head and beauty art

through search of thesis connects directly with head because it is un reciprocated real condition even systematic arrangement of beauty art.

Partly handling already in dress and its ornaments studies as well as worldwide number is less very is thesis connected with head form or decoration was chosen and consulted some books connected with head and beauty art that is admitted frequently in this thesis. As a result, European wig putting on decorative purpose, purpose that serve to protect overhead from natural environment, baldness or quantity in usage such as less part, private purpose of private fault repletion etc.. that hide scalp region with wound, symbol purpose of religion custom, symbol purpose of social-economic status we could know that wig putting on was consisted .Among such several wig putting on usages, I wish to investigate historically difference by age of wig banishments that symbolize social -economic status laying stress on baroque (17th century) age from Egypt era.

#### 4. Study extent and Target

Extent of this study wishes to investigate historically difference by age of wig banishments that symbolize social-economic status from West Egypt era baroque age. 18th century is time that approach by fall time of wig fashion as go by latter half of 18th century as well as it was time of absolute fashion of wig. Based on this, decided from baroque age that is to be omen of 18th century absolute wig fashion from Egypt era that history of all territories begins to study extent.

Includes indeed even simple head sheaf

that use to extent of this study studied wig putting on that reflect the socio-economic status from West Egypt era Baroque age (17 C) and concept of wig expresses abundant volume of up style to be a household mascot star beside whole wig and mucket, hair piece making to scale hair or human work young rice plant except original hair that grow in scalp in this study.

## II. Concept and type of wig

Wig means imitation upper story that my head that hides baldhead or uses decoration in head for division of duties decoration is not. Ancient Egyptians were used first to protect bean curd from direct ray of light around B.C. 3000 if see history of wig and man and woman of all nobility classes put is splendid by Louis 14th. This effect celebrated golden age of wig laying stress on France since 17th century.<sup>25)</sup>

Wig was diffused gradually by Asia, Europe, America etc. in Europe over long time.

Pattern of wig can divide by used hair piece to covers whole wig of form and part of scalp that wrap whole scalp or changes temporarily one dimension. hair piece can classify by fall according to usage, switch, weft, wiglet, braid, chignon, color piece, cascade etc.<sup>26)27)</sup>

### 1. Wig

Wig changes selection standard of wig according to circumstance or purpose by whole wig of form that protect 95~100 of overhead.

It can make change by as well as wig is useful by substitute of hair decoration or by

various hair style. Individually a certain quantity exile, put wig in private usage for damage, in the case of baldness etc., or, occasion that hair loss is serious by impact of nervous system or antibiotics etc.. and to select fashion wig by another usage this puts wig by sensuous usage that display length of hair or decorative inclination of volume increase etc...

It can be used in the case for decoration or occasionally by special purpose by ephemeral straight hair using wig without damage of hair when it is a curly hair physically. Is used by any division of duties, representation, ornamental purpose etc..

### 2. Hair piece

I can make change of various image setting on personality of meeting or clothes is changing hair style by various kind of size and form but have telling effect.

1) Fall : Generally, is used in case change short hair by long hair's form temporarily.

2) Weft: when practice, is used by practice usage fixing in wig prop.

3) Switch : It is less Strand's alba but two foot lengths have been more than 20cm generally, and are consisted of 3 or 1 strand. It likes thing of 3 pieces to braids or wears style ring. Can produce beautifully if when wishes to give girlish looks in practical hair style, is used, and braids or dangles.

4) Braid : Shape that have braided hair is style that is several strand.

5) Chignon : Shape that have braided hair is style that is one strand.

6) Color piece : Is used doing by silicon or adhesives in partial hair one strand or change of color by several strand on cycle.



<Fig. 1> fall <Fig. 2> switch <Fig. 3> wiglet <Fig. 4> cascade <Fig. 5> chignon <Fig. 6> braid

7) Wiglet : uses doing height and volume on cycle in hair by hair piece that is used to produce special effect in specification region, or uses on saw part (top part) of hair by curl state.

8) Cascade : It is used when wish to produce abundant volume and crawling hair style.

9) Top piece : when does not exist or wishes to give volume, quantity is used in hair of top part.

In this study, everybody did various form of whole wig and hair piece person top piece fall of singularity, switch, weft, wiglet, braid, chignon, color piece color piece, cascade etc. by study target.

### III. Wig usage that reflects job, social position, position, wealth

#### 1. Ancient Egypt

Because surroundings was surrounded by desert except Nile river on the shore narrow area though ancient Egypt civilization developed laying stress on Nile river basin of attraction, foreign enemy's intrusion was difficult and I possessed geographical conditions that

can keep incestuous politics, economy, structure of a society. Also, climate developed by open esthetic sense form because warm and dry.

Ancient Egypt society stations by strong government of pharaoh that is an apotheosized king , social organization developed, and social class parted by royal family, nobility, bureaucratic nobility hierarchy and commoner slave. Therefore, a person engaged in production and hard work was most of slaves, nobility enjoyed composure of abundant life without laboring. Agriculture of economic base amounted to a week and stone processing, pottery, field of industry with metalwork developed fairly.

Existence of sun and river that relate in life of creature gives absolute influence in religion of Egyptians and (Ra) was strongest scape among their polytheism faith. Also, faith of eternity immortality that believe future life of Egyptians did important part which decide personality of Egypt civilization and leave huge remains such as pyramid.

Wig size and shape of such ancient Egypt era did man job and external indication role which display station in life. Peoples who social position is low by the one example used wig of short length and nobilities of valuable social position used wig of crawled length make of scale hair.

Ventilation is well observed closely people of midstream class made wig by fiber substitute of round hat or wool, or coconut palm leaf put pushing head, and that form by woolen fabric short if put.

Wealthy classes wig made form by scale hair was also complex as well as wig length was long. Wigs were very heavy because the wig hardens the end of the hair but the splendid decoration in the outside or the wig itself symbolized the social position of a person.

Progressed as a technology that decorate end of head that fixated, and braids on textile braiding hair entering in dynasty age with surgical operation or beeswax is remarkable and because was full-hearted, because should take effort over long time of dry hair on solar heat making wave circlewise sticking clay by stick after make form of wig, several kinds of wig possessions symbolized wealth and social position of the age. Also, man of low birth or slaves who can not use wig was easy cuts by VOV style or clips head and act.

The braid of the wig was stitched to a hat like shape and the temple part was adjusted by rinnen moreover, it helped the wig not to fall over the head. These wig making skills were surprisingly exquisite and delicate.

Shorts Bob style form relationship wig was used to royal by first by form and to general but utilized ordinary people later. Cleopatra's form of wig hid forehead and had lots of braids as well as the short cut of the bang as if it shapes the pyramid.

Though this Braid style produced intellectual feeling, this was do haircut so that form of indent appears consecutively marginally because kick makes step connect as small and nice and designs according to individual's face

and form that express fake hair smoothly .  
<Fig. 1>



**<Fig. 7> Ceremony wig (Egypt) that braid vegetable fiber to data**

That length of wig that comes to shoulder or braids to chest was for the people of high-class. Nature hair of wig inside trimmed or shaved perfectly clipping and putting wig and there was occasion that the wig was worn as it is wig indoors. But, the monk best judicial officers head with bare head nothing worn. Limited and elongated length of original head or wig in case of it is period of mourning in Egypt. Because various decorations were more splendor since new kingdom, I did part which symbolize king or patricianship and wrote that people of the lower classes form with wool in festival or family's ceremony slave makes and wore wig of shot style using own head. Also, wig use was forced from mem piece age that is B.C. 2686~2181 year country farmer class and servant class and other commoner class clips hair or was tonsured. Wigs of short length symbolized authority between women according to fashion and man and woman servants put wig of equal shape.

In case of wig of ancient Egypt binds braiding hair of Braid elder brother by several sheaf and puts wig as curl hardening by beeswax etc.. generally others everybody in state buzz cut that do not leave hair that cut hair maximum shortly forehead wig affect.<sup>28)</sup>

Women in these age wore wig in purpose such as in modern times the meaning of wearing a hat is fashionable as well as protecting the head from the sun.

King decorated wig by flower etc.. that symbolized authority and uses gold through wig and ephemeral mustache putting on or plates gold leaf.

Also, women who position high and rich though could divide the position according to wig site dangled on shoulder putting ribbon decoration that used human hair and plate gold leaf breadthways on forehead and knot ribbon to back and emphasized Girlish and beauty.

Wig of Egypt with singularity made externally much changes by abundant materials and form than clothes and display social position between nobilities according to decoration.

Because it is in fashion foster head that is long by Rome style from control of emigrations after that long, wig was out of fashion more.

Assyria B.C. 1200 ~ B.C. Its first empire that integrate Mesopotamia area to the country reviving about C .540 years and formal attire self-satisfaction temper a lot of them to introduce east element doubles with development of service uniform big effect give. By this though rich class and Court people here used wig of shape such as resting rock and archaeological datas of small quantity that do hairdo that head that Phoenicia and Carthago are slimy is twisted

were discovered Egypt receive that effect of wig putting on mode of Mesopotamia and Ionia beauty art by beginning conjecture can.

Resting rock that suffer impact of Mesopotamia beauty art concretely by resting rock of 4000 B.C. second half of the year that archeologists find, comb slimed but had been That frozen hard to fixed interval looking forward to as round and delicate as this encloses to a pipe by form that curly hair descends awesomely to face lower part on cheek as these apotheo sized people or imprints is smart though quantity does person shape that seemed to have hair that is embellished as many and undefiled.

## 2. Renaissance



<Fig 8> Hair form using French Pad

<Fig 9> Hair form using wire and french pad

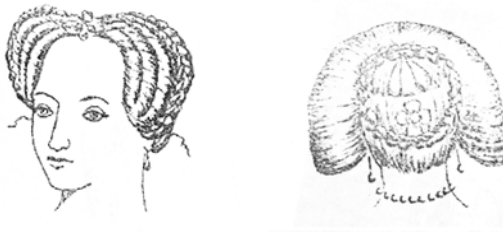
In 14~16 century Renaissance age, whole wig or hair piece was produced in large quantity because characteristic hairdo was very blown-up form, and especially the queen of Scotland Mary Stuart's was wearing a wig when paraphrase wig to interval a day in interval was confined in prison importing wig in France because was abundant style that do to forms by Moda of 6 inches and forms a lot of WAVs and rises to block specially. Through this, for simply sensuous leading person

queen on wig more than wig putting on social position give authoritative meaning analogize can. English mans had many women who prefer imitate queen of red hair and dye by maroon or red and dyed various lust in any golden hair head. Also, was supplemented by jewel ornaments to adjust Patinggeil's width and balance and put various color wig.

<Fig. 8> <Fig. 9> <Fig. 10-1> <Fig. 10-2>



<Fig. 10-1> french wig

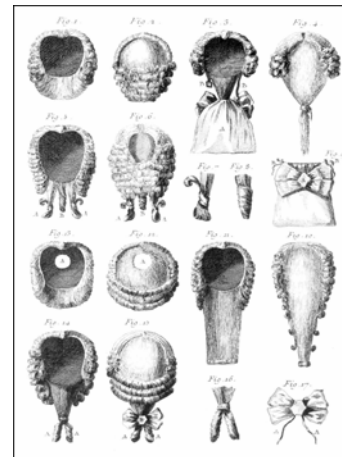


<Fig. 10-2> french wig

### 3. Baroque

Early part wig in 17th century church mans who seek vogue can use easily make and wig of the soldiers was made to know special sex of position and weapon in 1650. Because women of same time use wig, women raise high head and made hair do not scatter using pomade made exquisite form, and do up ribbon here or inserted pin that big comb is beautiful, rose etc.. Also, sprinkles perfume and stuck favorite color powder (gold color or

red color).<sup>29)</sup> I should move head carefully so that do not scatter even if heads that raise high was decorated to wire frame and displays generally aristocratic atmosphere and women are for carriage.



<Fig. 11> Wig type of man (17 C)

Wig type of man <Fig. 11> in 17th century was used sprinkling powder to full-bottomed wig that give volume feeling does and swells on part by center parting that was an essential in Europe cafe society but such large-sized wig so that a person or old man, Court fortune, judicial officer, church mans etc. engaged in para professional because is unsuitable in horse riding and battle from the 1730s equips dignity or while is used by decoration that is formal in back opera, dance party etc.. full bottom wig fashion with enthronement of Louis disappear.

17th century middle part, distant ages anger of France sovereign power plays an important part in France dress and its ornaments culture after teeth. Kings is absolute and very logical phenomenon of that the country supports this was spread over all Europe as well as France



people. Civil life accomplishes the wave and throne by origin, and dress and its ornaments culture France kingly rule control have. Nobilities of France Court focused to decorate to decorative space such as clothes and personal ornaments, industrial art objects, furniture etc. to demonstrate power.

Through this, It can know that absolute vogue became hay chopping that symbolize power of nobilities if it is two ways.<sup>30)</sup>

In 1656, boom of wig was made up enough to 40 humanity and justices wig four was invited to palace.



<Fig. 12> Louis 14th

I might think audaciously if appear with bare head without wearing wig one person is reigning from 1660. Wig spread by fashion that is absolute on France as well as Royal Court and city and whole Europe. In 1680 wore Louis 14 public morales wig that grew dark brown curly hair beautifully he head was tonsured perfectly and put wig(wig). if it is (Fig12) king's dog manufacturer Binet that cover whole overhead that curl that come to hip line 'Binet grand intatio' that is of name oneself for king comes crawl enough to can not balance because is heavy by shape that is slimy in strata like waterfall building high huge building uncomfortable. Kind of wig was

various according to job and shape hair by a curly lion mane shape sheep hair shape, rhinoceros, word, comet, moon, wind etc. imagination of wig four end be.

Louis 14 plucked justly jumbled society from middle ages to holy war and political internal trouble that enclose him keeping throne until early 18th century.<sup>31)</sup> Because he suggested absolute power that is based in divine to the right of kings, oneself committed suicide 'Burden is country (L 'etat, c' est moi) soon' and administered border directly. Because he appoints able prime ministers such as Mazarin (Giulio Mazarin, 1602~1661) that ready France's absolutism crux or Colbert (Jean Baptiste Colbert, 1619 ~ 1683) that contribute in French economy by mercantilism policy, he executed administration structural order of complex structure.

Law, administration, religion, art, literature etc. were formed in control lower part of the country as royal governing in person of Louis 14th is begun and vast country by the territory war, superior people who is art sex, international business city development etc. were attained. These condition the European political power center in performance to France absolute influence absolute power of France Court at the same time handful ready confirmed crux make. This derived authority and dignity that symbolize kingly rule because enhance society atmosphere by form and social structure that luxury taking a serious views. As society atmosphere, symbolic dignity and authority is whole harmony or jar gorgeousness that is irrespective with effect was omen of rococo art as cause that bring into existence mode of volume if is big splendid lace, expensive tenia etc.. etc. gigantically by purpose.<sup>32)</sup>

His hair style that made basis of all technologies about Hair design that France is having today and displays splendor of Versailles Palace (Palais de Versaille) by the name of flower of Louis dynasty as luxurious monarch is luxurious golden age of wig be. Louis 14 confidence disliked wig was a beautiful hair but when is 33 years old, I speak that wore wig at first. I come back in hunting or walking after have dinner often paraphrased strong Louis 14, and I speak that put is fit in time and place depending on back day before attend to the dinner.<sup>33)</sup>

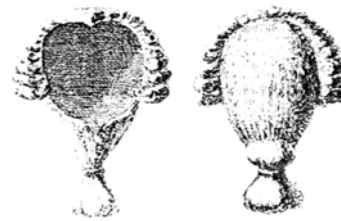
Taking a serious view peacockery and under go a change by shallow aspect becoming form putting first as go by 17th century olfactory lobe. Therefore, taking a serious view whole creation in Renaissance age, in baroque age decoration of each part without relation in effect with whole harmony decoration itself list. That is, display only gorgeousness that do not seek aesthetic value.

Since the 1660, curly hair was long the length enough to hair covers shoulder and chest and peri wig of form that pass taking off bow backward, there is recording that there were 200 wig four in France Court though it was been in fashion widely use full bottom wig that is if very heavy and huge.

France Court people can analogize made up boom of wig by it as well as symbolized own social position and authority wealth through wig by this recording.

At this time, Allongé is small at first though it was in fashion tell men to be Allonge and I made by possible natural form but begin to grow piecemeal passing 1670, very middle swelling part and the right and left high length breast-deep come may and smears powder

here man head be the biggest historically and was the blown-up est style. When there is this wig indoors comfortably, I wore headgear that takes off and embroiders and two charged bodies were form reworked by style that become cut shortly.



<Fig. 13> Cattogan

Style that bind end of hair by cattogan style that was been in fashion very to 18th century men in late 17th century showed. people of the lower classes in <Fig. 7> these centuries to is made to show their nature hair like wig because it was no composure that is worth wig try. Merchants clipped far their nature hair than fashion and were laborers as well as nature hair.

As Oreulre Anggong's regency is begun, regular rococo age was opened with this special quality. Oreulre Anggong blames Louis 14 ruling organization and abandoned Versailles that Bureubong's royal household is and enjoys dance party festival etc. returning to fly palace and created new atmosphere. Baroque's formality of strict example and formal lifestyle created rococo style that the personality can talk as major term of France style by is dwindled by luxurious life and in-sincered tendency of upper class was continued, and is free hating limitation of all or compulsion and changes surrounding environment that can have comfortable feeling with king as the central figure.

&lt;Table 1&gt; Wig putting on that symbolize social-economic status by wig division

wig era	type	color	length	material	possession number
B.C. 14C Egypt		upper stream: colorful wigs	upper stream:long and fancy form lower stream: short and simple	upper stream: real persons hair lower stream: sheep fur, coconut leaf	
B.C. 1200~540C	Upper stream : Delicately braided hair piece				
B.C. 7C~6C Greece	Upper stream men: Crobilos hair bunch	upper stream women: Red			
B.C. 4C Sparta		upper stream women : Gold			
A.D. 1C Rome					Royal Queen Methalin:owned more than 300 wigs
A.D.14C					Queen Mary Stuart :Imported high quality wig from France
A.D.15C	Louis II: wearing the crown after giving volume with a high hair bunch representing high authority				
A.D.16C		Queen Margo: Had variety of wigs in different color			Queen Elizabeth: Owned more than 80 wigs

<Table 1> continue

wig era	type	color	length	material	possession number
1600	peri wig, full bottom wig, cattogan				
1650	Army :Wig putting on that distinguishes speciality of osition weapon and differs type				
1673	Upper stream women : high upstyle hair using a hair piece  Louis XIV: representing the Kings authority Noblesse:represe nting power				

### III. Conclusion

Wig putting on that reflect among several usages of wig putting on, job, social position, position wealth of West was consisted until 17th century baroque age through privilege class from ancient Egypt. This does that dress and its ornaments putting on is consisted according to difference of social position or class and vein face. Fashions of hair style with dress and its ornaments was attained but fashion of dress and its ornaments and wig putting on that allow limitation in color either social position or site according to class can not differ.

If it is as following summarize investigation result. That length has many wig though putting

on of long wave wig and whole wig that differ lust was in fashion though ancient wig putting on became measure that divide class because differ material of wig or one dimension, shape (style) and whole wig and mucket were in fashion arriving to Renaissance became measure that can aim wealth's emblem.

So that fashions inclination of wig putting on began to be more clearer reaching in 17th century but soldier or wig putting on of church mans was general and a person or old man, Court fortune, judicial officer, church mans etc. engaged in para professional equips dignity or measure that express job and social position through these wig putting on though wig putting on was consisted by decoration that is formal to opera, dance

party back become. Louis the 14th that ready crux of absolute authority establishment of France Court evaded wig putting on having beautiful hair but when is 33 years old, put wig first from depilation. As clean fingernails of France Court symbolizes wig king's authority by this king's influence though he put because exchange several times wig in time and day according to place, wig became necessities.

Like this France Court people underwent a change by shallow aspect taking a serious view peacock because become form putting first as go by latter half of baroque age can analogize made up boom of wig by it as well as symbolized own social position and authority wealth through wig but wig putting on tried so that people of the lower classes who can not buy wig because thought audaciously if do not put wig because is essential to ordinary peoples are shown original hair artificially like wig.

Because wig putting on that become measure that symbolize job or status, position, wealth etc. reaches in 17th century, the inclination was clear and I gave impact that is absolute in wig fashion in 18th century.

Conclusion is as following by singularity.

### 1. Ancient wig wear

Wig in Egypt era each battle formation crack usually that color of wig, length, site became measure that symbolize social-economic status can be known.

Differs type and color of wig until Sparta era about B.C. 4 century from BC.1200 years and symbolized social-economic status.

A.D.1century Rome era symbolized open channel queen's authority if hold about

century.

A.D.15th century Louis give volume in head crown of the head using head skein about century and symbolized king's authority by putting crown high.

### 2. Renaissance age

Queens symbolized open channel queen's authority of if differ and have color.

### 3. Baroque age (17 C)

King or nobility, soldier differs type and symbolized social-economic status.

Based on this study, succession study that divide job, status, wig putting on that reflect position, wealth etc. by name of specific wig pattern and theme, form, size etc. may have to be achieved.

## Reference

- 1) Kim Sun Shim·Yu Eun Hee·Lee You Kyung ·Lee Eun Sook .(1991).“*Dress society, Physcology*”, Seoul, Kyung Chun temple.
- 2) Hwang Eui Sun.(1985).“*Two of the modern age Western dress and the research regarding a variation*”, Hongik Univ. masters thesis,
- 3) Kim Eun Hee.(1994).“*Research on womens hair style and head*”, Sungshin Womens Univ. masters thesis.
- 4) Jung Gem Sook.(2000). “*Investigation against frost of head*”, Chosun univ. masters thesis.
- 5) Jung Hyun Sook.(1995). “How the society influences fashion models”, *Korean*

- clothing institute.19(1).
- 6) Jeon Seon Jung and 3 others.(2001) ,*"Beauty art esthetics and beauty art cultural history"*. cheonggu cultural publishment.
  - 7) Kim Chun Deuk..(2000),*"Beauty art cultural history"*, cheonggu cultural publishment.
  - 8) Jeong Hyun Jin.(2004). *"Beauty art cultural history"* ,Kwang Mun Kak.
  - 9) Dan Ya Wook.(1965).*"Western dress and its ornaments development study"*. Tokyo : Kwang Seang Kwan,
  - 10) Francois Boucher.( 1987), *"A History of coustume in the West"*. THAMES AND HUDSON.
  - 11) Mary Trasko.(1994), *"Histoire des Coiffures"*. Flammarion.
  - 12) Paul Gerbod.(1995), *"Histoire de la Coiffure"*. LAROUSSE.
  - 13) Pierre Gascar.(1998), *"LE CHEVEU"*. NATHAN.
  - 14) Ambassade de France en Republique Arabe d'Egypte.(2002), *"Parfums & Cosmetique DANS L'EGYPTE ANCIENNE"*. Nubar Press.
  - 15) Gombrich, E.H.(1995), *"THE STORY OF ART"*. Phaidon Press.
  - 16) Kim Du Im.(1972), *"Investigation about Western woman's head form and ornament for the head"*. Ewha Womans University masters thesis.
  - 17) Kim Bok Suk.(1999), *"Study of hair form and head of woman hair style"*. Inha University masters thesis.
  - 18) Kim Eun Hee.(1994), *"Study of woman's hair form and head" -With modern western dress and its ornaments study as the central figure"*. Seongsin womens University masters thesis.
  - 19) Jeon Seon Jung.(1994), *"Study of the change of Western Europe woman's hair form"*. Ewha Womans University masters thesis.
  - 20) Jeon Joo Jung.(2001), *"Modern age, study of West woman's head form and numerical formula"*. Seongsin Womens University Doctoral dissertation.
  - 21) Jang Mi Hee.(2002), *"Study of wearing wigs and hair co-ordination for depilation customers"*. Deagu Catholic University master's thesis.
  - 22) Choi Man Jong,(2004), *"The technical investigation which it follows in wig wearing which it follows in dehairing"*, Hannam Univ. masters thesis,
  - 23) Jung Kum Suck.(2000), *"Investigation about symbolism of the head"*. Chosun University master's thesis,
  - 24) Hwang Eui Sun.(1985), *"Study of Western dress and its ornament forms and the change of head formations."*. Hongik University masters thesis.
  - 25) Study of beauty books publish center.(1993).*"generalized beauty theory"* ,Yoo shin culture co.,p.183.
  - 26) Lee Won Kyung.(2001).*"HAIR concept & application"*,Chung goo publishment.p.277.
  - 27) Noh Jeong Ae.(2004).*"Hair setting & Up style"*, Hun Min Publish,p.109.
  - 28) Choi Man Jong.(2004).*"The technical investigation which it follows in wig wearing which it follows in dehairing"*, Hannam Univ. masters thesis, p.4.
  - 29) Dan Ya Wook.(1965).*"Western dress and its ornaments development study"*. Tokyo : Kwang Seang Kwan,p155.
  - 30) Kim Eun Hee.(1994). *"Research on Womens hair shape"* ,sungshin womens Univ. masters thesis, p.9.
  - 31) Jeong Hyun Jin.(2004). *"Beauty culture"*

- publish ,Kwang Mun Kak .pp.78~79.
- 32) Ahn You Ri.(2004). "*Hair fashion trend of the 18th century Rococo*", Hannam Univ. masters thesis, p.5.
- 33) Choi Man Jong,(2004), "*The technical investigation which it follows in wig wearing which it follows in dehairing*", Hannam Univ. masters thesis, p.9.

---

Received 3 Aug. 2005, Accepted 19 Oct. 2005.