

Comparison of specific activity and cytopathic effects of purified 33 kDa serine proteinase from *Acanthamoeba* strains with different degree of virulence

Won-Tae KIM¹⁾, Hyun-Hee KONG¹⁾, Young-Ran HA¹⁾, Yeon-Chul HONG¹⁾, Hae Jin JEONG²⁾, Hak Sun YU²⁾ and Dong-II CHUNG^{1)*}

¹⁾Department of Parasitology, Kyungpook National University School of Medicine, Daegu 700-422,

²⁾Department of Parasitology, Pusan National University School of Medicine, Pusan 602-739, Korea

Abstract: The pathogenic mechanism of granulomatous amebic encephalitis (GAE) and amebic keratitis (AK) by *Acanthamoeba* has yet to be clarified. Protease has been recognized to play an important role in the pathogenesis of GAE and AK. In the present study, we have compared specific activity and cytopathic effects (CPE) of purified 33 kDa serine proteinases from *Acanthamoeba* strains with different degree of virulence (*A. healyi* OC-3A, *A. lugdunensis* KA/E2, and *A. castellanii* Neff). Trophozoites of the 3 strains revealed different degrees of CPE on human corneal epithelial (HCE) cells. The effect was remarkably reduced by adding phenylmethylsulfonyl fluoride (PMSF), a serine proteinase inhibitor. This result indicated that PMSF-susceptible proteinase is the main component causing cytopathy to HCE cells by *Acanthamoeba*. The purified 33 kDa serine proteinase showed strong activity toward HCE cells and extracellular matrix proteins. The purified proteinase from OC-3A, the most virulent strain, demonstrated the highest enzyme activity compared to KA/E2, an ocular isolate, and Neff, a soil isolate. Polyclonal antibodies against the purified 33 kDa serine proteinase inhibit almost completely the proteolytic activity of culture supernatant of *Acanthamoeba*. In line with these results, the 33 kDa serine proteinase is suggested to play an important role in pathogenesis and to be the main component of virulence factor of *Acanthamoeba*.

Key words: *Acanthamoeba*, amebic encephalitis, amebic keratitis, serine proteinase, cytopathic effects

INTRODUCTION

Members of the genus *Acanthamoeba*, one of amphi-zoic amoebae, are ubiquitous in nature and are found in diverse habitats including soil, water, air-conditioning units, contact lenses, and lens cases (Marciano-

Cabral and Cabral, 2003; Schuster and Visvesvara, 2004). In recent years, *Acanthamoeba* spp. became a public health issue as causative agent of amebic keratitis (AK) and granulomatous amebic encephalitis (GAE) (Alfieri et al., 2000; Marciano-Cabral et al., 2000). GAE associated with individuals suffering from underlying diseases progressed chronically and usually ended with fatal results (Marciano-Cabral and Cabral, 2003). AK, relatively more common than GAE, affects young and healthy individuals particularly contact lens wearers.

• Received 20 June 2006, accepted after revision 13 November 2006.

• This work was supported by a Korea Research Foundation grant (KRF-2001-042-F00031).

*Corresponding author (e-mail: dichung@knu.ac.kr)

Although studies to define pathogenic mechanisms have been conducted, the mechanisms by which *Acanthamoeba* give rise to human diseases remain poorly understood. It is generally recognized that pathogenesis of *Acanthamoeba* infections is a multi-step process involving adhesion to host cells, degradation and invasion into host tissues in both cases of GAE and AK. Amoeba may access to the central nervous system to cause GAE by hematogenous spread from a primary site in the lungs or skin. In the case of AK, amoeba from environment may attach to the injured surface of cornea and invade the stroma. Up to date, proteinases and adhesion molecules such as laminin binding protein and mannose binding protein have been investigated to understand the pathogenic mechanisms of *Acanthamoeba* (Hong et al., 2000; Garate et al., 2004; Hong et al., 2004).

As in various protozoan parasites, proteases secreted by *Acanthamoeba* are regarded as an important factor in the pathogenesis (Mckerrow et al., 1993). Serine proteases have been the most extensively investigated but most were focused on keratitis. Leher et al. (1998) reported that mannose treatment induced *Acanthamoeba* trophozoites to release cytopathic factors and lyse corneal epithelial cells in vitro. The cytopathic activity was completely inhibited by a serine protease inhibitor. In contrast, Cao et al. (1998) showed that inhibition of amoeba binding to corneal epithelial cells with exogenous mannose resulted in loss of cytopathogenicity of *Acanthamoeba* on host cells. Khan (2003) suggested that serine proteases play a crucial role in the pathogenesis of *Acanthamoeba* keratitis, because a serine protease inhibitor abolished cytotoxicity of *Acanthamoeba* conditioned medium on corneal epithelial cells. However, effects of purified enzymes of *Acanthamoeba* on cytopathy have seldom been studied.

Previously, a secretory 33 kDa serine protease of *A. healyi* OC-3A isolated from the brain of a GAE patient was purified and characterized (Kong et al., 2000). The serine protease revealed strikingly potent proteolytic activity against mammalian extracellular matrix proteins including types I and IV collagen and other serum proteins. Hong et al. (2000) isolated a cDNA

encoding a 33 kDa serine protease (AhSUB), and identified the protease to be a member of subtilase superfamily. Northern blot analysis revealed that AhSUB was expressed at higher levels in the high-virulent strain than low- or avirulent strains. Recently, we confirmed the secretion of a 33 kDa serine protease from ocular and environmental isolates of *Acanthamoeba* (Kim et al., 2003).

In the present study, the authors have compared specific activity and cytopathic effect of purified 33 kDa serine proteases from *Acanthamoeba* strains with different degree of virulence (*A. healyi* OC-3A, *A. lugdunensis* KA/E2, *A. castellanii* Neff) and proposed the protease as a virulence factor for *Acanthamoeba* infections.

MATERIALS AND METHODS

Culture of amoebae

Three strains of *Acanthamoeba* with different origin were used in this study. *Acanthamoeba healyi* OC-3A (ATCC #30866) isolated from the brain of a GAE patient (Moura et al., 1992) and *A. castellanii* Neff strain (ATCC #30010) isolated from soil were obtained from American Type Culture Collection (Rockville, Maryland, USA). Corneal isolate *A. lugdunensis* KA/E2 was originated from the infected cornea of a Korean AK patient (Yu et al., 2004). They were cultured axenically in PYG medium at 25°C.

Assay of cytopathic effect (CPE) on human corneal epithelial (HCE) cell culture

HCE cells for cytopathy assay were kindly provided by the Department of Biochemistry, Kyungpook National University School of Medicine, Daegu, Korea. Cells were cultured in DMEM/F12, 15% fetal bovine serum, 5 µg/ml insulin and 10 ng/ml human EGF at 37°C under 5% CO₂ condition. Monolayered HCE cells in 96-well culture plates were coincubated with 2 × 10⁵ trophozoites of one of the 3 strains of *Acanthamoeba*, i.e., OC-3A, KA/E2 and Neff, for 24 hr at 37°C under 5% CO₂. Phenylmethylsulfonyl fluoride (PMSF) (0.1 mM), one of the serine proteinase inhibitors, was added to each well with same cocul-

ture conditions to estimate the effects of serine proteinase on cytopathy by *Acanthamoeba* trophozoites. CPE was assessed visually after Giemsa staining and measurement of optical density (OD) at 590 nm with 0.1 ml of cells solubilized in 0.4 ml of 5% sodium dodecyl sulfate in phosphate buffered saline. Percent CPE was calculated according to the following formula: % CPE = 100-[(OD of experimental well-OD of amoeba alone)/OD control cells alone] x 100. Assay was performed in triplicate. CPE by purified subtilases was determined by the same way. One, 2 or 10 μ g purified enzymes of 3 *Acanthamoeba* strains were incubated with monolayer of HCE cells for 24 hr at 37°C under 5% CO₂.

Purification of subtilase

Purification of 33 kDa serine proteases from culture media of 3 strains were performed as described in previous papers (Kong et al., 2000; Kim et al., 2003). The amoeba culture supernatant was precipitated with 65% ammonium sulfate and centrifuged at 10,000 rpm for 15 min. The pellet was dissolved in 50 mM sodium acetate buffer (pH 5.2) and dialyzed against the same buffer at 4°C for 30 hr. The dialyzed solution was then applied to a CM-Sepharose column (3.0 x 17 cm) equilibrated with 50 mM sodium acetate buffer (pH 5.2), and eluted with a 0.1 M NaCl gradient at a rate of 0.5 ml/min, with 5 ml of fraction volume. Each fraction was tested for enzymatic activity. The active fractions were pooled and dialyzed against 20 mM Tris-HCl (pH 8.8). The dialyzed solution was concentrated using a freeze dryer (Bondiro, Ilshine, Korea). The concentrated solution was loaded onto a Sephacryl S-200 column (HiPrep 1.6/60, Amersham, Uppsala, Sweden) and fractionated at a rate of 0.5 ml/min into 2.5 ml fraction volumes. Pooled active fractions were applied to a mono Q-anion-exchange column (Mono Q HR 5/5, Amersham, Uppsala, Sweden) and eluted with a 0-0.35 M NaCl gradient in 50 mM Tris (pH 8.0). Fractions showing proteinase activity were retained for further characterization.

Assay for enzyme activity

The proteinase activity was assayed against casein.

A mixture of 500 μ l of 0.6% casein (Sigma Co., Steinheim, Germany) in 50 mM Tris (pH 8.0) and 100 μ l of enzyme was incubated for 2 hr at 40°C. The reaction was stopped by adding 500 μ l of 0.4 M trichloroacetic acid and incubating at 40°C for 10 min. After centrifugation, 200 μ l of supernatant was mixed with 1 ml of 0.4 M sodium carbonate and 200 μ l of Folin-Ciocateu reagent (Bio-Rad, Hercules, California, USA) and incubated at 40°C for 20 min. The amount of degradation was determined from the absorbance at 660 nm. One unit of enzyme activity was defined as the amount of enzyme necessary to elaborate 1 μ l of tyrosine from casein in 1 ml of reaction volume per min. Bradford dye-binding procedure (Bradford, 1976) was used to determine the protein concentration except during chromatography where absorbance was monitored at 280 nm.

Optimum conditions (pH and temperature)

The pH optimum was monitored over the pH range 5.5-10.0 using casein as a substrate. The buffer formulations used were 50 mM sodium acetate buffer at pH 5.5-6.0, 50 mM sodium phosphate buffer at pH 6.0-8.0 and 50 mM Tris-HCl at pH 8.0-10.0. The optimal temperature was also monitored by incubation at temperature ranging from 4°C to 65°C.

Inhibitor and activator sensitivity

Various effectors, namely PMSF (1.0 mM), diisopropyl fluorophosphate (DFP, 1.0 mM), L-transepoxy-succinyl-leucylamide (4-guanidino) butane (E-64, 10 μ g/ml and 50 μ g/ml), dithio-threitol (DTT, 1.0 mM), pepstatin A (1.0 μ g/ml), EDTA (1.0 mM and 10.0 mM), 1,10-phenanthroline (1.0 mM) were preincubated with the purified enzyme for 20 min at 37°C. Substrate was added and the proteolytic activity was assayed. All proteinase inhibitors and activators were purchased from Boehringer Mannheim Biochemicals (Mannheim, Germany).

Gelatin dot zymogram

Five hundred micrograms of purified serine proteinases in 500 μ l volume of three *Acanthamoeba* strains were loaded on the hole of 3 mm diameter on

an 10% acrylamid gel copolymerized with 0.1% gelatin without SDS. The gel was incubated in 37°C for 24 hr. The inhibitory effect of PMSF was tested with the proteinase sample preincubated with 0.1 mM PMSF for 30 min at room temperature. After reaction, the gel was stained with Commassie blue and destained several times with 40% methanol and 10% acetic acid. The proteolytic activity of the enzyme from 3 strains was compared with the size of visualized clear zone where gelatin was degraded by the enzyme.

Substrate specificity

The substrate specificity of purified subtilases was analyzed with mammalian extracellular matrix (ECM) proteins, i.e., type I and IV collagens, fibronectin, and laminin. Five hundred micrograms of each substrate, dissolved in 0.1 M sodium acetate buffer (collagens) or 50 mM Tris-HCl, pH 7.4 (fibronectin and laminin), at a concentration of 1 mg/ml, was mixed with 1 µg of the enzyme and incubated at 37°C. Twenty-five microliter aliquots were withdrawn from the reaction mixture after 10 min, 30 min, 1 hr, 2 hr, 4 hr, and 6 hr and electrophoresed in a 4-20% gradient acrylamide gel. After electrophoresis, the gels were stained with 0.1% Coomassie blue.

Inhibition of proteinase activity by antibody against 33 kDa serine proteinase

Inhibition of proteinase activity of culture supernatant by antibody against 33 kDa serine proteinase was analysed. Antibody produced as previously described by Hong et al. (2004) was preincubated with culture supernatant which was obtained by incubation 3.0×10^6 trophozoites of three *Acanthamoeba* strains for 18 hr in 1.5 ml medium. Two microliters of supernatant of three strains were preincubated with two microliter of 20 fold diluted antibody at 37°C for 20 min. The mixture of each strain was loaded on 3 mm diameter-hole of 10% acrylamide gel copolymerized with 0.1% gelatin without SDS. After incubation at 37°C for 24 hr, the gel was stained with Commassie blue. The inhibition of proteinase activity of culture supernatant was analyzed by comparing the size of

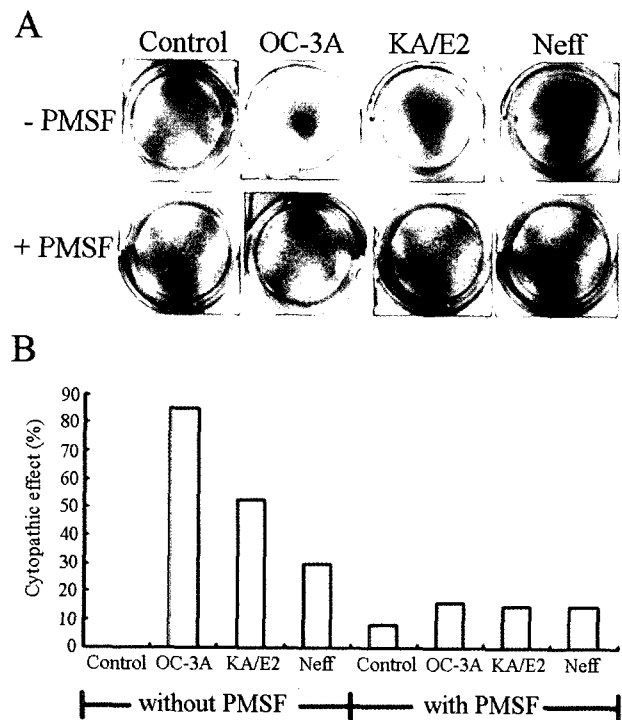


Fig. 1. A. Light microscopic pictures of Giemsa stained human corneal cells after coculture with trophozoites of the 3 strains of *Acanthamoeba*, OC-3A, KA/E2 and Neff, with or without serine proteinase inhibitor, PMSF. B. Bar graph showing calculated cytopathic effects of the 3 strains.

clear zone around the hole where gelatin was degraded.

RESULTS

CPE of *Acanthamoeba* trophozoites

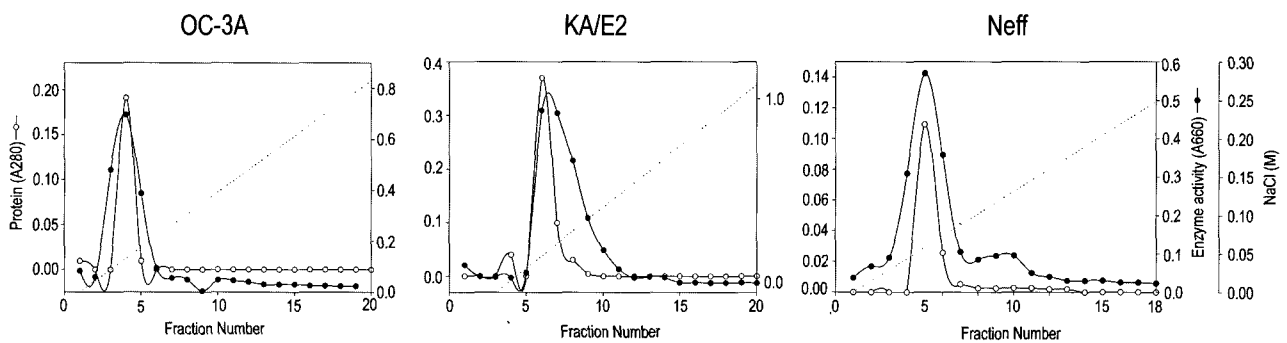
Fig. 1 shows the CPE on HCE cells by trophozoites of *Acanthamoeba* 3 strains, OC-3A, KA/E2, and Neff. Calculated CPE on HCE cells were 85% by OC-3A, 53% by KA/E2 and 30% by Neff strain. HCE cells remained almost intact in 0.1 mM PMSF treated culture plates. The CPE of trophozoites of the 3 strains on HCE cells were reduced remarkably to 16%, 15% and 15%, by adding 0.1 mM PMSF to the coculture media.

Purification and specific activity of serine proteinases

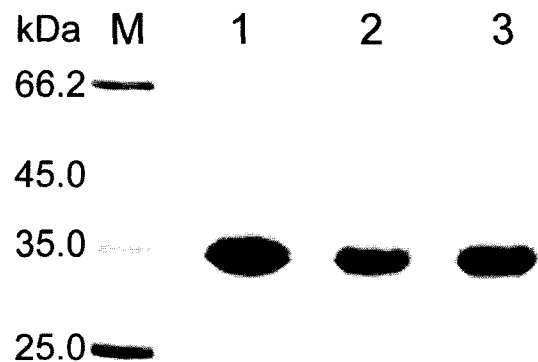
The purification steps to separate the 33 kDa prote-

Table 1. Purification steps of 33 kDa serine proteinase from culture supernatant of 3 strains of *Acanthamoeba*, OC-3A, KA/E2 and Neff

Step	Total protein (mg)			Total activity (nmol/min)			Specific activity (nmol/min/mg)			Purification (fold)			Yield (%)		
	OC-3A	KA/E2	Neff	OC-3A	KA/E2	Neff	OC-3A	KA/E2	Neff	OC-3A	KA/E2	Neff	OC-3A	KA/E2	Neff
Culture supernatant	135.0	156.3	246.1	1836.3	813.0	516.7	13.6	5.2	2.1	1.0	1.0	1.0	100.0	100.0	100.0
Ammonium sulfate precipitation	25.3	28.0	30.0	1120.7	770	426.0	44.3	27.5	14.2	3.3	5.3	6.8	61.0	94.7	82.4
CM-Sepharose	8.0	3.7	6.5	763.0	243.1	226.9	95.5	66.6	34.9	7.0	12.8	16.8	41.6	29.9	43.9
Sephacryl S-200	0.4	0.3	0.4	364.5	142.6	120.6	1041.4	570.3	335.0	76.6	109.7	159.5	19.8	17.5	23.3
Q-anion exchange	0.04	0.03	0.02	45.8	26.1	10.6	1145.0	814.4	704.6	84.2	156.6	335.5	2.5	3.2	2.0

**Fig. 2.** Anion exchange column chromatograms of proteinase purification from the culture supernatant of *Acanthamoeba* strains, OC-3A, KA/E2 and Neff.

olytic enzyme from the culture supernatant of *Acanthamoeba* 3 strains, OC-3A, KA/E2 and Neff are summarized in Table 1 and Fig. 2. Ammonium sulfate precipitated culture supernatant of three strains was applied on the CM sepharose column. Pooled fractions showing proteolytic activity were applied on Gel filtration column for further purification. Pooled fractions with proteolytic activity were applied on anion exchange column. One protein peak was matched with proteolytic activity peak (Fig. 2). Purified proteinase of the 3 strains was electrophoresed on a SDS-PAGE gel and determined as a single protein band (Fig. 3). The final amount of purified serine proteinase from 1 L of collected culture media was 0.04 mg for OC-3A, 0.03 mg for KA/E2 and 0.02 mg for Neff strain. The specific activity for 1 mg of purified proteinase was highest in OC-3A with 1145.0 units, followed by KA/E2 with 817.4 units, and Neff with 704.6 units.

**Fig. 3.** SDS-PAGE of the purified enzyme of the 3 strains, OC-3A, KA/E2 and Neff in a 4-20% gradient acrylamide gel. A single protein band stained with Coomassie blue is observed with a size of approximately 33 kDa in 3 strains. Lane: M, standard size marker; 1, OC-3A; 2, KA/E2; 3, Neff strain.

Optimum conditions (pH and temperature)

The purified proteinase of all 3 strains, OC-3A, KA/E2 and Neff, maintained enzymatic activity with wide range of pH 5.5-10.0, and showed maximum

Table 2. Effects of proteinase inhibitors and activators on the activity of the purified enzymes of 3 strains of *Acanthamoeba*

Inhibitor/Activator	Final concentration	Activity as percentage of control		
		OC-3A	KA/E2	Neff
Control (none)		100.0	100.0	100.0
Serine Class				
PMSF	1.0 mM	6.1	6.9	7.3
DFP	1.0 mM	15.3	15.9	16.7
Cystein Class				
E-64	10.0 µg/ml	115.8	96.7	93.3
DTT	1.0 mM	111.9	85.8	102.0
Aspartic Class				
Pepstatin A	1.0 µg/ml	107.9	97.4	96.7
Metallo Class				
EDTA	1.0 mM	102.6	108.3	90.3
1,10-Phenanthroline	1.0 mM	91.8	107.2	93.3

activity at pH 8.5, 8.5, and 8.0 respectively. The purified enzyme of OC-3A strain retained enzymatic activity over pH 9 at which that of the other 2 strains lost their activities rapidly. The optimal temperatures for the proteinases were 60°C for OC-3A and 55°C for KA/E2 and Neff. The purified enzyme of OC-3A strain showed more stable activity than that of KA/E2 and Neff at high pH and high temperature.

Effect of inhibitors and activators

As shown in Table 2, the enzyme activities of purified proteinase of OC-3A, KA/E2 and Neff were almost completely inhibited by serine proteinase inhibitors, PMSF and DFP. The other inhibitors or activators for cysteine, aspartic, or metallo classes had no effect on the enzyme activity.

Substrate specificity

The purified enzyme of 3 strains degraded type IV collagen, the main components of extracellular matrix (Fig. 4) as well as type I collagen and fibronectin (data not shown). Alpha and beta subunits of type IV collagen were fragmented into small pieces within a min. The purified enzymes also degraded host serum proteins such as fibrinogen, hemoglobin, and albumin (Fig. 5). The enzyme of OC-3A strain degraded all subunits of fibrinogen within a minute. However, gamma subunit of fibrinogen was not completely

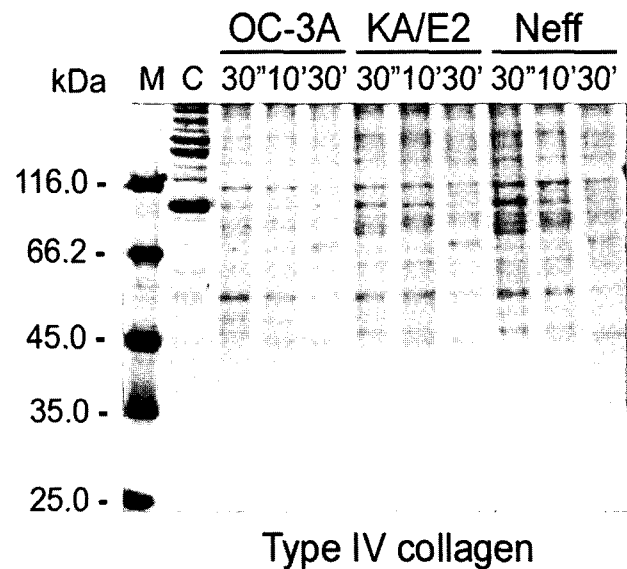


Fig. 4. Proteolytic activity of the purified 33 kDa serine proteinase of *Acanthamoeba* strains, OC-3A, KA/E2 and Neff against extracellular matrix proteins. M, standard size marker; C, reaction mixture without enzyme; Reaction mixtures for each strain were incubated for 30", 10', 30'.

digested by the enzyme of KA/E2 and Neff strain. The enzymes of KA/E2 and Neff strains needed longer time to degrade albumin than that of OC-3A.

In the case of immunoglobulins, the enzyme of OC-3A showed strongest activity against human IgG and IgA (Fig. 6). The light chain of IgG was more resistant to the enzymes than that of heavy chain. IgA was

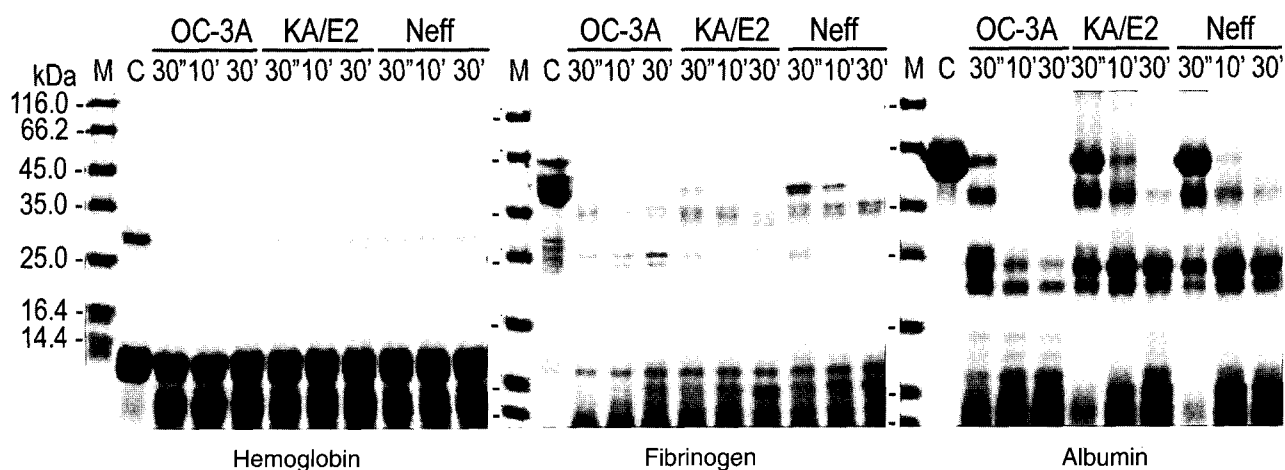


Fig. 5. Proteolytic activity of the purified 33 kDa serine proteinase of *Acanthamoeba* strains, OC-3A, KA/E2 and Neff against host serum proteins. M, standard marker; C, reaction mixture without enzyme; Reaction mixtures for each strain were incubated for 30'', 10', 30'.

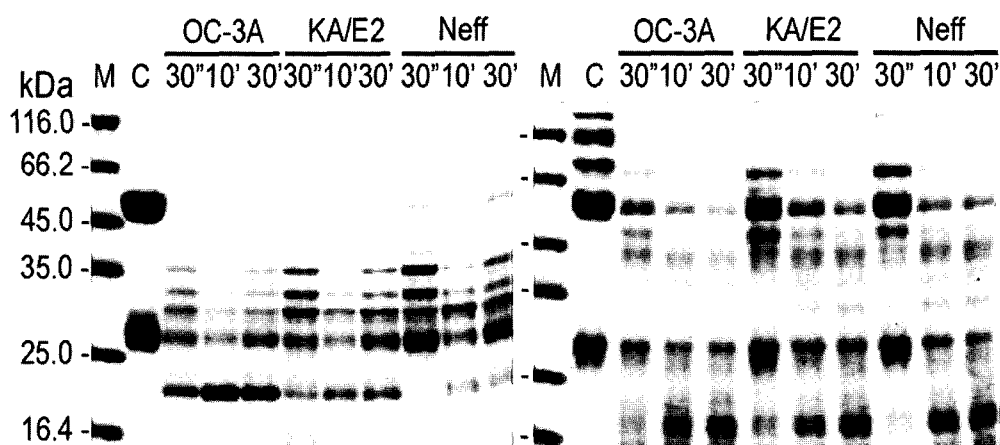


Fig. 6. Proteolytic activity of the purified 33 kDa serine proteinase of *Acanthamoeba* strains, OC-3A, KA/E2 and Neff against immunoglobulins. M, standard marker; C, reaction mixture without enzyme; Reaction mixtures for each strain were incubated for 30'', 10', 30'.

hardly degraded by the purified enzymes of the three strains compared to the other substrates. The enzymes of KA/E2 and Neff strains needed longer time to degrade any substrate than that of OC-3A.

Gelatine zymogram of the purified enzymes

Coomassie Blue stained acryl amide gel copolymerized with gelatin showed clear zones around 3 holes where purified enzyme was loaded. The enzyme of OC-3A strain showed the biggest clear zone while that of KA/E2 and Neff strain revealed quite similar results. PMSF-treated purified enzyme made little or

no clear zone around the hole in all cases (Fig. 7).

CPE of the purified enzymes

When the purified serine proteinases of the 3 strains, OC-3A, KA/E2 and Neff, were added to the HCE cell monolayer, 1 μ g of the enzyme of OC-3A strain was enough to lyse target cells (Fig. 8). In the case of KA/E2, HCE cells were almost completely lysed with 2 μ g of the purified enzyme. HCE cells were completely lysed upon the addition of 10 μ g of any purified enzyme from the 3 strains.

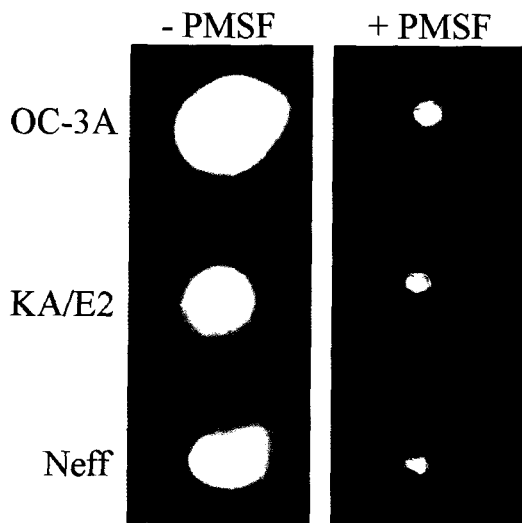


Fig. 7. Gelatin zymogram of the purified enzyme of *Acanthamoeba* strains, OC-3A, KA/E2 and Neff. Acrylamide gel copolymerized with gelatin was stained with Commassie blue after incubation with the purified serine proteinase loaded in the hole of the gel.

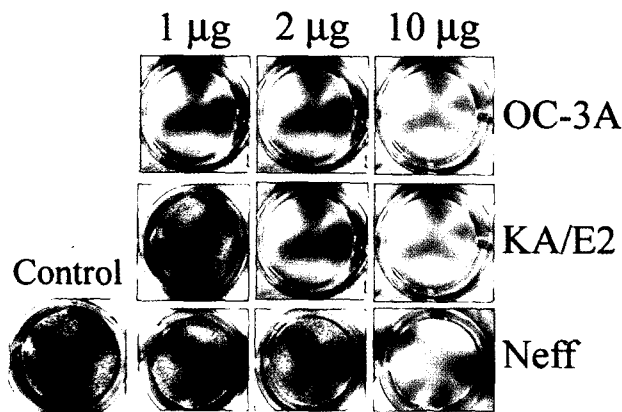


Fig. 8. Cytopathic effects of the purified 33 kDa enzymes of *Acanthamoeba* strains, OC-3A, KA/E2 and Neff on HCE cell. Cytopathy was determined by staining the culture plate with Giemsa after incubation with the purified enzyme.

Inhibition of proteinase activity by antibody against 33 kDa serine proteinase

Anti-serum of immunizing SD rats with the purified recombinant 33 kDa serine proteinase inhibited almost completely the proteinase activity of culture supernatant in three strains. Two microliter of 20 fold diluted anti-serum was enough to diminish proteinase activity of same amount of culture supernatant. In the

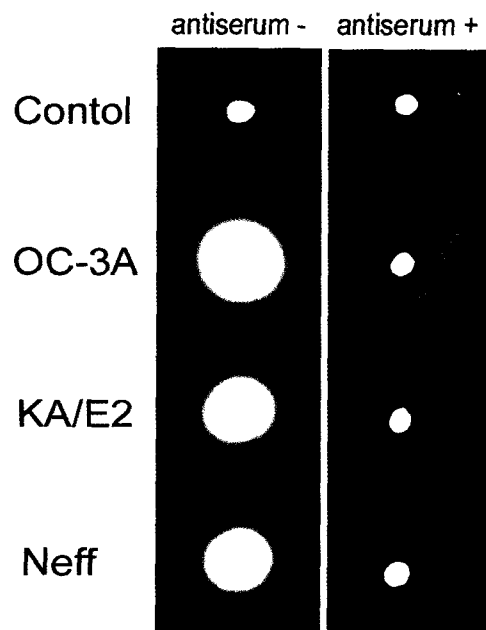


Fig. 9. Gelatin zymogram of culture supernatant of *Acanthamoeba* strains, OC-3A, KA/E2 and Neff. Acrylamide gel copolymerized with gelatin was stained with Commassie blue after incubation with anti-serum against purified 33 kDa serine proteinase or without anti-serum.

case of *A. healyi* OC-3A strain, partial clear zone was observed around the hole (Fig. 9).

DISCUSSION

The mechanisms associated with the pathogenesis of *Acanthamoeba* infections are believed to be highly complex and mechanisms and virulence factors have yet to be clarified. Kahn (2003) classified the pathogenetic mechanisms into contact-dependent and contact-independent ones. Contact-dependent mechanism includes adhesion, apoptosis, and phagocytosis, while extracellular proteases belong to contact-independent one. In this study, contact-dependent mechanisms such as adhesion and phagocytosis proved minor factors for the cytopathy against corneal epithelial cells because 0.1 mM PMSF, one of the serine proteinase inhibitor, reduced the CPE of *Acanthamoeba* trophozoites remarkably. PMSF of 0.1 mM concentration may not be recognized to affect significantly the contact-dependent cytopathic mechanisms. Further-

more, by adding 0.1 mM PMSF, the CPE of 3 *Acanthamoeba* strains with different degree of virulence came to be equal level. This indicates that the difference in virulence and cytopathy have may originated mainly from PMSF susceptible serine proteinases as suggested by previous studies (Leher et al., 1998; Alfrey et al., 2000; Kong et al., 2000; Kim et al., 2003).

Many serine proteinases with different molecular size had been reported in *Acanthamoeba* (Mitra et al., 1995; Cho et al., 2000; Kong et al., 2000; Na et al., 2001; Hurt et al., 2003). Among them, Kong et al. (2000) proposed that a 33 kDa serine proteinase from culture supernatant may play a critical role in pathogenesis of GAE by *A. healyi* because of the strong activity of the enzyme against main components of extracellular matrix and serum proteins. Hong et al. (2000) isolated a cDNA encoding 33 kDa serine proteinase from an *A. healyi* cDNA library and reported that the proteinase belonged to the subtilisin family. Furthermore, the gene was expressed at higher level in highly-virulent strain (OC-3A) than the low-virulent (KA/E2) or environmental isolate (KA/S8). This study revealed that the specific activity of purified 33 kDa serine proteinase from a high virulent strain (OC-3A) was 1.5 times more potent than those from a low virulent (KA/E2) and an environmental isolate (Neff). The origin of difference in specific activity remains unclear and may be a subject for further study.

The cytopathy of purified serine proteinase was profoundly different from strain to strain. Only 1 μ g of the proteinase from OC-3A was enough for complete lysis of corneal epithelial cells after 24 hr whereas 10 μ g of the enzyme from Neff and 2 μ g from KA/E2 were needed. This result coincides with the ability of *Acanthamoeba* trophozoite to produce CPE. Trophozoites of OC-3A strain showed the strongest cytopathy to HCE cell, followed by KA/E2, and lastly Neff strain exhibiting the weakest cytopathy. The correlation of cytopathy by the purified proteinase and trophozoites indicated that the proteinase activity is the main factor for cytopathy in *Acanthamoeba* infection.

The proteolytic effects of the enzymes against various ECM and serum protein were not strikingly dif-

ferent. The purified proteinases showed potent proteolytic activity especially against type I and IV collagens, the main component of corneal stroma and basement membrane respectively. This indicates that the proteinase may play a key role in corneal tissue destruction in AK and spread of amoeba in GAE. Immunoglobulins were found relatively resistant compared with ECM proteins. However, Immunoglobulin alone can hardly be regarded as effective defence mechanism against *Acanthamoeba* infection. As a matter of fact, healthy persons who secrete anti-acanthamoebic IgA in their tears can be victims of AK.

Although present study revealed that cytopathy of HCE cells by *Acanthamoeba* is dependent mainly on the secretory proteinase, pathogenesis of AK and GAE may need other factors and mechanisms in addition to the cytopathy. There has been reported the coordination of contact-dependent mechanism and contact-independent mechanism. Adhesion of *Acanthamoeba* to corneal epithelial cells by mannose-binding protein resulted in increased secretion of proteases (Cao et al., 1998; Hurt et al., 2003; Khan, 2003). The relation between those two components for pathogenesis and the mediating pathway would be the subject for further research.

Due to reports on the important role of proteinases in the pathogenesis of *Acanthamoeba* infection, the possibility of proteinase as a target for development of therapeutic agent was considered by investigators (Khan, 2003). Considering the result of this study, treatment with proteinase inhibitors for the serine proteinase as eye drop could be a promising way to delay the pathogenesis of keratitis by *Acanthamoeba*. Up to date, it usually takes long time to cure and results in bad outcome in AK because of absence of specific drug for *Acanthamoeba*. Therefore, prevention of lysis of corneal epithelial cells and degradation of stromal collagens by proteinase inhibitors may delay the process of AK.

In conclusion, PMSF susceptible proteinase activity was revealed as the main component to cause cytopathy in HCE cells by *Acanthamoeba*. The purified 33 kDa serine proteinase showed strong activity toward HCE cell and extracellular matrix proteins. Among the 3

Acanthamoeba strains, the most virulent strain, OC-3A exhibited the highest level of enzyme activity in comparison with KA/E2, ocular isolate, and Neff strain, a soil isolate.

REFERENCES

- Alfieri SC, Correia CE, Motegi SA, Pral EM (2000) Proteinase activities in total extracts and in medium conditioned by *Acanthamoeba polyphaga* trophozoites. *J Parasitol* **86**: 220-227.
- Bradford MM (1976) A rapid and sensitive method for the quantitation of microgram quantities of protein utilizing the principle of protein-dye binding. *Anal Biochem* **72**: 248-254.
- Cao Z, Jefferson DM, Panjwani N (1998) Role of carbohydrate-mediated adherence in cytopathogenic mechanisms of *Acanthamoeba*. *J Biol Chem* **273**: 15838-15845.
- Cho JH, Na BK, Kim TS, Song CY (2000) Purification and characterization of an extracellular serine proteinase from *Acanthamoeba castellanii*. *IUBMB Life* **50**: 209-214.
- Garate M, Cao Z, Bateman E, Panjwani N (2004) Cloning and characterization of a novel mannose-binding protein of *Acanthamoeba*. *J Biol Chem* **279**: 29849-29856.
- Hong YC, Kong HH, Ock MS, Kim IS, Chung DI (2000) Isolation and characterization of a cDNA encoding a subtilisin-like serine proteinase (AhSUB) from *Acanthamoeba healyi*. *Mol Biochem Parasitol* **111**: 441-446.
- Hong YC, Lee WM, Kong HH, Jeong HJ, Chung DI (2004) Molecular cloning and characterization of a cDNA encoding a laminin-binding protein (AhLBP) from *Acanthamoeba healyi*. *Exp Parasitol* **106**: 95-102.
- Hurt M, Niederkorn J, Alizadeh H (2003) Effects of mannose on *Acanthamoeba castellanii* proliferation and cytolytic ability to corneal epithelial cells. *Invest Ophthalmol Vis Sci* **44**: 3424-3431.
- Khan NA (2003) Pathogenesis of *Acanthamoeba* infections. *Microb Pathog* **34**: 277-285.
- Kim HK, Ha YR, Yu HS, Kong HH, Chung DI (2003) Purification and characterization of a 33 kDa serine protease from *Acanthamoeba lugdunensis* KA/E2 isolated from a Korean keratitis patient. *Korean J Parasitol* **41**: 189-196.
- Kong HH, Kim TH, Chung DI (2000) Purification and characterization of a secretory serine proteinase of *Acanthamoeba healyi* isolated from GAE. *J Parasitol* **86**: 12-17.
- Leher H, Silvany R, Alizadeh H, Huang J, Niederkorn JY (1998) Mannose induces the release of cytopathic factors from *Acanthamoeba castellanii*. *Infect Immun* **66**: 5-10.
- Marciano-Cabral F, Puffenbarger R, Cabral GA (2000) The increasing importance of *Acanthamoeba* infections. *J Eukaryot Microbiol* **47**: 29-36.
- Marciano-Cabral F, Cabral G (2003) *Acanthamoeba* spp. as agents of disease in humans. *Clin Microbiol Rev* **16**: 273-307.
- Mckerrow JH, Sun E, Rosenthal PJ, Bouvier J (1993) The proteases and pathogenicity of parasitic protozoa. *Annu Rev Microbiol* **47**: 821-853.
- Mitra MM, Alizadeh H, Gerard RD, Niederkorn JY (1995) Characterization of a plasminogen activator produced by *Acanthamoeba castellanii*. *Mol Biochem Parasitol* **73**: 157-164.
- Moura H, Wallace S, Visvesvara GS (1992) *Acanthamoeba healyi* n. sp. and the isoenzyme and immunoblot profiles of *Acanthamoeba* spp., groups 1 and 3. *J Protozool* **39**: 573-583.
- Na BK, Kim JC, Song CY (2001) Characterization and pathogenic role of proteinase from *Acanthamoeba castellanii*. *Microb Pathog* **30**: 39-48.
- Schuster FL, Visvesvara GS (2004) Free-living amoebae as opportunistic and non-opportunistic pathogens of humans and animals. *Int J Parasitol* **34**: 1001-1027.
- Yu HS, Kong HH, Kim SY, Hahn YH, Hahn TW, Chung DI (2004) Laboratory investigation of *Acanthamoeba lugdunensis* from patients with keratitis. *Invest Ophthalmol Vis Sci* **45**: 1418-1426.