

[초청강연]

학 술 발 표

차세대 컴퓨팅 패러다임 SOA

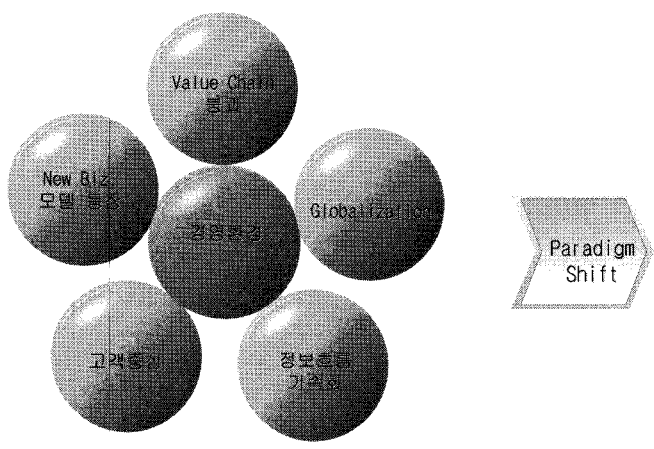
- IBM 장연세 -

I.N.D.E.X

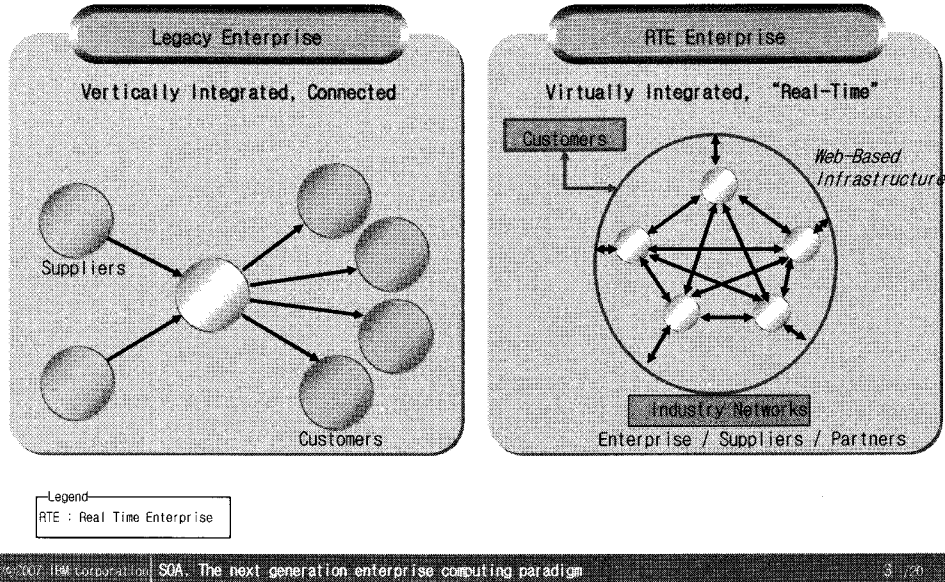
- 1 Overview
- 2 Service Oriented Architecture

- 1. Overview
 - 1.1 Business Operation Environments
 - 1.2 Innovation of Enterprise Model
 - 1.3 Real Time Enterprise
 - 1.4 3 Keys for RTE
 - 1.5 RTE System Map

1.1 Business Operation Environments



1.2 Innovation of Enterprise Model



1.3 Real Time Enterprise

최신 정보를 기초로, 핵심적인 프로세스의 관리 및 실행에 있어서, 지체 현상을 지속적으로 제거함으로써 경쟁력을 극대화하는 경영 체제 - Gartner



1.4 3 Keys for RTE



1

- Keyword : 최신정보 (Up-to-date Information)
- Reason : Global(Virtual Enterprise)화에 따른 정보 통합
Transparent Management를 위한 실시간 정보 공유
- Example : 표준화, Web Services, EAI/B2Bi, Mobile(RFID etc...)

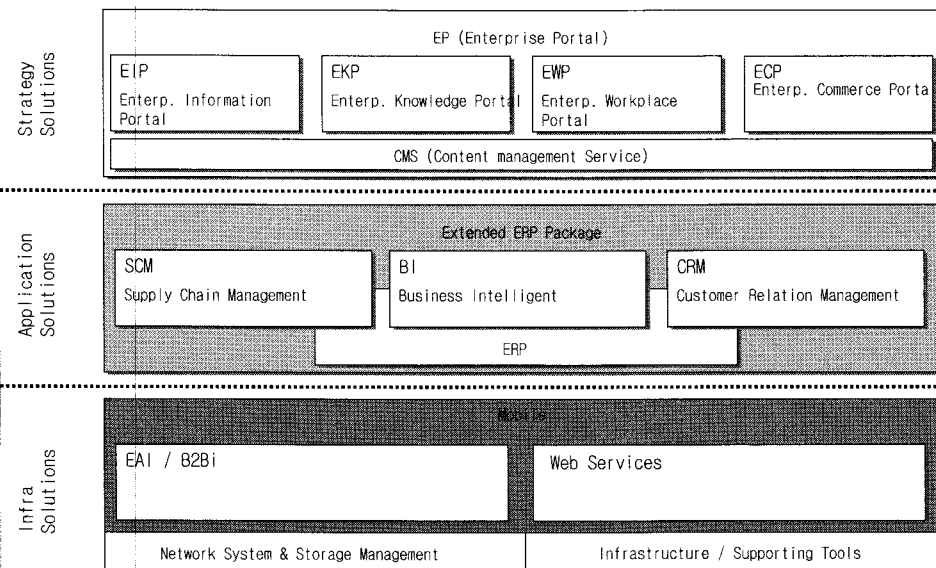
2

- Keyword : 핵심 프로세스 (Critical Business Process)
- Reason : 기업내 모든 프로세스가 업계 최고일 필요는 없음
핵심적이고 차별적인 프로세스를 대상으로 선정
- Example : 제조업(SCI), 통신업(CRM, Billing), 금융업(CRM, RM)

3

- Keyword : 관리 및 실행 (Management and Execution)
- Reason : 운영(실행) 뿐만이 아니라 의사 결정까지 지원
비즈니스 수행 내용 및 결과에 대한 분석/예측
- Example : SEM, BSC, ABC, DW, BPM, EP, Dash Board

1.5 RTE System Map



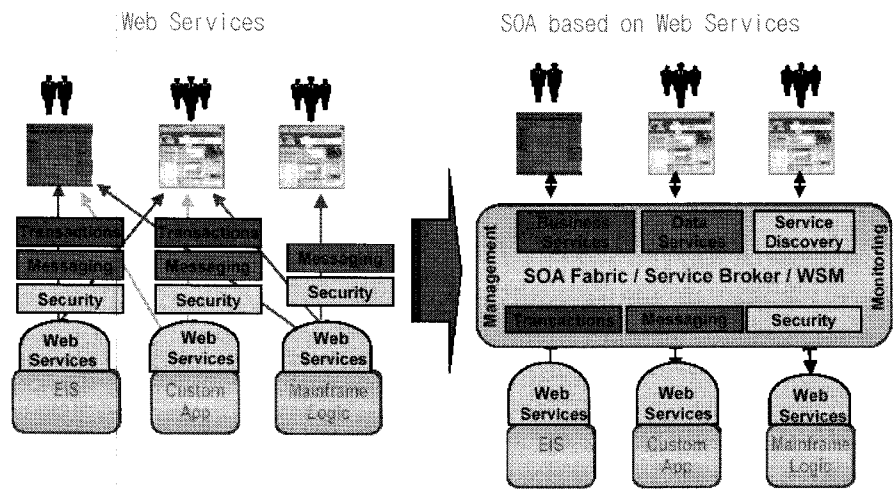
07 컴퓨터정보학회 동계 학술대회		IBM Global Business Service	
I.N.D.E.X			
1	Overview	2.	Service Oriented Architecture
2	Service Oriented Architecture	2.1	SOA is
		2.2	SOA .vs. Web service
		2.3	SOA based on Web Services
		2.4	Type of Services
		2.5	Conceptual SOA Model
		2.6	R&R in a Web Services Architecture
		2.7	Web Services Architecture
		2.8	Services Discovery Process
		2.9	ESB
		2.10	ESB for SOA
		2.11	SOA Maturity Model
		2.12	SOA Reference Model
		2.13	SOA Architecture Layer
© 2007 IBM Corporation SOA, The next generation enterprise computing paradigm		7 / 50	

07 컴퓨터정보학회 동계 학술대회		IBM Global Business Service	
2.1 SOA is			
<p>? “Services Oriented Architecture is a client/server software design approach in which an application consists of software services and software service consumers (also known as clients or service requesters). “</p> <p style="text-align: center;">Gartner</p>			
<p>? “SO(Service Oriented) is the provision, consumption and life cycle management of business and technical services which are self describing and loosely coupled, implemented in a technology neutral manner.”</p>			
<pre> graph LR SC[Service Consumer Client] -- Find --> SB[Service Broker] SB -- Interact --> SP[Service Provider] SP -- Publish --> SC[Service Contract] SC -.-> SP SC -.-> SC </pre>			
© 2007 IBM Corporation SOA, The next generation enterprise computing paradigm		8 / 50	

2.2 SOA .vs. Web services

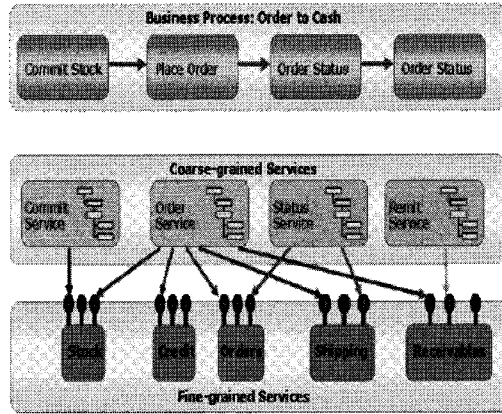
- ? SOA does not require Web Services for implementation and Web Services deployment does not result in a SOA.
- ? Web Services are a good example of a service, and a component not a necessary component) of an enterprise SOA.
- ? Web Services provide standards based technology to implement SOA in a cost-effective manner using communication methods available everywhere today.

2.3 SOA based on Web Services

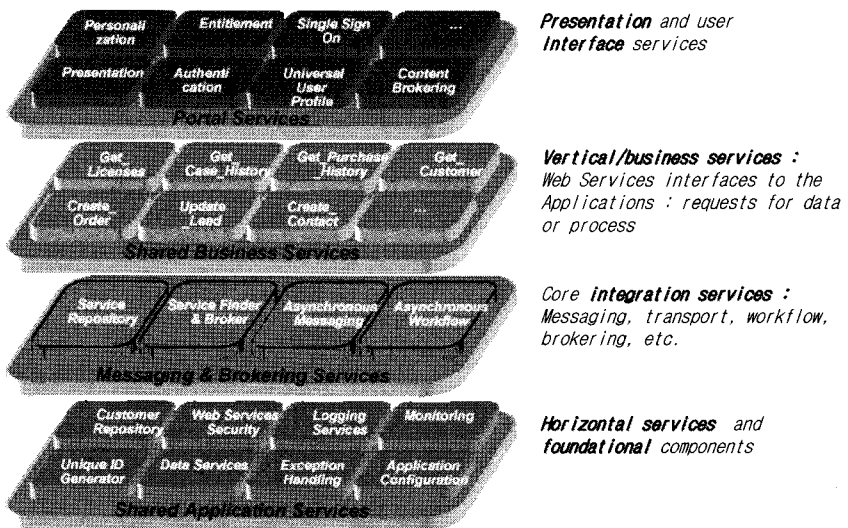


2.4 Type of Services

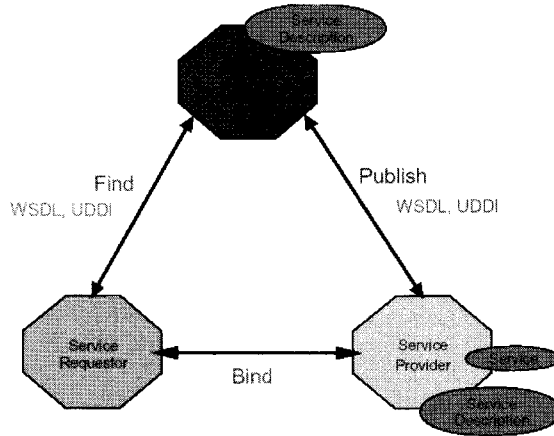
- ? Data Access
- ? Business Services
- ? Composite Applications
- ? Common or Infrastructure Services



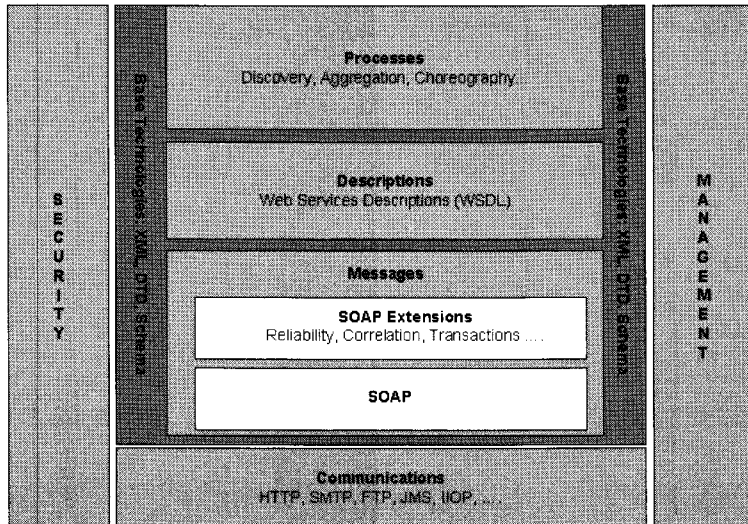
2.5 Conceptual SOA Model

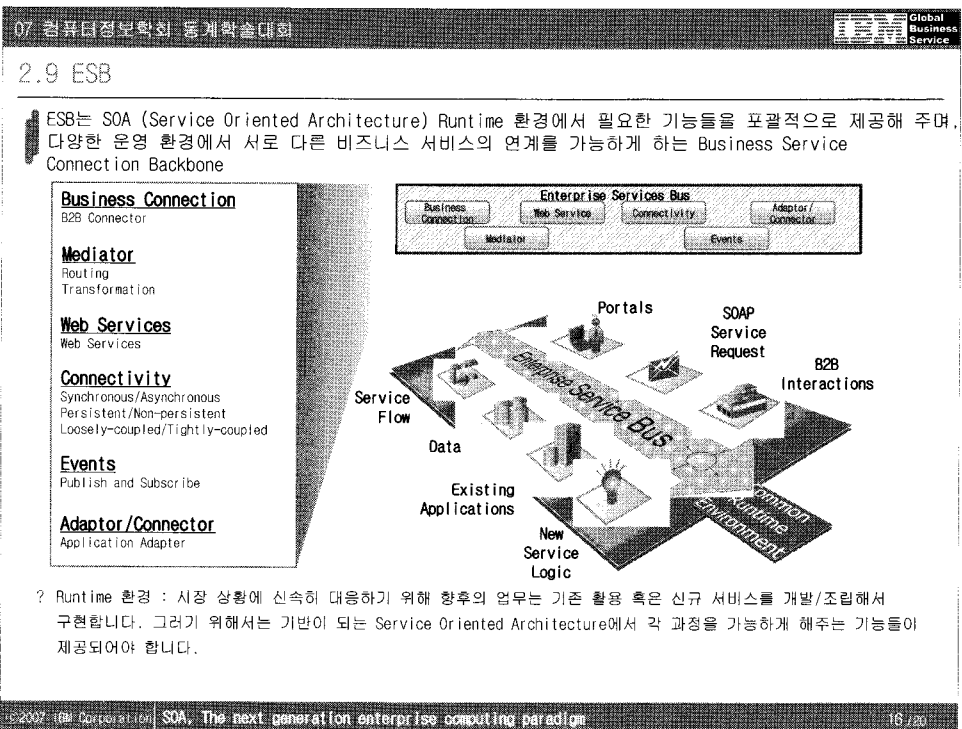
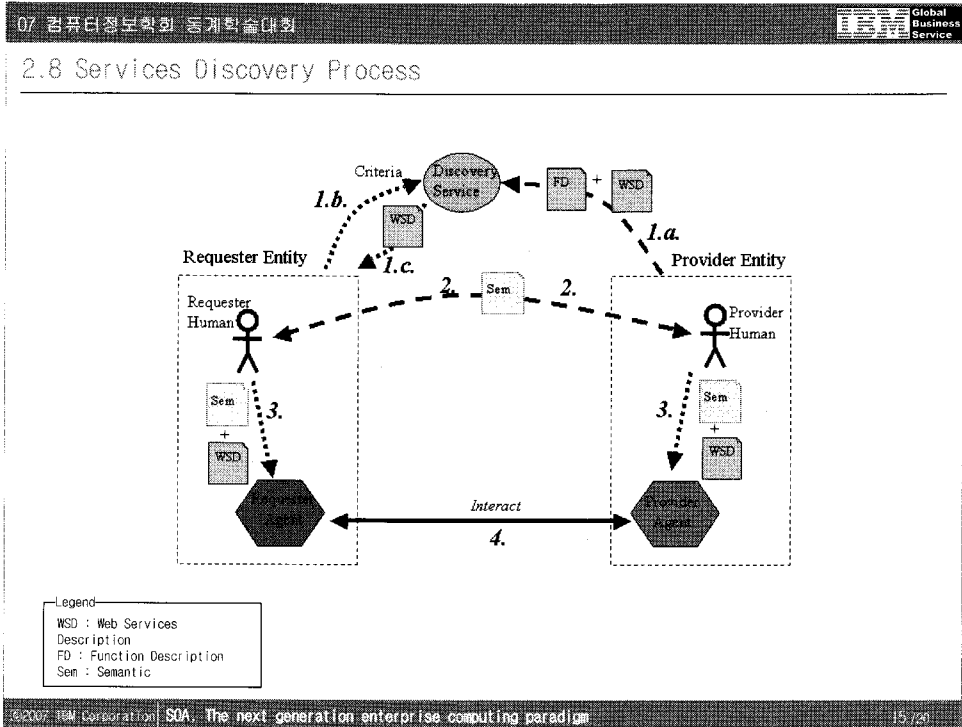


2.6 R&R in a Web Services Architecture

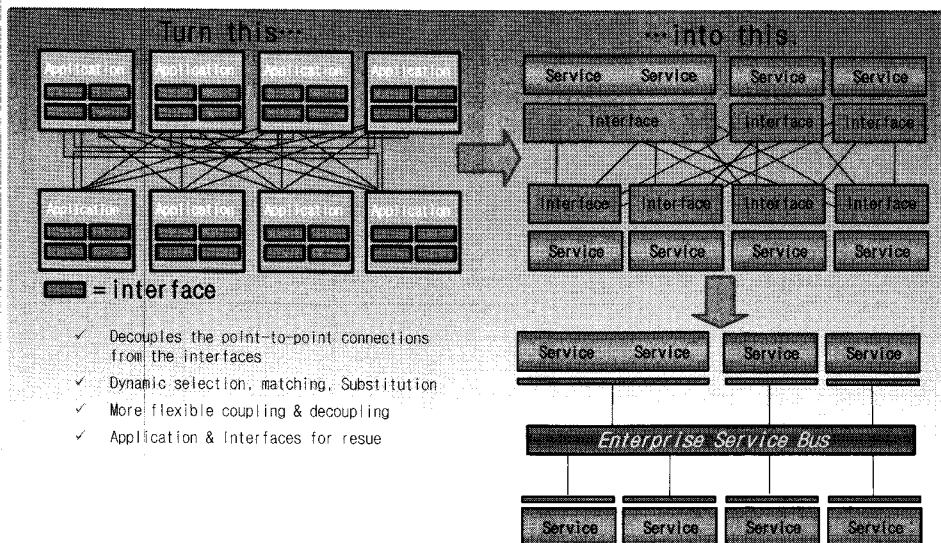


2.7 Web Services Architecture



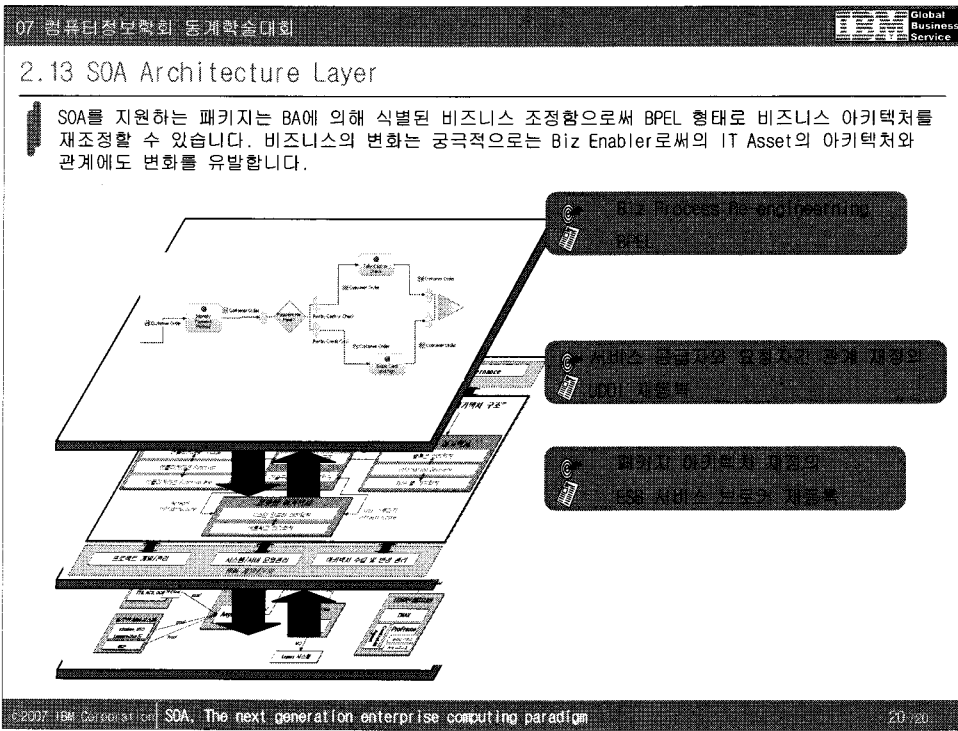
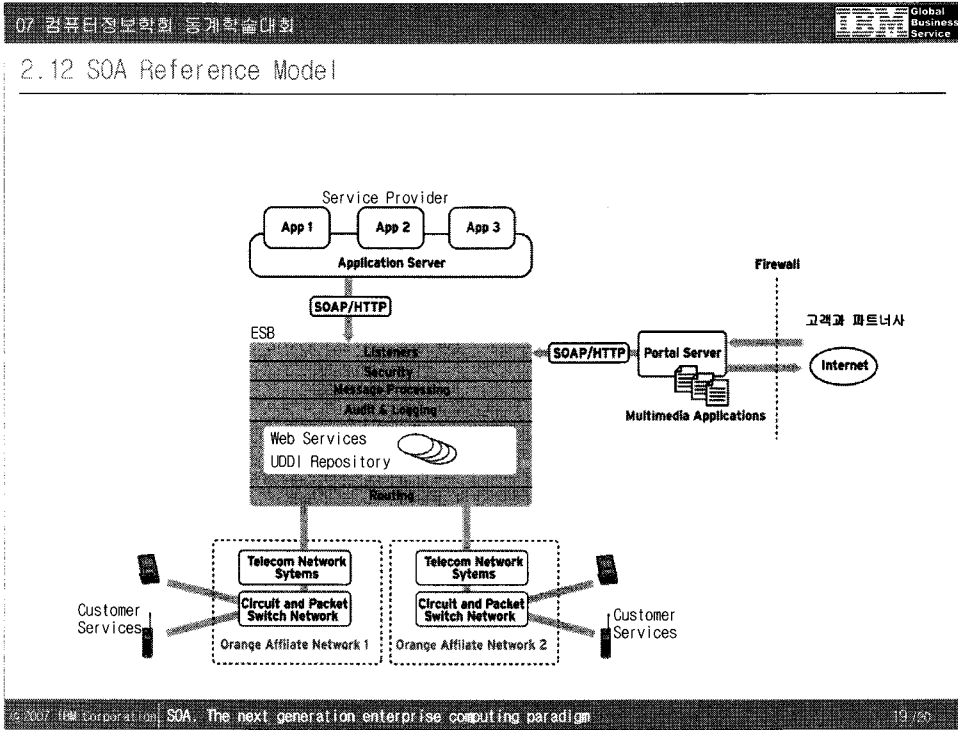


2.10 ESB for SOA




2.11 SOA Maturity Model

Level 1	Level 2	Level 3	Level 4	Level 5	Level 6	Level 7
Site	Integrated	Componentized	Services	Composite Services	Virtualized Services	Dynamically Re-Configurable Services
Function Oriented	Function Oriented	Function Oriented	Service Oriented	Service Oriented	Service Oriented	Service Oriented
Ad hoc IT Governance	Ad hoc IT Governance	Ad hoc IT Governance	Emerging SOA Governance	SOA and IT Governance Alignment	SOA and IT Governance Alignment	SOA and IT Governance Alignment
Structured Analysis & Design	Object Oriented Modeling	Component Based Development	Service Oriented Modeling	Service Oriented Modeling	Service Oriented Modeling	Service Oriented Modeling
Modules	Objects	Components	Services	Process Integration via Services	Process Integration via Services	Dynamic Application Assembly
Monolithic Architecture	Layered Architecture	Component Architecture	Emerging SOA	SOA	Grid Enabled SOA	Dynamically Re-Configurable Architecture
Platform Specific	Platform Specific	Platform Specific	Platform Specific	Platform Specific	Platform Neutral	Dynamic Sense & Respond



07 컴퓨터정보학회 동계학술대회

IBM Global Business Service



Thank You

© 2007 IBM Corporation SOA. The next generation enterprise computing paradigm