

STRESS DISTRIBUTION OF ENDODONTICALLY TREATED MAXILLARY SECOND PREMOLARS RESTORED WITH DIFFERENT METHODS: THREE-DIMENSIONAL FINITE ELEMENT ANALYSIS

Dong-Yeol Lim¹, Hyeon-Cheol Kim¹, Bock Hur¹, Kwang-Hoon Kim², Kwon Son², Jeong-Kil Park^{*}

¹Department of Conservative dentistry, School of Dentistry, Pusan National University

²Department of Mechanical design engineering, College of Engineering, Pusan National University

ABSTRACT

The purpose of this study was to evaluate the influence of elastic modulus of restorative materials and the number of interfaces of post and core systems on the stress distribution of three differently restored endodontically treated maxillary second premolars using 3D FE analysis. Model 1, 2 was restored with a stainless steel or glass fiber post and direct composite resin. A PFG or a sintered alumina crown was considered. Model 3 was restored by EndoCrown. An oblique 500 N was applied on the buccal (Load A) and palatal (Load B) cusp. The von Mises stresses in the coronal and root structure of each model were analyzed using ANSYS. The elastic modulus of the definitive restorations rather than the type of post and core system was the primary factor that influenced the stress distribution of endodontically treated maxillary premolars. The stress concentration at the coronal structure could be lowered through the use of definitive restoration of high elastic modulus. The stress concentration at the root structure could be lowered through the use of definitive restoration of low elastic modulus. (J Kor Acad Cons Dent 34(1):69-80, 2009)

Keywords: EndoCrown, Elastic modulus, Finite element analysis, Stress distribution, Maxillary premolar
- Received 2008.12.1., revised 2009.1.7., accepted 2009.1.9-

I . Introduction

Endodontically treated teeth often lose substantial tooth structure from previous caries, pre-existing restorations, and/or endodontic procedures¹⁾. The amount of sound tooth structure that will remain following root canal therapy and any subsequent preparation is an important factor in planning the restoration of endodontically treated tooth²⁾. Clinically, the necessity of placing a post arises when too insufficient crown structure is present to sustain a coronal restoration.

Cast posts and cores are commonly used for teeth with little remaining coronal structure or for unradicular teeth with small coronal volume because of

their superior physical properties^{3,4)}. Cast gold alloy is an inert material with elastic modulus and coefficient of thermal expansion similar to those of enamel, and yet it has good compressive strength that can withstand normal occlusal forces⁵⁾. But their hardness might be a major disadvantage in adjustment and may predispose the tooth to root fracture. Another disadvantage of the cast post and core placement procedure is that it requires two visits and laboratory fabrication.

Prefabricated metal posts allow fast, cheap, easy and simple techniques, but they do not take into account the individual shape of the root canal and their adaptation is not always ideal^{6,7)}. Restoration of endodontically treated teeth can include a definitive restoration, core, post, cement, and the tooth structure with potential interfaces of component-to-component.

So stress concentrations at the interface between the metal post and resin core and the reconstructed crown may cause cracks and crown detachment

**Corresponding Author : Jeong-Kil Park*
Department of Conservative Dentistry
School of Dentistry, Pusan National University
1-10, Ami-dong, Seo-gu, 602-739, Busan, Korea
Tel: 051-240-7454

because of the significant strain gradient caused by the large difference in stiffness between crown material, post and core⁷⁾. As the number of interfaces increases, the potential for failure will also increase⁸⁾.

Recently, fiber reinforced composite (FRC) posts can be used in high-demand cosmetic procedures, such as with all-ceramic and indirect resin restorations. The use of fiber posts appears to be a good restorative choice to rebuild endodontically treated teeth. Their elastic modulus is claimed to be close to that of dentin. Although this feature could reduce the risk of root fractures, their flexibility is generally greater than that of metal posts, and a flexible post may not be effective in stabilizing the composite core in teeth without their remaining crown⁹⁾.

Compared with various post and core systems, the ideal post and core material should have physical properties—such as elastic modulus, compressive strength and coefficient of thermal expansion—that are similar to those of dentin. And the creation of a mono-block dentin-post-core system through the dentinal bonding would allow better distribution of forces along the root. Therefore if excessive loads are applied to the tooth, the post will be able to absorb stresses, reducing the possibility of root fracture.

A completely different approach recommends the use of so-called EndoCrown instead of posts and cores. An EndoCrown is a full or compact crown that extends a post into the pulp chamber or root canals as one unit and not a separate post¹⁰⁾. The development of indirect resin with elastic modulus closer to dentin and luting agents with lower elastic moduli has been suggested to reduce the tension that can develop at the tooth/cement/restorative material interface¹¹⁾. Since any significant mismatch between stiffness of intraradicular devices and dental tissues will cause large stress concentration at the restorative materials and tooth interfaces, the best solution appears to be the use of customized post systems made of materials whose elastic properties are very close to those of the natural tooth. EndoCrown fabricated with indirect composite resins seem to be the most reliable restoration, because the EndoCrown configuration significantly reduces the number of interfaces and dentin like elastic modulus generates

low amounts of stress concentration¹²⁾.

Mechanical response of dental posts can be experimentally investigated by suitable tests under various loading conditions. On the other hand, more detailed information about the stress distribution surrounding endodontic posts can be evaluated by photoelastic analysis, strain gauge, speckle interferometry or by numerical simulations with finite element (FE) analysis, as proposed by a number of authors¹³⁻¹⁶⁾ which also provides stress distribution inside the post. The FE method is based on a mathematical model which approximates the geometry and the loading conditions of the structure (i.e. a pulpless tooth reconstructed with an endodontic post) to be analyzed. Deformations and stresses in any point of the model can be evaluated and the most stressed areas can thus be evidenced.

The purpose of this study was to evaluate the influence of elastic modulus of restorative materials and the number of interfaces of post and core systems on the stress distribution of three differently restored endodontically treated maxillary second premolars using three-dimensional (3D) FE analysis.

II . Materials and Methods

1. Finite element models

To develop a 3D FE model, intact normal extracted human maxillary second premolars were used. The extracted premolars were scanned serially with micro-CT (SkyScan1072; SkyScan, Aartselaar, Belgium) to expose the tooth sections perpendicular to the long axis of the tooth (58 μm in thickness) and parallel to the occlusal plane. 3D-DOCTOR (Able Software Co., Lexington, MA, USA) image processing software was employed to detect the boundaries of enamel, dentin and pulp from the sectioned two dimensional images and to make 3D surface model. HyperMesh Ver. 6 (Altair Engineering, Inc., Troy, USA) and ANSYS Ver. 9 (Swanson Analysis Systems, Inc., Houston, USA) were used to mesh and analyze 3D FE model.

The physical properties of the tooth and supporting structures used in this study are given in Table 1. All the vital tissues were presumed linearly elastic,

homogeneous and isotropic. The corresponding elastic properties such as Young's modulus and Poisson's ratio were determined according to literature survey^{10,15-18}.

Table 1. List of elastic constants of investigated materials

Materials	Elastic Modulus (GPa)	Poisson's Ratio (ν)
Dentin	18.6	0.31
Ligament	0.0689	0.45
Cortical bone	13.7	0.3
Trabecular bone	1.37	0.3
Glass fiber post	40	0.26
Stainless steel post	200	0.33
Direct composite resin	12	0.3
Sintered alumina	418	0.22
Au-pd alloy	89.5	0.33
Porcelain	68.9	0.28
Indirect composite resin	14.8	0.3
Resin cement	18.6	0.28

The periodontal ligament was assumed to be 0.3 mm wide, and the alveolar bone was also generated by growing the outer surface of the tooth from 2 mm below the cemento-enamel junction (CEJ). In all loading cases, the mesial, distal and base nodes of simulated alveolar bone were assumed fixed to prevent rigid body motion. Endodontically treated maxillary second premolar which has 2 mm ferrule above CEJ was used as a tooth models (Figure 1-A). Restored structure of models was shown in Figure 1-B.

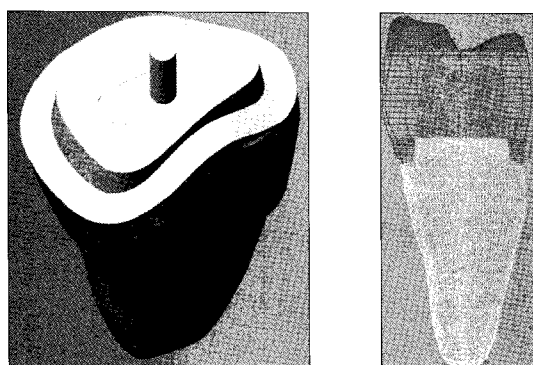


Figure 1. A: Occlusal aspect of prepared endodontically treated maxillary second premolar with remaining tooth structure of 2 mm ferrule at buccal and palatal. B: Proximal view of restored endodontically treated maxillary second premolar (Model 1).

2. Experimental models of different post and core systems and definitive restorations

The three experimental models were designed as follows and summarized at Table 2.

Model 1: It consisted of 426245 elements with 81976 nodes and was restored with a stainless steel post which has 0.9 mm of tip diameter and 8 mm of length from CEJ to post apex. A porcelain-fused to gold (PFG) crown was considered. The amount of tooth preparation and gold coping thickness is excerpted from the text of prosthodontics¹⁹.

Model 2: It consisted of 427563 elements with 82211 nodes and was restored with a glass fiber post which has 0.9 mm of tip diameter and 1.4 mm of coronal diameter. A sintered alumina crown was considered.

Model 3: It consisted of 427563 elements with 82211 nodes, was restored

by EndoCrown which was composed of post, core and crown in all-in-one.

It was assumed that complete bonding between components was considered and the thickness of adhesive resin cement was 0.1 mm.

3. Loading condition and stress analysis

As shown in Figure 2, an oblique 500 N load of 45° direction to the long axis of tooth was applied on the buccal (Load A) and palatal (Load B) cusp¹⁵.

The von Mises stresses in the coronal and root structure of each model were analyzed using ANSYS.

The stress distributions of coronal structure were evaluated at the shoulder margin (SM), lower margin of ferrule (LF), and upper margin of ferrule (UF) as shown in Figure 3.

The stress distributions of root structure was evaluated vertically at the slightly mesiobuccal and distopalatal outer surface from CEJ to the root apex as shown in Figure 4.

Table 2. Characteristics of each model

	Post	Core	Definitive restoration	Cement
Model 1	Stainless steel post	Direct composite resin	PFG	Resin cement
Model 2	Glass fiber post	Direct composite resin	Sintered alumina	Resin cement
Model 3	EndoCrown (Indirect composite resin)			Resin cement

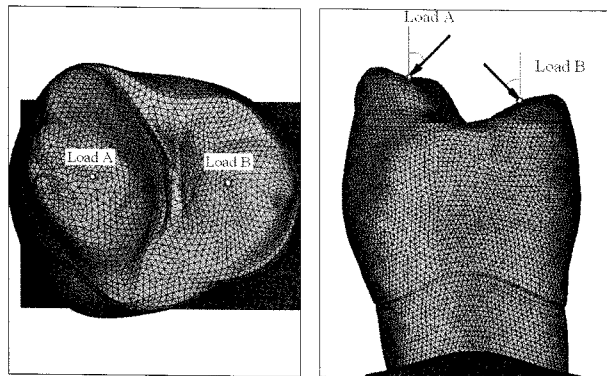


Figure 2. A: Occlusal aspect of loading points.
B: Proximal view of loading directions.

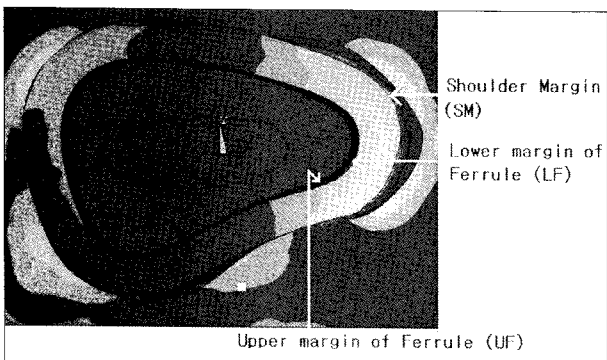


Figure 3. Occlusal aspect of various locations where stresses were analyzed.

III. Results

[Stress analysis of coronal structure]

1. Under the condition of Load A

1-1) External view of stress distribution

The stresses were distributed along the buccal and palatal crown margins. High level of stress was concentrated at mid-palatal crown cervical margin of Model 2 (Figure 5).

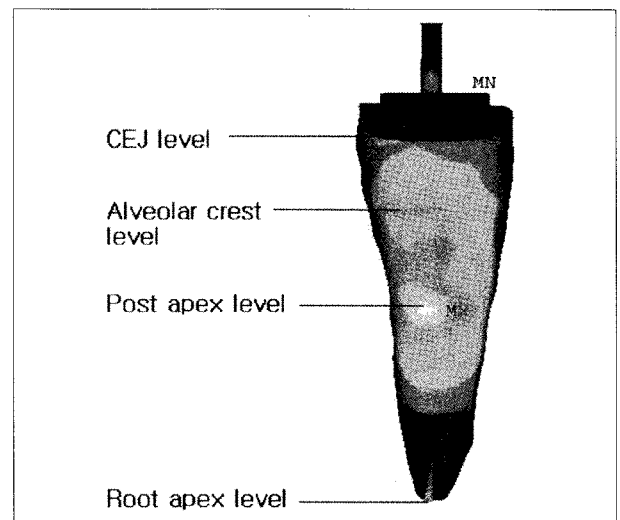


Figure 4. Various locations of root surface where stress were analyzed.

1-2) Internal view of stress distribution

The stresses were distributed along the buccal and palatal shoulder margins. High stress was concentrated at mesio-buccal and mid-palatal shoulder margin of all models. In Model 1 and 2, low level of stress was distributed at ferrule and core. At ferrule and core of Model 3, the stress level was higher than Model 1 and 2 as shown in buccal, palatal and occlusal aspect (Figure 6).

1-3) Peak stresses at SM, LF and UF

The von Mises stresses in SM, LF, and UF were presented at Figure 7. Along the SM, the peak stress of palatal aspect was higher than that of buccal aspect. Along the buccal SM, the peak stress of Model 3 was highest of all and along the palatal SM, the peak stress was highest in Model 1. Along the buccal and palatal LF, the peak stress was highest in Model 2. At UF, Model 3 had highest peak stress among all models.

2. Under the condition of Load B

2-1) External view of stress distribution

The stresses were distributed along the buccal and palatal crown margins. High stress was concentrated at mid-palatal crown cervical margin of Model 2 (Figure 8).

2-2) Internal view of stress distribution

The stresses were distributed along the buccal and palatal shoulder margins. High stress was concentrated at mesio-buccal and mid-palatal shoulder margin of all models.

At ferrule and core of Model 3, the stresses level was higher than Model 1 and 2 as shown in buccal, palatal, occlusal aspect (Figure 9).

2-3) Peak stresses at SM, LF and UF

The von Mises stresses in SM, LF, and UF were presented at Figure 10. Peak stress of Model 3 was highest among the models at buccal SM and at buccal and palatal UF. At the buccal and palatal LF, the peak stress of Model 2 was highest of all.

(Stress analysis of root structure)

1. Under the condition of Load A

1-1) Stress distribution of root surface

Stress distributed along buccal and palatal root area of all models. Peak stress of all models concentrated at middle third area of the root at buccal and palatal aspect (Figure 11).

1-2) Stress analysis of root surface

The von Mises stresses at root surface were presented at Figure 12 and 13. At buccal and palatal root surface, the peak stress of Model 2 was the highest and the peak stress of the Model 3 was the lowest.

2. Under the condition of Load B

2-1) Stress distribution of root surface

Stress distributed along buccal and palatal area of all models. Peak stresses of all models concentrated

at middle third area of the root in buccal and palatal aspect (Figure 14).

2-2) Peak stress of root surface

The von Mises stresses at root surface were presented at Figure 15 and 16. At buccal and palatal root surface, the peak stress of Model 2 was the highest and the peak stress of the Model 3 was the lowest.

IV. Discussion

After root canal treatment, the dental practitioner is faced with the task of restoring the tooth to rehabilitate oral functions. The restoration must achieve adequate retention and circumvent damage to the remaining hard tissue through the prevention of bacterial microleakage and hard tissue fractures.

Many investigators²⁰⁻²⁵⁾ reported that the design as well as the material of the post and core affect the resistance to fracture of endodontically treated teeth restored with post and core systems, while other studies reported that resistance to fracture of endodontically treated teeth covered by a crown with a 2 mm margin on healthy tooth structure was not affected by the post and core complex^{26,27)}.

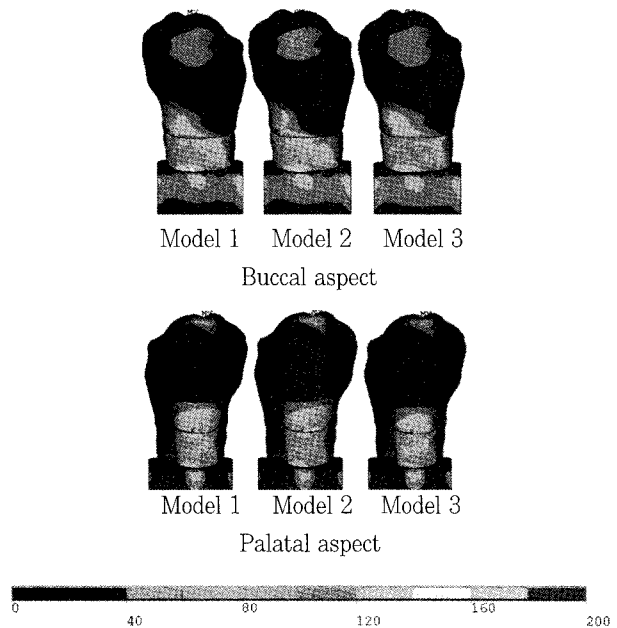


Figure 5. Buccal and palatal aspect of stress distribution at the crown shoulder margin under Load A.

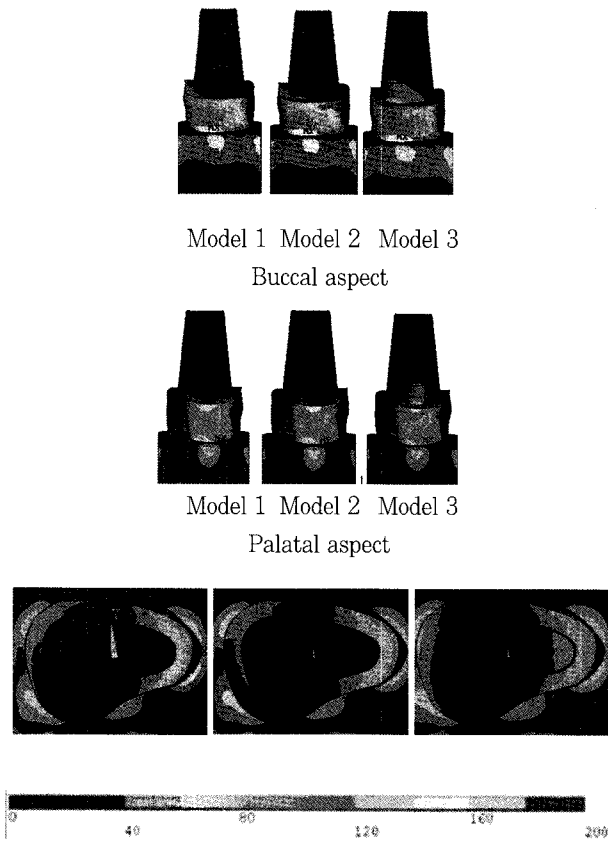


Figure 6. Buccal, palatal and occlusal aspect of stress distribution at the shoulder, ferrule and core under Load A.

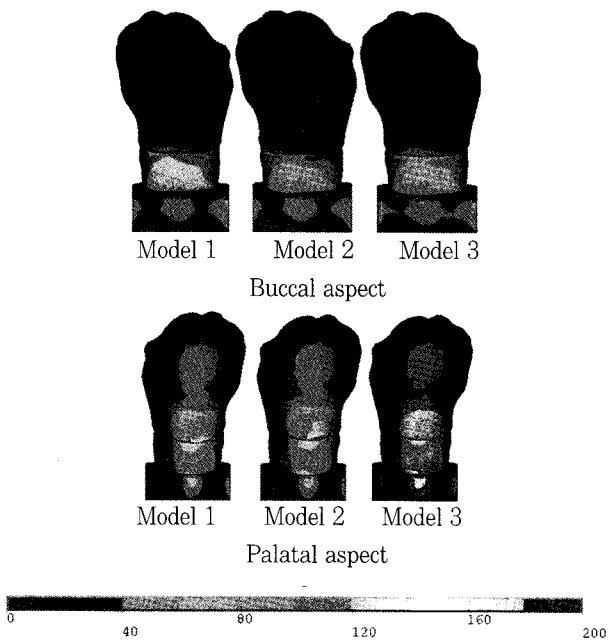


Figure 8. Buccal and palatal aspect of stress distribution at the crown shoulder margin under Load B.

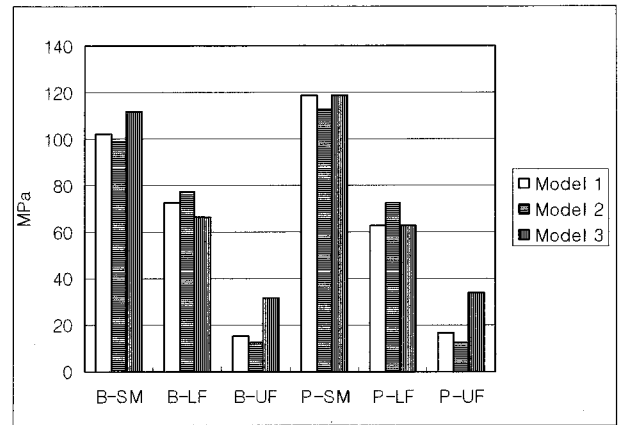


Figure 7. Peak stresses of coronal component under Load A. (B-buccal aspect, P-palatal aspect)

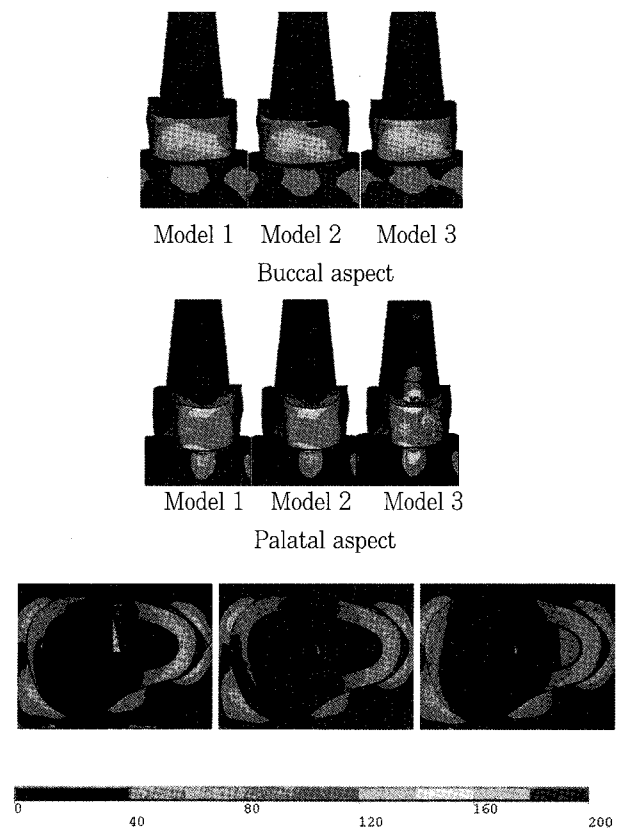


Figure 9. Buccal, palatal and occlusal aspects of stress distribution at the shoulder, ferrule and core under Load B.

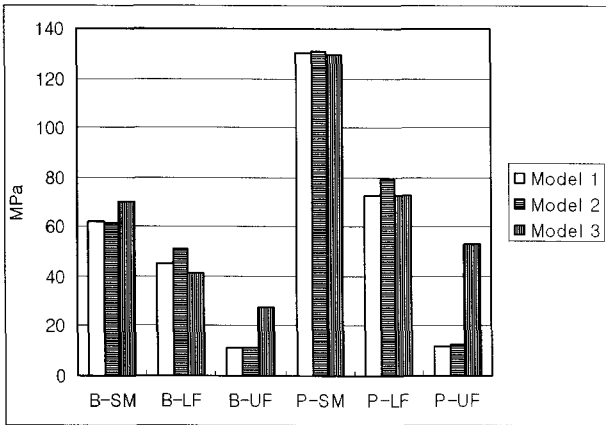


Figure 10. Peak stresses of coronal component under Load B. (B-buccal aspect, P-palatal aspect)

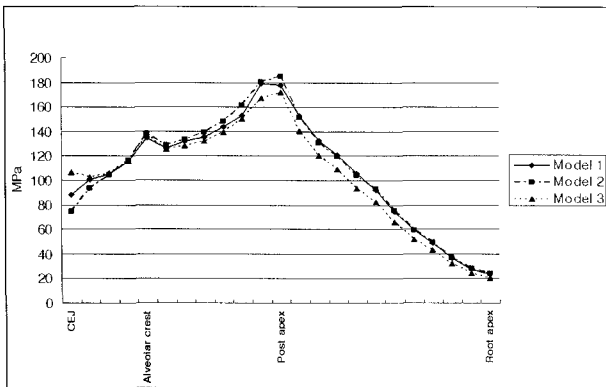


Figure 12. Stress analysis of buccal surface of the root under Load A.

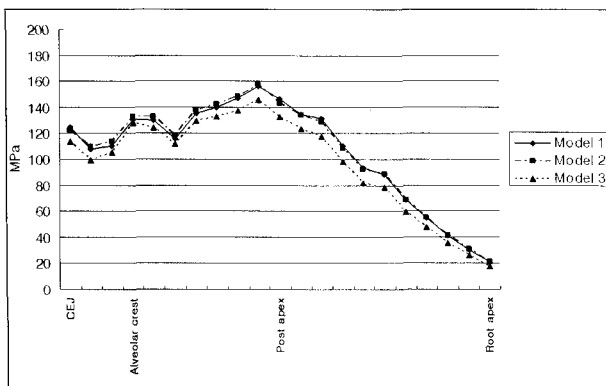


Figure 13. Stress analysis of palatal surface of the root under Load A.

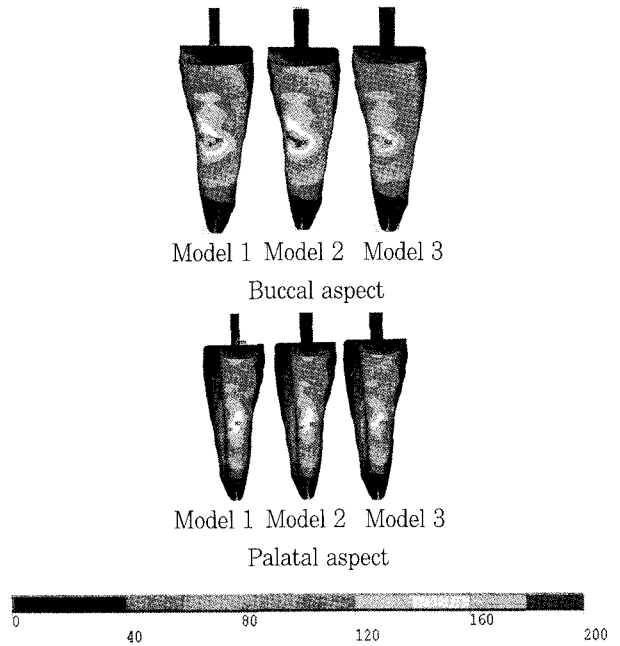


Figure 11. Buccal and palatal aspect of stress distribution at root surface under Load A.

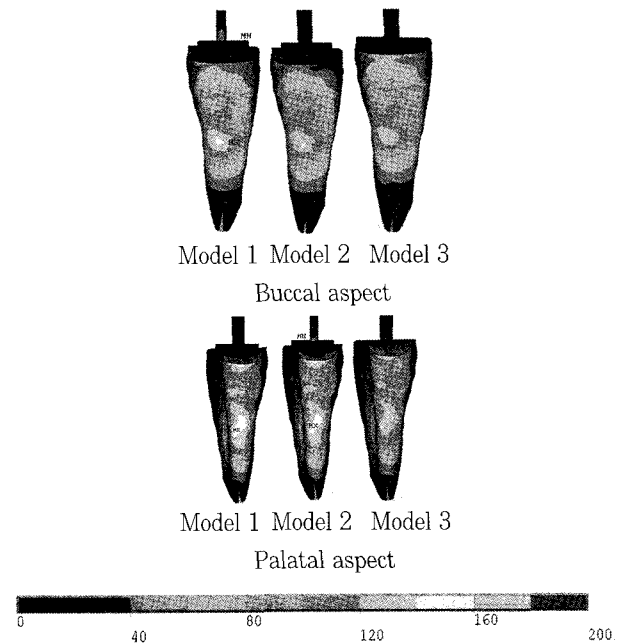


Figure 14. Buccal and palatal aspect of stress distribution at root surface under Load B.

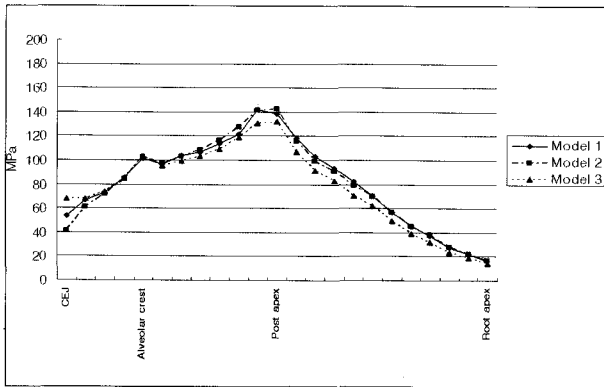


Figure 15. Stress analysis of buccal surface of the root under Load B.

For the successful rehabilitation of the endodontically treated tooth, it is imperative to understand the disparity and complexity of the relationship of interfaces with various restorative materials. When evaluating the interfaces of any system, their failures provide dentists with design principles that can be used with any post, core and crown retained system.

The purpose of this study was to evaluate the influence of elastic modulus of restorative materials and the number of interfaces of post and core systems on the stress distribution.

But the limitation of designing the FE models used in this study, interface characteristics in terms of adhesive bonding could not be simulated. However the different elastic modulus of components may play a role of interfaces. Any large mismatch between the physical properties of posts, cements, and residual tooth tissues may cause adverse stress concentrations at the different interfaces involved²⁸⁾.

In the present study, endodontically treated single root maxillary premolar was used, which present a restorative and an esthetic challenge because the occlusal forces on them are greater and their directions are different in the premolar area compared to the anterior teeth.

According to analysis of coronal structure distribution, the extent of stress distribution and magnitude of peak stress at the shoulder was highest in Model 3 and lowest in Model 2. But at the cervical margin of the crown, the peak stress of Model 2 was highest and lowest in Model 3. It would be explained that the rigid crown can resist deformation more effectively than the less rigid crown. Thus the stress was

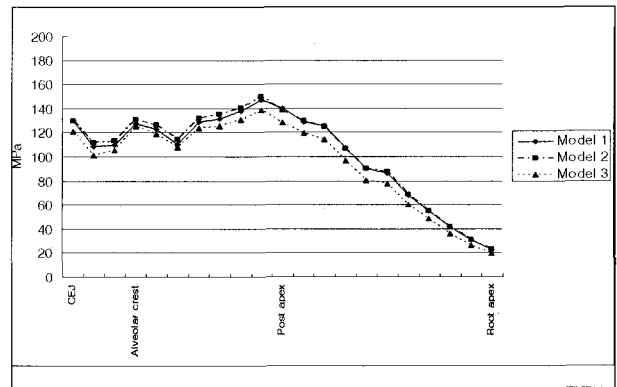


Figure 16. Stress analysis of palatal surface of the root under Load B.

concentrated at the cervical margin of crown itself rather than at the shoulder margin. The study of Hunter and Flood²⁹⁾ suggested that their experiments have indicated that the type of post and core restoration may be less important than the placement of a well-fitting crown with margins beyond the core restoration and it was agreed with this study.

Pegoretti *s.*³⁰⁾ claimed that stresses at the cervical margins could be lowered using less stiff crown materials like composite resins, but their claim is not accordance with the result of this study. On the contrary, Stricker *et al.*³¹⁾ suggested that all-ceramic crown with a high elastic modulus exhibited better and more stress-resistant marginal adaptation at the tooth-to-luting composite interface than EndoCrown. And this is in agreement with the result of present study.

The reason of highest stress distribution at UF of Model 3 is that less stiff EndoCrown was deformed easily compared to other models and this result in stress accumulation at the underlying upper ferrule. But the reason of highest stress distribution at LF of Model 2 could not be explained with the rigidity of the full veneer crown.

Although the buccal cusp was loaded under Load A, the peak stress of palatal SM was higher than that of buccal SM. Compared to buccal aspect, the palatal core was short and flat and this caused the high stress concentration at palatal cervical margin because of the low resistance to displacement.

Oyar *et al.*³²⁾ suggested that anatomical occlusal preparation designs were advantageous in stress distribution at buccal areas than palatal area because of

geometry of prepared tooth structure. In addition, it could be speculated that the length of palatal cervical margin is shorter than buccal cervical margin and this lead to heavy stress concentration at palatal shoulder margin.

According to analysis of root structure stress distribution, peak stress was located at level of post apex in all models. The development of stress concentration in the region adjacent to the apex of the endodontic post is in agreement with previous FE analysis^{33,34)}

Albuquerque *et al.*³⁵⁾ and Hayashi *et al.*³⁶⁾ reported that stiff post generated stress concentration at root surface. Rigid metal posts resisted lateral forces without distortion and this resulted in stress transfer to the less rigid dentin causing potential root cracking and fracture. But in this study, peak stress of Model 2 which was restored with fiber post was highest of all.

Others^{37,38)} have suggested that a Young's modulus approaching that of dentin is more desirable, as stress transmitted to the root on loading of the post will decrease, thus reducing the risk of root fracture. The ideal root canal post must be sufficiently elastic to accompany the natural flexural movements of the structure of the tooth, something that a very rigid metal post cannot do. EndoCrown used in present study had low stress at outer root surface, which was coincided with the study of Zarone *et al.*¹⁰⁾

From the results of this study, stress concentration at the root surface of post apex level was determined by the elastic modulus of definitive restoration rather than the rigidity of the post itself. Thus, the higher the elastic modulus of definitive restoration leads to the more stress concentration at the root surface.

In general, when a system with component of different rigidity is loaded, the more rigid component is capable of resisting greater forces without distortion. The less rigid component fails and relieves stress.

The elastic modulus of definitive restorations governed stress distribution, the influence of the post on the stress distribution of restored teeth could not be observed. For the explanation of this result, 2.0 mm ferrule height, 0.1 mm thickness of adhesive cement layer, and also considerable thickness of resin core in the pulp chamber could be considered as other fac-

tors that influence the stress distribution. Thus, further study is needed to compare the influence of post and core system using the models restored with same full veneer crown but with different post and core systems and varying ferrule height.

V. Conclusions

Within the limits of this study, the following conclusions were drawn:

1. The elastic modulus of the definitive restorations rather than the type of post and core system was the primary factor that influenced the stress distribution of endodontically treated maxillary premolars.
2. The stress concentration at the coronal structure could be lowered through the use of definitive restoration of high elastic modulus.
3. The stress concentration at the root structure could be lowered through the use of definitive restoration of low elastic modulus.

Reference

1. Nagasiri R, Chitmongkolsuk S. Long-term survival of endodontically treated molars without crown coverage: a retrospective cohort study. *J Prosthet Dent* 93:164-170, 2005.
2. Teixeira EC, Teixeira FB, Piasick JR, Thompson JY. An in vitro assessment of prefabricated fiber post system. *J Am Dent Assoc* 137:1006-1012, 2006.
3. Maccari PC, Conceição EN, Nunes MF. Fracture resistance of endodontically treated teeth restored with three different prefabricated esthetic posts. *J Esthet Restor Dent* 15:25-30, 2003.
4. Zalkind M, Hochman N. Esthetic considerations in restoring endodontically treated teeth with posts and cores. *J Prosthet Dent* 79:702-705, 1998.
5. Cheung W. A review of the management of endodontically treated teeth. Post, core and the final restoration *J Am Dent Assoc* 136:611-619, 2005.
6. Lassila LV, Tanner J, Le Bell AM, Narva K, Vallittu PK. Flexural properties of fiber reinforced root canal posts. *Dent Mater* 20:29-36, 2004.
7. Genovese K, Lamberti L, Pappalettere C. Finite element analysis of a new customized composite post system for endodontically treated teeth. *J Biomech* 38:2375-2389, 2005.
8. Fernandes AS, Shetty S, Coutinho I. Factors determining post selection: a literature review. *J Prosthet Dent* 90:556-562, 2003.
9. Baldissara P, Di Grazia V, Palano A, Ciocca L. Fatigue resistance of restored endodontically treated teeth: a multiparametric analysis. *Int J Prosthodont* 19:25-27, 2006.

10. Zarone F, Sorrentino R, Apicella D, Valentino B, Ferrari M, Aversa R, Apicella A. Evaluation of the biomechanical behavior of maxillary central incisors restored by means of endocrowns compared to a natural tooth: a 3D static linear finite elements analysis. *Dent Mater* 22:1035-1044, 2006.
11. Ortega VL, Pegoraro LF, Conti PC, do Valle AL, Bonfante G. Evaluation of fracture resistance of endodontically treated maxillary premolars, restored with ceromer or heat-pressed ceramic inlays and fixed with dual-resin cements. *J Oral Rehabil* 31:393-397, 2004.
12. Otto T. Computer-aided direct all-ceramic crowns: preliminary 1-year results of a prospective clinical study. *Int J Periodontics Restorative Dent* 24:446-455, 2004.
13. Cohen BL, Condos S, Musikant BL, Deutsch AS. Pilot study comparing the photoelastic stress distribution for four endodontic post systems. *J Oral Rehabil* 23:679-685, 1996.
14. Ross RS, Nicholls JI, Harrington GW. A comparison of strains generated during placement of five endodontic posts. *J Endod* 17:450-456, 1991.
15. Lee HM, Hur B, Kim HC, Woo SG, Kim KH, Son K, Park JK. Effects of occlusal load on the cervical stress distribution : A three-dimensional finite element study. *J Kor Acad Cons Dent* 31:427-436, 2006.
16. Toparli M. Stress analysis in a post-restored tooth utilizing the finite element method. *J Oral Rehabil* 30:470-476, 2003.
17. Park JK, Hur B, Kim SK. The influence of combining composite resins with different elastic modulus on the stress distribution of class V restoration: A three-dimensional finite element study. *J Kor Acad Cons Dent* 33:184-197, 2008.
18. Lanza A, Aversa R, Rengo S, Apicella D, Apicella A. 3D FEA of cemented steel, glass and carbon posts in a maxillary incisor. *Dent Mater* 21:709-715, 2005.
19. Rosenstiel, Land, Fujimoto Textbook of contemporary fixed prosthodontics 3rd edition Mosby, p 216-229, 2001.
20. Cheong YK, Hur B, Lee HJ. A comparison of post and core techniques with finite element analysis. *J Kor Acad Cons Dent* 21:70-86, 1996.
21. Cormier CJ, Burns DR, Moon P. In vitro comparison of the fracture resistance and failure mode of fiber, ceramic, and conventional post systems at various stages of restoration. *J Esthet Restor Dent* 15:313-318, 2003.
22. Butz F, Lennon AM, Heydecke G, Strub JR. Survival rate and fracture strength of endodontically treated maxillary incisors with different post and core system. *Int J Prosthodont* 14:58-64, 2001.
23. Mannocci F, Ferrari M, Watson TF. Intermittent loading of teeth restored using quartz fiber, and zirconium dioxide ceramic root canal posts. *J Adhes Dent* 1:153-158, 1999.
24. Rosentritt M, Furer C, Behr M, Lang R, Handel G. Comparison of in vitro fracture strength of metallic and tooth-coloured post and cores. *J Oral Rehabil* 27:595-601, 2000.
25. Akkayan B, Gulmez T. Resistance to fracture of endodontically treated teeth restored with different post systems. *J Prosthodont* 87:431-437, 2002.
26. Assif D, Oren E, Marshak BL, Aviv I. Photoelastic analysis of stress transfer by endodontically treated teeth to the supporting structure using different restorative techniques. *J Prosthodont* 61:535-543, 1989.
27. Akkayan B. An in vitro study evaluating the effect of ferrule length on fracture resistance of endodontically treated teeth restored with fiber-reinforced and zirconia dowel systems. *J Prosthodont* 92:155-162, 2004.
28. Dietschi D, Romelli M, Goretti A. Adaptation of adhesive posts and cores to dentin after fatigue testing. *Int J Prosthodont* 10:498-507, 1997.
29. Hunter AJ, Flood AM. The restoration of endodontically treated teeth, Part 3. Cores. *Aust Dent J* 34:115-121, 1989.
30. Pegoretti A, Fambri L, Zappini G, Bianchetti M. Finite element analysis of a glass fibre reinforced composite endodontic post. *Biomaterials* 23:2667-2682, 2002.
31. Stricker EJ, Göhring TN. Influence of different posts and cores on marginal adaptation, fracture resistance, and fracture mode of composite resin crowns on human mandibular premolars. An in vitro study. *J Dent* 34:326-335, 2006.
32. Oyar P, Ulusoy M, Eskitascioglu G. The element analysis of stress distribution of 2 different tooth preparation designs in porcelain-fused-to-metal crowns. *Int J Prosthodont* 19:85-91, 2006.
33. Williams KR, Edmundson JT. A finite element stress analysis of an endodontically restored tooth. *Eng Med* 13:167-173, 1984.
34. Cailleteau JG, Rieger MR, Rieger MR, Akin JE. A comparison of intracanal stresses in a post-restored tooth utilizing the finite element method. *J Endod* 18:540-544, 1992.
35. Albuquerque Rde C, Polleto LT, Fontana RH, Cimini CA. Stress analysis of an upper central incisor restored with different posts. *J Oral Rehabil* 30:936-943, 2003.
36. Hayashi M, Takahashi M, Takahashi M, Imazato S, Ebisu S. Fracture resistance of pulpless teeth restored with post-cores and crowns. *Dent Mater* 22:477-485, 2006.
37. Gu XH, Kern M. Fracture resistance of crowned incisors with different post systems and luting agents. *J Oral Rehabil* 33:918-923, 2006.
38. Newman MP, Yaman P, Dennison J, Rafter M, Billy E. Fracture resistance of endodontically treated teeth restored with composite posts. *J Prosthodont* 89:360-367, 2003.

국문초록

상이한 방법으로 수복한 근관치료된 상악 제2소구치의 응력분포: 3차원 유한요소법적 분석

임동열¹ · 김현철¹ · 허 복¹ · 김광훈² · 손 권² · 박정길^{1*}

¹부산대학교 치의학전문대학원 보존학교실, ²부산대학교 공과대학 기계설계공학과

본 연구의 목적은 근관치료 된 치아를 구조와 물성이 다른 post와 core 그리고 전장관으로 수복한 후 과도한 교합하중을 가했을 때 치아에 나타나는 응력분포를 조사하기 위함이다.

발치 된 상악 제2소구치를 micro-CT로 단층촬영하고 3D Doctor로 윤곽선을 추출한 다음 HyperMesh Ver. 6으로 삼차원 치아모형을 만들고 다음과 같은 세 가지 방법으로 수복한 유한요소모형을 제작하였다. 1) 스테인레스 스틸 포스트와 복합레진 코어 그리고 도재소부전장금관으로 수복한 모형. 2) fiber 포스트와 복합레진 코어 그리고 전부도재관으로 수복한 모형. 3) 포스트, 코어와 전장관이 일체형인 간접복합레진 EndoCrown으로 수복한 모형. 형성된 모형의 협측 또는 설측교두에 500N의 하중을 가하였으며 하중의 방향은 치아 장축에 대해 45도 이었다. 치관부와 치근부의 von Mises 응력을 ANSYS 9.0프로그램으로 분석한 결과 포스트와 코어의 형태보다는 전장관 재료의 탄성계수가 근관치료된 상악 소구치의 응력분포를 좌우하였다. 치관부에서는 재료의 탄성계수가 높은 전장관으로 수복한 모형이 낮은 응력분포를 보였다. 치근부에서는 재료의 탄성계수가 낮은 전장관으로 수복한 모형이 낮은 응력분포를 보였다

주요단어 : Endocrown, 탄성계수, 유한요소분석, 응력분포, 상악소구치