

Review Article

Soft Tissue Masses Showing Low Signal Intensity on T2-weighted Images: Correlation with Pathologic Findings

You Seon Song¹, In Sook Lee¹, Kyung Un Choi², Kil Ho Cho³, Sung Moon Lee⁴, Young Hwan Lee⁵, Jeung Il Kim⁶

¹Department of Radiology, Pusan National University Hospital, Busan, Korea

²Department of Pathology, Pusan National University Hospital, Busan, Korea

³Department of Radiology, Yeungnam University Hospital, Daegu, Korea

⁴Department of Radiology, Keimyung University School of Medicine, Dongsan Medical Center, Daegu, Korea

⁵Department of Radiology, Catholic University of Daegu Hospital, Daegu, Korea

⁶Department of Orthopedic Surgery, Pusan National University Hospital, Busan, Korea

Objective: The aims of this article are to differentiate soft tissue masses showing low signal intensity on T2-weighted images (T2WIs) according to the histopathologic findings.

Conclusion: To know relatively small numbered soft tissue masses with low signal intensities on T2WIs adding characteristic location, morphology, signal intensities on other sequences might be helpful for differential diagnosis of mostly non-specific soft tissue tumors on MRI.

Index words : Soft tissue neoplasm · MR imaging · T2WI · hypointense

INTRODUCTION

Most soft tissue tumors show high signal on T2-weighted images (T2WIs). Some tumors with the same histologic diagnoses showed different MR appearances in that some had a long T2 while others had a short T2 (1). Abundant collagen and marked hypocellularity or acellularity in a soft-tissue tumor or hemosiderin-laden masses result in a decreased signal on T2WI (1, 2). Lesions with decreased signal intensity (SI) on both T1- and T2WIs might represent densely mineralized

lesions. And also thrombus, phlebolith, hemorrhage and fast blood flow can show low signal intensity on T2WI. We defined low SI on T2WI as signal intensity lower than that of fat or fluid and signal intensity equal, slightly higher or lower to that of skeletal muscle. The aims of this article are to differentiate soft tissue masses showing low SI according to the histopathologic findings, knowing components contributing to low signal intensity on T2WIs.

Components that could result in low signal intensity on T2WI

HIGH COLLAGEN COMPONENTS AND HYPOCELLULARITY

Fibrous lesion with high collagen contents

Fibroma of tendon sheath

Fibroma of the tendon sheath is a benign fibroblastic proliferation that occurs in the distal extremities often

• Received; October 20, 2014 • Revised; November 29, 2014

• Accepted; December 24, 2014

Corresponding author : In Sook Lee, M.D.

Department of Radiology, Pusan National University Hospital, 1-10 Ami-dong, Seo-gu, Busan 602-739, Korea.

Tel. 82-51-240-7354, Fax. 82-51-244-7534 E-mail : lis@pusan.ac.kr

This is an Open Access article distributed under the terms of the Creative Commons Attribution Non-Commercial License (<http://creativecommons.org/licenses/by-nc/3.0/>) which permits unrestricted non-commercial use, distribution, and reproduction in any medium, provided the original work is properly cited.

attached to tendon or tendon sheath (3). The MR imaging findings vary when areas with increased cellularity or myxoid change occur within the lesion (4). Low SI on T2WI can be attributed to the overall hypocellularity and highly collagenous stroma found in this region (1, 3) (Fig. 1).

Nodular fasciitis

Nodular fasciitis is a benign soft tissue lesion characterized by proliferation of fibroblasts (5). Lesions

having a myxoid matrix and hypercellularity in the early stage demonstrate higher SI than that of muscle on T1WIs and than that of fat on T2WIs. Mature lesions are often characterized by increased fibrosis, and the fibrotic areas present as markedly hypointense to the surrounding muscles on all pulse sequences (5, 6) (Fig. 2).

Desmoplastic fibroblastoma

Desmoplastic fibroblastoma is a fibrous soft tissue

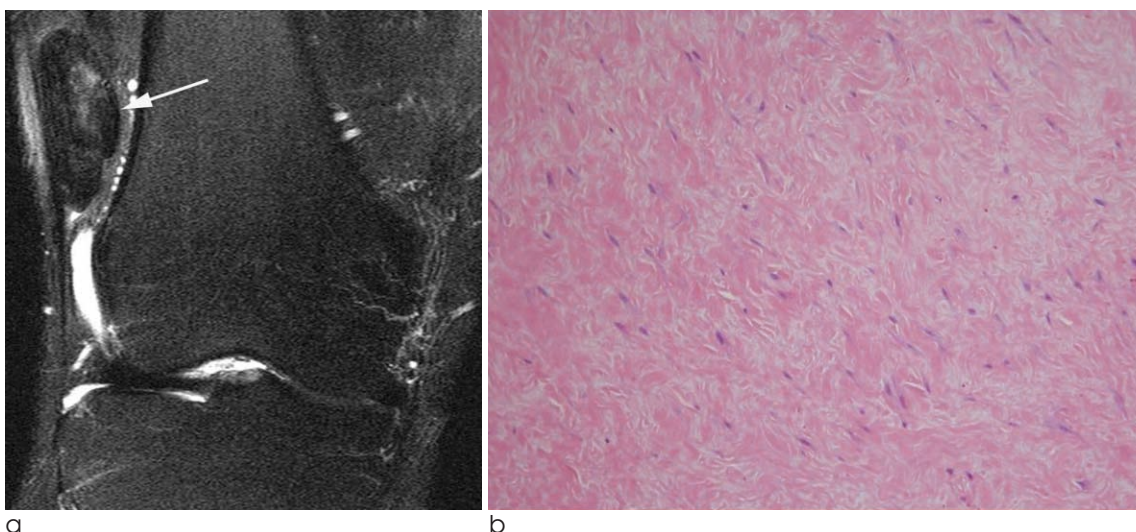


Fig. 1. 61-year-old male patient with a fibroma of the tendon sheath. (a) On a coronal fat suppressed T2-weighted image, the mass located at the lateral aspect of the vastus lateralis muscle shows signal intensity equal to that of skeletal muscle. This finding is attributable to the high quantity of collagen in many of these tumors. (b) A photomicrograph (H & E staining, ×200) shows hypocellularity and the mass contains a dense collagenous matrix and scattered spindle-shaped fibroblasts.

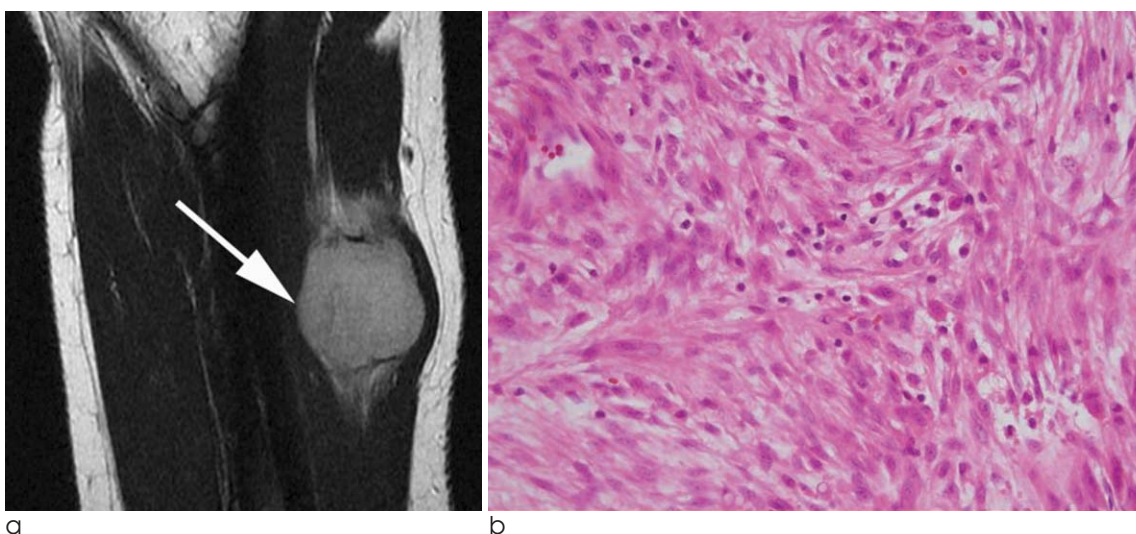


Fig. 2. 19-year-old male patient with nodular fasciitis. (a) On a sagittal fat-suppressed T2WI of the forearm, a well-defined soft tissue mass shows signal intensity higher than that of the subcutaneous fat and muscle. (b) A photomicrograph (H & E staining, ×400) shows increased cellularity. There are few foci of myxoid degeneration.

tumor. The low SI on T2WI is attributed to the low cellularity of the mass in a background of abundant collagen (7).

Fibromatoses

The fibromatoses are a diverse group of a soft tissue lesions that occur at different ages and anatomic locations and that have common histopathologic features (8). Fibromatosis in the proliferative phase demonstrates a high degree of cellularity and have a predominantly hyperintense signal on T2WIs. These

lesions typically mature over time with increased collagen content and reduced cellularity, with a resultant decrease in SI on T2WIs (9) (Fig. 3).

Malignant fibrous histiocytoma (MFH)

MFH is a pleomorphic sarcoma, although MFH now appears more related to the fibroblasts, myofibroblasts, or undifferentiated mesenchymal cells. Generally MFH demonstrates an intermediate SI on T1WIs and heterogeneous high SI on T2WIs reflecting the variable pattern seen histologically (10). These

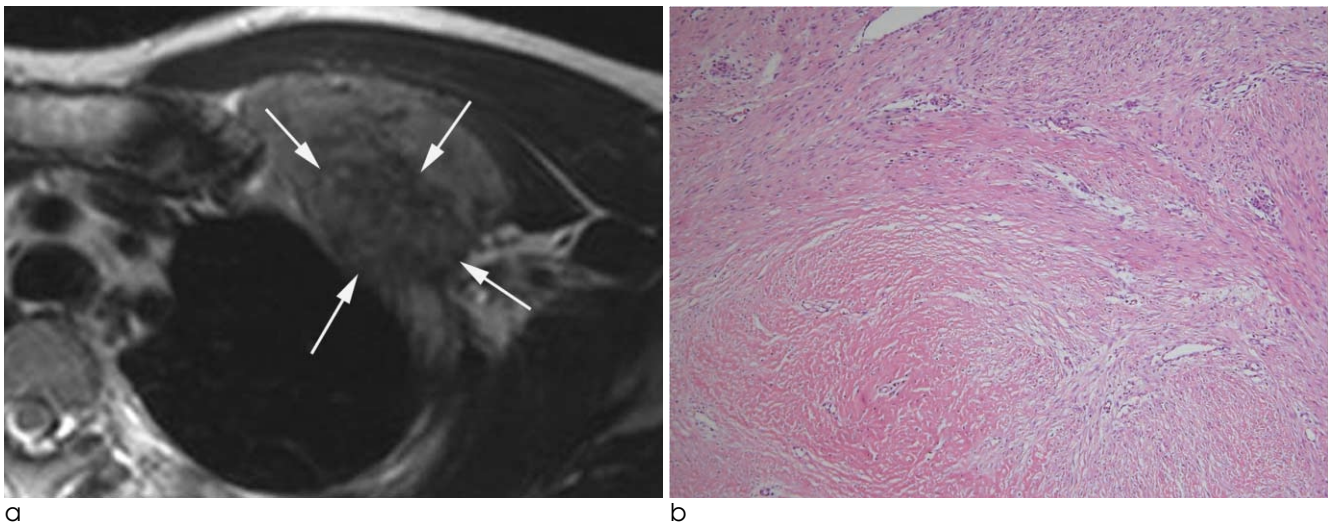


Fig. 3. 40-year-old male patient with fibromatosis. **(a)** A mass located at the anterior chest wall shows signal intensity slightly higher than that of skeletal muscle on a T2WI. The mass contains a region with lower signal intensity. **(b)** A photomicrograph (H & E staining, $\times 100$) shows a lesion that is predominantly fibrotic with low cellularity and with heavy collagen deposition.

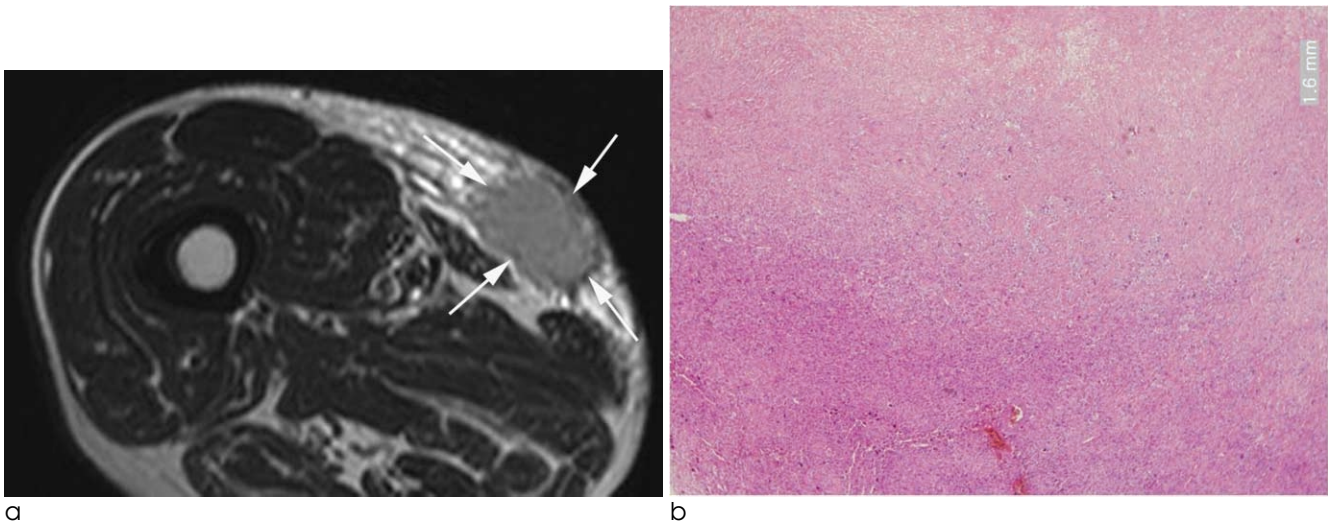
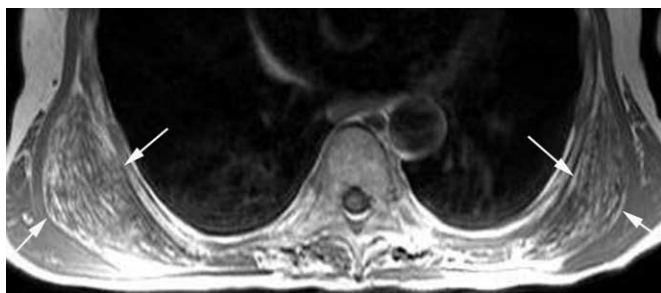


Fig. 4. 80-year-old male patient with a malignant fibrous histiocytoma. **(a)** On an axial T2WI of the right thigh, the mass located at the superficial aspect of the fascia shows intermediate signal intensity higher than that of skeletal muscle. **(b)** A photomicrograph (H & E staining, $\times 40$) shows hypercellularity with a relatively low collagen content.

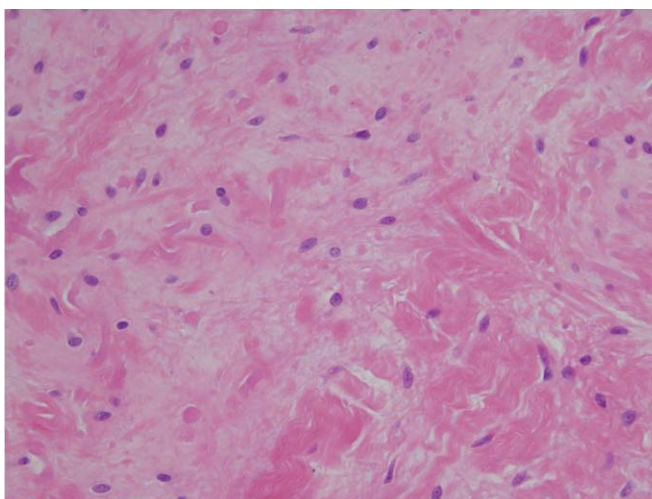
variations include regions with prominent fibrous tissue (high collagen content; low SI); calcification (low signal foci); hemorrhage (high signal on all pulse sequences; fluid levels), necrosis (low signal on T1WI and high signal on T2WIs); and areas of tumor with lower collagen content (intermediate on T1WI; high signal on T2WI) (11) (Fig. 4).

Elastofibroma

Elastofibroma is a degenerative or reactive fibrous pseudotumor that arises most commonly between the inferior margin of the scapula and posterior chest wall in elderly individuals (9). On both T1- and T2WIs, the lesion is well defined and has intermediate signal intensity similar to that of skeletal muscle, corresponding to areas of dense fibrous connective tissue with interlaced areas of SI similar to that of fat

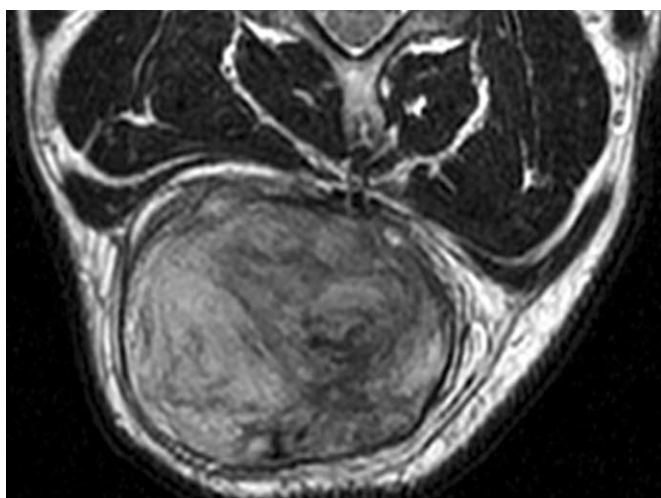


a

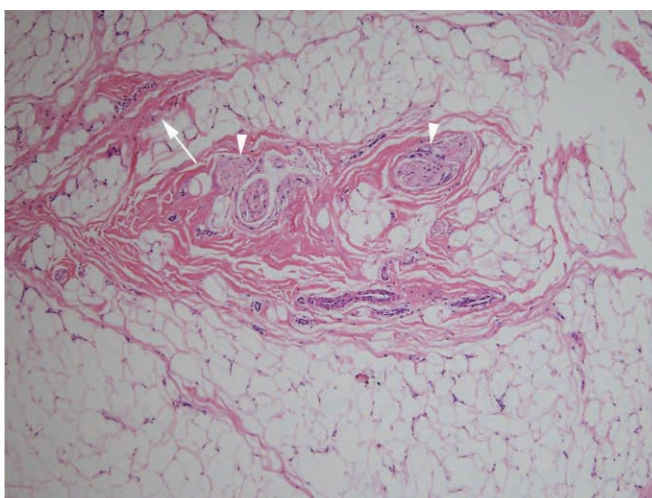


b

Fig. 5. 64-year-old male patient with an elastofibroma. (a) An axial T2WI shows soft tissue with signal intensity similar to that of the adjacent skeletal muscle, interlaced with streaks of tissue with signal intensity of fat between the inferior margin of the scapula and posterior chest wall. This appearance corresponds to areas of dense fibrous connective tissue interlaced with areas of fat. (b) A photomicrograph (H & E staining, $\times 400$) demonstrates scattered elastic fibers in a background of collagenous tissue. Relative hypocellularity is seen.



a



b

Fig. 6. 45-year-old male patient with a fibrolipoma. (a) An axial T2WI shows the nonadipose component to have decreased signal intensity similar to that of muscle. Note the presence of adipose tissue in the interstices of the mass. (b) A photomicrograph (H & E staining, $\times 100$) shows fibrolipomatous proliferation around the nerves (arrowheads). The presence of fibrous septae (arrow) is noted.

(12) (Fig.5).

Fibrolipoma

Lipomas occasionally contain other mesenchymal elements. The most common of these is fibrous connective tissue, which may demonstrate a septal configuration, appearing as linear areas of decreased signal on MRI, regardless of pulse sequence (Fig. 6). When significant fibrous tissue is present, these lesions may be termed fibrolipoma.

Neurogenic lesion with high collagen contents

Traumatic neuroma

Traumatic neuromas develop from a nonneoplastic proliferation of the proximal end of a severed, partially transected, or injured nerve as a result of trauma or surgery. They typically have intermediate to high SI on T2WI. Their SI is often heterogeneous, with a ringlike pattern (“fascicular sign”), which correlates with the histologic morphology of nerve fascicles (13) (Fig. 7).

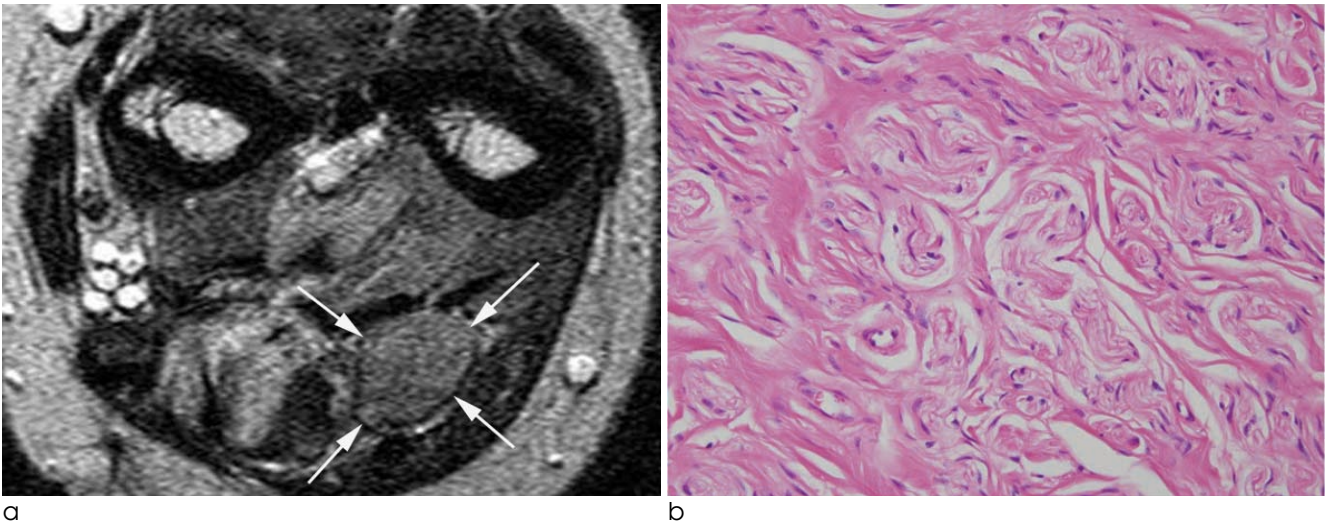


Fig. 7. 31-year-old male patient with an amputation neuroma. (a) The mass (arrows) located at the ventral aspect of the distal portion of the amputated forearm shows a fascicular sign on an axial T2WI of the forearm. (b) A photomicrograph (H & E staining, $\times 100$) shows numerous nerve bundles and the surrounding fibroblasts with a collagenous matrix.

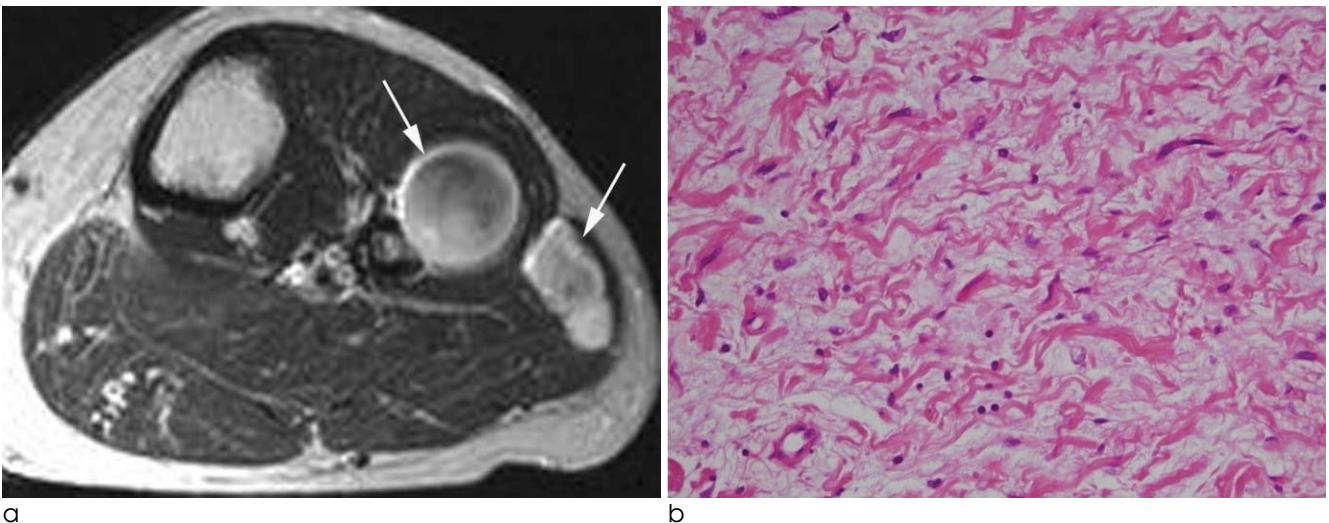


Fig. 8. 34-year-old female patient with two neurofibromas. (a) An axial T2WI shows a well-defined mass with a center of low signal intensity and high signal intensity peripheral rim (target sign) through two muscular compartments. (b) A photomicrograph (H & E staining, $\times 200$) shows scattered neurofibroma cells and a background of loosely packed collagen fibers and myxoid stroma.

Schwannoma

Schwannomas are benign slow-growing encapsulated tumors of nerve sheath origin (13). Histologically they are composed of two cell types: Antoni A and Antoni B. The Antoni A cells are densely packed and arranged in fascicles, Antoni B cells are less compact and are prone to cystic degeneration. T2WIs corresponds histologically to peripheral myxomatous tissue and central fibrocollagenous tissue. Another intrinsic MR imaging characteristic, fascicular sign manifests as multiple small ringlike structures (with peripheral higher signal intensity) on either T2- or proton density-weighted MR images. This sign corresponds to the fascicular bundles seen pathologically in neurogenic neoplasms (13).

Neurofibroma

Neurofibromas are nonencapsulated, often infiltrative lesions (14). Diffuse type is a poorly defined lesion that spreads along connective tissue septa and surrounds rather than destroys adjacent normal structures. Skin and subcutaneous tissue involvement was most typical (15). They often show predominant low SI on T2WIs, may be related to the high collagen

content of these lesions (13). When the central area of the tumor is composed of dense collagenous tissue, it has decreased SI on T2WIs, resulting in a characteristic “target” appearance (14) (Fig. 8).

HEMOSIDERIN

Giant cell tumors of the tendon sheath (GCTTS)

GCTTS is a benign proliferative lesion of synovial origin arising from the tendon sheath, joint capsule, bursa or ligaments (14). The MR imaging features are variably heterogeneous and depend on the relative proportions of fat, fibrous tissue, and hemosiderin, although the SI of lesions is predominantly low (14, 16). Typical lesions have areas of low SI on both T1- and T2WIs due to the paramagnetic effect of hemosiderin (14, 16).

Pigmented villonodular synovitis (PVNS)

PVNS represents the diffuse and intraarticular form of this spectrum of proliferative disorders of the synovium (16). On MR imaging, the diffuse or multinodular thickening of the synovium shows low SI on T2WIs due to the magnetic susceptibility effect

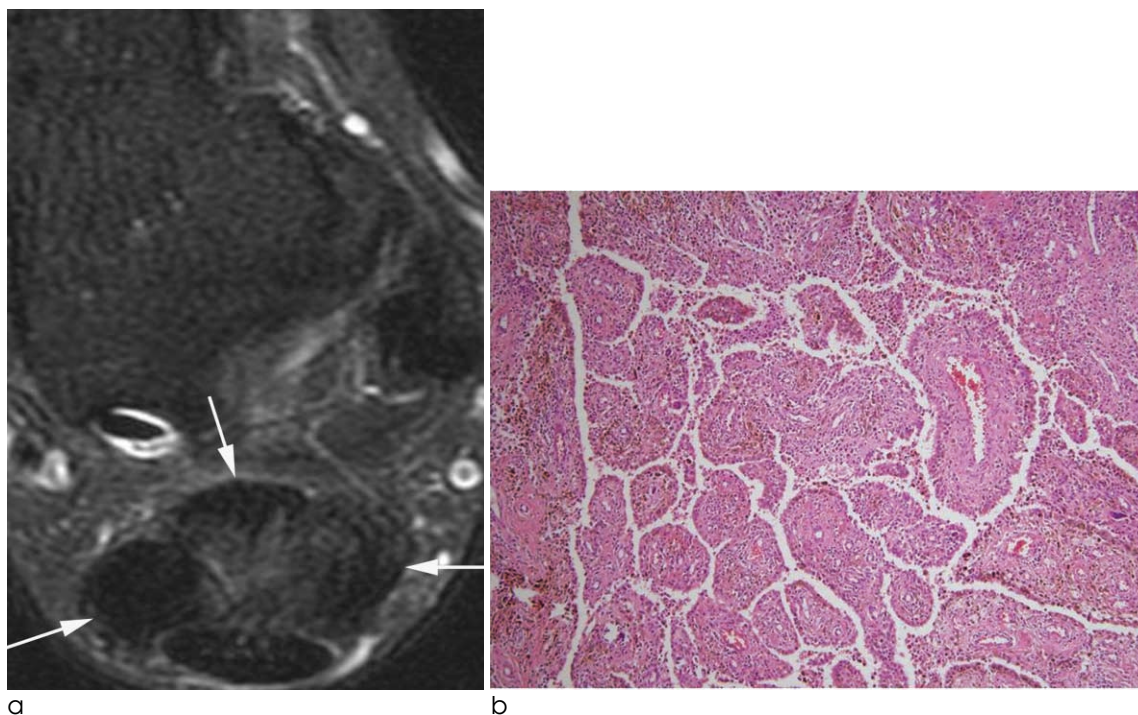


Fig. 9. 33-year-old female patient with diffuse-type giant cell tumor (pigmented villonodular synovitis). **(a)** A fat-suppressed axial T2WI **(a)** shows a lobulated mass with low signal intensity in the retrocalcaneal bursa. **(b)** Photomicrographs (H & E staining, $\times 100$) demonstrate the presence of multiple foci of hemosiderin deposits.

produced by hemosiderin (16) (Fig. 9).

MINERALIZATION

Synovial chondromatosis or osteochondromatosis

Synovial osteochondromatosis is a benign monarticular disorder of uncertain cause characterized by

proliferation and metaplastic transformation of the synovium with formation of multiple cartilaginous nodules (17). MR imaging is characterized as lobulated, homogeneous, intermediate, intraarticular SI similar to that of muscle on T1WIs, with high signal intensity on T2WIs and focal areas of low SI with all pulse sequences. The areas of signal void



Fig. 10. 60-year-old female patient with synovial osteochondromatosis. **(a)** On a sagittal T2WI of the ankle, multiple areas of signal void are noted within the effusion of the posterior ankle joint. **(b)** A corresponding plain radiograph shows the presence of multiple calcified nodules.



Fig. 11. 40-year-old female patient with myositis ossificans. **(a)** A sagittal T2WI shows an inhomogeneous, well-defined mass surrounded by diffuse edema in the anteromedial aspect of the upper arm. The mass is surrounded by a thin hypointense rim, representing peripheral ossification. **(b)** As seen on a plain radiograph, a faintly mineralized mass is present.

corresponded to regions of calcification (18) (Fig. 10).

Myositis ossificans

Myositis ossificans (MO) is a benign, solitary, self-limiting, ossifying soft-tissue mass typically occurring within skeletal muscle. The MR imaging appearance changes with the age of the lesion, reflecting the evolving histologic characteristics. In the intermediate or older lesions, MR images showed curvilinear and irregular regions of decreased SI peripherally as well as within lesions, corresponding to mineralization seen

on CT scans and radiographs. Areas of hemosiderin deposition from previous hemorrhage and fibrosis also may contribute to areas of decreased SI on both pulse sequences (19, 20) (Fig. 11).

Pilomatricoma

Pilomatricoma is a benign calcifying tumor that is thought to arise from skin appendages. Low SI on T2WI may be related to the large amount of collagen within the lesion. Small inhomogeneities may be related to calcifications or degenerative changes (21)

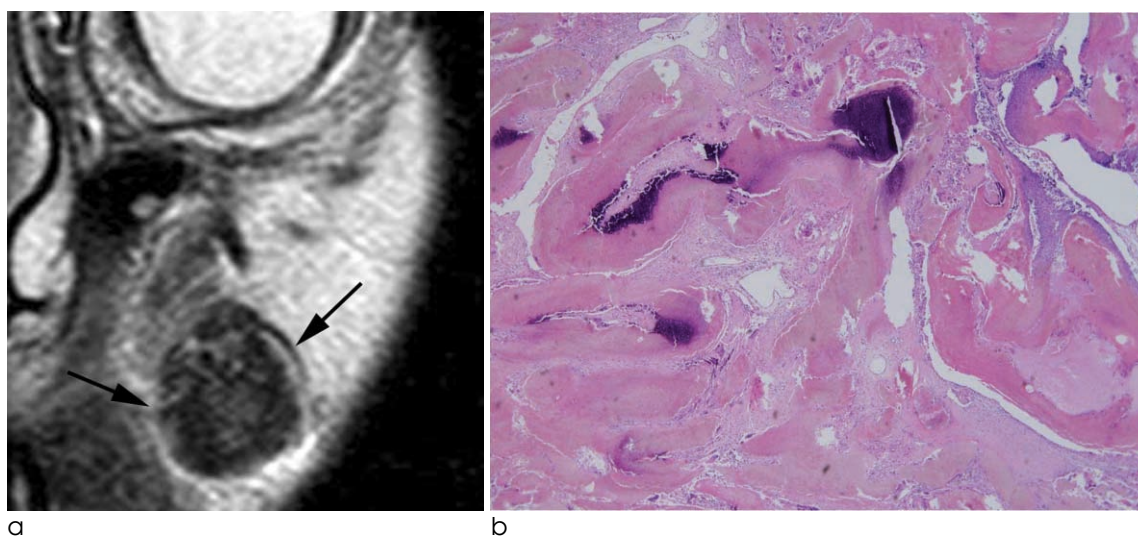


Fig. 12. 11-year-old male patient with a pilomatricoma. (a) On a coronal T2WI, a heterogeneous low signal intensity mass is seen in the subcutaneous fat layer of the cheek. (b) A photomicrograph (H & E staining, ×40) shows calcifications and ossification.

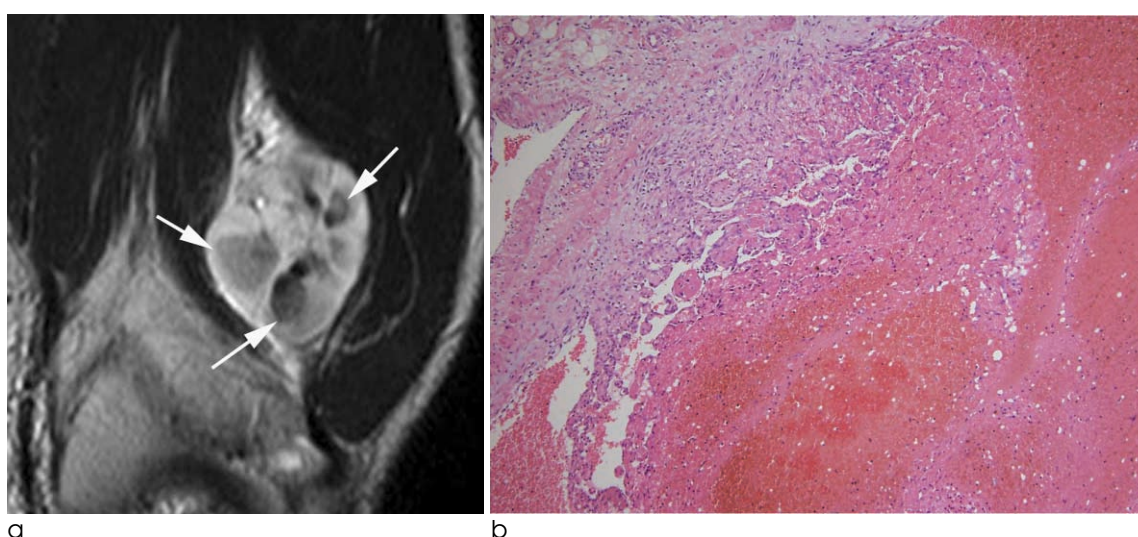


Fig. 13. 25-year-old male patient with intravascular papillary endothelial hyperplasia. (a) A coronal T2WI of the thigh shows a well-defined mass with a hyperintense peripheral region and multiple hypointense or isointense central regions. (b) A photomicrograph (H & E staining, ×100) shows hemorrhage and a thrombus (arrows).

(Fig. 12).

THROMBUS, PHLEBOLITH, HEMORRHAGE AND FAST BLOOD FLOW

Intravascular papillary endothelial hyperplasia

Intravascular papillary endothelial hyperplasia (IVPEH) is a reactive proliferative lesion of endothelial cells within the vessels and is usually associated with thrombi. Hyperintense region on T2WI corresponded to the ectatic blood-pool space in the hemangioma as well as to isointense central regions composed of thrombosis and endothelial papillary proliferative tissue (22). T2 sequences may show low SI areas reflecting thrombotic or hemorrhagic material and low signal internal septae have been described (23) (Fig. 13).

Soft tissue hemangioma

Hemangioma is one of the most common soft tissue tumors and usually located superficially but may involve deep structures such as skeletal muscle. On T2WI, it shows areas that are very high SI due to vascular tissue and other regions that are intermediate in SI due to fat (24). Punctate or reticular low SI areas may be present, representing fibrous tissue, fast flow within vessels, or foci of calcification. Areas of thrombosis appear as circular low SI areas at MR imaging, similar to phleboliths (25).

Synovial sarcoma

Synovial sarcoma is a mesenchymal neoplasm of uncertain pathogenesis. MR images may demonstrate complex signal characteristics, with fluid levels, hemorrhage, and septation in the lesions. Pathologi-

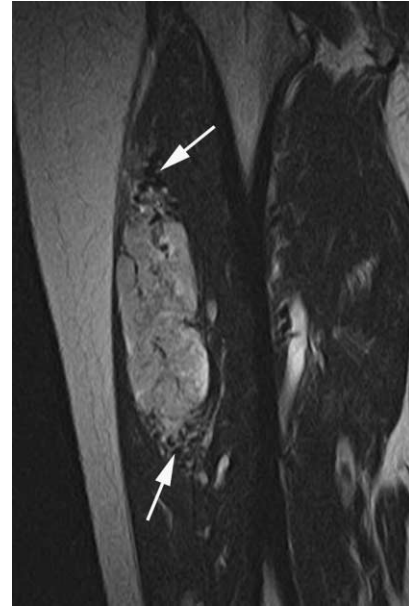


Fig. 14. 26-year-old male patient with an alveolar soft part sarcoma. A coronal T2WI of the thigh shows a lobulated margined mass with higher signal intensity than that of the skeletal muscle and lower signal intensity than that of fat. Note the serpentine flow voids, representing enlarged blood vessels. Signal voids (arrows) are seen at the margin of the tumor.

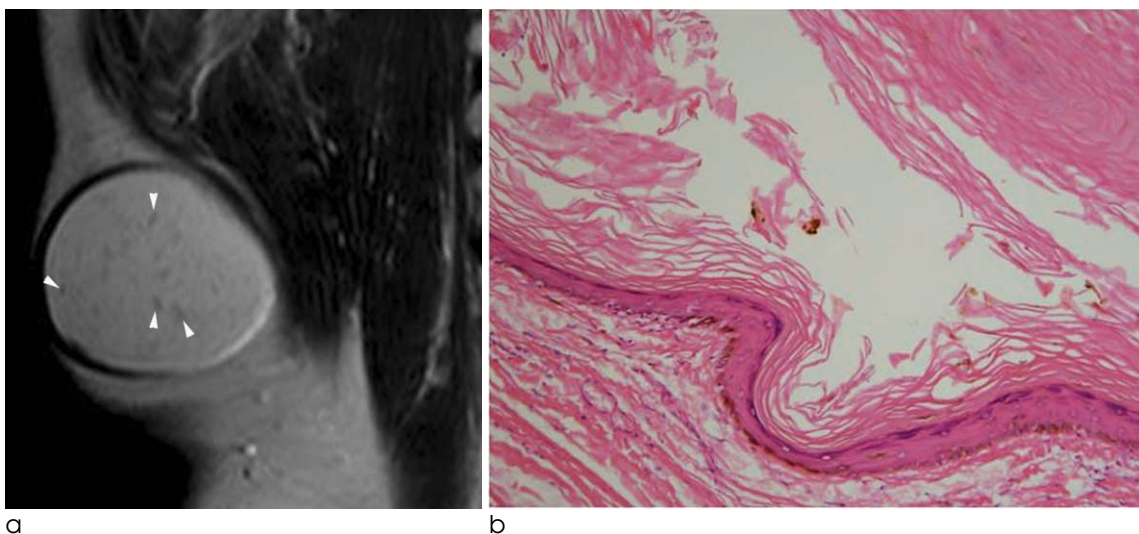


Fig. 15. 15-year-old male patient with an epidermoid cyst. **(a)** A coronal T2WI obtained through the abdominal wall shows a well-defined mass of intermediate to high signal intensity with dot-like low signal components in the subcutaneous fat layer. **(b)** A photomicrograph (H & E staining, $\times 100$) shows keratin debris within the epithelial lining.

cally triple signal appearance on T2WIs reflects the mixture of solid, cystic, fibrous, and hemorrhagic elements present in many synovial sarcomas (26).

Alveolar soft part sarcoma

Alveolar soft part sarcoma is a highly vascular malignant tumor which occurs most often in the soft tissues of the pelvis and lower limbs. On dynamic MRI, the margin of the tumor enhanced strongly in the early phase and washout occurred in the late phase. The signal void representing fast flow was shown at the margin of the tumor (27).

OTHERS

Epidermoid cyst

Epidermoid cysts are slowly growing intradermal or subcutaneous tumors. Typically, unruptured lesions are well-defined round or ovoid lesions of a high SI background with variable low SII components on T2WIs (28) (Fig. 15).

Lymphoma

Lymphomas are characterized pathologically by the proliferation of cells native to the lymphoid tissue-lymphocytes, histiocytes, and their precursors (29). At MRI extranodal soft-tissue lymphomas are homogeneously isointense or slightly hypointense relative to normal muscle on T1WIs and hyperintense to muscle on T2WIs (30). Lymphomas usually have homogeneously low SI on T2WIs because of their dense cellularity (31).

In conclusions, We described the possible disease entities that can show low signal intensity on T2-weighted image according to the composition of the soft tissue tumors. In addition to this, characteristic locations, morphology and signal intensities on other sequences may be helpful for the differential diagnosis of mostly nonspecific soft tissue masses on MRI.

References

1. Sundaram M, McGuire MH, Schajowicz F. Soft-tissue masses: histologic basis for decreased signal (short T2) on T2-weighted MR images. *AJR Am J Roentgenol* 1987;148:1247-1250
2. Sundaram M, McLeod RA. MR imaging of tumor and tumorlike lesions of bone and soft tissue. *AJR Am J Roentgenol* 1990;155: 817-824
3. Hur J, Damron TA, Vermont AI, Mathur SC. Fibroma of tendon sheath of the infrapatellar fat pad. *Skeletal Radiol* 1999;28:407-410
4. Fox MG, Kransdorf MJ, Bancroft LW, Peterson JJ, Flemming DJ. MR imaging of fibroma of the tendon sheath. *AJR Am J Roentgenol* 2003;180: 1449-1453
5. Wang XL, De Schepper AM, Vanhoenacker F, et al. Nodular fasciitis: correlation of MRI findings and histopathology. *Skeletal Radiol* 2002;31:155-161
6. Blacksin MF, Ha DH, Hameed M, Aisner S. Superficial soft-tissue masses of the extremities. *Radiographics* 2006;26:1289-1304
7. Miettinen M, Fetsch JF. Collagenous fibroma (desmoplastic fibroblastoma): a clinicopathologic analysis of 63 cases of a distinctive soft tissue lesion with stellate-shaped fibroblasts. *Hum Pathol* 1998;29:676-682
8. Robbin MR, Murphey MD, Temple HT, Kransdorf MJ, Choi JJ. Imaging of musculoskeletal fibromatosis. *Radiographics* 2001; 21:585-600
9. Dinauer PA, Brixey CJ, Moncur JT, Fanburg-Smith JC, Murphey MD. Pathologic and MR imaging features of benign fibrous soft-tissue tumors in adults. *Radiographics* 2007;27:173-187
10. Murphey MD, Gross TM, Rosenthal HG. From the archives of the AFIP. Musculoskeletal malignant fibrous histiocytoma: radiologic-pathologic correlation. *Radiographics* 1994;14:807-826; quiz 827-808
11. Mahajan H, Kim EE, Wallace S, Abello R, Benjamin R, Evans HL. Magnetic resonance imaging of malignant fibrous histiocytoma. *Magn Reson Imaging* 1989;7:283-288
12. Kransdorf MJ, Meis JM, Montgomery E. Elastofibroma: MR and CT appearance with radiologic-pathologic correlation. *AJR Am J Roentgenol* 1992;159:575-579
13. Murphey MD, Smith WS, Smith SE, Kransdorf MJ, Temple MT. From the archives of the AFIP. Imaging of musculoskeletal neurogenic tumors: radiologic-pathologic correlation. *Radiographics* 1999;19:1253-1280
14. Llauger J, Palmer J, Monill JM, Franquet T, Bagué S, Rosón N. MR imaging of benign soft-tissue masses of the foot and ankle. *Radiographics* 1998;18:1481-1498
15. Hassell DS, Bancroft LW, Kransdorf MJ, et al. Imaging appearance of diffuse neurofibroma. *AJR Am J Roentgenol* 2008;190: 582-588
16. Llauger J, Palmer J, Roson N, Cremades R, Baque S. Pigmented villonodular synovitis and giant cell tumors of the tendon sheath: radiologic and pathologic features. *AJR Am J Roentgenol* 1999;172:1087-1091
17. Sheldon PJ, Forrester DM, Learch TJ. Imaging of intraarticular masses. *Radiographics* 2005;25:105-119
18. Murphey MD, Vidal JA, Fanburg-Smith JC, Gajewski DA. Imaging of synovial chondromatosis with radiologic-pathologic correlation. *Radiographics* 2007;27:1465-1488
19. Kransdorf MJ, Meis JM, Jelinek JS. Myositis ossificans: MR appearance with radiologic-pathologic correlation. *AJR Am J Roentgenol* 1991;157:1243-1248
20. Parikh J, Hyare H, Saifuddin A. The imaging features of post-traumatic myositis ossificans, with emphasis on MRI. *Clin Radiol* 2002;57:1058-1066
21. De Beuckeleer LH, De Schepper AM, Neetens I. Magnetic resonance imaging of pilomatricoma. *Eur Radiol* 1996;6:72-75

22. Lee SH, Suh JS, Lim BI, Yang WI, Shin KH. Intravascular papillary endothelial hyperplasia of the extremities: MR imaging findings with pathologic correlation. *Eur Radiol* 2004;14:822-826

23. Clifford PD, Temple HT, Jorda M, Marecos E. Intravascular papillary endothelial hyperplasia (Masson's tumor) presenting as a triceps mass. *Skeletal Radiol* 2004;33:421-425

24. Murphey MD, Fairbairn KJ, Parman LM, Baxter KG, Parsa MB, Smith WS. From the archives of the AFIP. Musculoskeletal angiomatous lesions: radiologic-pathologic correlation. *Radiographics* 1995;15:893-917

25. Vilanova JC, Barcelo J, Smirniotopoulos JG, et al. Hemangioma from head to toe: MR imaging with pathologic correlation. *Radiographics* 2004;24:367-385

26. Jones BC, Sundaram M, Kransdorf MJ. Synovial sarcoma: MR imaging findings in 34 patients. *AJR Am J Roentgenol* 1993;161:827-830

27. Nakanishi K, Araki N, Yoshikawa H, Hashimoto T, Nakamura H. Alveolar soft part sarcoma. *Eur Radiol* 1998;8:813-816

28. Hong SH, Chung HW, Choi JY, Koh YH, Choi JA, Kang HS. MRI findings of subcutaneous epidermal cysts: emphasis on the presence of rupture. *AJR Am J Roentgenol* 2006;186:961-966

29. Ruzek KA, Wenger DE. The multiple faces of lymphoma of the musculoskeletal system. *Skeletal Radiol* 2004;33:1-8

30. ter Braak BP, Guit GL, Bloem JL. Case 111: Soft-tissue lymphoma. *Radiology* 2007;243:293-296

31. Boukobza M, Mazel C, Touboul E. Primary vertebral and spinal epidural non-Hodgkin's lymphoma with spinal cord compression. *Neuroradiology* 1996;38:333-337

대한자기공명의과학회지 18:279-289(2014)

T2강조영상에서 저신호강도를 보이는 연부 조직 종양: 병리소견과의 비교

¹부산대학교병원 영상의학과
²부산대학교병원 병리과
³영남대학교병원 영상의학과
⁴계명대학교 동산의료원 영상의학과
⁵대구카톨릭 대학교병원 영상의학과
⁶부산대학교병원 정형외과

송유선¹ · 이인숙¹ · 최경운² · 조길호³ · 이성문⁴ · 이영환⁵ · 김정일⁶

목적: 본 연구는 T2 강조영상에서 저신호강도를 보이는 연부조직 종양의 특징적 자기공명영상 소견을 병리학적 소견과 연관지어 알아보려고 하였다.

결론: T2 강조영상에서 저신호강도를 보이는 드문 연부조직 종양의 종류에 대해 인지하고 동시에 특징적 위치, 모양, 다른 강조영상에서의 신호강도를 아는 것은 비특징적인 연부조직 종양의 감별진단에 도움이 되었다.

통신저자 : 이인숙, (602-739) 부산시 서구 아미동 1-10, 부산대학교병원 영상의학과
 Tel. (051) 240-7354 Fax. (051) 244-7534 E-mail: lis@pusan.ac.kr