

## Cardiovascular Safety Pharmacology of Sibutramine

Jaesuk Yun<sup>†</sup>, Eunyong Chung<sup>†</sup>, Ki Hwan Choi, Dae Hyun Cho, Yun Jeong Song, Kyoung Moon Han, Hey Jin Cha, Ji Soon Shin, Won-Keun Seong, Young-Hoon Kim and Hyung Soo Kim\*

National Institute of Drug and Safety Evaluation, Ministry of Food and Drug Safety, Osong 363-700, Republic of Korea

### Abstract

Sibutramine is an anorectic that has been banned since 2010 due to cardiovascular safety issues. However, counterfeit drugs or slimming products that include sibutramine are still available in the market. It has been reported that illegal sibutramine-contained pharmaceutical products induce cardiovascular crisis. However, the mechanism underlying sibutramine-induced cardiovascular adverse effect has not been fully evaluated yet. In this study, we performed cardiovascular safety pharmacology studies of sibutramine systemically using by hERG channel inhibition, action potential duration, and telemetry assays. Sibutramine inhibited hERG channel current of HEK293 cells with an  $IC_{50}$  of 3.92  $\mu$ M in patch clamp assay and increased the heart rate and blood pressure (76  $\Delta$ bpm in heart rate and 51  $\Delta$ mmHg in blood pressure) in beagle dogs at a dose of 30 mg/kg (per oral), while it shortened action potential duration (at 10  $\mu$ M and 30  $\mu$ M, resulted in 15% and 29% decreases in  $APD_{50\%}$  and 9% and 17% decreases in  $APD_{90\%}$ , respectively) in the Purkinje fibers of rabbits and had no effects on the QTc interval in beagle dogs. These results suggest that sibutramine has a considerable adverse effect on the cardiovascular system and may contribute to accurate drug safety regulation.

**Key Words:** Anorectic, Sibutramine, QT prolongation, Beagle dogs

### INTRODUCTION

Sibutramine, an anti-obesity drug, is a centrally acting serotonin-norepinephrine reuptake inhibitor structurally related to amphetamines (Heal *et al.*, 1998). Sibutramine has been reported to increase cardiovascular disease potential (James *et al.*, 2010) and has been withdrawn from the market in the United States, the European Union, and the Republic of Korea in 2010. Despite the official ban of sibutramine, illicit products containing sibutramine are available in many countries, possibly resulting in significant toxicities and even mortality (Muller *et al.*, 2009; Tang *et al.*, 2011; Heo and Kang, 2013). The Sibutramine Cardiovascular and Diabetes Outcome Study (SCOUT) showed that long-term treatment (for 5 years) with sibutramine (10-15 mg/day) exposed subjects with pre-existing cardiovascular disease to a significantly increased risk for nonfatal myocardial infarction and nonfatal stroke, but not cardiovascular death or all-cause mortality (James *et al.*, 2010). However, QT prolongation, a prolonged interval from the beginning of the QRS complex to the end of the T wave of

an electrocardiogram (ECG), an arrhythmia-associated effect induced by sibutramine is not well elucidated yet. In this study, we evaluated the cardiovascular safety of sibutramine with *in vitro* and *in vivo* models, which included human ether-a-go-go-related gene (hERG) assessment using whole-cell patch clamp electrophysiology techniques, action potential duration (APD) assessment using Purkinje fibers, and a telemetry study in freely moving animals (beagle dogs).

### MATERIALS AND METHODS

#### Animals and reagents

All animal procedures were approved by the committee on laboratory animal use (06141MFDS471) and performed in Association for Assessment and Accreditation of Laboratory Animal Care (AAALAC)-accredited facilities conforming to the guidelines for care and use of laboratory animals provided by the Korean Ministry of Food and Drug Safety. Animals were housed in a temperature-controlled room at  $22 \pm 2^\circ\text{C}$  with a

**Open Access** <http://dx.doi.org/10.4062/biomolther.2015.033>

This is an Open Access article distributed under the terms of the Creative Commons Attribution Non-Commercial License (<http://creativecommons.org/licenses/by-nc/4.0/>) which permits unrestricted non-commercial use, distribution, and reproduction in any medium, provided the original work is properly cited.

Received Mar 25, 2015 Revised Apr 22, 2015 Accepted Apr 27, 2015  
Published online Jul 1, 2015

#### \*Corresponding Author

E-mail: kimhs58@korea.kr  
Tel: +82-43-719-5201, Fax: +82-43-719-5200

<sup>†</sup>The first two authors contributed equally to this work.

12 h light/dark cycle (light on 0800 to 2000) and were given a solid diet and tap water *ad libitum*. All reagents were obtained from Sigma-Aldrich (St. Louis, MO, USA) unless otherwise specified.

### hERG assay

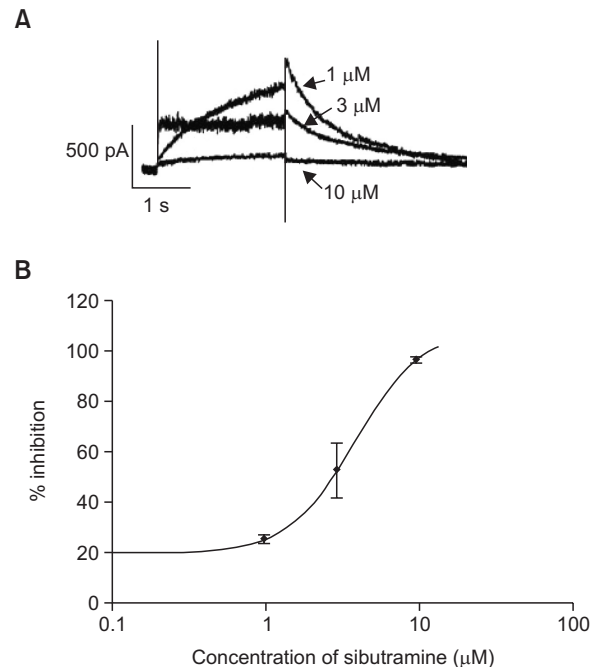
HEK-293 cells (CRL-1573, ATCC) were transfected with hERG cDNA (GenBank U04270, donated from the Department of Physiology, Seoul National University, Republic of Korea) with GFP cDNA in pcDNA3.1/Zeo plasmids using lipofectamine. hERG currents were recorded using a whole-cell patch clamp. Recording was performed with the Axopatch 200B amplifier and Digidata 1322A converter (Axon Instruments, USA). Recording electrodes were pulled from borosilicate glass with filament (GC150 TF-7.5; Clark Electromedical Instruments, UK) on a micropuller (Narishige, Japan). The internal solution contained 130 mM KCl, 1 mM MgCl<sub>2</sub>, 5 mM EGTA, 5 mM MgATP, and 10 mM HEPES adjusted to pH 7.2. The extracellular solution was a normal tyrode solution adjusted to pH 7.4 that contained 143 mM NaCl, 5.4 mM KCl, 5.0 mM HEPES, 0.33 mM NaH<sub>2</sub>PO<sub>4</sub>, 0.5 mM MgCl<sub>2</sub>, 16.6 mM glucose, and 1.8 mM CaCl<sub>2</sub>. The voltage step protocol (see Supplementary Fig. 1) was as follows: holding at -80 mV (resting potential), followed by an increase from -60 mV to +40 mV via 10-mV increments (step pulse, 0.1 Hz), and a step-down to -60 mV. To assess the inhibitory effect of sibutramine (sibutramine-HCl, 99.72%; LKT Laboratories, Shenzhen, China) on the hERG channel current, we measured the tail current by a single pulse protocol (-80 mV potential holding step through a 2-s +20 mV depolarization step and a 3-s -60 mV repolarization step) from visually identified GFP-positive cells (about 60% of transfection efficiency) under a fluorescence microscope (Axovision, Carl zeiss, Germany). Data from samples (n=3) were collected and analyzed with the Notocord program (NOTOCORD Inc., France).

### APD assay

New Zealand white rabbits (male, 1.7-2.0 kg, Laboratory animal resources division, National Institute of Food and Drug Safety Evaluation) were sacrificed and Purkinje fibers of the left ventricle were placed in the normal tyrode solution and equilibrated for 2 h (O<sub>2</sub> saturation at 37°C) at 1 Hz, 2 ms (1.5 times the threshold stimulation value). A microelectrode (20 MΩ, 3 M KCl filling) was inserted and the membrane potential was adjusted to -80 mV. Stimulus (1.3-2V, 2 ms, 1 Hz) was supplied at 37 ± 1°C through flow. After equilibration for 1 h, action potential changes induced by sibutramine treatment (20 min) were measured and analyzed with the Notocord program. Action potential duration upon 50% repolarization (APD<sub>50</sub>), action potential duration upon 90% repolarization (APD<sub>90</sub>), resting membrane potential (RMP), total amplitude (TA), and Vmax were measured 30 times immediately before treatment with a higher concentration of sibutramine, as described previously (Seop Kim *et al.*, 2006).

### Telemetry

*Canis familiaris* (beagle dogs, n=4, male, ~9.0 kg, Laboratory animal resources division, National Institute of Food and Drug Safety Evaluation) underwent surgery and implantation of a transmitter (TL11M2-70-CT type, Data Science International, USA) as described previously (Kim *et al.*, 2005). The telemetry study followed a crossover design in which four



**Fig. 1.** Effect of sibutramine on hERG currents expressed in HEK 293 cells. HEK 293 cells were transfected transiently with hERG plasmid. (A) Shows representative current traces recorded in sibutramine-treated cell. (B) Shows the dose-response relationships for the hERG tail current block. Data are expressed as mean ± S.E. (n=3).

male beagle dogs were given a single oral dose of either the vehicle or one of four dose levels of sibutramine: 1, 3, 10, or 30 mg/kg. A washout period of at least 72 h was maintained between each dose and for all animals. The effects of sibutramine administration on blood pressure, heart rate, and QT interval were measured for 10 min at 1-h intervals over a 24-h period with the DataQuest software package (Data Sciences International, MN, USA) in conscious beagle dogs.

### Statistics

Statistical analyses were performed using SigmaStat 3.1 software (Systat Software, Inc., Chicago, IL, USA). One-way analysis of variance (ANOVA) followed by Dunnett's test or repeated measures ANOVA followed by Bonferroni's test were used for multigroup comparisons.

## RESULTS

### hERG assay

The hERG encodes the pore-forming protein KCNH2, which is thought to represent the α-subunits of the human potassium channels responsible for IKr. The most common mechanism of QT prolongation is the blockage of this ion channel. The concentration-dependent inhibition of IKr in hERG-transfected HEK293 cells by sibutramine is shown in Fig. 1. The hERG current was inhibited by 25.26 ± 1.71%, 52.62 ± 10.92%, and 96.51 ± 1.38% at 1 μM, 3 μM, and 10 μM, respectively, with an IC<sub>50</sub> of 3.92 μM (Hillslope: 1.9768).

**Table 1.** Concentration-dependent effects of sibutramine on APD recorded from rabbit Purkinje fibers

Concentration	Sibutramine				
	APD <sub>50</sub> (msec)	APD <sub>90</sub> (msec)	RMP (mV)	V <sub>max</sub> (V/s)	TA (mV)
Control	241.41 ± 8.65	311.41 ± 7.19	-81.79 ± 2.16	363.55 ± 18.99	114.55 ± 2.50
1 μM	233.77 ± 7.23	304.61 ± 6.04	-81.39 ± 1.84	370.36 ± 19.66	115.37 ± 2.12
10 μM	206.00 ± 3.01*	283.61 ± 3.24*	-82.15 ± 1.89	367.82 ± 19.08	115.69 ± 0.99
30 μM	172.20 ± 5.39**	258.98 ± 2.34**	-78.65 ± 1.52	337.75 ± 22.80	111.92 ± 3.16

Data are expressed as mean ± SE (\* $p < 0.05$ , \*\* $p < 0.01$ , ANOVA followed by Dunnett's test,  $n = 3$ ). RMP, resting membrane potential; V<sub>max</sub>, maximal upstroke velocity of phase 0; TA, total amplitude.

**Table 2.** Cardiovascular parameters in each dog

	Dog 1	Dog 2	Dog 3	Dog 4	Mean ± S.E.
PR-Interval (ms)	86.24	88.67	87.49	90.53	88.23 ± 0.91
QRS-Interval (ms)	32.57	30.35	32.93	29.66	31.38 ± 0.81
QT-Interval (ms)	100.05	86.88	67.69	101.92	89.14 ± 7.89
RR-Interval (ms)	401.41	444.19	425.61	424.66	423.97 ± 8.76
QTcB	157.91	130.36	103.76	156.40	137.11 ± 12.79
QTcF	135.22	113.56	89.73	135.21	118.43 ± 10.84
Core Temperature (°C)	37.62	37.39	35.55	36.76	36.83 ± 0.46
Heart rate (bpm)	91.55	83.14	80.39	92.69	86.94 ± 3.05
Mean Pressure (mmHg)	99.41	88.68	91.38	108.70	97.04 ± 4.50

Baseline values of ECG interval, hemodynamic parameters and core body temperature of normal freely moving beagle dogs by remote radiotelemetry (QTcB: Bazett's correction; QT/(RR/1000)<sup>0.5</sup>, QTcF: Fridericia's correction; QT/(RR/1000)<sup>0.33</sup>).

### APD assay

In addition to the hERG assay, we performed the APD assay, which can elucidate cellular mechanisms affecting repolarization. In the left ventricular Purkinje fibers of rabbit, sibutramine decreased APD<sub>50</sub> and APD<sub>90</sub> at 10 μM and 30 μM without influencing the total amplitude, resting membrane potential, and V<sub>max</sub> (Table 1).

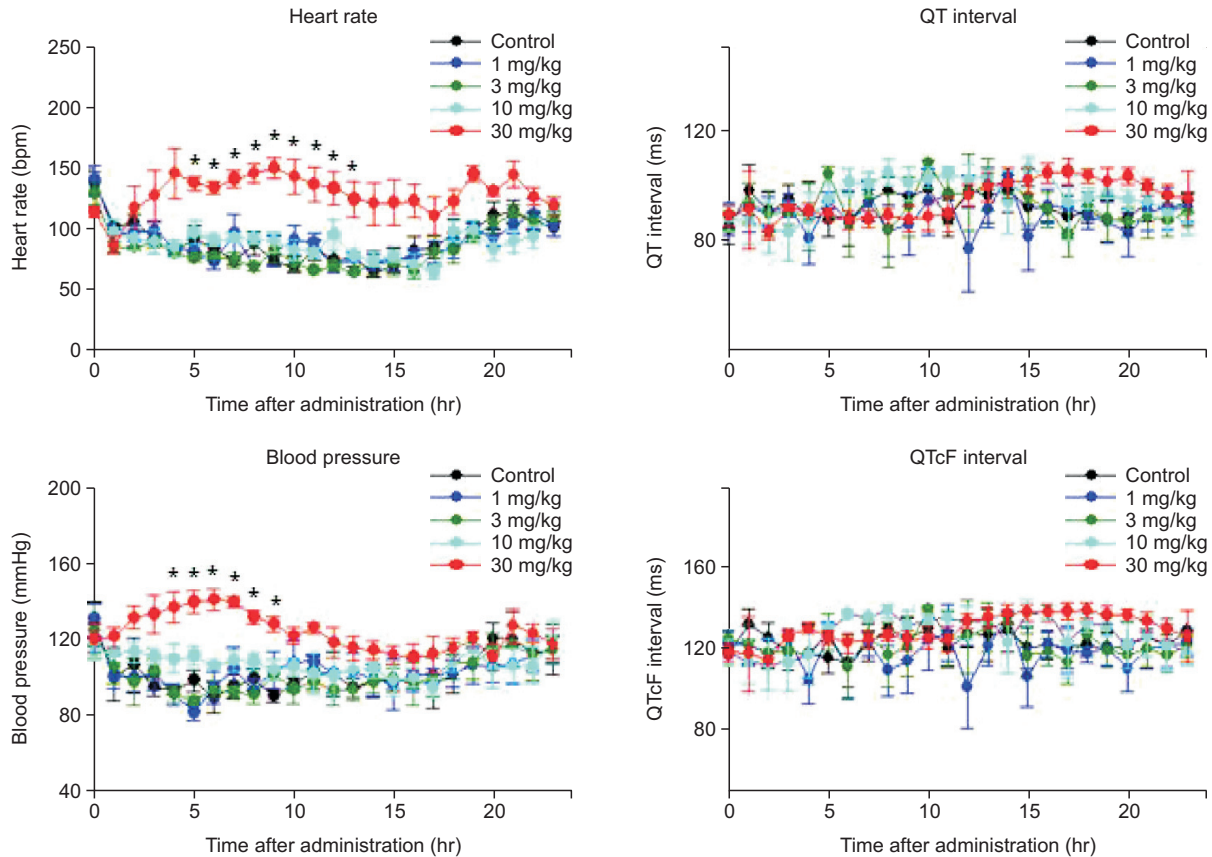
### Telemetry

Telemetry assay was performed in freely moving animals (conscious dogs) to determine whether ventricular repolarization or associated arrhythmias occurred due to integrated effects on the full complement of ion channels and cell types. Table 2 shows the baseline cardiovascular parameters in each dog. Following oral administration of sibutramine-filled gelatin capsules to conscious dogs followed by 24-h observation, there were no significant or biologically relevant changes in lead II ECG variables (RR, PR, QRS, QT, QTcF [corrected QT interval using Fridericia's formula; QT/RR<sup>0.33</sup>]). In contrast, the heart rate and mean blood pressure were significantly higher after administration of sibutramine (30 mg/kg) in comparison with that in the control group. In particular, the maximal effects of sibutramine on heart rate (76 Δbpm) and blood pressure (51 ΔmmHg) were observed at 9 h and 6 h after administration, respectively (Fig. 2).

## DISCUSSION

Sibutramine was reported to induce mania, panic attacks, and psychosis (Perrio *et al.*, 2007). Furthermore, sibutramine

was withdrawn from the U.S market and also from the EU and the Republic of Korea due to the risk of serious cardiovascular events. Recent studies reported that sibutramine present in counterfeit drugs and dietary supplements contributes to a safety issue; however, the association of QT prolongation with sibutramine is not clearly understood yet. We evaluated the possible mechanism underlying sibutramine-induced cardiovascular adverse effect. We demonstrated that sibutramine inhibited hERG potassium channels in an *in vitro* test system, while the APD assay in Purkinje fibers of rabbit showed that sibutramine induced a decrease in APD<sub>50</sub> and APD<sub>90</sub>. These results are consistent with previous report that showed APD shortening induced by sibutramine in guinea pig papillary muscle (Kim *et al.*, 2008). It is not surprised because a cardiac action potential is composed of different phases that are produced by the currents of Na<sup>+</sup>, Ca<sup>2+</sup>, and K<sup>+</sup>. We presumed that sibutramine has a weak QT prolongation and APD shortening effect due to mixed ion channel effects. In addition, the *in vivo* telemetry experiments revealed that an acute sibutramine administration may not have effects on QT prolongation. However, sibutramine, at 30 mg/kg, increased the heart rate and mean blood pressure in beagle dogs. Sibutramine is known to have a peripheral sympathomimetic effect, consequently this may affect hemodynamic parameters. In fact, a shortened APD may contribute to the changes of heart rate and blood pressure in beagle dogs, because APD and the refractory period decrease is essential for increase in the heart rate. Additional *in vivo* models that are designed to study possible risk factors (e.g. chronic administration and electrolyte imbalance) could be considered that might better reveal the basis of QT prolongation. In summary, our results suggest that sibutra-



**Fig. 2.** Effect of sibutramine on cardiovascular parameters in beagle dogs. The telemetry monitoring was performed following oral administration of sibutramine (1, 3, 10, and 30 mg/kg) in conscious beagle dogs. Data are expressed as mean  $\pm$  S.E. (\* $p$ <0.05 vs. control, repeated measures ANOVA followed by Bonferroni's test,  $n=4$ ).

mine is associated with cardiovascular risks reported previously (Scheen, 2010), even though we could not establish a causal relationship between QT prolongation and sibutramine. Furthermore, these results may contribute to the regulatory response to sibutramine safety issues.

## CONFLICTS OF INTEREST

The author declares no conflicts of interest.

## ACKNOWLEDGEMENTS

This study was supported by 06141MFDS471 of Ministry of Food and Drug Safety of Republic of Korea.

## REFERENCES

Heal, D. J., Aspley, S., Prow, M. R., Jackson, H. C., Martin, K. F. and Cheetham, S. C. (1998) Sibutramine: a novel anti-obesity drug. A review of the pharmacological evidence to differentiate it from d-amphetamine and d-fenfluramine. *Int. J. Obes. Relat. Metab. Disord.* **22**, S18-28.

Heo, S. H. and Kang, M. H. (2013) A case of dilated cardiomyopathy

with massive left ventricular thrombus after use of a sibutramine-containing slimming product. *Korean Circ. J.* **43**, 632-635.

James, W. P., Caterson, I. D., Coutinho, W., Finer, N., Van Gaal, L. F., Maggioni, A. P., Torp-Pedersen, C., Sharma, A. M., Shepherd, G. M., Rode, R. A., Renz, C. L. and Investigators, S. (2010) Effect of sibutramine on cardiovascular outcomes in overweight and obese subjects. *N. Engl. J. Med.* **363**, 905-917.

Kim, E. J., Seo, J. W., Hwang, J. Y. and Han, S. S. (2005) Effects of combined treatment with sildenafil and itraconazole on the cardiovascular system in telemetered conscious dogs. *Drug Chem. Toxicol.* **28**, 177-186.

Kim, K. S., Park, S. J., Lee, H. A., Kim, D. K. and Kim, E. J. (2008) Electrophysiological safety of sibutramine HCl. *Hum. Exp. Toxicol.* **27**, 553-558.

Muller, D., Weinmann, W. and Hermanns-Clausen, M. (2009) Chinese slimming capsules containing sibutramine sold over the Internet: a case series. *Dtsch. Arztebl. Int.* **106**, 218-222.

Perrio, M. J., Wilton, L. V. and Shakir, S. A. (2007) The safety profiles of orlistat and sibutramine: results of prescription-event monitoring studies in England. *Obesity* **15**, 2712-2722.

Scheen, A. J. (2010) Cardiovascular risk-benefit profile of sibutramine. *Am. J. Cardiovasc. Drugs* **10**, 321-334.

Seop Kim, D., Kim, K. S., Hwan Choi, K., Na, H., Kim, J. I., Shin, W. H. and Kim, E. J. (2006) Electrophysiological safety of novel fluoroquinolone antibiotic agents gemifloxacin and balofloxacin. *Drug Chem. Toxicol.* **29**, 303-312.

Tang, M. H., Chen, S. P., Ng, S. W., Chan, A. Y. and Mak, T. W. (2011) Case series on a diversity of illicit weight-reducing agents: from the well known to the unexpected. *Br. J. Clin. Pharmacol.* **71**, 250-253.