

# The Ratio-Based N Staging System Can More Accurately Reflect the Prognosis of T4 Gastric Cancer Patients with D2 Lymphadenectomy Compared with the 7th American Joint Committee on Cancer/Union for International Cancer Control Staging System

Sung Hwan Hwang, Hyun Il Kim, Jun Seong Song, Min Hong Lee, Sung Joon Kwon<sup>1</sup>, and Min Gyu Kim

Department of Surgery, Hanyang University Guri Hospital, Guri, <sup>1</sup>Department of Surgery, Hanyang University Seoul Hospital, Seoul, Hanyang University College of Medicine, Korea

**Purpose:** The utility of N classification has been questioned after the 7th edition of the American Joint Committee on Cancer (AJCC)/Union for International Cancer Control (UICC) was published. We evaluated the correlation between ratio-based N (rN) classification with the overall survival of pathological T4 gastric cancer patients who underwent D2 lymphadenectomy.

**Materials and Methods:** We reviewed 222 cases of advanced gastric cancer patients who underwent curative gastrectomy between January 2006 and December 2015. The T4 gastric cancer patients were classified into four groups according to the lymph node ratio (the number of metastatic lymph nodes divided by the retrieved lymph nodes): rN0, 0%; rN1,  $\leq 13.3\%$ ; rN2,  $\leq 40.0\%$ ; and rN3,  $>40.0\%$ .

**Results:** The rN stage showed a large down stage migration compared with pathological T4N3 (AJCC/UICC). There was a significant difference in overall survival between rN2 and rN3 groups in patients with pT4N3 ( $P=0.013$ ). In contrast, the difference in metastatic lymph nodes was not significant in these patients ( $\geq 16$  vs.  $< 15$ ;  $P=0.177$ ). In addition, the rN staging system showed a more distinct difference in overall survival than the pN staging system for pathological T4 gastric cancer patients.

**Conclusions:** Our results confirm that rN staging could be a good alternative for pathological T4 gastric cancer patients who undergo D2 lymphadenectomy. However, before applying this system to gastric cancer patients who undergo D2 lymphadenectomy, a larger sample size is required to further evaluate the usefulness of the rN staging system for all stages, including less advanced stages.

**Key Words:** Stomach neoplasms; Prognosis; TNM staging

## Introduction

The presence of lymph node metastasis is an important factor in determining the stage and prognosis of gastric cancer patients.<sup>1,2</sup> Therefore, meticulous lymph node dissection is essential

for staging gastric cancer patients.

The tumor node metastasis (TNM) system has been widely used as a method for staging gastric cancer patients. The 7th edition of the American Joint Committee on Cancer (AJCC)/Union for International Cancer Control (UICC) TNM classification was released in 2010.<sup>3</sup> According to this system, the N stage was classified into four pathologic stages (N0, N1, N2, and N3) based on the number of metastatic lymph nodes. However, at least 15 lymph nodes need to be harvested in order to apply this staging system.<sup>3,4</sup>

The total number of retrieved lymph nodes is influenced by

Correspondence to: Min Gyu Kim  
Department of Surgery, Hanyang University Guri Hospital, 153 Gyeongchun-ro, Guri 11923, Korea  
Tel: +82-31-560-2294, Fax: +82-31-566-4409  
E-mail: md9650@hanyang.ac.kr

Received August 31, 2016

Revised October 4, 2016

Accepted October 5, 2016

© This is an open-access article distributed under the terms of the Creative Commons Attribution Non-Commercial License (<http://creativecommons.org/licenses/by-nc/4.0>) which permits unrestricted noncommercial use, distribution, and reproduction in any medium, provided the original work is properly cited.

the extent of lymph node dissection.<sup>5,6</sup> The Japanese Gastric Cancer Association guidelines recommend D2 lymphadenectomy.<sup>7</sup> Unlike eastern surgeons, western surgeons prefer to not perform D2 lymphadenectomy because of the associated high morbidity and mortality. As a result, many western gastric cancer patients have fewer than 15 total lymph nodes retrieved.<sup>6,8</sup> Therefore, it has been suggested that the numeric concept of the 7th edition of the AJCC/UICC classification is not suitable in western countries.<sup>9,10</sup> For this reason, the proportion of metastatic lymph nodes to examined lymph nodes (lymph node ratio) has been proposed as an alternative prognostic factor by western surgeons.<sup>11-17</sup> Some surgeons have suggested that the lymph node ratio could be an alternative method to the established AJCC/UICC N classification. One report suggested that this ratio-based N (rN) staging classification could provide a more accurate estimation of overall survival without regard to the extent of lymph node dissection.<sup>12</sup>

In addition, the present AJCC/UICC classification has a problem of stage migration that appears to depend on the extent of lymphadenectomy.<sup>12,17-20</sup> It is assumed that this stage migration is due to the number of harvested lymph nodes. However, it is still uncertain whether a larger number of examined lymph nodes contributes to stage migration.

Therefore, in our study, we assessed the significance of the rN stage for the overall survival of our patients. We also evaluated whether rN stage with the elements of the numerical concept can more accurately classify N staging in gastric cancer patients.

## Materials and Methods

### 1. Patients

We retrospectively reviewed and prospectively collected data on 222 advanced gastric cancer patients who underwent curative gastrectomy with lymph node dissection between January 2006 and December 2015 at Hanyang University Guri Hospital. All patients underwent over D1+beta lymphadenectomy according to the Japanese gastric cancer treatment guidelines.<sup>7</sup> Laparoscopic gastrectomy was used for older patients and those with a high American Society of Anesthesiologist (ASA) score with the patients' consent.

### 2. Clinical analysis

Clinical data obtained from medical records included patient

age, sex, body mass index (kg/m<sup>2</sup>), ASA score, and other data. The operative characteristics and early surgical outcomes included operation method (laparoscopic vs. open surgery), extent of gastrectomy (total vs. subtotal gastrectomy), omentectomy (total vs. partial), combined resection of other organs, operation time, postoperative complications, postoperative mortality, adjuvant chemotherapy, and overall survival were collected. The ASA classification was determined by anesthesiologists a day before surgery. Postoperative complications were defined as any condition requiring conservative or surgical treatment.<sup>21</sup> Thirty-day mortality was used to measure postoperative mortality and it was defined as death within 30 days of the surgery. The overall survival was defined as the time from the operation to the date of the patient's death. Pathologic results were analyzed for tumor size, number of retrieved lymph nodes, and the 7th AJCC staging system score (pathologic T [pT] and pathologic N [pN]).<sup>3</sup>

In this study, we categorized our patients into 4 groups according to the lymph node ratio (the number of metastatic lymph nodes divided by the total number of retrieved lymph nodes, the rN stage). Our stratification reflected the 7th edition of the AJCC Cancer Staging (rN0, 0%; rN1 13.3%, 2/15; and rN2 40.0%, 6/15). As a result, our cut points were stratified into 4 grades (rN0, 0%; rN1, ≤13.3%; rN2, ≤40.0%; and rN3: >40.0%).

### 3. Statistical analysis

Statistical analysis was performed using IBM SPSS Statistics ver. 21 (IBM Co., Armonk, NY, USA). All values are expressed as means with standard deviation. Categorical variables were analyzed using the chi-square test and all continuous variables were analyzed with Student's t-test. Survival analysis was performed by Kaplan-Meier curves with log-rank tests for significance. A P-value<0.05 was considered statistically significant.

## Results

### 1. Clinical characteristics

The clinical characteristics of the 222 patients are shown in Table 1. The median age was 64.0 years. Men (71.6%) outnumbered women in this study population. Eighty-three patients (37.4%) underwent total gastrectomy. D2 lymphadenectomy was performed in most patients (90.5%). Fifty-two patients (23.4%) underwent combined resection of another organ and 77 patients (34.7%) underwent laparoscopic gastrectomy. The mean opera-

**Table 1. Clinical characteristics of advanced gastric cancer patients who underwent curative surgery**

Clinical characteristic	Value
Age (yr)	64.0 (35~88)
Sex	
Male	159 (71.6)
Female	63 (28.4)
Body mass index (kg/m <sup>2</sup> )	23.1±3.3
<25	155 (69.8)
≥25	67 (30.2)
ASA score	
ASA 1	29 (13.1)
ASA 2	132 (59.5)
Over ASA 3	61 (27.5)
History of upper gastrointestinal surgery	18 (8.1)
Extent of gastrectomy	
Total gastrectomy	83 (37.4)
Distal gastrectomy	139 (62.6)
Extent of lymph node dissection*	
D1+beta	21 (9.5)
D2	201 (90.5)
Extent of omentectomy	
Total omentectomy	198 (89.2)
Partial omentectomy	24 (10.8)
Combined resection of other organs	52 (23.4)
Surgical method	
Open	145 (65.3)
Laparoscopy	77 (34.7)
Operation time (min)	212.5±66.0
Postoperative complication	41 (18.5)
Postoperative mortality (within 30 day)	0
Postoperative hospital stay (d)	17.8±9.7

Values are presented as median (range), number (%), or mean±standard deviation. ASA = American Society of Anesthesiologist. \*Classification according to the Japanese Gastric Cancer Association guidelines.

tion time was 212.5 minutes. Postoperative complications occurred in 41 patients (18.5%). There was no postoperative mortality in these patients.

## 2. Pathological characteristics

Table 2 shows the pathological characteristics of the patients. More than half of the patients had pT4 stage (55.0%) based on the 7th edition of AJCC/UICC. Less than half of the patients

**Table 2. Pathological characteristics of advanced gastric cancer patients who underwent curative surgery**

Pathological characteristic	Value
T classification*	
T2	58 (26.1)
T3	42 (18.9)
T4	122 (55.0)
N classification*	
N0	59 (26.6)
N1	33 (14.9)
N2	35 (15.8)
N3	95 (42.8)
TNM stage*	
Stage I	35 (15.8)
Stage II	51 (23.0)
Stage III	136 (61.3)
Tumor size (cm)	5.9±3.6
No. of retrieved lymph nodes	42.5 (7~115)
>16	218 (98.2)
≤15	4 (1.8)
Histologic differentiation	
Differentiated	96 (43.2)
Undifferentiated	126 (56.8)

Values are presented as number (%), mean±standard deviation, or median (range). \*Classification according to the American Joint Committee on Cancer 7th edition.

had pN3 stage (42.8%). The median number of retrieved lymph nodes was 42.5 (7~115). The majority of this study population (all except for four patients, 1.8%) had over 16 total retrieved lymph nodes.

## 3. Discordant correlation between pathologic N and ratio-based N in pathologic T4 gastric cancer patients

Based on the analyses that are shown in Table 3, the lymph node ratio for metastatic lymph nodes showed a large difference between the pN2 and pN3 groups. When using the rN stage for pN2 and pN3 patients, a downgrading of stage was observed in more than half of the patients.

## 4. Comparison of pathologic T4N3 (Stage IIIc) gastric cancer patients according to the ratio-based N stage

Table 4 shows clinico-pathological characteristics between pT4rN2pN3 and pT4rN3pN3 gastric cancer patients. The 5-year overall survival (5-OS; 42.9% vs. 11.8%; P=0.013) was clearly

**Table 3. Correlation between pN stage and rN stage in pathologic T4 advanced gastric cancer patients**

Variable	pN0 group* (n=11)	pN1 group* (n=15)	pN2 group* (n=18)	pN3 group* (n=78)
rN0 group <sup>†</sup> (0%, n=37)	11	-	-	-
rN1 group <sup>†</sup> (>0%, ≤13.3%, n=19)	-	14	11	2
rN2 group <sup>†</sup> (>13.3%, ≤40.0%, n=28)	-	1	7	41
rN3 group <sup>†</sup> (>40.0%, n=16)	-	-	-	35

Values are presented as number only. pN = pathologic N; rN = ratio-based N. \*Classification according to the Union for International Cancer Control/American Joint Committee on Cancer 7th edition. <sup>†</sup>According to the ratio of metastatic lymph nodes.

**Table 4. Comparison of pT4N3 (Stage IIIc) gastric cancer patients according to ratio-based stage**

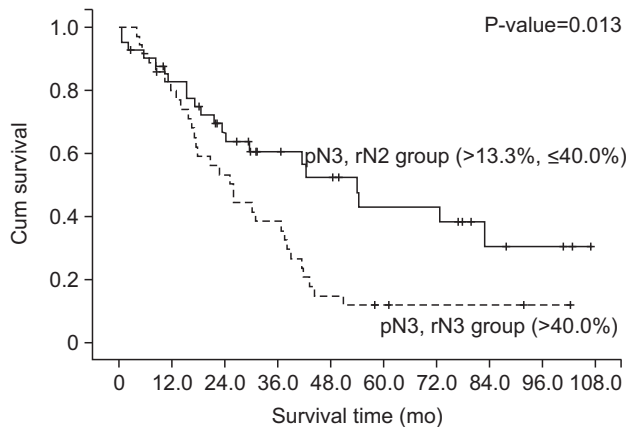
Variable	rN2pN3 group* (n=41)	rN3pN3 group* (n=35)	P-value
5-year overall survival rate (mo)	42.9% (54.2)	11.8% (26.0)	0.013
Age (yr)	59.5±11.9	63.7±11.3	0.127
Sex			0.566
Male	28 (68.3)	26 (74.3)	
Female	13 (31.7)	9 (25.7)	
Body mass index (kg/m <sup>2</sup> )	22.4±3.2	22.7±3.1	0.719
Extent of lymphadenectomy <sup>†</sup>			
<D2	-	-	
≥D2	41	35	
Surgical method			0.859
Open	37 (90.2)	32 (91.4)	
Laparoscopy	4 (9.8)	3 (8.6)	
Extent of gastrectomy			0.033
Total	22 (53.7)	27 (77.1)	
Subtotal	19 (46.3)	8 (22.9)	
Extent of omentectomy			0.113
Total	39 (95.1)	35 (100.0)	
Subtotal	2 (4.9)	-	
T classification <sup>‡</sup>			0.518
T4a	39 (95.1)	32 (91.4)	
T4b	2 (4.9)	3 (8.6)	
N classification <sup>‡</sup>			<0.001
N3a	31 (75.6)	4 (11.4)	
N3b	10 (24.4)	31 (88.6)	
Differentiation			0.093
Well differentiated	14 (34.1)	6 (17.1)	
Undifferentiated	27 (65.9)	29 (82.9)	
Lymphatic invasion			0.264
Yes	40 (97.6)	35 (100.0)	
Vascular invasion			0.061
Yes	35 (85.4)	34 (97.1)	
Combined resection of other organs	14 (34.1)	12 (34.3)	0.990
Number of retrieved lymph nodes	53.2±21.5	50.1±19.0	0.523
Retrieved lymph nodes	51 (25~115)	47 (22~109)	
Tumor size (cm)	6.1±2.2	9.8±4.8	<0.001
No. of metastatic lymph nodes	11 (7~36)	28 (11~51)	<0.001
Adjuvant chemotherapy	32 (78.0)	28 (80.0)	0.835

Values are presented as percent (median), mean±standard deviation, number (%), or median (range). pT = pathologic T; pN = pathologic N; rN = ratio-based N. \*According to the ratio of metastatic lymph nodes. <sup>†</sup>Classification according to the Japanese Gastric Cancer Association guidelines. <sup>‡</sup>Classification according to the American Joint Committee on Cancer 7th edition.

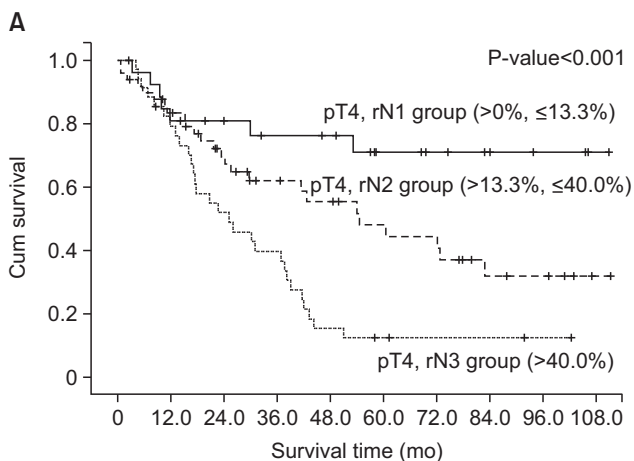
different between the two groups. There were significant differences in the extent of gastrectomy (53.7% vs. 77.1%), tumor size (6.1 cm vs. 9.8 cm;  $P < 0.001$ ), N classification, and median number of metastatic lymph nodes (11 vs. 28;  $P < 0.001$ ). The two groups showed significant differences in overall survival ( $P = 0.013$ ; Fig. 1).

### 5. Overall survival of pathologic T4 gastric cancer patients according to the pathologic N and ratio-based N stage

As shown in Fig. 2, the survival curves based on rN classifications (5-OS; rN1 vs. rN2 vs. rN3, 70.8% vs. 48.0% vs. 12.2%;  $P < 0.001$ ) had a clearer distinction than those based on the pN classifications (pN1 vs. pN2 vs. pN3, 82.5% vs. 64.8% vs. 27.2%;  $P = 0.002$ ).



**Fig. 1.** Survival curves of pT4pN3 gastric cancer patients according to the ratio-based N staging system (rN2 vs. rN3 groups). pT = pathologic T; pN = pathologic N; rN = ratio-based N.

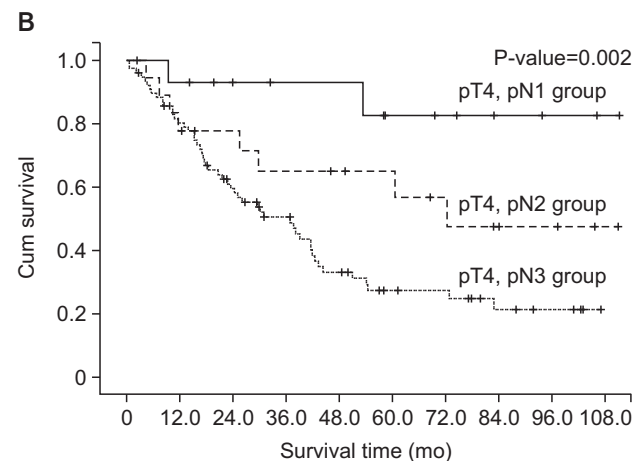


## Discussion

Accurate stage assessment is very important in prognostication and developing a treatment plan in gastric cancer patients. The 7th edition of the AJCC/UICC was released in 2010.<sup>3</sup> Based on this system, the N stage is classified by the number of metastatic lymph nodes. However, more than 15 lymph nodes need to be harvested to apply this system, because of the possibility of down staging.<sup>3,4</sup> Therefore, this numeric concept about the number of metastatic lymph nodes is difficult to use for gastric cancer patients with less than 15 retrieved lymph nodes.<sup>9,10</sup>

D2 lymphadenectomy is not often performed in western countries because of the associated high morbidity and mortality. Some western surgeons have suggested that extensive lymph node dissection does not improve overall survival.<sup>22,23</sup> As a result, there is a large difference in the total number of retrieved lymph nodes between Asian and western countries.<sup>6,8,19</sup> Therefore, many western surgeons raised concerns about the 7th edition of AJCC/UICC because of the down-staging of their patients.<sup>9,10,17</sup> They suggested that the lymph node ratio for metastatic lymph nodes could predict a more precise tumor stage for overall survival in their patients with fewer than 15 dissected lymph nodes.<sup>12,14,15</sup> In other words, many western studies have documented that the lymph node ratio is an independent prognostic factor that is not influenced by differences in the extent of lymph node dissection.

The total number of retrieved lymph nodes is affected by the extent of lymph node dissection.<sup>5,6</sup> Although the effect of the total number of retrieved lymph nodes on overall survival is still a controversial subject, some study authors have suggested that



**Fig. 2.** (A) Survival curves of pT4 gastric cancer patients according to the rN staging system. (B) Survival curves of pT4 gastric cancer patients according to the 7th American Joint Committee on Cancer/Union for International Cancer Control on Cancer staging system. pT = pathologic T; rN = ratio-based N; pN = pathologic N.

dissecting a greater number of lymph nodes can improve overall survival of gastric cancer patients.<sup>24,25</sup> We believe that the lymph node ratio for metastatic lymph nodes could be a good alternative method to accurately evaluate staging, regardless of the total number of dissected lymph nodes.

However, in order to apply this ratio-based staging system in Asian countries, the cutoff levels need to be downgraded because of the large number of retrieved lymph nodes (total lymph nodes including negative lymph nodes). Our study found that almost all patients (98.2%) had more than 16 retrieved lymph nodes. Therefore, we applied the numeric concept of the 7th edition of AJCC/UICC system to our present study without using the previous cutoffs of western studies. We classified the rN stage into 4 categories (rN0 stage 0%; rN1 stage >0%, ≤13.3%; rN2 stage >13.3%, ≤40.0%; and rN3 stage >40.0%) by dividing pN (pN1 stage 2, pN2 6, and pN3 7) by the minimum number of lymph nodes, 15. As a result, we could achieve a lower cut-off value than that of the previous study.<sup>15</sup>

To explore the differences between pN and rN stages, gastric cancer patients with pT4 stage were reclassified according to their rN stages. Based on our results, over half of the pN2 and pN3 patients were downgraded from their original pN stages. We also confirmed that the simple numeric concept of the AJCC/UICC system does not accurately reflect the stage of pT4pN3 gastric cancer patients. There was a clear difference in the overall survival curve between the rN2 and rN3 groups in these patients (P=0.013). The rN3 group had poor overall survival, a higher rate of total gastrectomy, and a larger mean tumor size compared to patients in the rN2 group. In the comparison of the overall survival curves according to the pN and rN stages of pT4 gastric cancer patients, the rN stages also showed a clearer discrimination. Although our study did not show better survival outcomes in the lower stages of the pT4 gastric cancer patients, a previous study demonstrated that a good staging system must reflect decreased survival of patients with higher stages. That finding and the current study supports the idea that the pT4pN3 stage should be split into rN2 and rN3 classifications.<sup>26</sup>

After release of the 7th edition of the AJCC/UICC, many investigators have criticized the N classification system. Our results have confirmed that the present AJCC/UICC system has a serious issue with classification of accurate N staging. We also found that we had overestimated our patients' pN stages when using the 7th AJCC/UICC system. Although we confirmed that the lymph node ratio could be a good alternative method to decrease

the possibility of stage migration, we still have some outstanding issues to resolve before applying the rN staging system in clinical practice. Although some western studies have documented that their cutoffs have significance for overall survival,<sup>15</sup> it is very difficult to apply these cutoffs in Asian countries because of the differences in lymph node dissection. We believe that the difference in the number of retrieved lymph nodes should be considered in the next staging system. Therefore, an optimal Asian cutoff needs to be identified for use with different ethnic populations, one that is based on the extent of lymph node dissection.

This retrospective study has some limitations in the analysis of accurate rN stages. The system needs to reflect the better survival outcomes in the lower stage groups of pT4 gastric cancer patients. In addition, a study at multiple institutions with a larger patient cohort is needed to confirm the accuracy of the rN staging system in gastric cancer patients. In addition, we could not analyze patients at lower stages because of the small sample size. Therefore, we believe that a larger sample size is necessary to evaluate the impact of rN stages on overall survival of gastric cancer patients with less advanced stages (stage I, and II).

In conclusion, we have confirmed that the rN staging system can be a good alternative to the present AJCC/UICC staging system for pT4 gastric cancer patients. However, new cut-off values should be identified before applying this system to most Asian hospitals with a tendency to perform extensive lymph node dissection. Analysis of a larger group of patients is also needed to evaluate the impact of the rN staging system on less advanced stages.

## Conflicts of Interest

No potential conflict of interest relevant to this article was reported.

## References

1. Tóth D, Török M, Kincses Z, Damjanovich L. Prospective, comparative study for the evaluation of lymph node involvement in gastric cancer: Maruyama computer program versus sentinel lymph node biopsy. *Gastric Cancer* 2013;16:201-207.
2. Mishima Y, Hirayama R. The role of lymph node surgery in gastric cancer. *World J Surg* 1987;11:406-411.
3. Washington K. 7th edition of the AJCC cancer staging manual:

- stomach. *Ann Surg Oncol* 2010;17:3077-3079.
4. Ajani JA, Bentrem DJ, Besh S, D'Amico TA, Das P, Denlinger C, et al. Gastric cancer, version 2.2013: featured updates to the NCCN guidelines. *J Natl Compr Canc Netw* 2013;11:531-546.
  5. Smith DD, Schwarz RR, Schwarz RE. Impact of total lymph node count on staging and survival after gastrectomy for gastric cancer: data from a large US-population database. *J Clin Oncol* 2005;23:7114-7124.
  6. Putchakayala K, Difronzo LA. D2 lymph node dissection improves staging in patients with gastric adenocarcinoma. *Am Surg* 2011;77:1326-1329.
  7. Japanese Gastric Cancer Association. Japanese gastric cancer treatment guidelines 2010 (ver. 3). *Gastric Cancer* 2011;14:113-123.
  8. Krijnen P, den Dulk M, Meershoek-Klein Kranenbarg E, Jansen-Landheer ML, van de Velde CJ. Improved survival after resectable non-cardia gastric cancer in The Netherlands: the importance of surgical training and quality control. *Eur J Surg Oncol* 2009;35:715-720.
  9. Patel MI, Rhoads KF, Ma Y, Ford JM, Visser BC, Kunz PL, et al. Seventh edition (2010) of the AJCC/UICC staging system for gastric adenocarcinoma: is there room for improvement? *Ann Surg Oncol* 2013;20:1631-1638.
  10. Reim D, Loos M, Vogl F, Novotny A, Schuster T, Langer R, et al. Prognostic implications of the seventh edition of the international union against cancer classification for patients with gastric cancer: the Western experience of patients treated in a single-center European institution. *J Clin Oncol* 2013;31:263-271.
  11. Nitti D, Marchet A, Olivieri M, Ambrosi A, Mencarelli R, Belluco C, et al. Ratio between metastatic and examined lymph nodes is an independent prognostic factor after D2 resection for gastric cancer: analysis of a large European monoinstitutional experience. *Ann Surg Oncol* 2003;10:1077-1085.
  12. Marchet A, Mocellin S, Ambrosi A, Morgagni P, Garcea D, Marrelli D, et al. The ratio between metastatic and examined lymph nodes (N ratio) is an independent prognostic factor in gastric cancer regardless of the type of lymphadenectomy: results from an Italian multicentric study in 1853 patients. *Ann Surg* 2007;245:543-552.
  13. Asoglu O, Karanlik H, Parlak M, Kecer M, Muslumanoglu M, Igci A, et al. Metastatic lymph node ratio is an independent prognostic factor in gastric cancer. *Hepatogastroenterology* 2009;56:908-913.
  14. Lemmens VE, Dassen AE, van der Wurff AA, Coebergh JW, Bosscha K. Lymph node examination among patients with gastric cancer: variation between departments of pathology and prognostic impact of lymph node ratio. *Eur J Surg Oncol* 2011;37:488-496.
  15. Wang J, Dang P, Raut CP, Pandalai PK, Maduekwe UN, Rattner DW, et al. Comparison of a lymph node ratio-based staging system with the 7th AJCC system for gastric cancer: analysis of 18,043 patients from the SEER database. *Ann Surg* 2012;255:478-485.
  16. Wong J, Rahman S, Saeed N, Lin HY, Almhanna K, Shridhar R, et al. Prognostic impact of lymph node retrieval and ratio in gastric cancer: a U.S. single center experience. *J Gastrointest Surg* 2013;17:2059-2066.
  17. Maduekwe UN, Lauwers GY, Fernandez-Del-Castillo C, Berger DL, Ferguson CM, Rattner DW, et al. New metastatic lymph node ratio system reduces stage migration in patients undergoing D1 lymphadenectomy for gastric adenocarcinoma. *Ann Surg Oncol* 2010;17:1267-1277.
  18. Lee HK, Yang HK, Kim WH, Lee KU, Choe KJ, Kim JP. Influence of the number of lymph nodes examined on staging of gastric cancer. *Br J Surg* 2001;88:1408-1412.
  19. Kong SH, Lee HJ, Ahn HS, Kim JW, Kim WH, Lee KU, et al. Stage migration effect on survival in gastric cancer surgery with extended lymphadenectomy: the reappraisal of positive lymph node ratio as a proper N-staging. *Ann Surg* 2012;255:50-58.
  20. Lee YC, Yang PJ, Zhong Y, Clancy TE, Lin MT, Wang J. Lymph node ratio-based staging system outperforms the seventh AJCC system for gastric cancer: validation analysis with national Taiwan university hospital cancer registry. *Am J Clin Oncol* 2014. doi: 10.1097/COC.000000000000110 [In press].
  21. Strasberg SM, Linehan DC, Hawkins WG. The accordion severity grading system of surgical complications. *Ann Surg* 2009;250:177-186.
  22. Hartgrink HH, van de Velde CJ, Putter H, Bonenkamp JJ, Klein Kranenbarg E, Songun I, et al. Extended lymph node dissection for gastric cancer: who may benefit? Final results of the randomized Dutch gastric cancer group trial. *J Clin Oncol* 2004;22:2069-2077.
  23. Cuschieri A, Weeden S, Fielding J, Bancewicz J, Craven J, Joypaul V, et al. Patient survival after D1 and D2 resections for gastric cancer: long-term results of the MRC randomized surgical trial. Surgical co-operative group. *Br J Cancer* 1999;79:1522-1530.

24. Giuliani A, Caporale A, Corona M, Di Bari M, Demoro M, Ricciardulli T, et al. Lymphadenectomy in gastric cancer: influence on prognosis of lymph node count. *J Exp Clin Cancer Res* 2004;23:215-224.
25. Hsu JT, Lin CJ, Sung CM, Yeh HC, Chen TH, Chen TC, et al. Prognostic significance of the number of examined lymph nodes in node-negative gastric adenocarcinoma. *Eur J Surg Oncol* 2013;39:1287-1293.
26. Rice TW, Rusch VW, Ishwaran H, Blackstone EH; Worldwide Esophageal Cancer Collaboration. Cancer of the esophagus and esophagogastric junction: data-driven staging for the seventh edition of the American Joint Committee on Cancer/International Union against Cancer Cancer staging manuals. *Cancer* 2010;116:3763-3773.