

# Initial Experiences of Extracorporeal Membrane Oxygenation for Trauma Patients at a Single Regional Trauma Center in South Korea

Ji Wool Ko, M.D.<sup>1,2</sup>, Il Hwan Park, M.D., Ph.D.<sup>3</sup>, Chun Sung Byun, M.D., Ph.D.<sup>3</sup>,  
Sung Woo Jang, M.D.<sup>1,2</sup>, Pil Young Jung, M.D., Ph.D.<sup>1,2</sup>

<sup>1</sup>Department of Surgery, Yonsei University Wonju College of Medicine, Wonju, Korea

<sup>2</sup>Regional Trauma Center, Wonju Severance Christian Hospital, Wonju, Korea

<sup>3</sup>Department of Thoracic Surgery, Yonsei University Wonju College of Medicine, Wonju, Korea

**Received:** November 24, 2020

**Revised:** December 4, 2020

**Accepted:** December 17, 2020

## Correspondence to

**Pil Young Jung, M.D., Ph.D.**

Department of Surgery, Yonsei University  
Wonju College of Medicine, 20 Ilsan-ro,  
Wonju 26426, Korea

Tel: +82-33-741-0573

Fax: +82-33-741-0574

E-mail: [surgery4trauma@yonsei.ac.kr](mailto:surgery4trauma@yonsei.ac.kr)

ORCID: <https://orcid.org/0000-0001-6460-8072>

6460-8072

**Purpose:** For severe lung injuries or acute respiratory distress syndrome that occurs during critical care due to trauma, extracorporeal membrane oxygenation (ECMO) may be used as a salvage treatment. This study aimed to describe the experiences at a single center with the use of ECMO in trauma patients.

**Methods:** We enrolled a total of 25 trauma patients who were treated with ECMO between January 2015 and December 2019 at a regional trauma center. We analyzed and compared patients' characteristics between survivors and non-survivors through a medical chart review. We also compared the characteristics of patients between direct and indirect lung injury groups.

**Results:** The mean age of the 25 patients was 45.9±19.5 years, and 19 patients (76.0%) were male. The mean Injury Severity Score was 26.1±10.1. Ten patients (40.0%) had an Abbreviated Injury Scale (AIS) 3 score of 4, and six patients (24.0%) had an AIS 3 score of 5. There were 19 cases (76.6%) of direct lung injury. The mortality rate was 60.0% (n=15). Sixteen patients (64.0%) received a loading dose of heparin for the initiation of ECMO. There was no significant difference in heparin use between the survivors and non-survivors (70% in survivors vs. 60% in non-survivors,  $p=0.691$ ). When comparing the direct and indirect lung injury groups, there were no significant differences in variables other than age and ECMO onset time.

**Conclusions:** If more evidence is gathered, risk factors and indications will be identified and we expect that more trauma patients will receive appropriate treatment with ECMO.

**Keywords:** Extracorporeal membrane oxygenation; Multiple trauma

## INTRODUCTION

There are two main causes of acute respiratory distress syndrome (ARDS) in trauma patients. The first is direct severe lung injury, which progresses to respiratory failure [1]. The second occurs among patients who receive critical care due to multiple traumatic injuries [2]. Despite management in the intensive care unit (ICU), severe lung injury with ARDS or cardiopulmonary insufficiency is still associated with high morbidity and mortality [3,4]. Extracorporeal membrane oxygenation (ECMO) has been used in patients who have undergone pulmonary transplantation and require additional cardiopulmonary support when the standard means of ventilation are ineffective [5]. Thus, ECMO might be used as a temporary replacement for the damaged lung to provide sufficient ventilation and oxygenation, to improve hypercapnia, and to allow time for recovery of the lung [6,7]. However, due to the possibility of bleeding complications, the use of ECMO at trauma care centers has been limited [8,9]. Inadequate research has been conducted on the use of ECMO in trauma patients. South Korea has 17 trauma centers; however, ECMO is rarely used in the management of trauma.

This study retrospectively analyzed the characteristics of trauma patients in whom ECMO was used. Data were obtained from the Korea Trauma Data Bank (KTDB), which was established in 2014. This study aimed to describe the experiences at a single institution with the use of ECMO in trauma patients.

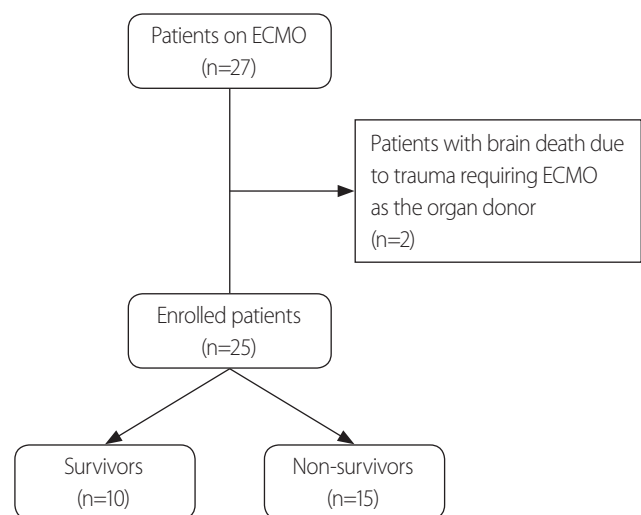
## METHODS

### Patient selection and data collection

Trauma patients who underwent ECMO at a single regional trauma center from January 2015 to December 2019 were enrolled. The charts prospectively stored in the KTDB were analyzed retrospectively. Of the 27 patients, two were excluded. These two patients experienced brain death due to trauma and required ECMO maintenance as organ donors (Fig. 1). Patient characteristics, including age, sex, type of injury (traffic accident, crush injury, hanging, fall, drowning, electrical injury, blunt injury), Glasgow Coma Scale (GCS), systolic blood pressure (SBP)

on arrival at the emergency department (ED), and whether cardiopulmonary resuscitation was performed in the ED were confirmed. With a description of the damage, including the Injury Severity Score (ISS), the degree of lung injury (represented by the Abbreviated Injury Scale [AIS] 3), and whether the lung injury was direct (defined as AIS 3 score of 4 or 5), the need for surgical intervention was evaluated. The amount of transfusion agents administered (red blood cells, fresh frozen plasma, and platelets) during 24 hours after arrival at the hospital and the total amount of transfusion during hospitalization were recorded. The clinical outcomes included the duration of hospital stay, continuous renal replacement therapy (CRRT), and mortality.

The average time from admission to the initiation of ECMO and the duration for which ECMO was provided, the mode of ECMO (veno-venous [VV], veno-arterial [VA], and multiple), the catheter approach used, and administration of heparin were analyzed. The partial pressure of arterial oxygen (PaO<sub>2</sub>) and partial pressure of carbon dioxide (PaCO<sub>2</sub>) were assessed before and after ECMO. In addition, the values of hemoglobin (Hgb) and lactate were evaluated. The pre-ECMO values were defined as the last values checked before ECMO application, and the post-ECMO values were checked within 30 minutes to an hour after ECMO application.



**Fig. 1.** Flow chart of the study design. ECMO: extracorporeal membrane oxygenation.

### Techniques of ECMO

The criteria for application of ECMO were hypoxemia ( $\text{PaO}_2/\text{fraction of inspired oxygen } [\text{FiO}_2] < 200 \text{ mmHg}$ ,  $\text{FiO}_2 0.8\text{--}1.0$ ) during a ventilation time longer than 8 hours; tidal volume  $>4\text{--}6 \text{ mL/kg}$  ideal body weight; inspiratory pressure  $>32\text{--}34 \text{ mmHg}$ ; respiratory acidosis ( $\text{pH} < 7.25$ ), and/or arterial oxygen saturation  $<90\%$  [10]. If the above criteria were met, the thoracic surgeon inserted the catheters and primed the machine before initiating ECMO. The ECMO machine used in this study requires priming before use (QUADROX PLS, Maquet, Rastatt, Germany). The Seldinger method was mainly used for catheter insertion. ECMO was regulated and removed while clinical biomarkers of oxygenation were confirmed by a thoracic surgeon.

### Statistical analysis

The statistical analysis was performed using SPSS version 25.0 (IBM Corp., Armonk, NY, USA). Continuous variables are expressed as mean  $\pm$  standard deviation. Categorical variables are expressed as absolute numbers and percentages. Comparisons between groups were performed using the chi-square test or Fisher exact test for categorical values and the Student *t*-test or the Mann-Whitney *U*-test for continuous values. A *p*-value of less than 0.05 was considered to indicate statistical significance.

## RESULTS

### Patient data

The mean age of the 25 patients was  $45.9 \pm 19.5$  years, and 19 patients (76.0%) were male. The most common cause of injury was traffic accidents, followed by falls, and 19 patients (76.0%) had direct lung injuries. The mean GCS score was  $6.8 \pm 5.3$ . The SBP of seven patients (28.0%) was not confirmed on arrival at the ED and the SBP of seven patients (28.0%) was less than 90 mmHg. The mean ISS was  $26.1 \pm 10.1$ . Ten patients (40.0%) had an AIS 3 score of 4 and six patients (24.0%) had an AIS 3 score of 5 points. Ten patients (40.0%) underwent surgery and 11 (44.0%) underwent CRRT. The mean hospital stay was  $26.1 \pm 39.9$  days and the average amount of total blood transfused during hospitalization was  $50.0 \pm 76.6$ . The mortality rate

was 60.0% ( $n=15$ ) (Table 1).

**Table 1.** Patient characteristics

Variable	Value (n=25)
Age (years)	45.9 $\pm$ 19.5
Sex (male)	19 (76.0)
Type of injury	
Traffic accident	8 (32.0)
Crush injury	1 (4.0)
Hanging	1 (4.0)
Fall	7 (28.0)
Drowning	6 (24.0)
Electrical injury	1 (4.0)
Blunt injury	1 (4.0)
GCS	6.8 $\pm$ 5.3
SBP	
Unchecked	7 (28.0)
$\geq 90 \text{ mmHg}$	11 (44.0)
$< 90 \text{ mmHg}$	7 (28.0)
CPR	12 (48.0)
ISS	26.1 $\pm$ 10.1
AIS 3	
0 Score	5 (20.2)
1 Score	0 (0.0)
2 Score	1 (4.0)
3 Score	3 (12.0)
4 Score	10 (40.0)
5 Score	6 (24.0)
Direct lung injury	19 (76.0)
Surgery performed	10 (40.0)
RBCs in 24 hours	10.6 $\pm$ 14.5
FFP in 24 hours	8.7 $\pm$ 12.8
Platelets in 24 hours	2.2 $\pm$ 5.9
Total transfusion during hospitalization	50.0 $\pm$ 76.6
Hospital stay (days)	26.1 $\pm$ 39.9
Concurrent CRRT	11 (44.0)
Mortality	15 (60.0)

Values are presented as mean  $\pm$  standard deviation or number (%). GCS: Glasgow Coma Scale, SBP: systolic blood pressure, CPR: cardiopulmonary resuscitation, ISS: Injury Severity Score, AIS: Abbreviated Injury Scale, RBCs: red blood cells, FFP: fresh frozen plasma, CRRT: continuous renal replacement therapy.

**ECMO-related factors**

ECMO initiation required a mean duration of 58.0±135.4 hours. The mean duration of ECMO maintenance was 90.9±123.9 hours. VV-ECMO was used in 13 patients (52.0%), and six catheter insertion sites were in the femoral veins and seven in the femoral and jugular veins. VA-ECMO was used in 10 patients (40.0%), and the femoral vein and artery were used. In the other two cases, VV-ECMO was applied after VA-ECMO in one case, and VV-ECMO was applied after VV arterial ECMO in the other case. The jugular vein and femoral artery were accessed, and the femoral artery was replaced with the femoral vein. Six-

**Table 2.** ECMO-related factors

Factor	Value (n=25)
Start of ECMO (hours)	58.0±135.4
Duration of ECMO (hours)	90.9±123.9
Mode of ECMO	
VV	13 (52.0)
VA	10 (40.0)
Multiple	2 (8.0)
Catheter access	
Femoral vein, femoral vein	6 (24.0)
Femoral vein, jugular vein	7 (28.0)
Femoral vein, femoral artery	10 (40.0)
Jugular vein, femoral artery→vein	2 (8.0)
Heparin	16 (64.0)
Pre-ECMO <sup>a</sup> PaO <sub>2</sub> (mmHg)	56.0±12.7
Pre-ECMO <sup>a</sup> PaCO <sub>2</sub> (mmHg)	63.4±23.3
Pre-ECMO <sup>a</sup> Hgb (g/dL)	11.4±2.3
Pre-ECMO <sup>a</sup> lactate (mmol/L)	6.1±4.3
Post-ECMO <sup>b</sup> PaO <sub>2</sub> (mmHg)	148.1±108.5
Post-ECMO <sup>b</sup> PaCO <sub>2</sub> (mmHg)	39.1±18.0
Post-ECMO <sup>b</sup> Hgb (g/dL)	11.1±1.9
Post-ECMO <sup>b</sup> lactate (mmol/L)	7.3±3.6

Values are presented as mean±standard deviation or number (%). ECMO: extracorporeal membrane oxygenation, VV: veno-venous, VA: veno-arterial, PaO<sub>2</sub>: partial pressure of arterial oxygen, PaCO<sub>2</sub>: partial pressure of carbon dioxide, Hgb: hemoglobin.  
<sup>a</sup>Pre-ECMO values were defined as the last checked values before ECMO application.  
<sup>b</sup>Post-ECMO values were checked within 30 minutes to an hour after ECMO application.

teen patients (64.0%) were administered a loading dose of heparin for initiation of ECMO. The mean pre-ECMO PaO<sub>2</sub> was 56.0±12.7 mmHg, and pre-ECMO PaCO<sub>2</sub> was 63.4±23.3 mmHg. The mean pre-ECMO Hgb level was 11.4±2.3 g/dL, and pre-ECMO lactate was 6.1±4.3 mmol/L. The mean post-ECMO PaO<sub>2</sub> was 148.1±108.5 mmHg, and post-ECMO PaCO<sub>2</sub> was 39.1±18.0 mmHg. The mean post-ECMO Hgb level was 11.1±1.9 g/dL, and post-ECMO lactate was 7.3±3.6 mmol/L (Table 2).

**Comparison between survivors and non-survivors**

Non-survivors more frequently received CRRT than survivors; however, this difference was not meaningful (20% in survivors vs. 60% in non-survivors, *p*=0.099) (Table 3). There was also no significant difference in the use of heparin between survivors and non-survivors (70% in survi-

**Table 3.** Comparison of characteristics between survivors and non-survivors

Characteristic	Survivors (n=10)	Non-survivors (n=15)	<i>p</i> -value
Age (years)	41.0±16.7	49.1±21.1	0.318
Sex (male)	7 (70.0)	12 (80.0)	0.653
GCS	7.1±5.6	6.5±5.3	0.799
SBP			0.088 <sup>a</sup>
Unchecked	2 (20.0)	5 (33.3)	
≥90 mmHg	7 (70.0)	4 (26.7)	
<90 mmHg	1 (10.0)	6 (40.0)	
CPR	4 (40.0)	8 (53.4)	0.688
ISS	25.9±10.4	26.3±10.3	0.932
Surgery performed	4 (40.0)	6 (40.0)	>0.999
RBCs in 24 hours	6.8±8.4	13.2±17.2	0.288
FFP in 24 hours	5.1±7.3	11.1±15.2	0.257
Platelets in 24 hours	0.0±0.0	3.7±7.3	0.123
Total transfusion during hospitalization	32.6±31.3	61.7±95.3	0.364
CRRT	2 (20.0)	9 (60.0)	0.099
Hospital day (days)	53.2±52.6	8.2±9.3	0.003

Values are presented as mean±standard deviation or number (%). GCS: Glasgow Coma Scale, SBP: systolic blood pressure, CPR: cardiopulmonary resuscitation, ISS: Injury Severity Score, RBCs: red blood cells, FFP: fresh frozen plasma, CRRT: continuous renal replacement therapy.  
<sup>a</sup>Result of Fisher exact test.

**Table 4.** Survivors versus non-survivors according to ECMO-related factors

Factor	Survivors (n=10)	Non-survivors (n=15)	p-value
Start of ECMO (hours)	61.1±171.5	55.9±111.7	0.920
Duration of ECMO (hours)	65.1±32.4	108.1±157.6	0.406
Mode of ECMO			0.109 <sup>c</sup>
VV	6 (60.0)	7 (46.7)	
VA	4 (40.0)	6 (40.0)	
Multiple	0 (0.0)	2 (13.3)	
Heparin	7 (70.0)	9 (60.0)	0.691
Pre-ECMO <sup>a</sup> PaO <sub>2</sub> (mmHg)	57.1±14.5	55.2±11.9	0.720
Pre-ECMO <sup>a</sup> PaCO <sub>2</sub> (mmHg)	59.4±17.5	66.0±26.7	0.495
Pre-ECMO <sup>a</sup> Hgb (g/dL)	11.4±2.6	11.4±2.1	0.978
Pre-ECMO <sup>a</sup> lactate (mmol/L)	4.5±2.5	7.2±5.0	0.123
Post-ECMO <sup>b</sup> PaO <sub>2</sub> (mmHg)	176.2±138.7	129.5±82.9	0.302
Post-ECMO <sup>b</sup> PaCO <sub>2</sub> (mmHg)	39.8±21.9	38.6±15.7	0.881
Post-ECMO <sup>b</sup> Hgb (g/dL)	11.1±1.8	11.1±2.0	0.997
Post-ECMO <sup>b</sup> lactate (mmol/L)	6.3±2.2	8.1±4.3	0.255

Values are presented as mean±standard deviation or number (%).

ECMO: extracorporeal membrane oxygenation, VV: veno-venous, VA: venoarterial, PaO<sub>2</sub>: partial pressure of arterial oxygen, PaCO<sub>2</sub>: partial pressure of carbon dioxide, Hgb: hemoglobin.

<sup>a</sup>Pre-ECMO values were defined as the last checked values before ECMO application.

<sup>b</sup>Post-ECMO values were checked within 30 minutes to an hour after ECMO application.

<sup>c</sup>Result of Fisher exact test.

vors vs. 60% in non-survivors,  $p=0.691$ ) (Table 4).

**Comparison between the direct lung injury group and indirect lung injury group**

The patients in the direct injury group were significantly younger than those in the indirect injury group (39.9±17.5 years vs. 56.4±19.4 years,  $p=0.040$ ). The ECMO start time was faster in the direct injury group (10.5±25.2 hours vs. 142.4±203.1 hours,  $p=0.016$ ). However, there was no significant difference in mortality between the direct and indirect lung injury groups (56.3% vs. 66.7%,  $p=0.691$ ) (Table 5).

**DISCUSSION**

In cases where ECMO is used in trauma patients, the causes of severe lung injury include insufficient ventilator care during conservative treatment or ARDS during ICU

care for multiple traumas [1]. ECMO is sometimes selected as a salvage technique in trauma; however, its use is still controversial [11]. In South Korea, it is considered as an alternative treatment; hence, it is rarely used. Since it is challenging to find data on the use of ECMO in trauma, we analyzed its use in trauma cases.

In total, 25 patients were analyzed, including those who had sustained trauma due to drowning and hanging. Drowning was considered as a direct lung injury, and was included in the group of patients with an AIS 3 score of 5. In the case of hanging, ECMO was applied since ARDS occurred during ICU care for a patient with an AIS 1 score of 5. In this study, VA-ECMO was most frequently applied in patients with injuries caused by hanging and drowning.

There were nine patients in whom heparin was not administered during ECMO application (three survivors [30.0%] and six non-survivors [40.0%]). In patients with multiple traumas, the chances of bleeding are high, mak-

**Table 5.** Comparison of characteristics between patients with direct and indirect lung injuries

Characteristics	Direct injury (n=16)	Indirect injury (n=9)	p-value
Age (years)	39.9±17.5	56.4±19.4	0.040
Sex (male)	11 (68.8)	8 (88.9)	0.364
GCS	9.0±5.6	5.5±4.8	0.114
SBP			0.472 <sup>c</sup>
Unchecked	4 (25.0)	3 (33.3)	
≥90 mmHg	8 (50.0)	3 (33.3)	
<90 mmHg	4 (25.0)	3 (33.3)	
CPR	9 (56.3)	3 (33.3)	0.411
ISS	26.8±12.2	25.0±5.4	0.688
Surgery performed	5 (31.3)	5 (55.6)	0.397
Start of ECMO (hours)	10.5±25.2	142.4±203.1	0.016
Duration of ECMO (hours)	102.9±146.4	69.7±71.0	0.531
Heparin	11 (68.8)	5 (55.6)	0.671
Pre-ECMO <sup>a</sup> PaO <sub>2</sub> (mmHg)	58.9±12.7	50.7±11.6	0.125
Pre-ECMO <sup>a</sup> PaCO <sub>2</sub> (mmHg)	63.8±28.1	62.6±12.2	0.906
Pre-ECMO <sup>a</sup> Hgb (g/dL)	11.5±2.7	11.2±1.4	0.769
Pre-ECMO <sup>a</sup> lactate (mmol/L)	6.4±4.4	5.5±1.4	0.633
Post-ECMO <sup>b</sup> PaO <sub>2</sub> (mmHg)	152.5±118.3	140.4±94.5	0.796
Post-ECMO <sup>b</sup> PaCO <sub>2</sub> (mmHg)	41.7±21.2	34.4±9.2	0.337
Post-ECMO <sup>b</sup> Hgb (g/dL)	11.1±2.0	11.1±1.7	0.940
Post-ECMO <sup>b</sup> lactate (mmol/L)	7.8±3.6	6.5±3.6	0.389
CRRT	7 (43.8)	4 (44.4)	>0.999
Hospital stay (days)	29.8±48.2	19.8±18.7	0.558
Mortality	9 (56.3)	6 (66.7)	0.691

Values are presented as mean±standard deviation or number (%).

GCS: Glasgow Coma Scale, SBP: systolic blood pressure, CPR: cardiopulmonary resuscitation, ISS: Injury Severity Score, ECMO: extracorporeal membrane oxygenation, PaO<sub>2</sub>: partial pressure of arterial oxygen, PaCO<sub>2</sub>: partial pressure of carbon dioxide, Hgb: hemoglobin, CRRT: continuous renal replacement therapy.

<sup>a</sup>Pre-ECMO values were defined as the last checked values before ECMO application.

<sup>b</sup>Post-ECMO values were checked within 30 minutes to an hour after ECMO application.

<sup>c</sup>Result of Fisher exact test.

ing it challenging to use anti-hemostatic agents [12-14]. Recent studies have shown that ECMO without the use of heparin has good outcomes if VV-ECMO is applied in cases of trauma with a high risk of bleeding [11,12,15]. Although our study did not compare the group to one in which only VV-ECMO was applied, the administration or non-administration of heparin did not affect survival.

Kidney injury might occur due to complications during ECMO application. Acute kidney injury (AKI) during

ECMO is caused by hypoperfusion, loss of autoregulation, hypoxia, nephrotoxic drugs, and systemic inflammation [16]. Other reasons for which CRRT might be required include acid-base and electrolyte disturbances and fluid overload [16]. Hamdi and Palmer [16] reported an AKI incidence of more than 80% with 50% of those patients requiring renal replacement therapy within the first week of ECMO application. Thongprayoon et al. [17] reported that the mortality in patients who received CRRT was

3.7-fold higher due to AKI progression during ECMO application. In our study, 11 patients (44.0%) with AKI were treated with CRRT, and there was no significant difference in the need for CRRT between survivors and non-survivors; however, CRRT was provided more frequently in non-survivors.

In our study, two cases of indirect lung injury were due to a cervical spine injury; one case was due to electric shock, and one case was due to bowel injury. Five patients had long bone or pelvic bone fractures, and two patients had liver injuries. The reasons for using ECMO were ARDS (four cases), pulmonary thromboembolism occurrence (two cases), post-cardiac arrest (one case), aspiration pneumonia (one case), and asphyxia (one case). Engström et al. [18] reported that the incidence of respiratory failure was high in ICU-treated patients with pelvic fractures, and the risk factors were the degree of lung contusion and surgery. There were few patients in our study in whom we could not analyze the risk factors that could cause ARDS due to pelvic bone fractures. However, these patients comprised the majority of the indirect lung injury group.

There were significant differences in age and ECMO onset time between the direct and indirect lung injury groups. As for the age difference, since the population was small, it would be inappropriate to conclude that those with a younger age suffered more direct injuries based on these results alone. In cases of direct lung injury, the decision to apply ECMO would have been made more quickly because oxygenation after the injury was unfavorable due to severe lung contusions. In cases of indirect lung injury, the start time of ECMO might have been delayed because ARDS occurred due to complications during ICU care.

The other variables showed no significant differences between the two groups. None of the patients had previous lung disease. In the patients with indirect lung injuries, lung disease occurred acutely, similarly to lung injuries due to trauma, and ECMO was applied in such patients. Compared with traumatic direct lung injuries requiring ECMO, performing ECMO in response to an acute disease pattern in trauma led to no significant differences, so it is worth considering ECMO more actively in patients with severe lung injuries.

The limitations of this study include the fact that it was

a retrospective analysis comprising a few patients. Therefore, in this study, patients with hanging and drowning were included, and in these cases, VA-ECMO was applied. Another limitation of our study is that not only trauma patients were analyzed. In addition, serial checks of clinical biomarkers for ECMO monitoring have not been standardized. Furthermore, before ECMO application, ECMO-related factors (positive end expiratory pressure level or the peak flow ratio) could not be analyzed in the study because many values were missing from the medical charts. As a final limitation, there was one case of traumatic brain injury; however, the mean GCS was 6.8. The GCS was recorded in the nursing records upon arrival at the ED. Even a patient has not experienced a brain injury, if there is a loss of consciousness due to hypovolemic shock, the GCS may be evaluated as low. Thus, a limitation is that continuous evaluations of the GCS were required, but not conducted. ECMO has been applied at other South Korea trauma centers in few trauma patients. Therefore, a multicenter analysis is necessary, and we expect that more research will be conducted at other institutions in the future.

## CONCLUSION

ECMO is a feasible treatment option when trauma patients have a severe chest injury or ARDS caused by other injuries. Since no significant difference was found in comparison to cases where ECMO was used in patients with acute respiratory disease, active use of ECMO is recommended in patients with direct lung injuries who meet the criteria for applying ECMO. If more research is conducted, risk factors and indications will be identified, and we expect that more trauma patients will receive appropriate treatment with ECMO.

## REFERENCES

1. Michaels AJ. Management of post traumatic respiratory failure. *Crit Care Clin* 2004;20:83-99.
2. Michaels AJ, Schriener RJ, Kolla S, Awad SS, Rich PB, Reickert C, et al. Extracorporeal life support in pulmonary failure after

- trauma. *J Trauma* 1999;46:638-45.
3. Chen CY, Hsu TY, Chen WK, Muo CH, Chen HC, Shih HM. The use of extracorporeal membrane oxygenation in trauma patients: a national case-control study. *Medicine (Baltimore)* 2018;97:e12223.
  4. Probst C, Pape HC, Hildebrand F, Regel G, Mahlke L, Giannoudis P, et al. 30 years of polytrauma care: an analysis of the change in strategies and results of 4849 cases treated at a single institution. *Injury* 2009;40:77-83.
  5. Terragni P, Faggiano C, Ranieri VM. Extracorporeal membrane oxygenation in adult patients with acute respiratory distress syndrome. *Curr Opin Crit Care* 2014;20:86-91.
  6. Keel M, Meier C. Chest injuries - what is new? *Curr Opin Crit Care* 2007;13:674-9.
  7. Keel M, Trentz O. Pathophysiology of polytrauma. *Injury* 2005;36:691-709.
  8. Brodie D, Bacchetta M. Extracorporeal membrane oxygenation for ARDS in adults. *N Engl J Med* 2011;365:1905-14.
  9. Pfeifer R, Teuben M, Andruszkow H, Barkatali BM, Pape HC. Mortality patterns in patients with multiple trauma: a systematic review of autopsy studies. *PLoS One* 2016;11:e0148844.
  10. Murray JF, Matthay MA, Luce JM, Flick MR. An expanded definition of the adult respiratory distress syndrome. *Am Rev Respir Dis* 1988;138:720-3.
  11. Robba C, Ortu A, Bilotta F, Lombardo A, Sekhon MS, Gallo F, et al. Extracorporeal membrane oxygenation for adult respiratory distress syndrome in trauma patients: a case series and systematic literature review. *J Trauma Acute Care Surg* 2017;82:165-73.
  12. Kopp R, Bensberg R, Henzler D, Niewels A, Randerath S, Ros-saint R, et al. Hemocompatibility of a miniaturized extracorporeal membrane oxygenation and a pumpless interventional lung assist in experimental lung injury. *Artif Organs* 2010;34:13-21.
  13. Arlt M, Philipp A, Voelkel S, Rupprecht L, Mueller T, Hilker M, et al. Extracorporeal membrane oxygenation in severe trauma patients with bleeding shock. *Resuscitation* 2010;81:804-9.
  14. Wang C, Zhang L, Qin T, Xi Z, Sun L, Wu H, et al. Extracorporeal membrane oxygenation in trauma patients: a systematic review. *World J Emerg Surg* 2020;15:51.
  15. Wen PH, Chan WH, Chen YC, Chen YL, Chan CP, Lin PY. Non-heparinized ECMO serves a rescue method in a multitrauma patient combining pulmonary contusion and nonoperative internal bleeding: a case report and literature review. *World J Emerg Surg* 2015;10:15.
  16. Hamdi T, Palmer BF. Review of extracorporeal membrane oxygenation and dialysis-based liver support devices for the use of nephrologists. *Am J Nephrol* 2017;46:139-49.
  17. Thongprayoon C, Kaewput W, Thamcharoen N, Bathini T, Watthanasuntorn K, Lertjitbanjong P, et al. Incidence and impact of acute kidney injury after liver transplantation: a meta-analysis. *J Clin Med* 2019;8:372.
  18. Engström J, Reinius H, Ström J, Bergström MF, Larsson IM, Larsson A, et al. Lung complications are common in intensive care treated patients with pelvis fractures: a retrospective cohort study. *Scand J Trauma Resusc Emerg Med* 2016;24:52.