



Research Article

Vitamin K variations in conger eel (*Conger myriaster*) influenced by harvest time and size

Junhee Park¹, Kang-Hee Lee¹, Rea Mae Cuario Templonuevo^{1,2}, Jinwoo Yang³, Jiyeon Chun^{1*}

¹Department of Food Science and Technology, Suncheon National University, Suncheon 57922, Korea

²College of Fisheries, Central Luzon State University, Science City of Muñoz, Nueva Ecija 3120, Philippines

³Food Safety and Processing Research Division, National Institute of Fisheries Science, Busan 46083, Korea

Abstract This study analyzed the variation in vitamin K content in conger eel (*Conger myriaster*) caught off Tongyeong, Gyeongsangnam-do, Korea, focusing on the influence of size (large and small) and harvest period (monthly throughout 2021). We applied enzymatic extraction and HPLC-fluorescence methods for the analysis of vitamin K₁ (phylloquinone) and K₂ (menaquinone). The vitamin K content in conger eel varied significantly with size and harvest season ($p < 0.05$). In large-sized samples, the phylloquinone content peaked in July ($0.80 \pm 0.09 \mu\text{g}/100 \text{g}$), while the highest menaquinone content was in May ($0.79 \pm 0.11 \mu\text{g}/100 \text{g}$). Conversely, in small-sized conger eels, the highest phylloquinone was found in December ($1.94 \pm 0.15 \mu\text{g}/100 \text{g}$), and the peak menaquinone level was in January ($0.66 \pm 0.02 \mu\text{g}/100 \text{g}$). The fat content was highest in July for large samples and in January for smaller ones. There was a positive correlation between fat and total vitamin K contents in conger eel ($r = 0.631, 0.667$). Method validation and quality control measures ensured data reliability for vitamin K₁ and K₂ analyses. This study provides reliable information on the size and seasonal variations of vitamin K in conger eels, a staple in the Korean diet. This information is valuable for inclusion in Korea's national food nutrition database and for formulating future national health and nutrition policies.



OPEN ACCESS

Citation: Park J, Lee KH, Templonuevo RMC, Yang J, Chun J. Vitamin K variations in conger eel (*Conger myriaster*) influenced by harvest time and size. Korean J Food Preserv, 30(6), 929-943 (2023)

Received: October 06, 2023

Revised: November 08, 2023

Accepted: November 10, 2023

***Corresponding author**

Jiyeon Chun
Tel: +82-61-750-3258
E-mail: cjyfall@scnu.ac.kr

Copyright © 2023 The Korean Society of Food Preservation. This is an Open Access article distributed under the terms of the Creative Commons Attribution Non-Commercial License (<http://creativecommons.org/licenses/by-nc/4.0>) which permits unrestricted non-commercial use, distribution, and reproduction in any medium, provided the original work is properly cited.

Keywords vitamin K, conger eel, size, harvest period, fat content

1. Introduction

Korea has become an aging society, with the population aged 65 and over surpassing 14% of the total population as of 2017. This demographic shift is accompanied by an accelerated incidence of various adult diseases. In particular, calcium levels tend to decline with age and menopause in women, compared to men, leading to an increased incidence of osteoporosis. This condition is becoming more prevalent in younger generations due to excessive dieting among women (Hodges et al., 1993; Iwamoto, 2000; Jeong, 2017; Kasper et al., 2013). Vitamin K

plays a crucial role in promoting the gamma-carboxylation of osteocalcin in bones, which inhibits bone resorption by osteoclasts and fosters bone formation by osteoblasts. In particular, vitamin K has a beneficial impact on maintaining calcium balance, a vital aspect of bone metabolism, thus underscoring the importance of consuming vitamin K in conjunction with calcium (Kanai et al., 1997; Price, 1985). As a fat-soluble vitamin, vitamin K is essential for reducing osteoporosis through its roles in blood coagulation and bone metabolism, as well as aiding in protein synthesis and decreasing arteriosclerosis (Institute of Medicine, 2001). Naturally occurring vitamin K mainly exists as K₁ (phylloquinone), predominantly found in plants, and K₂ (menaquinone), synthesized by bacteria. Vitamin K₂ is further classified as menaquinone-n, based on the number of prenyl units in its side chain, and is especially abundant in animal-based foods.

Evaluating the nutrient intake from major foods consumed by the public is crucial for enhancing dietary habits and formulating national health and nutrition policies. Korea, surrounded by the sea on three sides, has a wealth of fishery resources available year-round. With a per capita seafood consumption of 57.05 kg per year, the country ranks fourth globally in seafood consumption (FAO, 2019). However, the existing Korea Standard Seafood Composition Table 2018, which details the nutritional content of domestic seafood, currently only includes vitamin A (retinol) among the fat-soluble vitamins. Although the Ministry of the Interior and Safety has recently started providing nutritional information on foods commonly consumed in Korea through a public portal, there is a noticeable gap in information on micronutrients in fishery resources. This lack of

data limits the utility of the national food nutrient database. In particular, there is an immediate need to establish detailed information on vitamin K in commonly consumed domestic fishery resources and processed products. Presently, such information is predominantly available for agricultural and livestock resources, with a significant deficiency in data on fishery resources.

Korea's distinct four seasons and the resulting changes in water temperature and environment significantly impact the growth environment of fishery resources. Jeong et al. (1998) reported that in marine ecosystems, the nutrient composition of fish is likely to vary considerably across seasons due to a complex interplay of factors such as fish diet, water temperature, and spawning patterns. While there have been studies on the seasonal variations in the characteristics of fishery resources, the majority have focused on changes in species composition and community distribution (Hwang and Park, 2017; Lee et al., 2000; Lee et al., 2010; Oh et al., 2012; Shin et al., 2016). However, research addressing seasonal changes in the levels of micronutrients in fishery resources is notably scarce.

Among the various fishery resources found in the waters around Korea, the conger eel (*Conger myriaster*) stands out as a highly nutritious food. It is rich in protein, lipids including ω -3 PUFAs, fat-soluble vitamins, and phospholipids. Recognized as an important edible fish species not only in Korea but also in Japan, it holds significant economic value (Kim et al., 2011; Park, 2022). Despite its nutritional importance, research on *C. myriaster* has predominantly focused on aspects such as age, growth, diet, feeding ecology, and gonadosomatic index (Correia et al., 2009; Huh and Kwak, 1998; Kim et al., 2011; O'Sullivan et al., 2003; Xavier et

al., 2010). Studies on its composition have been limited mainly to its general makeup (Ryu et al., 2009), highlighting a need for more research into its micro-vitamin content.

This study aims to sample *C. myriaster*, a settled fish species available year-round in the waters near Tongyeong, Korea, on a monthly basis throughout 2021. Our objective is to analyze the changes in vitamin K content relative to seasonal variations and size, as well as to examine the correlations between fat-soluble vitamin K content and seasonal changes in fat content. Furthermore, to guarantee the reliability of the analytical data, the enzymatic extraction and HPLC-FLD quantitative methods used for vitamin K analysis were validated using established method validation indicators. Analytical quality control was also rigorously maintained throughout the entire study period.

2. Materials and methods

2.1. Reagents

The standards for phyloquinone and menaquinone used in the vitamin K assay were obtained from Sigma-Aldrich (St. Louis, MO, USA). Lipase (from *Candida myriaster*), employed in the extraction process, was also sourced from Sigma-Aldrich. Sodium sulfate anhydrous was purchased from Junsei (Tokyo, Japan), and potassium carbonate anhydrous from Daejung Chemical (Shiheung, Korea). All other reagents and solvents utilized in the analysis were of high-performance liquid chromatography (HPLC) grade.

To validate the accuracy of the vitamin K assay, samples SRM 1869 (infant/adult nutritional formula II) and SRM 1849a (infant/adult nutritional formula I) were acquired from the National Institute of Standards and Technology (NIST, Gaithersburg, MD,

USA). Additionally, commercial infant formula (Imperial Dream XO World Class 3, Namyang, Seoul, Korea), used as analytical quality control samples, was purchased from a local supermarket. These samples were stored at -70°C and utilized as quality control samples throughout the entire study period.

2.2. Sample preparation

C. myriaster, an anadromous fish found in the waters around Tongyeong, Gyeongsangnam-do, Korea, was collected monthly, categorized by size (large and small) from January to December 2021. Each month, *C. myriaster* was collected a total of 12 times per month and sorted into large (80 ± 5 cm) and small (50 ± 5 cm) sizes. The fishes were then homogenized, with non-edible parts such as head, intestines, skin, and fins removed, following the seafood pre-treatment method presented in FAO/INFOODS. Sampling and pre-treatment processes were performed at the National Fisheries Research and Development Institute (Busan, Korea). The homogenized samples were aliquoted and shipped frozen in ice packs to the analytical laboratory. They were stored at -70°C until the time of analysis.

2.3. Extracting vitamin K

For the vitamin K assay, we employed a modified method from the Food Code (MFDS, 2023). Initially, 1.00 g of solid sample was weighed into a stoppered extraction tube and sonicated (using a Cole-Parmer 8893 sonicator, Chicago, IL, USA) with tertiary distilled water at approximately 40°C for 5 minutes. Subsequently, 1.0 g of lipase and 5.0 mL of 0.8 M phosphate buffer (pH 7.95) were added, thoroughly mixed, and incubated in a shaking water bath (HB-205SW, Hanbaek Scientific Co., Bucheon, Korea) for 2 hours at 37°C and 150 rpm. Following the

reaction, 1.0 g of potassium carbonate anhydrous was added to the tube. Next, 10 mL of an ethanol-methanol mixture (95:5, v/v) and 15 mL of n-hexane were added, vigorously mixed for 10 minutes, and then stored in a dark room to facilitate the separation of the hexane layer. The separated supernatant was filtered through a Pasteur pipette filled with sodium sulfate anhydrous and collected into a 25 mL purification flask. The extraction tube, after complete supernatant collection, was treated with an additional 10 mL of n-hexane, and the purification process was repeated to achieve a total volume of 25 mL in the extract, which was then used for the vitamin K assay.

2.4. Vitamin K assay (HPLC-FLD)

After extracting 10 mL of the sample and concentrating it under nitrogen, it was redissolved in 1 mL of methanol. This solution was then filtered through a 0.45 μm membrane filter (Advantec Co., Tokyo, Japan) and prepared for HPLC analysis. The HPLC was performed using an Agilent 1200 series system (Agilent, Santa Clara, CA, USA), equipped with a ZORBAX Eclipse XDB-C18 column (5 μm , 4.6 \times 150 mm, Agilent) and connected to a post-column (2.0 mm \times 50 mm, YMC Co., Ltd., Kyoto, Japan). The analysis utilized a fluorescence detector (Agilent) set to an excitation wavelength of 243 nm and an emission wavelength of 430 nm. The flow rate was maintained at 1.0 mL/min, with a column oven temperature of 35°C and an injection volume of 20 μL . The mobile phase consisted of 3 mM sodium acetate trihydrate, 10 mM zinc chloride, and 5 mM acetic acid in a methanol:dichloromethane mixture at a 9:1 (v:v) ratio.

2.5. Measuring crude fat content

The crude fat content of *C. myriaster* was

determined using the Soxhlet method with a crude fat extractor (ST 243 SOXTECT™, FOSS Tecator, Hillerod, Denmark), as per the guidelines in the Food Code (MFDS, 2018).

2.6. Method validation

The validation of the vitamin K assay adhered to the single laboratory guidelines set by the Association of Official Agricultural Chemists (AOAC) (2002). Specificity was assessed by comparing the retention times of the target peaks in HPLC chromatograms of both standards (phyloquinone and menaquinone) and samples. Linearity was determined by serially diluting the standard solution (0.001, 0.002, 0.004, 0.008, 0.015, 0.030, 0.060, 0.125, and 0.250 $\mu\text{g}/\text{mL}$) to construct a calibration curve. The limit of detection (LOD) and limit of quantification (LOQ) were calculated by analyzing a blank test solution and applying the standard deviation to the mean value of the signal-to-noise (S/N) ratio, multiplying by 3.3 for LOD and 10 for LOQ, respectively. The method's accuracy was evaluated using standard reference material SRM 1849a (infant/adult nutritional formula I). Recovery (%) was determined by comparing the certified values from the NIST with the analytical values. Precision was evaluated through repeatability (RSD_r), based on five replicates per day, and reproducibility (RSD_R), based on five replicates over five days, using the commercial infant formula (Imperial Dream XO, Namyang).

2.7. Analytical quality control

Throughout the 12-month duration of this study, a quality control (QC) chart was maintained to manage the analytical system. Before analyzing the fish samples, 10 analytical values with a standard deviation within 5% were initially selected from the

values obtained by replicating with the commercial infant formula (Imperial Dream XO World Class 3, Namyang). Their mean and standard deviation were calculated to establish a baseline. The average value was then set as the reference value on the QC chart. The upper and lower control lines (UCL and LCL), as well as the upper and lower action lines (UAL and LAL), were established using specific calculations to monitor the analytical quality of the fish samples. A QC sample was analyzed alongside each sample to ensure consistent quality control of the vitamin K analysis. If the QC sample value fell outside the control lines, the analyzed sample was excluded from the data.

$$\text{UCL and LCL} = \text{mean} \pm (2 \times \text{standard deviation})$$

$$\text{UAL and LAL} = \text{mean} \pm (3 \times \text{standard deviation})$$

2.8. Statistical analysis

Statistical analysis was performed using SPSS 22.0 (Statistics Package for the Social Sciences, SPSS Inc., Chicago, IL, USA). This involved calculating means and standard deviations. To identify significant differences among samples from three or more groups, Duncan's multiple range test was applied at the $p < 0.05$ significance level. For samples from two groups, a t-test was used to test for significant differences. The correlation between vitamin K and crude fat content was analyzed using the Pearson correlation coefficient.

3. Results and discussion

3.1. Method validation

Table 1 presents the results of the linearity, LOD, and LOQ validations for the HPLC-FLD method applied to vitamin K in fish. Linearity verification was achieved by diluting a standard solution containing a mixture of both phylloquinone and menaquinone standards to nine concentrations (0.001–0.250 $\mu\text{g/mL}$). The linearity correlation coefficient (R^2) between vitamin K concentration and HPLC quantification across these nine concentrations was 0.9999, demonstrating the method's strong linearity. For comparison, Kim et al. (2014) used vitamin K₁ standards in the concentration range of 0.0313–2.5075 $\mu\text{g/mL}$ for analyzing eight vegetables. Kim et al. (2022) employed vitamin K₁ and K₂ standards in the range of 0.0125–0.2 $\mu\text{g/mL}$ for analyzing 30 processed foods. In our study, the selected quantification range of 0.001–0.250 $\mu\text{g/mL}$ was lower, deemed appropriate for quantifying vitamins K₁ and K₂ in seafood where vitamin K exists at trace levels. The LOD for phylloquinone and menaquinone was 0.017 $\mu\text{g}/100\text{ g}$ and 0.021 $\mu\text{g}/100\text{ g}$, respectively, and the LOQ was 0.040 $\mu\text{g}/100\text{ g}$ and 0.052 $\mu\text{g}/100\text{ g}$, respectively. These values are over 100-fold lower than those reported by Kim et al. (2022), who analyzed vitamin K in meat using the same HPLC-FLD method, highlighting the high sensitivity of the method employed in this study.

Table 1. Linearity and limits of detection and quantification of the vitamin K analysis using enzymatic extraction coupled with HPLC-FLD

Analytes	Regression equation ¹⁾	Correlation coefficient (R^2)	LOD ²⁾ ($\mu\text{g}/100\text{ g}$)	LOQ ³⁾ ($\mu\text{g}/100\text{ g}$)
Phylloquinone	$y=508.25x-0.0837$	0.9999	0.017	0.040
Menaquinone	$y=511.58x-0.0927$	0.9999	0.021	0.052

¹⁾ y and x of the regression equation for phylloquinone and menaquinone indicate peak area (mAU) of HPLC chromatograms and the concentration of corresponding analytes, respectively.

²⁾ Limit of detection.

³⁾ Limit of quantification.

Fig. 1 illustrates the specificity of the vitamin K assay. In the HPLC chromatogram, the retention times for the peaks analyzed from the vitamin K standard solution and the sample extract were 5.4 minutes for phyloquinone and 8.6 minutes for menaquinone. These peaks demonstrated high resolution without interference from neighboring peaks, ensuring the specific detection of the target components. The precision of the vitamin K assay was assessed in terms of repeatability (RSD_r) and reproducibility (RSD_R), as shown in Table 2. According to the AOAC guidelines (2022), for an analyte concentration of 10 $\mu\text{g}/\text{kg}$ in a sample, the acceptable range for repeatability and reproducibility is a relative standard deviation (RSD) of 15% and 32% or less, respectively. In this study, the repeatability and reproducibility of the method

were within the acceptable ranges set by the AOAC, with RSDs ranging from 1.7-2.6% and 4.0-6.4%, respectively.

The accuracy of the vitamin K assay was validated for phyloquinone using the standard reference material SRM 1849a, as shown in Table 3. In this study, using the HPLC-FLD method, the recovery rate for phyloquinone was 88.8%. When compared to the recovery rate of 114.05% achieved by Kim et al. (2022), who also used the same HPLC-FLD method, the discrepancy between the assay value and the true value appeared to be comparable. Both studies demonstrated high accuracy, with recovery rates of 70-125% and 75-120%, respectively. These rates meet the AOAC guideline's acceptable ranges for accuracy when the analyte concentration in the sample is 10 $\mu\text{g}/\text{kg}$ and 1 $\mu\text{g}/\text{g}$, respectively.

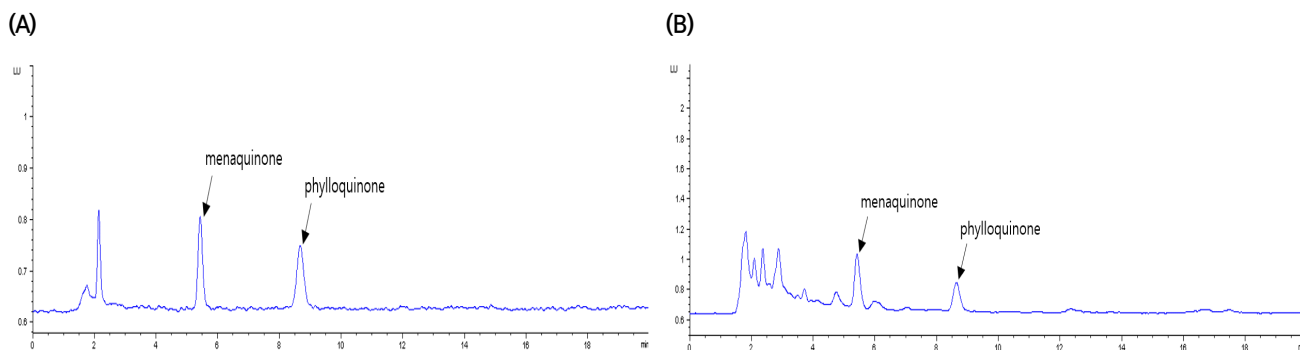


Fig. 1. HPLC chromatograms of vitamin K₁ (phyloquinone) and K₂ (menaquinone) standards (A) and a sample (large-sized conger eel harvested in August 2021) (B).

Table 2. Precision of vitamin K analysis using enzymatic extraction coupled with HPLC-FLD

Analytes	Repeatability ¹⁾ ($\mu\text{g}/100\text{ g}$)		Reproducibility ²⁾ ($\mu\text{g}/100\text{ g}$)	
	Mean \pm SD ³⁾	RSD _r ⁴⁾ (%)	Mean \pm SD	RSD _R ⁵⁾ (%)
Phylloquinone	42.43 \pm 1.09	2.6	41.68 \pm 1.85	4.4
Menaquinone	2.42 \pm 0.04	1.7	2.28 \pm 0.16	6.9

¹⁾Repeatability refers to the results of independent 5 determinations in triplicates obtained by analyzing a sample five times on the same day.

²⁾Reproducibility refers to the results of independent 5 determinations in triplicates obtained by analyzing a sample five times on different days.

³⁾Standard deviation.

⁴⁾RSD_r, relative standard deviation for repeatability.

⁵⁾RSD_R, relative standard deviation for reproducibility.

Table 3. Accuracy of vitamin K analysis using enzymatic extraction coupled with HPLC-FLD

Analytes	Sample	Certified value ¹⁾ ($\mu\text{g}/100\text{ g}$)	Analytical value ²⁾ ($\mu\text{g}/100\text{ g}$)	Recovery ³⁾ (%)	Recovery limit ⁴⁾ (%)
Phylloquinone	SRM 1849a ⁵⁾	106 \pm 17	94.15 \pm 3.85	88.8	75-120

¹⁾The certificated value for the contents of corresponding analytes in SRM provided by NIST.

²⁾The analytical value obtained in this study.

³⁾Recovery (%) = $100 \times (\text{Analysis value} / \text{Certificated value})$.

⁴⁾Recovery limits: 75-120% for analyte content $<1\ \mu\text{g}/\text{g}$ (ppm).

⁵⁾SRM (standard reference material) 1849a: indicate infant/adult nutritional formu.

3.2. Analytical quality assessment

The QC for the vitamin K analysis of *C. myriaster* samples collected throughout 2021 was monitored using a QC chart, as illustrated in Fig. 2. QC charts are valuable for ensuring analytical quality control in studies requiring independent analysis and data production over extended periods. They facilitate monitoring of the validated method's performance during the sample analysis period and help track changes in various analytical environments that may occur. Fig. 2 displays the results from analyzing the vitamin K content in the infant formula, used as a homogeneous control for each *C. myriaster* sample. The control lines, based on the mean values of vitamin K in the QC samples (phylloquinone $42.06\ \mu\text{g}/100\text{ g}$ and menaquinone $2.35\ \mu\text{g}/100\text{ g}$), were set at $39.08\text{--}45.03\ \mu\text{g}/100\text{ g}$ for phylloquinone and $2.08\text{--}2.62\ \mu\text{g}/100\text{ g}$ for menaquinone, incorporating twice the standard deviation. The action lines were established at $37.60\text{--}46.52\ \mu\text{g}/100\text{ g}$ and $1.95\text{--}2.75\ \mu\text{g}/100\text{ g}$, respectively. In the analysis for vitamin K

content, the analytical values of the co-analyzed QC samples consistently fell within the control lines. This indicated that the vitamin K analysis of all *C. myriaster* samples analyzed during the year conformed to the established level of method validation.

3.3. Changes in vitamin K content of *C. myriaster* by size and season

Fig. 3 presents the results of analyzing the vitamin K content in large and small *C. myriaster* samples collected from the waters of Tongyeong, Gyeongsangnam-do, each month from January to December 2021. The large *C. myriaster* samples, harvested over the year, showed a range of $0.31\text{--}0.80\ \mu\text{g}/100\text{ g}$ for phylloquinone, $0.41\text{--}0.79\ \mu\text{g}/100\text{ g}$ for menaquinone, and $0.71\text{--}1.44\ \mu\text{g}/100\text{ g}$ for total vitamin K. In contrast, the small *C. myriaster* samples displayed a range of $0.10\text{--}1.94\ \mu\text{g}/100\text{ g}$ for phylloquinone, $0.18\text{--}0.66\ \mu\text{g}/100\text{ g}$ for menaquinone, and a total vitamin K content of $0.33\text{--}2.39\ \mu\text{g}/100\text{ g}$. This indicates a substantial monthly variation in

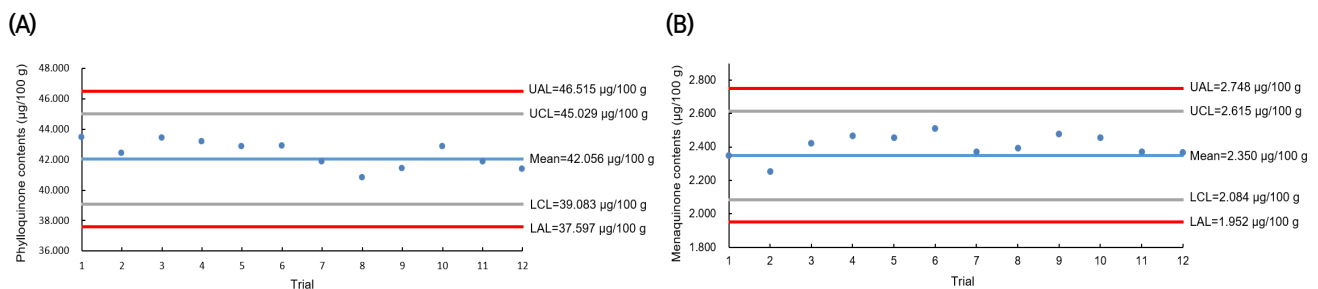


Fig. 2. Quality control charts of the phylloquinone (A) and menaquinone (B) analysis using enzymatic extraction coupled with HPLC-FLD.

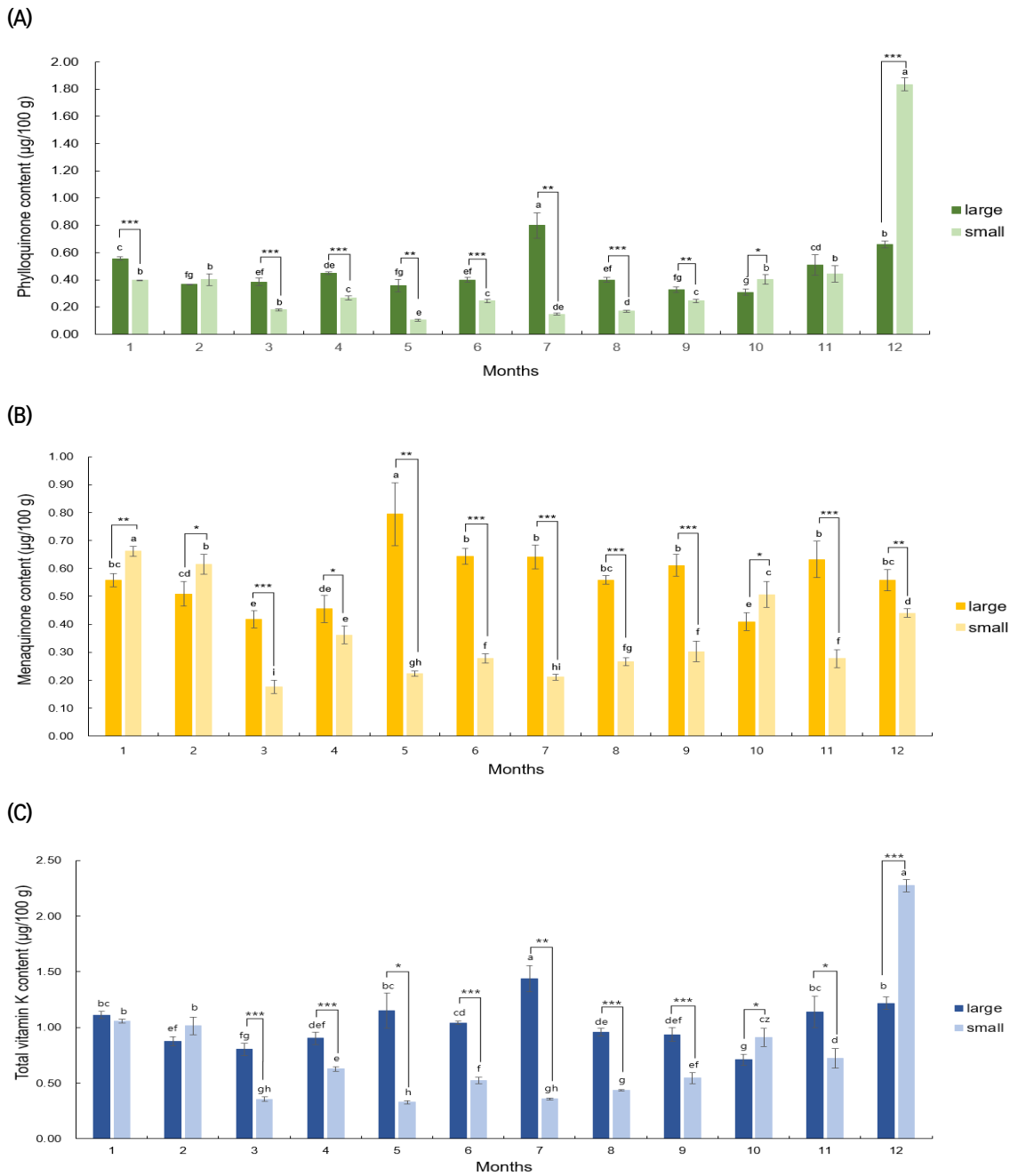


Fig. 3. Vitamin K content of conger eel by size and harvest month in 2021. Means with different superscript letters (a-i) for the same size are significantly different at *p<0.05, **p<0.01, ***p<0.001 represent statistical difference between large-(80 cm) and small-(50 cm) size samples for the same harvest time by t-test. (A), phylloquinone content; (B), menaquinone content; (C), total vitamin K content.

vitamin K content, ranging from a 2.5-fold to 18.7-fold difference. Specifically, for phylloquinone, large *C. myriaster* samples harvested in July ($0.80 \pm 0.09 \mu\text{g}/100 \text{ g}$) and small samples harvested in December

($1.94 \pm 0.15 \mu\text{g}/100 \text{ g}$) showed significantly higher vitamin K content compared to other seasons ($p < 0.05$). Menaquinone content peaked in May ($0.79 \pm 0.11 \mu\text{g}/100 \text{ g}$) for large samples and in January ($0.66 \pm 0.02 \mu\text{g}/100$

g) for small samples. The highest total vitamin K content was observed in July ($1.44 \pm 0.12 \mu\text{g}/100 \text{ g}$) for large *C. myriaster* samples and in December ($2.39 \pm 0.14 \mu\text{g}/100 \text{ g}$) for small samples, highlighting that the differences in monthly content also varied with the size of *C. myriaster*.

Upon analyzing the significance of differences in vitamin K content in *C. myriaster* by size for the same harvest time (as shown in Fig. 3), it was found that phylloquinone and total vitamin K exhibited significant differences by size in 10 of the 12 monthly comparisons from January to December. For menaquinone, significant differences were observed in all 12 months. Additionally, when comparing the mean vitamin K content of large and small *C. myriaster* samples over the entire 12-month period, significant differences were noted in menaquinone and total vitamin K according to sample size, with the exception of phylloquinone. Udagawa et al. (1996) reported that the vitamin K composition in fish tended to mirror that of their prey, indicating that vitamin K content is influenced by the type of prey consumed. In a related study, Kim et al. (2020) investigated changes in stomach content composition with the growth of *C. myriaster*, identifying anchovies as the most important prey for smaller fish, while fish from the family Gobiidae were more dominant in larger *C. myriaster*. This suggests a variation in the dominant prey based on the size of *C. myriaster*. Given these previous findings, the observed differences in vitamin K content among the different size groups of *C. myriaster* in this study could be attributed to the varying dominant prey species and their subsequent influence on vitamin K content.

Upon analyzing outliers in the phylloquinone content of small *C. myriaster* samples using the interquartile range (IQR), the December value was

identified as an outlier, as it exceeded the maximum range. Consequently, statistical analysis was divided into two parts: one considering 11-month vitamin K content values excluding December (Jan-Nov) and another including the full year with December (Jan-Dec). The results of this significance analysis are detailed in Table 4. Contrary to the December values, which showed no significant size-based difference for phylloquinone, the analysis excluding December revealed highly significant differences ($p < 0.001$) by size for phylloquinone, menaquinone, and total vitamin K. This suggests that the overall vitamin K content in *C. myriaster* varies by size. When examining the December samples in isolation, there are significant differences in phylloquinone ($p < 0.001$), menaquinone ($p < 0.01$), and total vitamin K ($p < 0.001$) contents between large and small *C. myriaster* samples, based on the size of the fish. These distinctions are clearly demonstrated in Fig. 3(a), (b), and (c).

3.4. Correlation between vitamin K content and fat content in *C. myriaster* by size and season

Figs. 4 and 5 display the results of a correlation analysis between the monthly changes in crude fat and vitamin K contents in *C. myriaster*. In large *C. myriaster* samples, both crude fat and total vitamin K contents peaked in July. Conversely, in small *C. myriaster* samples, the highest crude fat content was observed in January, while the peak phylloquinone content occurred in December. This suggests that the monthly variation in crude fat and vitamin K is similar across all sizes of *C. myriaster*. Upon analyzing the correlation between crude fat and vitamin K contents, phylloquinone did not exhibit a significant correlation with crude fat in either large or small *C. myriaster* samples ($p > 0.05$). However, excluding the December phylloquinone content in

Table 4. Significance differences in the vitamin K contents of conger eel depending on harvest season

Vitamin K contents ($\mu\text{g}/100\text{ g}$)	Size ¹⁾	Harvest period ²⁾			
		11 months (Jan–Nov)	t-value ⁴⁾	12 months (Jan–Dec)	t-value
Phylloquinone	Large	0.44±0.03	5.293***	0.46±0.15	0.715
	Small	0.27±0.02		0.41±0.49	
Menaquinone	Large	0.57±0.03	6.068***	0.57±0.11	6.322***
	Small	0.35±0.01		0.36±0.16	
Total vitamin K ³⁾	Large	1.01±0.05	6.583***	1.03±0.20	2.784**
	Small	0.63±0.03		0.77±0.57	

¹⁾Large conger eel: 80±5 cm, small conger eel: 50±5 cm.

²⁾The significance of vitamin K contents in conger eel was analyzed in two ways, excluding (11 months from Jan to Nov) and including (12 months from Jan to Dec) samples with a particularly high content observed in December.

³⁾Total vitamin K = Phylloquinone + Menaquinone.

⁴⁾p<0.05, **p<0.01, ***p<0.001 by t-test.

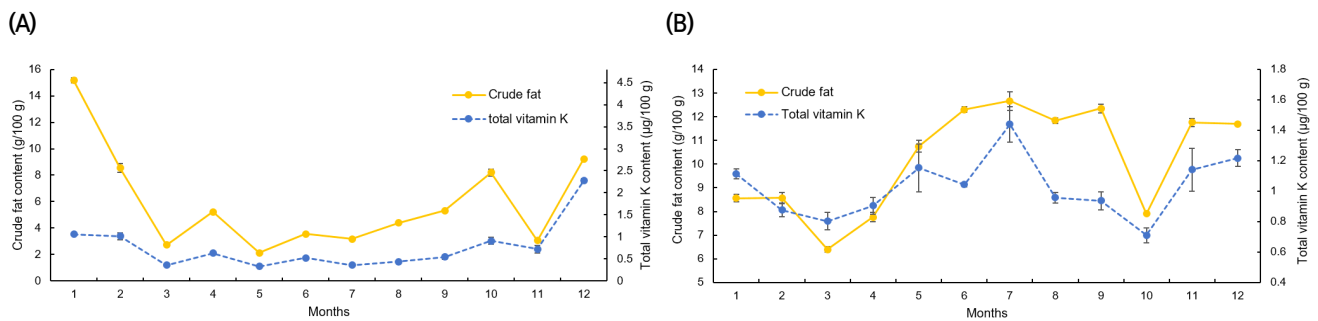


Fig. 4. Monthly variations of crude fat and total vitamin K content. (A), large conger eel; (B), small conger eel. Left y-axis: crude fat content (g/100 g) of conger eel, Right y-axis: Total vitamin K content ($\mu\text{g}/100\text{ g}$) of conger eel.

small *C. myriaster* samples, which was deemed an outlier deviating significantly from the overall data range, there was a significant correlation between crude fat and phylloquinone in small *C. myriaster* samples ($p<0.05$). Menaquinone displayed a strong positive linear relationship with crude fat ($r=0.730, 0.923$) across all sizes of *C. myriaster*, and total vitamin K also showed a clear positive correlation with crude fat in all sizes. This suggests that vitamin K and crude fat are significantly correlated. This finding aligns with the research of Ostermeyer and Schmidt (2001), who observed a positive correlation between vitamin K and fat content, noting that fish with higher fat content had higher levels of vitamin

K than those with lower fat content. Factors such as gonadal maturity, water temperature, and feeding influence the fat content of fish, while vitamin K content is known to be affected by fat content, season, feeding, and habitat (Oh et al., 1989; Ostermeyer and Schmidt, 2001; Udagawa and Yamashita, 2008). Thus, these two nutrients in fish appear to share similar influencing factors and are consequently thought to be correlated.

The notably higher phylloquinone content in small *C. myriaster* samples harvested in December appears to correlate with the peak crude fat content observed in January. Phylloquinone, a prenylated naphthoquinone, is synthesized only by plants, green

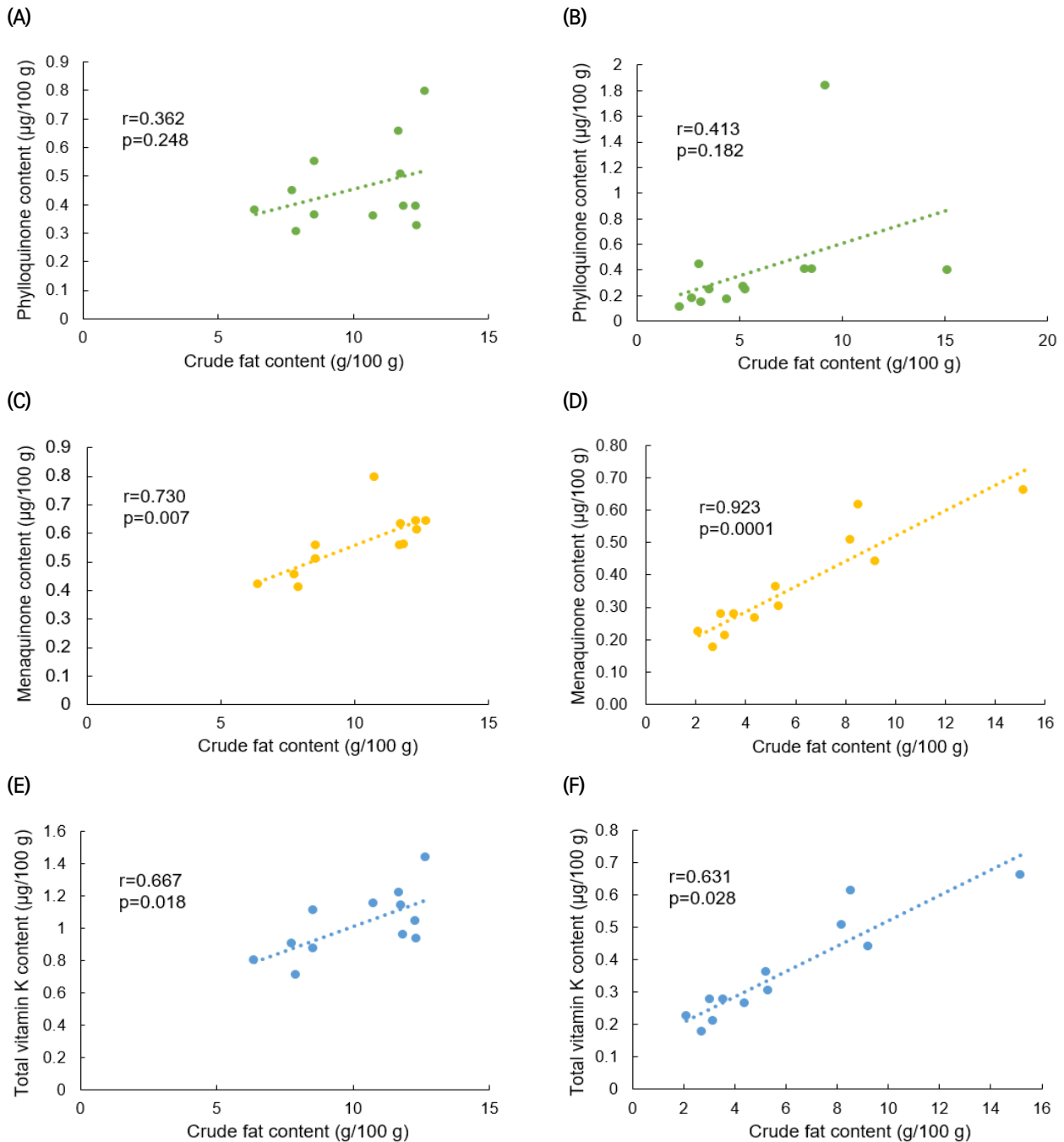


Fig. 5. Correlation between crude fat and vitamin K contents (phyloquinone, menaquinone, total vitamin K contents of conger eel) (Jan-Dec). (A), (C), (E) for large conger eel (80 ± 5 cm); (B), (D), (F) for small conger eel (50 ± 5 cm). r , Pearson correlation coefficient; p , significance probability.

algae, and certain cyanobacteria species. Unlike these organisms, animals obtain their phyloquinone through the consumption of plants (Basset et al., 2017; Reumann, 2013). Therefore, the phyloquinone

content in these fish is likely influenced by their diet, which may include phytoplankton, algae, or plankton-feeding herbivores. The December increase in phyloquinone content in small *C. myriaster*

samples is likely due to an increased dietary intake, while the January rise in crude fat content may be attributed to fat accumulation.

Previous studies have indicated that the nutritional composition of fish is affected by the spawning season (Kim et al., 2009; Lee et al., 1995; Park et al., 1999). According to the National Fisheries Research and Development Institute (2021), the spawning season for *C. myriaster* is in April-May. However, no significant changes were observed in either vitamin K or crude fat contents during this spawning season. As small *C. myriaster* individuals are immature and do not engage in spawning, the spawning season seems to have no impact on them. In contrast, large individuals are sedentary fish that do not expend much energy to recover from spawning, thus not necessitating fat accumulation (Jeong et al., 1998). Therefore, the crude fat content in *C. myriaster*, being a sedentary species, appears to be minimally influenced by the spawning season. Similarly, vitamin K content, which shows a high correlation with fat content, also seems to be largely unaffected by the spawning season.

Vitamin K and crude fat contents in *C. myriaster* were categorized into spring (March-May), summer (June-August), fall (September-November), and winter

(December-February) to determine seasonal variation, as shown in Table 5. Vitamin K content did not exhibit significant seasonal variation across all sizes of *C. myriaster*. While crude fat was significantly higher in winter, there were no notable changes in spring, summer, or fall, making it difficult to determine a clear pattern of seasonal variation. Comparing these findings with water temperature changes in the Geojedo waters near Tongyeong, as provided by the Korea Hydrographic and Oceanographic Agency (KHOA), it was observed that water temperatures were higher in summer ($26.7\pm 3.1^{\circ}\text{C}$) and fall ($23.7\pm 3.0^{\circ}\text{C}$), and lower in spring ($16.4\pm 1.8^{\circ}\text{C}$) and winter ($14.4\pm 1.0^{\circ}\text{C}$), indicating significant seasonal differences. However, vitamin K and crude fat contents in *C. myriaster* did not show significant seasonal variations, suggesting no substantial association with water temperature.

The escalating issue of global warming, marked by rising temperatures, is inducing various alterations in marine ecosystems. These changes include shifts in habitat, food chain structure, and the dominant species of marine organisms. Consequently, there are transformations in the quantity, size, and location of fishing grounds (Doney et al., 2012). In the context of this accelerating global warming,

Table 5. Crude fat and total vitamin K content of conger eel in relation to water temperature, harvest season and fish size

Contents	Size	Harvest season (average sea temperature, °C) ¹⁾				F-value
		Spring (16.4±1.8°C)	Summer (26.7±3.1°C)	Fall (23.7±3.0°C)	Winter (14.4±1.0°C)	
Crude fat (g/100g)	Large	8.30±0.07 ^{b2)}	12.27±0.17 ^a	10.67±0.07 ^{ab}	9.61±0.10 ^{ab}	2.379
	Small	3.36±0.04 ^b	3.71±0.02 ^b	5.52±0.14 ^b	10.97±0.13 ^a	6.452 ^{*3)}
Total vitamin K (µg/100 g)	Large	0.95±0.06 ^a	1.15±0.06 ^a	0.93±0.05 ^a	1.07±0.04 ^a	0.705
	Small	0.81±0.04 ^a	0.49±0.01 ^a	0.45±0.02 ^a	1.30±0.02 ^a	2.057

¹⁾Spring, Mar-May; summer, Jun-Aug; fall, Sep-Nov; winter, Dec-Feb. Average sea temperature of Geoje, Gyeongnam where conger eels were sampled was provided from Korea Hydrographic and Oceanographic Agency, KHOA, Korea (2023).

²⁾Means with different superscript letters in the same row are significantly different at p<0.05.

³⁾p<0.05.

studies like the current one, focusing on the size and seasonal variations in micronutrient content of *C. myriaster*, are expected to become increasingly significant. They will serve as a foundational basis for future research on the impacts of climate change on marine life.

In addition, this study is notable for being the first to provide reliable information on the vitamin K content of fishery resources that are consumed year-round in Korea. This has been achieved through rigorous method validation and analytical QC. The findings from this analysis can be instrumental in the development and enhancement of a national food nutrient database.

4. Conclusions

In this study, *C. myriaster*, a sedentary fish species available year-round in Korean waters, was sampled monthly over a year and sorted by size to analyze seasonal changes in vitamin K content and its correlation with fat content. Method validation and analytical QC were rigorously conducted to ensure data reliability over the extended analysis period. The HPLC-FLD method's analytical performance indicators, including specificity, linearity, LOD, limit of quantitation, precision, and accuracy, were evaluated. All parameters met the acceptance ranges of the AOAC guidelines, confirming the method's efficacy for analyzing vitamin K content in *C. myriaster*. QC chart management throughout the study affirmed the reliability of all sample analyses to the level of method validation. The analysis of vitamin K content in *C. myriaster* by size and month revealed that phyloquinone content peaked in July ($0.80 \pm 0.09 \mu\text{g}/100 \text{ g}$) for large samples and in December ($1.94 \pm 0.15 \mu\text{g}/100 \text{ g}$) for small samples. Similarly, menaquinone content was highest in May

($0.79 \pm 0.11 \mu\text{g}/100 \text{ g}$) for large samples and in January ($0.66 \pm 0.02 \mu\text{g}/100 \text{ g}$) for small samples. Total vitamin K was also higher in July ($1.44 \pm 0.12 \mu\text{g}/100 \text{ g}$) and December ($2.39 \pm 0.14 \mu\text{g}/100 \text{ g}$) for large and small samples, respectively, indicating that monthly content variations depended on the size of *C. myriaster*. Moreover, a significant difference in vitamin K content between sizes at the same harvest time was observed ($p < 0.05$). The correlation analysis between seasonal and size-specific crude fat and vitamin K content in *C. myriaster* showed that crude fat content was significantly correlated with menaquinone and total vitamin K contents ($p < 0.05$). This study provides reliable information on the size and seasonal variation of vitamin K in *C. myriaster*, which is consumed year-round in Korea. These findings can contribute to the national food nutrition database and aid in shaping future national health and nutrition policies.

Acknowledgements

This research was supported by a grant (R2023055) from Ministry National Institute of Fisheries Science in 2023.

Conflict of interests

The authors declare no potential conflicts of interest.

Author contributions

Methodology: Park J, Lee KH. Formal analysis: Park J, Lee KH, Templonuevo RMC. Validation: Park J, Yang J. Writing - original draft: Park J. Writing - review & editing: Park J, Chun J.

Ethics approval

This article does not require IRB/IACUC approval because there are no human and animal participants.

ORCID

Junhee Park (First author)

<https://orcid.org/0009-0002-2407-0188>

Kang-Hee Lee

<https://orcid.org/0000-0003-0839-8618>

Rea Mae Cuario Templonuevo

<https://orcid.org/0000-0002-5196-2395>

Jinwoo Yang

<https://orcid.org/0000-0002-7991-2218>

Jiyeon Chun (Corresponding author)

<https://orcid.org/0000-0002-0093-0203>

References

- AOAC. AOAC Guidelines for Single Laboratory Validation of Chemical Methods For Dietary Supplements and Botanicals. Association of Official Analytical Chemists International, Gaithersburg, MD, USA, p 18-25 (2002)
- Beset GJ, Latimer S, Fatihi A, Soubeyrand E, Block A. Phylloquinone (Vitamin K₁): Occurrence, biosynthesis and functions. *Mini Rev Med Chem*, 17, 1028-1038 (2017)
- Correia AT, Manso S, Coimbra J. Age, growth and reproductive biology of the European conger eel (*Conger conger*) from the Atlantic Iberian waters. *Fish Res*, 99, 196-202 (2009)
- Doney SC, Ruckelshaus M, Duffy JE, Barry JP, Chan F, English CA, Galindo HM, Grebmeier JM, Hollowed AB, Knowlton N, Polovina J, Rabalais NN, Sydeman WJ, Talley LD. Climate change impacts on marine ecosystems. *Ann Rev Mar Sci*, 4, 11-37 (2012)
- Hodges SJ, Akesson K, Vergnaud P, Obrant K, Delmas PD. Circulating levels of vitamins K₁ and K₂ decreased in elderly women with hip fracture. *J Bone Miner Res*, 8, 1241-1245 (1993)
- Huh SH, Kwak SN. Feeding habits of conger eel in the eelgrass (*Zostera marina*) bed in Kwangyang bay. *J Korean Fish Soc*, 31, 665-672 (1998)
- Hwang CH, Park YJ. Seasonal variation of species composition of fish by otter trawl in the coastal waters off Gijang, Busan, Korea. *Korean J Fish Aquat Sci*, 50, 429-436 (2017)
- Institute of Medicine. Dietary Reference Intakes: For Vitamin A, Vitamin K, Arsenic, Boron, Chromium, Copper, Iodine, Iron, Manganese, Molybdenum, Nickel, Silicon, Vanadium, and Zinc. National Academy Press, Washington DC, USA (2001)
- Iwamoto J, Takeda T, Ichimura S. Effect of combined administration of vitamin D₃ and vitamin K₂ on bone mineral density of the lumbar spine in postmenopausal women with osteoporosis. *J Orthop Sci*, 5, 546-551 (2000)
- Jeong BY, Choi BD, Lee JS. Seasonal variation in proximate composition, cholesterol and α -tocopherol content of 12 species of Korean fish. *Korean J Fish Aquat Sci*, 31, 707-712 (1998)
- Jeong YJ, Kim YA, Kwon YC. A study on the effect of osteoporosis knowledge, osteoporosis preventive behaviors and self-efficacy of middle aged women on health-related quality of life. *J Convergence Cult Technol*, 7, 107-116 (2021)
- Kanai T, Takagi T, Masuhiro K, Nakamura M, Iwata M, Saji F. Serum vitamin K level and bone mineral density in post-menopausal women. *Int J Gynaecol Obstet*, 56, 25-30 (1997)
- Kasper MJ, Garber M, Walsdorf K. Young women's knowledge and beliefs about osteoporosis. *Am J Health Educ*, 38, 186-193 (2007)
- KHOA, Korea. Available from: <https://khoa.go.kr/Main.do>. Accessed Sep. 25, 2023.
- Kim CW, Kim EO, Jeong HD, Jung CG, Park MW, Son SG. Variation of body composition and survival rate according to spawning of pacific oyster, (*Crassostrea gigas*) in Gamak Bay. *Korean J Fish Aquat Sci*, 42, 481-486 (2009)
- Kim D, Lee S, Kang Y, Shin J, Park JJ, Kim HJ. Comparison of vitamin K contents in different meats commonly consumed in Korea. *Korean J Food Sci Technol*, 54, 109-113 (2022)
- Kim H, Choi Y, Cho YS, Sung J, Ham H, Lee J. Comparison of extraction methods for

- determination of vitamin K₁ in vegetables. J Korean Soc Food Sci Nutr, 43, 1791-1795 (2014)
- Kim Y, Kim K, Kim KR, Kim JH, Lee D, Kwon S, Lee J, Jang KI, Kim BH, Sung J. Determination of vitamin K in Korean processed food and restaurant. J Korean Soc Food Sci Nutr, 51, 56-63 (2022)
- Kim Y, Lee E, Kim JN, Choi HJ. Age and growth of whitespotted conger (*Conger myriaster*) in the Southern Coastal Waters of Korea. Korean J Fish Aquat Sci, 44, 689-694 (2011)
- Lee HW, Hong BK, Sohn MH, Chun YY, Lee DW, Choi YM, Hwang KS. Seasonal variation in species composition of fish collected by trammel net around Dokdo, East Sea of Korea. Korean J Fish Aquat Sci, 43, 693-704 (2010)
- Lee KH, Park CS, Hong BI, Jung BC, Cho HS, Jea YG. Seasonal variation of nutrients in warty sea squirt (*Styela clava*). J Korean Soc Food Sci Nutr, 24, 268-273 (1995)
- Lee TW, Moon HT, Hwang HB, Huh SH, Kim DJ. Seasonal variation in species composition of fishes in the eelgrass beds in Angol Bay of the Southern Coast of Korea. Korean J Fish Aquat Sci, 33, 493-447 (2000)
- MFDS. Food code. Available from: <https://various.foodsafetykorea.go.kr/fsd/#/ext/Document/FC> Accessed Oct. 4, 2023
- Oh KS, Moon SK, Lee EH. Comparison of lipid components and amino acid composition of sea eel by size. Korean J Food Sci Technol, 21, 192-196 (1989)
- Oh TY, Lee JB, Seo YI, Lee JH, Choi JH, Kim JY, Lee DW. Seasonal variations in species composition by the stow nets and the stow net on boat fisheries in the Han River Estuary, Korea. J Korean Soc Fish Ocean Technol, 48, 452-468 (2012)
- Ostermeyer U, Schmidt T. Determination of vitamin K in the edible part of fish by high-performance liquid chromatography. Eur Food Res Technol, 212, 518-528 (2001)
- OSullivan S, Moriarty C, FitzGerald RD, Davenport J, Mulcahy MF. Age, growth and reproductive status of the European conger eel, *Conger conger* (L.) in Irish coastal waters. Fish Res, 64, 55-69 (2003)
- Park CK. Seasonal variation of proximate composition in edible portion of ark shell (*Scapharca subcrenata*). J Korean Soc Food Sci Nutr, 28, 1226-1229 (1999)
- Park JS. Applications of green extraction technologies: Characterization of lipids and amino acids from conger eel (*Conger myriaster*) using sub and supercritical fluids. MS Thesis, Pukyong National University, Korea, p 35-36 (2022)
- Price PA, Williamson MK. Primary structure of bovine matrix Gla protein, a new vitamin K-dependent bone protein. J Biol Chem, 260, 14971-14975 (1985)
- Reumann S. Biosynthesis of vitamin K₁ (Phylloquinone) by plant peroxisomes and its integration into signaling molecule synthesis pathways. Subcell Biochem, 69, 213-229 (2013)
- Ryu KY, Shim SL, Kim W, Jung MS, Hwang IM, Kim JH, Hong CH, Jung CH, Kim KS. Analysis of the seasonal change of the proximate composition and taste components in the conger eels (*Conger myriaster*). J Korean Soc Food Sci Nutr, 38, 1069-1075 (2009)
- Shin A, Kim D, Kang TW, Oh JH, Lee J, Hong JS. Seasonal fluctuation of meiobenthic fauna community at Keunso Tidal Flat in Taejeon, Korea. J Korean Soc Oceanogr, 21, 144-157 (2016)
- Udagawa M, Yamashita Y. Difference in vitamin K concentration in Japanese eel *Anguilla japonica* from different cultured areas. Fish Sci, 74, 690-692 (2008)
- Xavier JC, Cherel Y, Assis CA, Sendao J, Borges TC. Feeding ecology of conger eels (*Conger conger*) in north-east Atlantic waters. J Mar Biol Assoc, 90, 493-501 (2010)