



ARTICLE

A Highly Sensitive Indirect Enzyme-Linked Immunosorbent Assay (ELISA) Based on a Monoclonal Antibody Specific to Thermal Stable-Soluble Protein in Pork Fat for the Rapid Detection of Pork Fat Adulterated in Heat-Processed Beef Meatballs



Received August 12, 2023
Revised September 8, 2023
Accepted September 14, 2023

*Corresponding author : Won-Bo Shim
Division of Food Science and Technology,
Gyeongsang National University, Jinju 52828,
Korea
Tel: +82-55-772-1902
Fax: +82-55-772-1909
E-mail: wbslim@gnu.ac.kr

*ORCID
Sol-A Kim
<https://orcid.org/0000-0002-4055-7511>
Jeong-Eun Lee
<https://orcid.org/0000-0002-0790-8578>
Dong-Hyun Kim
<https://orcid.org/0000-0002-5490-0448>
Song-min Lee
<https://orcid.org/0000-0003-0527-6332>
Hee-Kyeong Yang
<https://orcid.org/0009-0006-1139-502X>
Won-Bo Shim
<https://orcid.org/0000-0003-1800-6091>

Sol-A Kim¹, Jeong-Eun Lee², Dong-Hyun Kim¹, Song-min Lee¹, Hee-Kyeong Yang¹,
and Won-Bo Shim^{2,3,4,*}

¹Division of Applied Life Science, Graduate School, Gyeongsang National University, Jinju 52828, Korea

²Institute of Smart Farm, Gyeongsang National University, Jinju 52828, Korea

³Division of Food Science and Technology, Gyeongsang National University, Jinju 52828, Korea

⁴Institute of Agriculture and Life Science, Gyeongsang National University, Jinju 52828, Korea

Abstract Processed foods containing pork fat tissue to improve flavor and gain economic benefit may cause severe issues for Muslims, Jews, and vegetarians. This study aimed to develop an indirect enzyme-linked immunosorbent assay (iELISA) based on a monoclonal antibody specific to thermal stable-soluble protein in pork fat tissue and apply it to detect pork fat tissue in heat-processed (autoclave, steam, roast, and fry) beef meatballs. To develop a sensitive iELISA, the optimal sample pre-cooking time, coating conditions, primary and secondary dilution time, and various buffer systems were tested. The change in the iELISA sensitivity with different 96-well microtiter microplates was confirmed. The detection limit of iELISA performed with an appropriate microplate was 0.015% (w/w) pork fat in raw and heat-treated beef. No cross-reactions to other meats or fats were shown. These results mean that the iELISA can be used as an analytical method to detect trace amounts of pork fat mixed in beef.

Keywords pork fat tissue, indirect enzyme-linked immunosorbent assay (iELISA), thermal stable-soluble protein (TSSP), monoclonal antibody

Introduction

Pork fat and meat are generally used as ingredients for sausages, Frankfurt sausages, canned meat, and other foods to improve flavor and texture (Hsieh and Gajewski,

2016). Food manufacturers use pork fat tissue as an ingredient to increase weight and taste because it is cheap and readily available (Aida et al., 2005). Meat mixed with pork fat tissue or other meat is a general method used in food industries to gain economic benefit. In 2013, after equine DNA was found in frozen beef hamburger patties sold in several supermarkets in Ireland and the UK, a full investigation found pork DNA (O'Mahony, 2013). In addition, pork DNA was also detected in chocolate, which had received JAKIM (Jabatan Kemajuan Islam Malaysia) halal certification in Malaysia in 2014 (Jaques, 2015). In Korea, beef jerky labeled as 100% beef has been found to contain 45% pork (Han et al., 2020). In particular, pork is much cheaper than beef in Korea, so beef hamburger patties and beef tteok-galbi mixed with pork meat or fat are often sold as pure beef products (Heo et al., 2014).

Pork fat and meat are not harmful to health, but meat and non-meat products containing pork fat and flesh can cause severe problems for Muslims, Jews, and vegetarians (Al-Teinaz, 2020). In addition, food fraud using pork fat tissue is challenging to detect because it resembles other animal fats once mixed with ground meat and food (Kim et al., 2017). Therefore, reliable and sensitive analytical methods are required to detect and identify pork fat and meat that can be mixed in food. Various analytical methods, including immunoassay, molecular techniques, and chromatographic methods, have been well-developed for detecting porcine meat (Hsieh and Ofori, 2014; Zvereva et al., 2015). A few methods, such as electronic nose, gas chromatography, and Fourier transform infrared spectroscopy, have been developed for pork fat and lard detection (Man et al., 2005; Nurjuliana et al., 2011; Rohman et al., 2011). However, immunoassays for detecting pork fat tissue have not yet been reported.

We previously reported the antigenicity of thermal stable-soluble proteins (TSSPs) in pork fat and meat, and the protein profiles from the pork fat and meat extracts by non-heating treatments (Kim et al., 2016; Kim et al., 2017). Additionally, we reported the development of monoclonal antibodies specific to TSSP from pork fat tissues (Kim et al., 2017). This study reports an indirect enzyme-linked immunosorbent assay (iELISA) based on the previously reported monoclonal antibody (mAb) to detect mixed pork fat tissue in heat-processed beef meatballs. This study, we investigated the adsorption rate of proteins to various 96-well microtiter microplates to improve the sensitivity of the iELISA and applied it to detect pork fat tissue mixed in beef meatballs heat-processed such as autoclaving, steaming, roasting, and frying.

Materials and Methods

Materials

Fats (pork, beef, chicken, duck, sheep horse, and goat), meats (pork, beef, chicken, duck, turkey, sheep, horse, and goat), egg, and soybean were purchased from local supermarkets and farms (Jinju, Korea). Bovine serum albumin (BSA) and ABTS [2,2'-azino-bis-(3-ethyl-benzothiazoline-6-sulfonic acid)] were obtained from Sigma-Aldrich (St. Louis, MO, USA). Tris [2-Amino-2-(hydroxymethyl)-1,3-propanediol] was purchased from Roche (Indianapolis, IN, USA). Goat anti-mouse IgG (H+L) peroxidase conjugate was obtained from Thermo Fisher Scientific (Rockford, IL, USA). The filter paper (Whatman No. 4) was purchased from Whatman (Buckinghamshire, UK). 96-well Nunc-Immuno MaxiSorp® (Thermo Fisher Scientific), 96-well ELISA microplate, MICROLON® 600 and 96-well single-break strip ELISA plates, MICROLON® 600 (Greiner Bio-One, Kremsmüenter, Austria), 96-well ELISA plate (Jet Biofill, Guangzhou, China), and 96-well immunoplate strip (SPL Life Sciences, Pocheon, Korea) were used to investigate the adsorption rate of proteins depending on different microtiter plates. The 12-channel microplate washer and Spark 10M multimode microplate reader were obtained from TECAN Trading AG (Switzerland, Männedorf).

Monoclonal antibody (mAb) specific to thermal stable-soluble protein (TSSP) in pork fat tissue

Our previous report presented the monoclonal hybridoma PF 2B8-31 which produces a mAb specific to TSSP in porcine adipose tissue (Kim et al., 2017). For mass production of mAb, the hybridoma cell was grown in 10% FBS/DMEM, and 1×10^7 cell/mL of the hybridoma was intraperitoneally injected into BALB/c mice that had been pretreated with an intraperitoneal injection of 0.5 mL pristane. After 1 week, ascites fluid was obtained from the mice and purified by saturated ammonium sulfate precipitation followed by protein A affinity chromatography. The purified mAb was lyophilized and stored at -20°C before use. All animal treatments were performed with approval from the Institutional Animal Care and Use Committee (IACUC) at the researcher's institution in Gyeongsang National University, Jinju, Korea (GNU-221103-M0153-01).

Extraction of thermal stable-soluble protein (TSSP)

This study used raw and cooked fat and meat samples. Pure fats were prepared by trimming off visible meat and connective tissues, and lean meats were obtained by trimming off visible fat and connective tissues. In order to prepare cooked samples, pure fat and meats were placed in a glass beaker and then double-heated in boiling water for 15 min. Fat and meat without any processing were used as raw samples. For TSSP extraction, 10 g of cooked and raw fat and meat were mixed with 20 mL of 0.025 M Tris-buffered saline (TBS, pH 7.4) and homogenized for 5 min using a homogenizer (D-500, Wigggen Hauser, Berlin, Germany). The homogenized samples were heated at 100°C for 15 min, cooled to room temperature, and centrifuged at $3,220 \times g$ at 4°C for 15 min. The supernatant containing TSSP was filtered through Whatman No. 1 filter paper. The fat and meat samples were extracted at 4°C for 1 h, prepared as described above, and used as control tests. The total soluble protein in the filtrates was quantified using a Quick Start™ Bradford protein assay kit (Bio-Rad Laboratories, Hercules, CA, USA).

Optimization of an indirect enzyme-linked immunosorbent assay (iELISA) for the analysis of thermal stable-soluble protein (TSSP) in pork fat tissue

An iELISA based on PF 2B8-31 mAb for the detection of TSSP in pork fat tissue was optimized by checking the incubation temperature (4°C and 37°C), time (1 h and overnight) and buffers for the coating and blocking steps, as well as the dilution times of PF 2B8-31 mAb and a second antibody and the time for color development. First, five buffers [0.05 M phosphate-buffered saline (PBS, pH 7.4), 0.1 M carbonate buffer (pH 9.6), 0.5 M sodium chloride (NaCl, pH 6.5), 0.025 M TBS (pH 7.4), and 0.02 M Tris-hydrochloride (Tris-HCl, pH 7.4)] were tested as a dilution buffer for the extracts, which are used as tested samples. Ten grams of each pork fat tissue and beef meat were extracted by the method described above and used as 100% pork fat and 100% beef meat solutions, respectively. The standard pork fat tissue solutions (100%, 30%, 10%, 3%, 1%, 0.3%, 0.1%, 0.03%, and 0%, w/w) were prepared by diluting 100% pork fat with 100% beef meat solution. The wells of the microplate were coated using the extracts of pork fat tissue (100%, 30%, 10%, 3%, 1%, 0.3%, 0.1%, 0.03%, and 0%, w/w) and incubated at 4°C overnight or 37°C for 1 h. Two different blocking buffers, skim milk and BSA (0.5%–2%), were used to investigate blocking effects on the residual surface of the wells coated with extracts. The purified mAb 2B8-31 diluted with PBS (1:1,000, 1:2,000, 1:4,000, and 1:6,000) and horseradish peroxidase-conjugated goat anti-mouse IgG diluted with PBS (1:2,000, 1:4,000, 1:6,000, and 1:8,000) were tested to optimize the iELISA. Finally, a step of color development was performed at 37°C for 10–30 min. After performing the iELISA, absorbance was measured at 405 nm, and each condition showing the highest sensitivity was chosen as an optimal condition for the iELISA. Additionally, the test sample exhibiting an absorbance of 0.2 less, corresponding to the absorbance of the negative sample+5 SD of the absorbance of the negative sample, was judged to be negative in iELISA (Kim et al., 2023).

The sensitivity of the PF 2B8-31 mAb based-iELISA was measured by analyzing the standard pork fat tissue solutions (100%, 30%, 10%, 3%, 1%, 0.3%, 0.1%, 0.03%, and 0%, w/w). Fats (pork, beef, chicken, duck, sheep horse, and goat), meats (pork, beef, chicken, duck, turkey, sheep, horse, and goat), egg yolk, and egg white were also extracted with the same method previously described and analyzed to investigate the specificity of the iELISA.

In addition, five kinds of 96-well microplates (96-well Nunc-Immuno MaxiSorp[®], 96-well ELISA microplate, 96-well single-break strip ELISA plate, 96-well ELISA plate, 96-well immunoplate strip) were used to determine the rate of protein adsorption to the wells, which can affect the sensitivity of the iELISA. The sample solution (100%, 30%, 10%, 3%, 1%, 0.3%, 0.1%, 0.03%, 0.01%, and 0% w/w) was coated on each well, reacted at 37°C for 1 h, and washed 3 times with PBST. After blocking each well with 1% BSA (200 μ L), the blocking step was carried out at 37°C for 1 h, and the wells were washed 4 times with PBST. A 1,000-fold diluted PF 2B8-31 mAb solution was added to each well, reacted at 37°C for 1 h, and washed 5 times with PBST. A secondary antibody (horseradish peroxidase-conjugated goat anti-mouse IgG) diluted 1:5,000 in PBS was put into each well, reacted at 37°C for 1 h, and washed 6 times with PBST. Then the color development was performed by adding a substrate solution (100 μ L) [3 mg of 2,2'-azino-bis-(3-ethyl-benzothiazoline-6-sulfonic acid) and 7 μ L of 30% hydrogen peroxide in 10 mL of citrate buffer, pH 4.0] to the wells and incubating at 37°C for 30 min. The protein adsorption ratio of each microtiter plate well was evaluated through absorbance measurement at 405 nm. A 96-well microtiter microplate well showing a constant and high protein adsorption rate was selected to enhance the sensitivity of the PF 2B8-31 mAb based-iELISA.

Detection of pork fat tissue mixed in beef meatballs

Beef meatballs were prepared using a slightly modified method using reference (Huang et al., 2005). The beef and pork fat were separately cut into small pieces and ground using a commercial meat grinder. Based on 100 g, pork fat to beef meat ratios were 100%, 30%, 10%, 3%, 1%, 0.3%, 0.1%, 0.03%, and 0% (w/w), and beef meatballs were prepared by well mixing pork fats in beef meat and weighted into 10 g.

The beef meatballs (10 g) prepared were processed by autoclaving, steaming, roasting, and frying with different processing times and used to validate whether the pork fat tissue could be detected by the iELISA based on PF 2B8-31 mAb (Li et al., 2020; Mandli et al., 2018). Ten grams of the processed samples were put into a glass flask, crushed using a glass rod, and mixed with 20 mL of 0.025 M TBS (pH 7.4). The mixtures were vortexed for 30 sec and heated in boiling water for 15 min. The samples were centrifuged at 4°C for 15 min at 3,220 \times g, the supernatants were filtered through a filter paper (Whatman No. 4), and the filtrates were subjected to the iELISA.

Statistical analysis

All data was performed in triplicate and analyzed using SigmaPlot 10.0.1 for Windows (Systat Software, Palo Alto, CA, USA) and Microsoft Excel (Microsoft, Redmond, WA, USA). The analysis of variance (ANOVA) with the Tukey test, equality of variances, and descriptive statistics functions of SPSS 27.0 software (IBM, Chicago, IL, USA) were used to clarify significant differences among the groups.

Results and Discussion

Establishment of thermal stable-soluble protein (TSSP) extraction method from heat-processed fat and meat

For efficient extraction of TSSP from fat and meat samples, raw and processed fats and meats were extracted at 4°C for 1 h

or 100°C for 15 min. The concentration of total soluble protein in the extracts is presented in Table 1. When raw fat and meat were extracted, the total protein concentrations of the extracts through the cold extraction (4°C for 1 h) ranged from 3.2 to 17.2 mg/mL, which were much higher than those (0.3–1.9 mg/mL) obtained of the extract through the hot extraction (100°C for 15 min). Meanwhile, in the case of cooked fat and meat, the total protein concentrations of the extracts through the cold extraction ranged from 0.04 to 0.8 mg/mL, which were much lower than the total protein concentration (0.1–1.0 mg/mL) obtained through the hot extraction method. Notably, the total soluble protein concentration of the processed fat and meat extracts by hot extraction was much higher than that of the extracts treated with cold extraction. The hot extraction may have increased the protein extraction efficiency because the fat and meat tissue are expanded by heat to form a space, and the extraction buffer penetrates this space to increase the contact area (Kim et al., 2023). This result means that hot extraction is more effective than cold extraction for extracting TSSP to be analyzed from processed fat and meat. Therefore, the hot extraction method (100°C for 15 min) was applied to the samples used in the subsequent experiments.

Development and validation of the indirect enzyme-linked immunosorbent assay (iELISA) based on PF 2B8-31 monoclonal antibody (mAb) to detect pork fat tissue protein

The PF 2B8-31 mAb based-iELISA was optimized by key experimental factors, such as coating, blocking, primary antibody, and secondary antibody steps. The standard pork fat tissue solutions (0%, 10%, 30%, and 100%, w/w) were prepared and used as representative samples to optimize the iELISA. This study, used 5 kinds of buffers [0.05 M PBS (pH 7.4), 0.1 M carbonate buffer (pH 9.6), 0.5 M NaCl (pH 6.5), 0.025 M TBS (pH 7.4), and 0.02 M Tris-HCl (pH 7.4)] as extraction buffers to compare the extraction efficiency of TSSP from pork fat tissues. The samples (5 g) were homogenized with 10 mL of the buffers in a glass tube and extracted for 15 min in boiling water. After cooling at room temperature, the samples underwent centrifugation and filtration according to the previously mentioned. The filtered samples were used for coating the 96-well microplates and analyzed by iELISA. Supplementary Fig. S1 shows the extraction effect and antigenicity changes of pork fat TSSP extracted from beef meatballs by the 5 extraction buffers. In the 100% pork fat tissue sample, 0.5 M NaCl and 0.025 M TBS showed the highest and most similar absorbance, but in the case of 30% and 10% (w/w) pork fat tissue in beef meat, the absorbance in 0.025 M TBS buffer was significantly higher than 0.5 M NaCl. Although 0.05 M PBS

Table 1. Protein concentration of pork, beef, and chicken meats and fat extract

Samples ¹⁾		Protein concentration (mg/mL)			
		Cold extraction ²⁾		Hot extraction	
		Raw	Cooked	Raw	Cooked
Pork	Meat	6.0±0.31 ^{bcd}	0.8±0.10 ^{ac}	1.4±0.05 ^{ab}	1.0±0.05 ^a
	Fat	3.9±0.12 ^{bcd}	0.04±0.01 ^{acd}	1.9±0.04 ^{abd}	0.4±0.08 ^{abc}
Beef	Meat	9.2±0.62 ^{bcd}	0.4±0.09 ^{ac}	1.4±0.20 ^{abd}	0.5±0.05 ^{ac}
	Fat	3.3±0.23 ^{bcd}	0.1±0.01 ^a	0.3±0.02 ^a	0.1±0.09 ^a
Chicken	Meat	17.2±0.84 ^{bcd}	0.2±0.09 ^a	1.0±0.10 ^a	0.3±0.10 ^a
	Fat	3.2±0.80 ^{bcd}	0.1±0.01 ^a	0.4±0.06 ^a	0.2±0.07 ^a

¹⁾ Prepare 10 g of fat and meat (cooked and raw), homogenize and mix with 20 mL of 0.025 M TBS (pH 7.4).

²⁾ Cold extraction: samples were extracted at 4°C for 1 h, hot extraction: samples were extracted at 100°C for 15 min.

^{a-d} Distinct letters indicate significant differences within extraction methods (cold and hot) and samples (raw and cooked) in meat and fat groups (p<0.01). TBS, Tris-buffered saline.

and 0.02 M Tris-HCl showed lower absorbance values in 100% pork fat tissue than 0.5 M NaCl, both buffers showed higher absorbance values in 30% and 10% (w/w) pork fat tissue in beef meat than 0.5 M NaCl. However, 0.025 M TBS was the most effective buffer for the extraction effect and antigenicity improvement for pork fat TSSP. In this study, heat treatment was performed in boiling water for 15 min to extract pork fat TSSP. The result demonstrated that the extraction effect and antigenicity of pork fat TSSP differed by buffers and heat treatment. The results also showed a tendency similar to those reported (Fowler et al., 2012), indicating that the immunoreactivity of proteins could be recovered by heating in buffers at high temperatures (Fowler et al., 2011).

The optimized conditions of PF 2B8-31 mAb based-iELISA were as follows: 0.025 M TBS (pH 7.4) as an extraction and coating buffer, 0.5% skim milk as a blocking solution, PF 2B8-31 mAb diluted 1:2,000 (0.05 $\mu\text{g}/100 \mu\text{L}/\text{well}$) in PBS as a primary antibody, and horseradish peroxidase-conjugated goat anti-mouse IgG diluted 1:5,000 (0.04 $\mu\text{g}/100 \mu\text{L}/\text{well}$) in PBS as a secondary antibody. The incubation temperature and time for all steps of the optimized PF 2B8-31 mAb based-iELISA were the same as in Optimization of an indirect enzyme-linked immunosorbent assay (iELISA) for the analysis of thermal stable-soluble protein (TSSP) in pork fat tissue.

The sensitivity of the optimized ELISA was verified by analyzing extracts of various concentrations (100%, 30%, 10%, 3%, 1%, 0.3%, 0.1%, 0.03%, and 0%, w/w) of pork fat in beef meat. Fig. 1A shows that the iELISA can detect 0.1% (w/w) pork fat in beef meat samples. Table 2 compares the sensitivities and target to complete tests in the iELISA and 3 kinds of commercialized kits [Porcine trace rapid test Kit (7FoodPillars), XEMATest pork fat/blood (XEMATest), ELISA-TEKTM cooked meat pork species Kit (R-Biopharm AG)]. The sensitivities of the three commercialized kits were reported to be 0.5%–2% (w/w). Given the results above, the developed iELISA has been confirmed to be more sensitive than the current commercialized kits. Eighteen foods, including pork fat and meat, other meats (beef, chicken, duck, turkey, sheep, horse, and goat) and fats (beef, chicken, duck, sheep, horse, and goat), egg yolk, egg white, and soybeans were tested by the iELISA

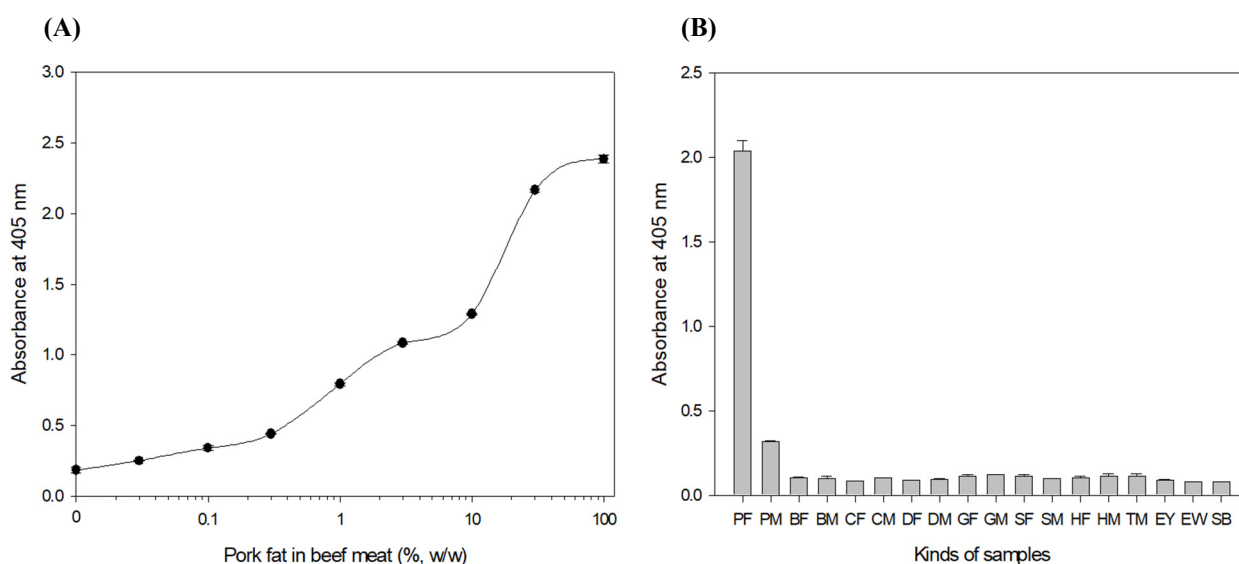


Fig. 1. The standard curve of the iELISA based on PF 2B8-31 mAb for the rapid detection of pork fat tissue in beef meatballs (A) and cross-reactivity of the iELISA method to other foods (B). One-way ANOVA with the Tukey test ($p < 0.01$). Values represented as mean \pm SD ($n=3$). PF, pork fat; PM, pork meat; BF, beef fat; BM, beef meat; CF, chicken fat; CM, chicken meat; DF, duck fat; DM, duck meat; GF, goat fat; GM, goat meat; SF, sheep fat; SM, sheep meat; HF, horse fat; HM, horse meat; TM, turkey meat; EY, egg yolk; EW, egg white; SB, soybean; iELISA, indirect enzyme-linked immunosorbent assay; mAb, monoclonal antibody; ANOVA, analysis of variance.

Table 2. Comparison of the iELISA developed in this study with other commercial kits

Variable	Commercial kit No. 1 ¹⁾	Commercial kit No. 2	Commercial kit No. 3	This study
Detection technique	Lateral flow assay	Lateral flow assay	Sandwich ELISA	Indirect ELISA
Target	Raw meat, processed meat, fat, oil, gelatin, prior sending	Porcine serum albumin	Cooked pork meat	TSSP in pork fat
Step required	2	2	4	5
Limit of detection	1%–2%	0.5%	1%	0.015%

¹⁾ Commercial kits No. 1: Porcine Trace Rapid Test Kit Fat (#RHAL01-03-020) by 7FoodPillars, No. 2: XEMATest Pork fat/blood (#X316) by XEMATest, and No. 3: ELISA-TEK™ Cooked Meat Pork Species Kit (#510621) by R-Biopharm AG. iELISA, indirect enzyme-linked immunosorbent assay; TSSP, thermal stable-soluble protein.

(Fig. 1B). The iELISA analysis obtained the highest OD value (2.0) from the pork fat tissue sample, and around a 0.3 OD value was shown in the pork meat sample. However, most OD values were lower than 0.2 for the other foods, indicating no cross-reaction with other foods (Hendrickson et al., 2021).

Selection of 96-well microplate for an indirect enzyme-linked immunosorbent assay (iELISA)

This study, developed an iELISA based on PF 2B8-31 mAb specific to TSSP in pork fat tissue. A 96-well microplate showing high absorbance, which means high protein adsorption from extracts, was chosen to develop the iELISA. Fig. 2 shows the absorbance values of iELISA performed with 100%, 30%, 10%, 3%, 1%, 0.3%, 0.1%, 0.03%, 0.01%, and 0% (w/w) pork fat in beef meat. Plate 4 showed the highest absorbance at concentrations of 10%, 1%, and 0.1% pork fat extracts and low absorbance in the 0% sample. This result means that plate 4 possesses a high protein adsorption rate for the target protein in the extracts and provides the highest sensitivity (LOD: 0.015%, w/w). This result also demonstrated that selecting

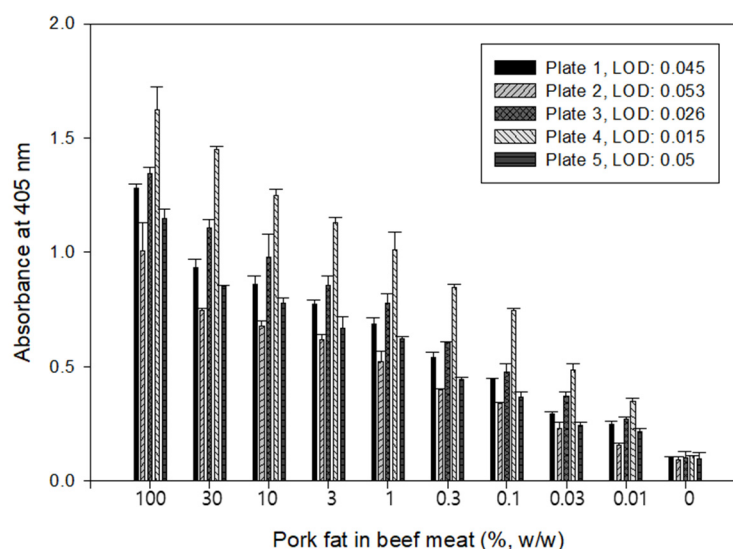


Fig. 2. Comparison of the sensitivity of the iELISA based on PF 2B8-31 mAb on different 96-well microtiter microplates. Plate 1: 96-well Nunc-Immuno MaxiSorp® (Thermo Fisher Scientific), Plate 2: 96-well ELISA microplate (Greiner Bio-One), Plate 3: 96-well single-break strip ELISA plate (Greiner Bio-One), Plate 4: 96-well immunoplate strip (SPL Life Sciences), Plate 5: 96-well ELISA plates (Jet Biofill). One-way ANOVA with the Tukey test ($p < 0.05$). Values represented as mean \pm SD ($n = 3$). iELISA, indirect enzyme-linked immunosorbent assay; mAb, monoclonal antibody; ANOVA, analysis of variance.

an appropriate 96-well microplate for sample types is critical in optimizing an iELISA. Therefore, plate 4 was chosen to improve the sensitivity of PF 2B8-31 mAb based-iELISA to detect pork fat tissue.

In order to measure the stability of protein adsorption on 96-well microplate 4, the extracts with concentrations of 1%, 0.1%, 0.01%, and 0% (w/w) pork fat in beef meat were coated 10 times on the wells and analyzed within a day (intra-assay). In addition, the same sample was coated and tested once a day for 10 days (inter-assay; Chunsheng et al., 2018). Table 3 shows the absorbance values obtained by the PF 2B8-31 mAb based-iELISA performed daily and for 10 days with 1% to 0% (w/w) pork fat extracts. Each experiment showed similar absorbance values indicating that a certain amount of the target protein in the extract was adsorbed to the well, even if the target protein was present in the food matrix. However, since all plates tested showed similar performance on the iELISA based on PF 2B8-31 mAb, it could not be concluded that one 96-well microplate is superior to the others. Thus, iELISA with commercial 96-well microplates exhibiting high and uniform protein adsorption can be available for sensitively detecting or identifying pig adipose tissue.

Sandwich ELISA formats have been usually used to detect large macromolecules, such as bacteria and proteins, and have superior sensitivity and reliability compared to the iELISA. In sandwich ELISA, capture and detector antibodies are used, requiring more time and cost to be developed. Utuk et al. (2012) reported that iELISA, which uses a single antibody, is also reproducible and cheaper than sandwich ELISA. The iELISA developed in this study also has high reproductivity and sensitivity compared to commercial kits based on sandwich assay format. Therefore, the iELISA can be used to analyze foods that contain pork fat but are unlabeled.

Detection of pork fat tissue in heat-processed beef meatballs

In the food and livestock industries, heat treatments such as cooking and pasteurization are essential to process products and ensure safety. Heat treatment can denature and insolubilize most soluble proteins, and target proteins that are not heat-stable soluble proteins may become undetectable in an immunoassay. Therefore, in order to evaluate the effectiveness of the iELISA developed in this study, beef meatballs containing pork fat tissue (100%, 30%, 10%, 3%, 1%, 0.3%, 0.1%, 0.03%, and 0%, w/w) with or without heat-treatment by autoclaving, steaming, roasting, and frying were tested (Stachniuk et al., 2021).

Fig. 3 shows the shapes of beef meatballs containing different amounts of pork fat tissue after heat treatments and the PF 2B8-31 mAb based-iELISA results for the beef samples. Samples autoclaved for 5 to 15 min and samples steamed for 20 to 40 min showed similar absorbance values at all concentrations of pork fat tissue in the beef meatballs in the PF 2B8-31 mAb based-iELISA. The ELISA can detect 0.1% (w/w) pork fat tissue in autoclaved and steamed beef meatballs. The iELISA

Table 3. Intra- and inter-assay coefficients of variations (CV) for pork fat tissue efficiency and homeostasis to the wells of the plate

Samples	Con. (%)	Intra-assay		Inter-assay	
		Mean±SD	CV (%) ¹⁾	Mean±SD	CV (%)
Pork fat tissue	1	1.01±0.012	1.42	1.0±0.009	1.04
	0.1	0.75±0.008	1.34	0.75±0.007	1.31
	0.01	0.34±0.006	3.46	0.34±0.005	2.84
	0	0.11±0.005	4.60	0.11±0.004	3.71

¹⁾ Intra-assay variabilities were based on 10 replicate measurements with pork fat in beef meat a day, and inter-assay variabilities were based on 10 replicate measurements with pork fat in beef meat for 10 days.

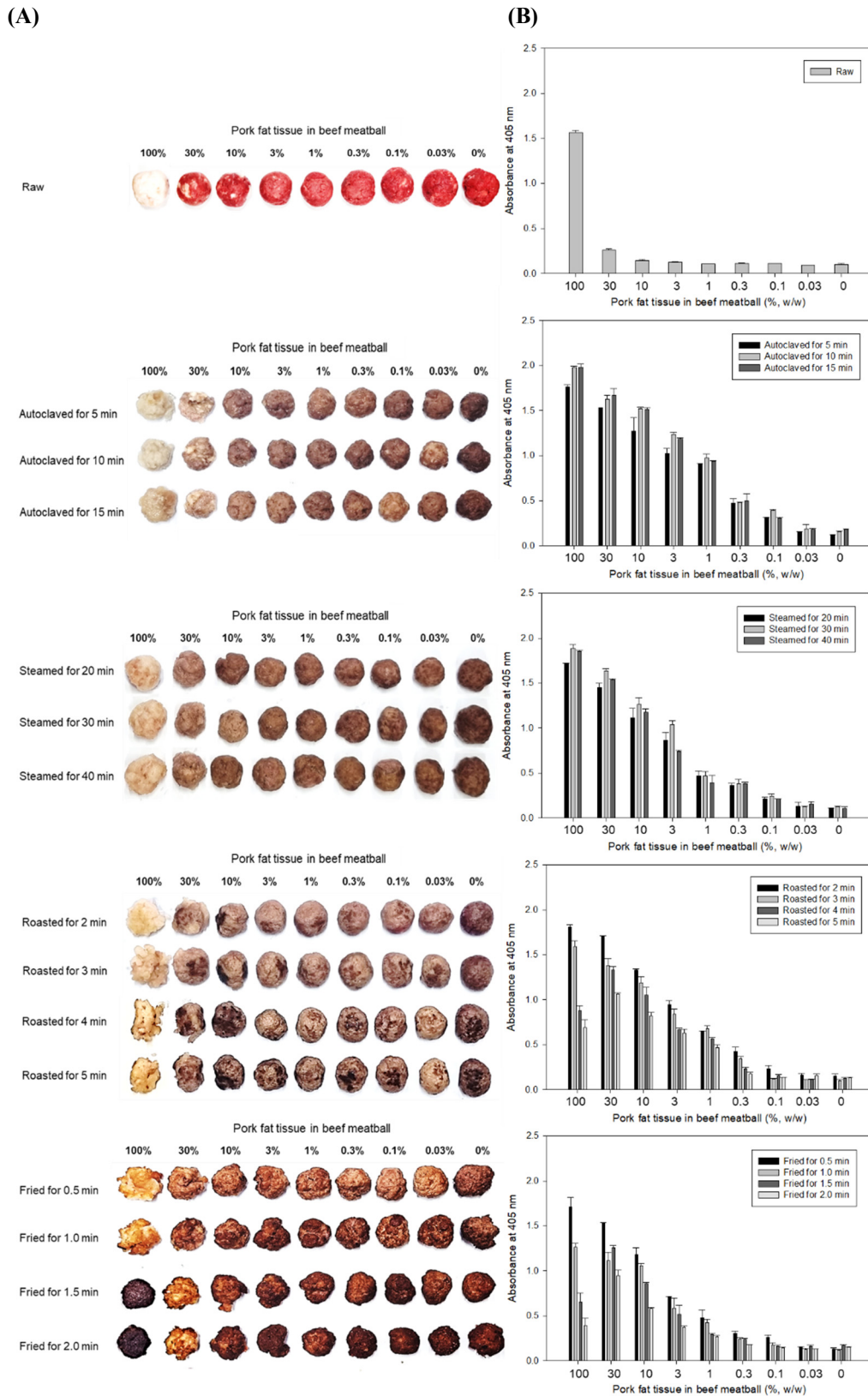


Fig. 3. Processed beef meatballs containing pork fat tissue by various processing methods (A) and analytical results of the iELISA based on PF 2B8-31 mAb for the beef meatballs (B). Raw, autoclaved, steamed, roasted, and fried beef meatballs were tested. One-way ANOVA with the Tukey test ($p < 0.05$). Values represented as mean \pm SD ($n=3$). iELISA, indirect enzyme-linked immunosorbent assay; mAb, monoclonal antibody; ANOVA, analysis of variance.

showed an absorbance decrease in the lean pork fat (100%) samples roasted and fried as the heating time increased. However, the absorbance of the 30% (w/w) pork fat tissue in the roasted and fried beef meatballs did not decrease rapidly as the heating time increased, and the samples roasted for 4 and 5 min and fried for 1.5 and 2 min even showed higher absorbance values than those of the 100% pork fat samples that were roasted and fried. The ELISA can detect 0.1% (w/w) pork fat tissue in beef meatballs roasted for 2 min and fried for 30 sec, but could only detect 0.3% (w/w) pork fat tissue in beef meatballs roasted for 3 to 5 min and fried for 1 to 2 min. It was determined that 0.3% (w/w) pork fat tissue could be detected in the roasted and fried samples by the iELISA because it was not possible to recognize how long the processed meat products sold in the markets had been roasted or fried. Compared to autoclaving and steaming, roasting and frying are processing methods in which heat is directly transferred to the sample, so pure pork fat samples have better heat transfer due to the oil converted from lard by the heat. In this state, even TSSPs may be denatured or burned. On the other hand, the absorbance of 100% pork fat raw was higher than 1.5, whereas the absorbance of the 30% (w/w) or lower pork fat and in the raw beef meatballs raw decreased rapidly. Therefore, the iELISA can detect more than 3% (w/w) pork fat tissue in raw beef meatballs.

As an additional experiment, raw samples were steamed for different amounts of time (15, 30, 45, and 60 min) as a pretreatment and analyzed by ELISA. The 30% (w/w) pork fat tissue in beef meat steamed for less than 30 min showed lower absorbance than those steamed for more than 30 min (Fig. 4A). We supposed the phenomenon that thermally unstable-soluble protein present in beef meat was not sufficiently denatured in the insoluble type and existed in the soluble type even through the extraction process by the heating extraction method in boiling water for 15 min, and the extracted thermally unstable-soluble proteins interfered the interaction of TSSP and PF 2B8-31 mAb (Park et al., 2014). As shown in Fig. 4B, it was possible to measure 0.1% (w/w) of pork fat tissue in beef meatballs by ELISA in the raw samples steamed for more than 30 min. From the above results, the optimized iELISA was highly sensitive and successfully detected 0.1 pork fat tissue mixed in raw, steamed, and autoclaved beef meatballs and 0.3% (w/w) pork fat tissue mixed in roasted and fried beef meatballs.

Conclusion

TSSP in pork fat tissue was effectively extracted from heat-processed beef meatballs by hot extraction in boiling water for

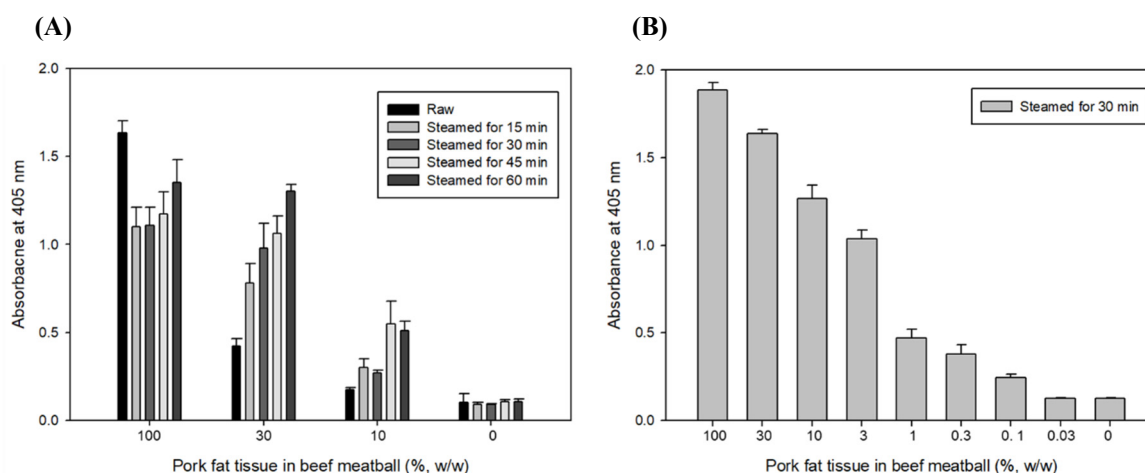


Fig. 4. Analytical results of the iELISA based on PF 2B8-31 mAb for raw beef meatballs treated with different steaming times (15–60 min) as a pre-treatment method (A) and ELISA results for raw beef meatballs steamed for 30 min (B). The negative control using without pork fat tissue in meatballs (100% beef). One-way ANOVA with the Tukey test ($p < 0.05$). Values are represented as mean \pm SD ($n=3$). iELISA, indirect enzyme-linked immunosorbent assay; mAb, monoclonal antibody; ANOVA, analysis of variance.

15 min. The iELISA based on PF 2B8-31 mAb for detecting pork fat tissue in heat-processed beef meatballs was developed and optimized with an appropriate 96-well microplate. It was found that selecting a 96-well microtiter microplate with high and uniform protein adsorption can be an important factor in improving the sensitivity of an iELISA. The iELISA can sensitively detect 0.015% (w/w) pork fat in beef meatballs and could detect 0.1% and 0.3% (w/w) pork fat mixed in raw, steamed, and autoclaved beef meatballs and roasted and fried beef meatballs, respectively. In conclusion, the iELISA based on PF 2B8-31 mAb is therefore expected to be a useful analytical tool for screening and quantification of pork fat tissue in edible meat products.

Supplementary Materials

Supplementary materials are only available online from: <https://doi.org/10.5851/kosfa.2023.e55>.

Conflicts of Interest

The authors declare no potential conflicts of interest.

Acknowledgements

This work was supported by the National Research Foundation of Korea (NRF) grant funded by the Korea government (MSIT) (NRF-2022R1F1A1076121).

Author Contributions

Conceptualization: Kim SA, Shim WB. Data curation: Kim SA, Lee S. Formal analysis: Lee JE, Kim DH, Lee S. Methodology: Kim SA, Shim WB. Validation: Kim SA, Lee JE, Yang HK. Investigation: Kim DH, Yang HK. Writing - original draft: Kim DH, Lee S, Yang HK. Writing - review & editing: Kim SA, Lee JE, Kim DH, Lee S, Yang HK, Shim WB.

Ethics Approval

All animal treatments were performed with approval from the Institutional Animal Care and Use Committee (IACUC) at the researcher's institution in Gyeongsang National University, Jinju, Korea (GNU-221103-M0153-01).

References

- Aida AA, Che Man YB, Wong CMVL, Raha AR, Son R. 2005. Analysis of raw meats and fats of pigs using polymerase chain reaction for Halal authentication. *Meat Sci* 69:47-52.
- Al-Teinaz YR. 2020. Halal ingredients in food processing and food additives. In *The halal food handbook*. Al-Teinaz YR, Spear S, Abd El-Rahim IHA (ed). John Wiley & Sons, Hoboken, NJ, USA. pp 149-167.
- Chunsheng L, Yujing L, Yan Z, Jingjing L, Junhua L, Meng W, Haiyan L, Zhencai Y. 2018. Preparation of an anti-formoterol monoclonal antibody for indirect competitive ELISA detection of formoterol in urine and pork samples. *Anal Methods* 10:548-553.

- Fowler CB, Evers DL, O'Leary TJ, Mason JT. 2011. Antigen retrieval causes protein unfolding: Evidence for a linear epitope model of recovered immunoreactivity. *J Histochem Cytochem* 59:366-381.
- Fowler CB, Waybright TJ, Veenstra TD, O'Leary TJ, Mason JT. 2012. Pressure-assisted protein extraction: A novel method for recovering proteins from archival tissue for proteomic analysis. *J Proteome Res* 11:2602-2608.
- Han F, Huang X, Aheto JH, Zhang D, Feng F. 2020. Detection of beef adulterated with pork using a low-cost electronic nose based on colorimetric sensors. *Foods* 9:193.
- Hendrickson OD, Zvereva EA, Dzantiev BB, Zherdev AV. 2021. Sensitive lateral flow immunoassay for the detection of pork additives in raw and cooked meat products. *Food Chem* 359:129927.
- Heo EJ, Ko EK, Seo KH, Kim YJ, Park HJ, Wee SH, Moon JS. 2014. Validation of PCR and ELISA test kits for identification of domestic animal species in raw meat and meat products in Korea. *J Food Hyg Saf* 29:158-163.
- Hsieh YHP, Gajewski K. 2016. Rapid detection of bovine adipose tissue using lateral flow strip assay. *Food Sci Nutr* 4:588-594.
- Hsieh YHP, Ofori JA. 2014. Detection of horse meat contamination in raw and heat-processed meat products. *J Agric Food Chem* 62:12536-12544.
- Huang SC, Shiau CY, Liu TE, Chu CL, Hwang DF. 2005. Effects of rice bran on sensory and physico-chemical properties of emulsified pork meatballs. *Meat Sci* 70:613-619.
- Jaques T. 2015. Cadbury and pig DNA: When issue management intersects with religion. *Corp Commun* 20:468-482.
- Kim JS, Kwon IJ, Kim MG, Chang JY, Shim WB. 2017. Production and preliminary characterization of monoclonal antibodies highly specific to pork fat protein. *Food Control* 79:80-86.
- Kim JS, Lee JE, Shim WB. 2016. Thermal stable soluble proteins in pork fat and meat, and their antigenicity. *J Food Hyg Saf* 31:445-450.
- Kim SA, Toughik SH, Lee JE, Shim WB. 2023. Ultrasensitive monoclonal antibodies specific to thermal stable-soluble proteins of buckwheat. *Food Chem* 423:136269.
- Li YC, Liu SY, Meng FB, Liu DY, Zhang Y, Wang W, Zhang JM. 2020. Comparative review and the recent progress in detection technologies of meat product adulteration. *Compr Rev Food Sci Food Saf* 19:2256-2296.
- Man YBC, Gan HL, Noraini I, Nazimah SAH, Tan CP. 2005. Detection of lard adulteration in RBD palm olein using an electronic nose. *Food Chem* 90:829-835.
- Mandli J, El Fatimi I, Seddaoui N, Amine A. 2018. Enzyme immunoassay (ELISA/immunosensor) for a sensitive detection of pork adulteration in meat. *Food Chem* 255:380-389.
- Nurjuliana M, Che Man YB, Mat Hashim D, Mohamed AKS. 2011. Rapid identification of pork for halal authentication using the electronic nose and gas chromatography mass spectrometer with headspace analyzer. *Meat Sci* 88:638-644.
- O'Mahony PJ. 2013. Finding horse meat in beef products: A global problem. *QJM Int J Med* 106:595-597.
- Park BS, Oh YK, Kim MJ, Shim WB. 2014. Skeletal muscle troponin I (TnI) in animal fat tissues to be used as biomarker for the identification of fat adulteration. *Korean J Food Sci Anim Resour* 34:822-828.
- Rohman A, Sismindari, Erwanto Y, Che Man YB. 2011. Analysis of pork adulteration in beef meatball using Fourier transform infrared (FTIR) spectroscopy. *Meat Sci* 88:91-95.
- Stachniuk A, Sumara A, Montowska M, Fornal E. 2021. Liquid chromatography–mass spectrometry bottom-up proteomic methods in animal species analysis of processed meat for food authentication and the detection of adulterations. *Mass Spectrom Rev* 40:3-30.

- Utuk AE, Simsek S, Koroglu E. 2012. A comparison of faecal examination, commercial ELISA kit, and indirect-ELISA methods in the diagnosis of sheep fasciolosis. *Small Rumin Res* 107:164-166.
- Zvereva EA, Kovalev LI, Ivanov AV, Kovaleva MA, Zherdev AV, Shishkin SS, Lisitsyn AB, Chernukha IM, Dzantiev BB. 2015. Enzyme immunoassay and proteomic characterization of troponin I as a marker of mammalian muscle compounds in raw meat and some meat products. *Meat Sci* 105:46-52.